

**BENCHMARKS:**  
 BM #1 - "+" on north side of manhole rim ~42' east and 28' south of the intersection of MacArthur & Bluelake St.  
 Elev. = 99.97 City Datum

BM #2 - "□" with + cut on northwest face of drop inlet on north side of MacArthur Road, 79.4' North of centerline of MacArthur Road and 152.3' E/SE of southwest corner of Reserve "C", Blue Lake 3rd Addition.  
 Elev. = 95.55 City Datum

Contact utility companies 3 weeks prior to construction to coordinate temporary relocation.  
 Shannon Brinkmeyer, AT&T (316) 268-2931

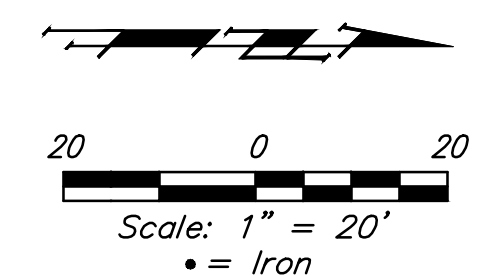
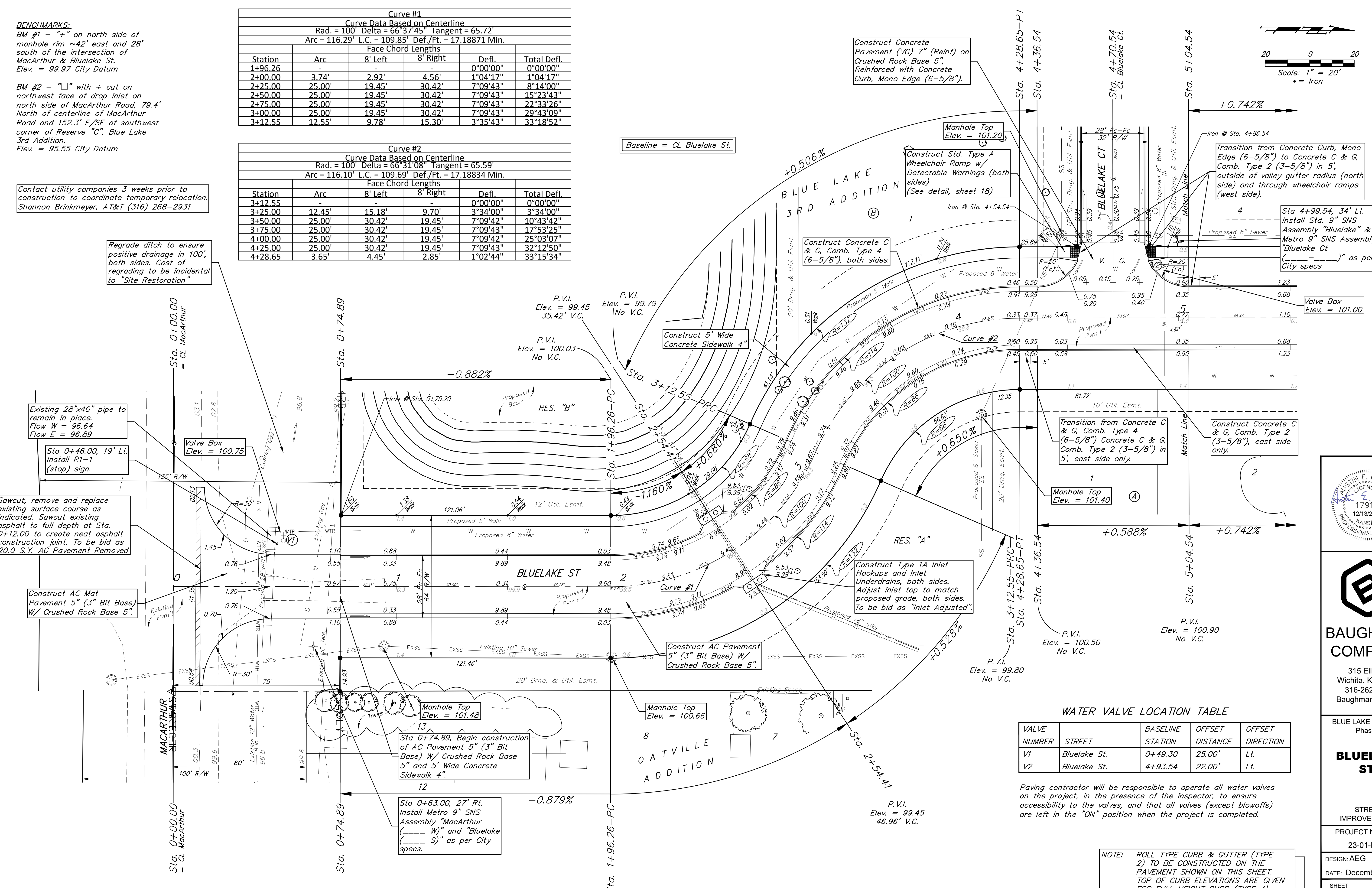
Regrade ditch to ensure positive drainage in 100', both sides. Cost of regrading to be incidental to "Site Restoration"

Curve #1  
 Curve Data Based on Centerline  
 Rad. = 100' Delta = 66°37'45" Tangent = 65.72'  
 Arc = 116.29' L.C. = 109.85' Def./Ft. = 17.18871 Min.

Station	Arc	8' Left	8' Right	Defl.	Total Defl.
1+96.26	-	-	-	0°00'00"	0°00'00"
2+00.00	3.74'	2.92'	4.56'	1°04'17"	1°04'17"
2+25.00	25.00'	19.45'	30.42'	7°09'43"	8°14'00"
2+50.00	25.00'	19.45'	30.42'	7°09'43"	15°23'43"
2+75.00	25.00'	19.45'	30.42'	7°09'43"	22°33'26"
3+00.00	25.00'	19.45'	30.42'	7°09'43"	29°43'09"
3+12.55	12.55'	9.78'	15.30'	3°35'43"	33°18'52"

Curve #2  
 Curve Data Based on Centerline  
 Rad. = 100' Delta = 66°31'08" Tangent = 65.59'  
 Arc = 116.10' L.C. = 109.69' Def./Ft. = 17.18834 Min.

Station	Arc	8' Left	8' Right	Defl.	Total Defl.
3+12.55	-	-	-	0°00'00"	0°00'00"
3+25.00	12.45'	15.18'	9.70'	3°34'00"	3°34'00"
3+50.00	25.00'	30.42'	19.45'	7°09'42"	10°43'42"
3+75.00	25.00'	30.42'	19.45'	7°09'43"	17°53'25"
4+00.00	25.00'	30.42'	19.45'	7°09'42"	25°03'07"
4+25.00	25.00'	30.42'	19.45'	7°09'43"	32°12'50"
4+28.65	3.65'	4.45'	2.85'	1°02'44"	33°15'34"



**WATER VALVE LOCATION TABLE**

VALVE NUMBER	STREET	BASELINE STATION	OFFSET DISTANCE	OFFSET DIRECTION
V1	Bluelake St.	0+49.30	25.00'	Lt.
V2	Bluelake St.	4+93.54	22.00'	Lt.

Paving contractor will be responsible to operate all water valves on the project, in the presence of the inspector, to ensure accessibility to the valves, and that all valves (except blowoffs) are left in the "ON" position when the project is completed.

NOTE: ROLL TYPE CURB & GUTTER (TYPE 2) TO BE CONSTRUCTED ON THE PAVEMENT SHOWN ON THIS SHEET. TOP OF CURB ELEVATIONS ARE GIVEN FOR FULL HEIGHT CURB (TYPE 4).



**BAUGHMAN COMPANY**  
 315 Ellis St.  
 Wichita, KS 67211  
 316-262-7271  
 BaughmanCo.com

BLUE LAKE 3RD ADD.  
 Phase 1

**BLUETLAKE ST.**

STREET IMPROVEMENTS

PROJECT NUMBER:  
 23-01-E416

DESIGN: AEG DRAWN: TMS  
 DATE: December 12, 2023

SHEET **2** OF **39**

File: E:\Projects\Blue Lake 3rd Addition\_22-02-P755\Engineering\Phase 1\STR 23-01-E416\Street.dwg