

BENCHMARKS:
 BM #1 - "+" on north side of manhole rim ~42' east and 28' south of the intersection of MacArthur & Bluelake St.
 Elev. = 99.97 City Datum

BM #2 - "□" with + cut on northwest face of drop inlet on north side of MacArthur Road, 79.4' North of centerline of MacArthur Road and 152.3' E/SE of southwest corner of Reserve "C", Blue Lake 3rd Addition.
 Elev. = 95.55 City Datum

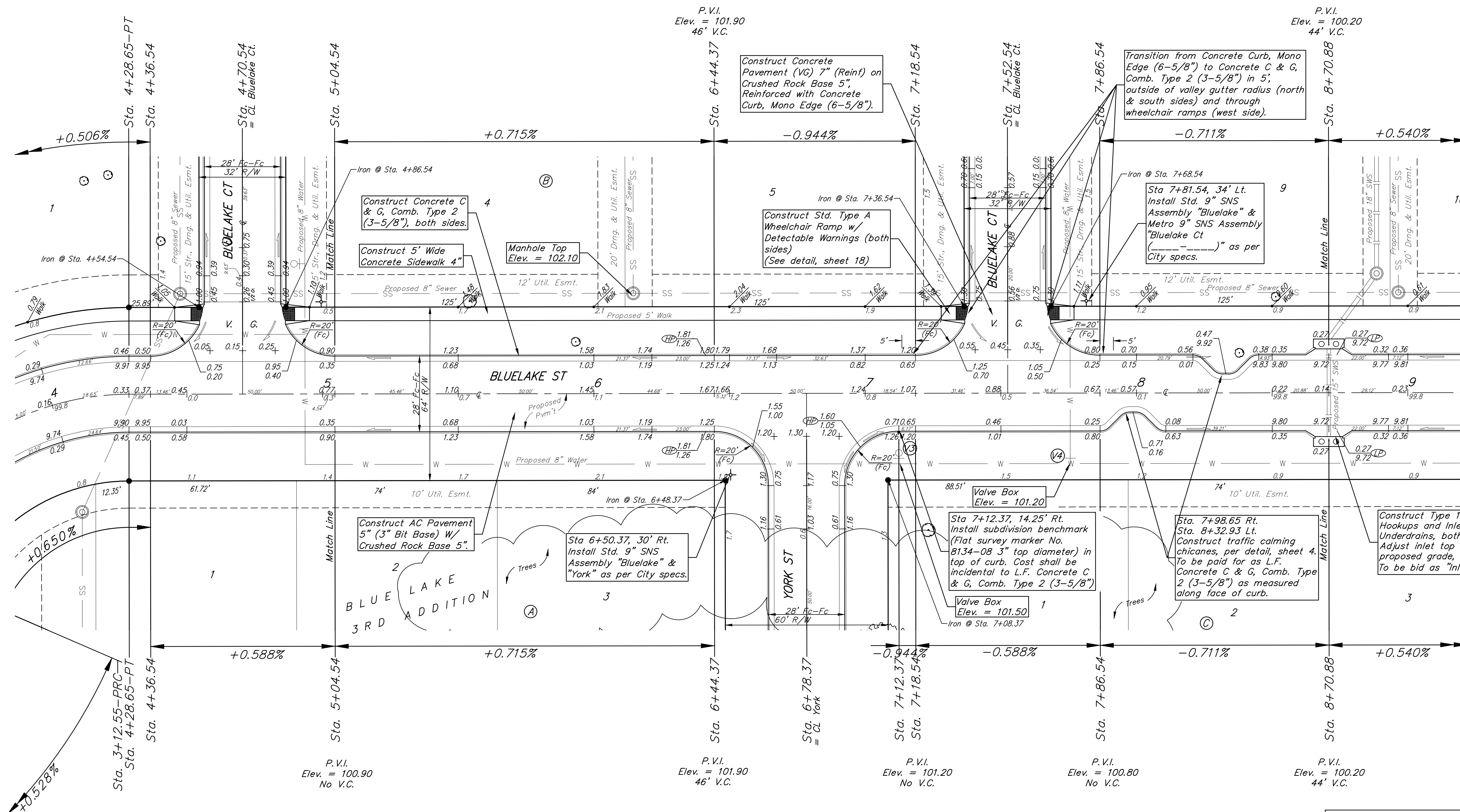
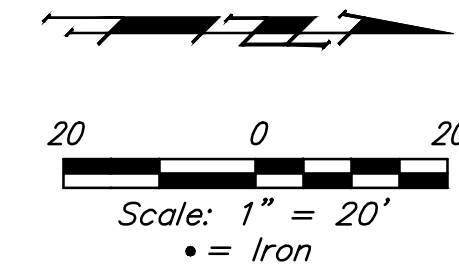
WATER VALVE LOCATION TABLE

| VALVE NUMBER | STREET | BASELINE STATION | OFFSET DISTANCE | OFFSET DIRECTION |
|--------------|--------------|------------------|-----------------|------------------|
| V3 | Bluelake St. | 7+12.37 | 26.00' | Rt. |
| V4 | Bluelake St. | 7+75.54 | 26.00' | Rt. |

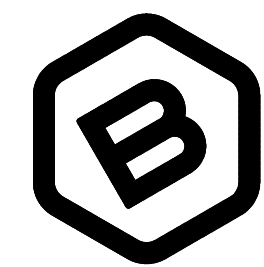
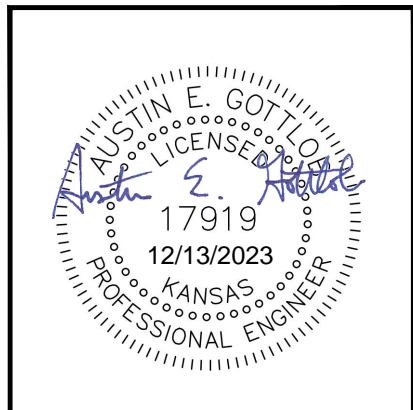
Baseline = CL Bluelake St.

Paving contractor will be responsible to operate all water valves on the project, in the presence of the inspector, to ensure accessibility to the valves, and that all valves (except blowoffs) are left in the "ON" position when the project is completed.

| Subdivision Bench Marks | | |
|------------------------------|--|-----------|
| Street & Station | Location Description | Elevation |
| Bluelake 7+12.37, 14.25' Rt. | Adjacent to Fire Hydrant at N. end of NE curb return of Bluelake & York. | |



NOTE: ROLL TYPE CURB & GUTTER (TYPE 2) TO BE CONSTRUCTED ON THE PAVEMENT SHOWN ON THIS SHEET. TOP OF CURB ELEVATIONS ARE GIVEN FOR FULL HEIGHT CURB (TYPE 4).



BAUGHMAN COMPANY
 315 Ellis St.
 Wichita, KS 67211
 316-262-7271
 BaughmanCo.com

BLUE LAKE 3RD ADD.
 Phase 1

BLUE LAKE ST.

STREET IMPROVEMENTS

PROJECT NUMBER:
 23-01-E416

DESIGN: AEG DRAWN: TMS

DATE: October 9, 2023

SHEET **3** OF **39**

File: E:\Projects\Blue Lake 3rd Addition_22-02-P755\Engineering\Phase 1\STR 23-01-E416\Street.dwg