

BENCHMARKS:

BM #1 - "+" on north side of manhole rim ~42' east and 28' south of the intersection of MacArthur & Bluelake St. Elev. = 99.97 City Datum

BM #2 - "□" with + cut on northwest face of drop inlet on north side of MacArthur Road, 79.4' North of centerline of MacArthur Road and 152.3' E/SE of southwest corner of Reserve "C", Blue Lake 3rd Addition. Elev. = 95.55 City Datum

WATER VALVE LOCATION TABLE

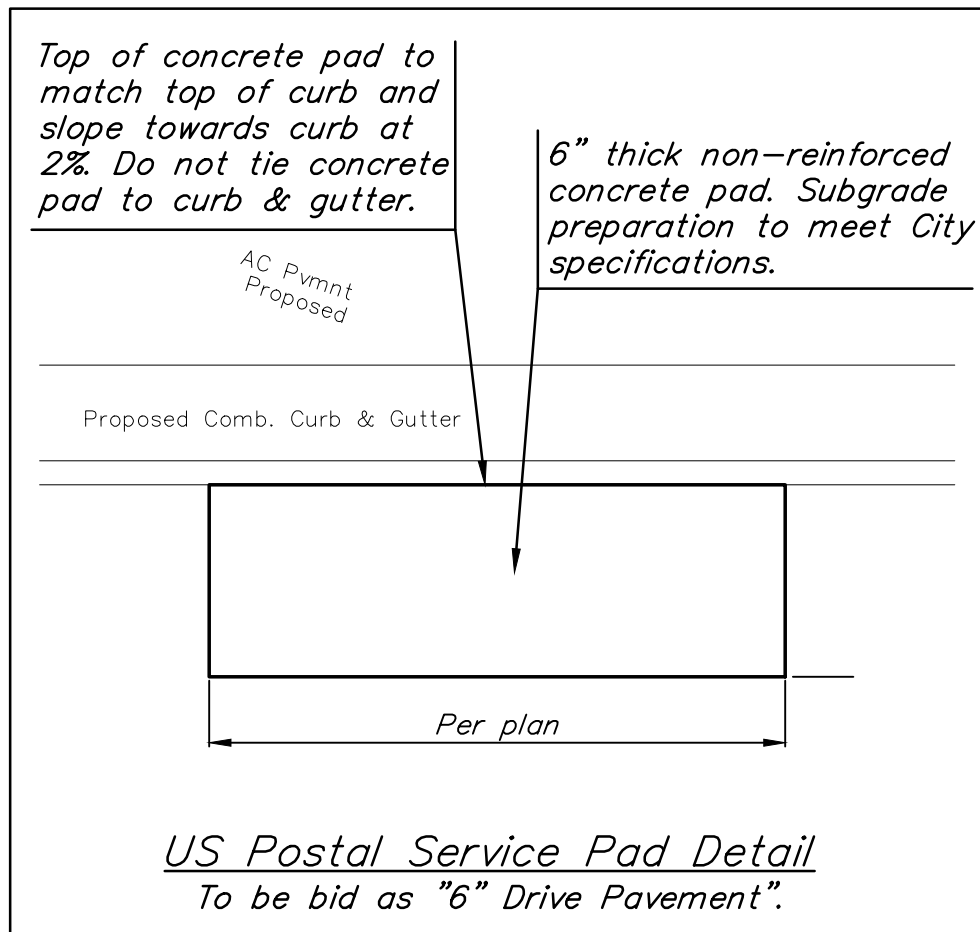
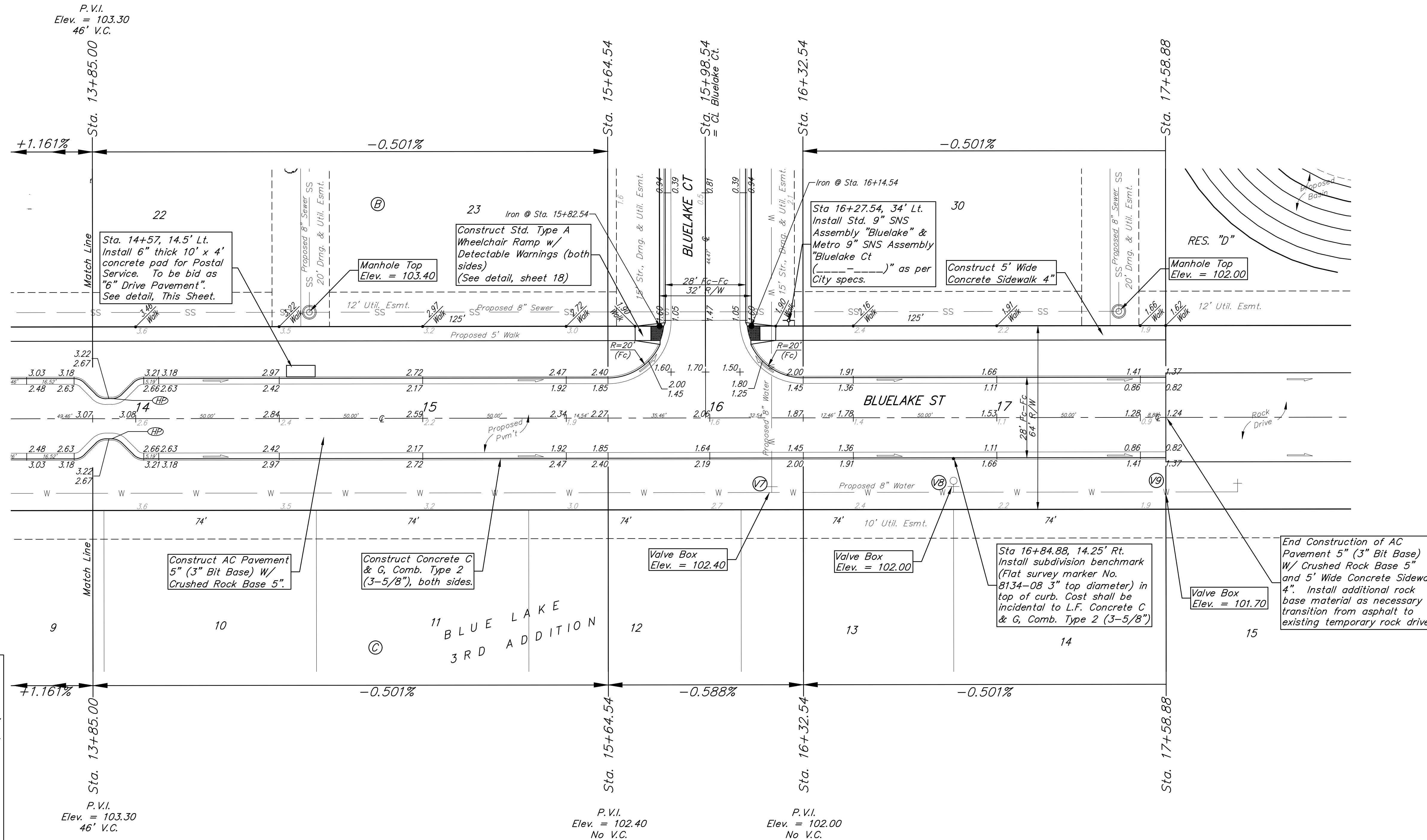
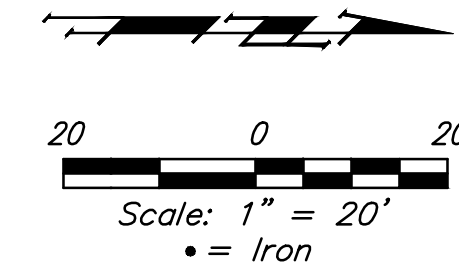
VALVE NUMBER	STREET	BASELINE STATION	OFFSET DISTANCE	OFFSET DIRECTION
V7	Bluelake St.	16+21.54	26.00'	Rt.
V8	Bluelake St.	16+84.88	26.00'	Rt.
V9	Bluelake St.	17+58.88	26.00'	Rt.

Baseline = CL Bluelake St.

Paving contractor will be responsible to operate all water valves on the project, in the presence of the inspector, to ensure accessibility to the valves, and that all valves (except blowoffs) are left in the "ON" position when the project is completed.

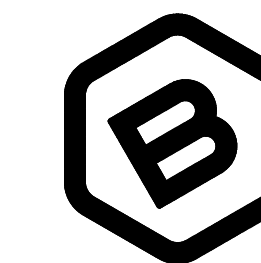
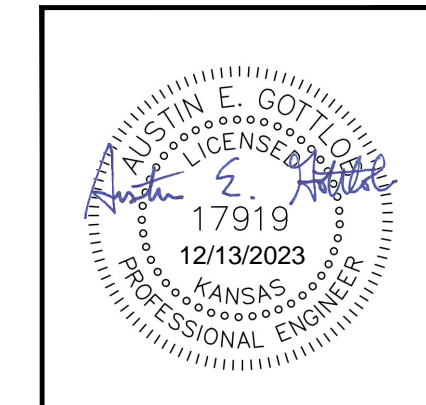
Subdivision Bench Marks

Street & Station	Location Description	Elevation
Bluelake St. 16+84.88, 14.25' Rt.	Adjacent to Fire Hydrant near common front lot corner of Lots 13 and 14, Block C, Bluelake 3rd Addition.	



US Postal Service Pad Detail
To be bid as "6" Drive Pavement".

NOTE: ROLL TYPE CURB & GUTTER (TYPE 2) TO BE CONSTRUCTED ON THE PAVEMENT SHOWN ON THIS SHEET. TOP OF CURB ELEVATIONS ARE GIVEN FOR FULL HEIGHT CURB (TYPE 4).



BAUGHMAN COMPANY

315 Ellis St.
Wichita, KS 67211
316-262-7271
BaughmanCo.com

BLUE LAKE 3RD ADD.
Phase 1

BLUE LAKE ST.

STREET IMPROVEMENTS

PROJECT NUMBER:
23-01-E416

DESIGN: AEG DRAWN: TMS

DATE: November 17, 2023

SHEET **5** OF **39**

File: E:\Projects\Blue Lake 3rd Addition_22-02-P755\Engineering\Phase 1\STR 23-01-E416\Street.dwg