

BENCHMARKS:

BM #1 - "+" on north side of manhole rim ~42' east and 28' south of the intersection of MacArthur & Bluelake St.
Elev. = 99.97 City Datum

BM #2 - "□" with + cut on northwest face of drop inlet on north side of MacArthur Road, 79.4' North of centerline of MacArthur Road and 152.3' E/SE of southwest corner of Reserve "C", Blue Lake 3rd Addition.
Elev. = 95.55 City Datum

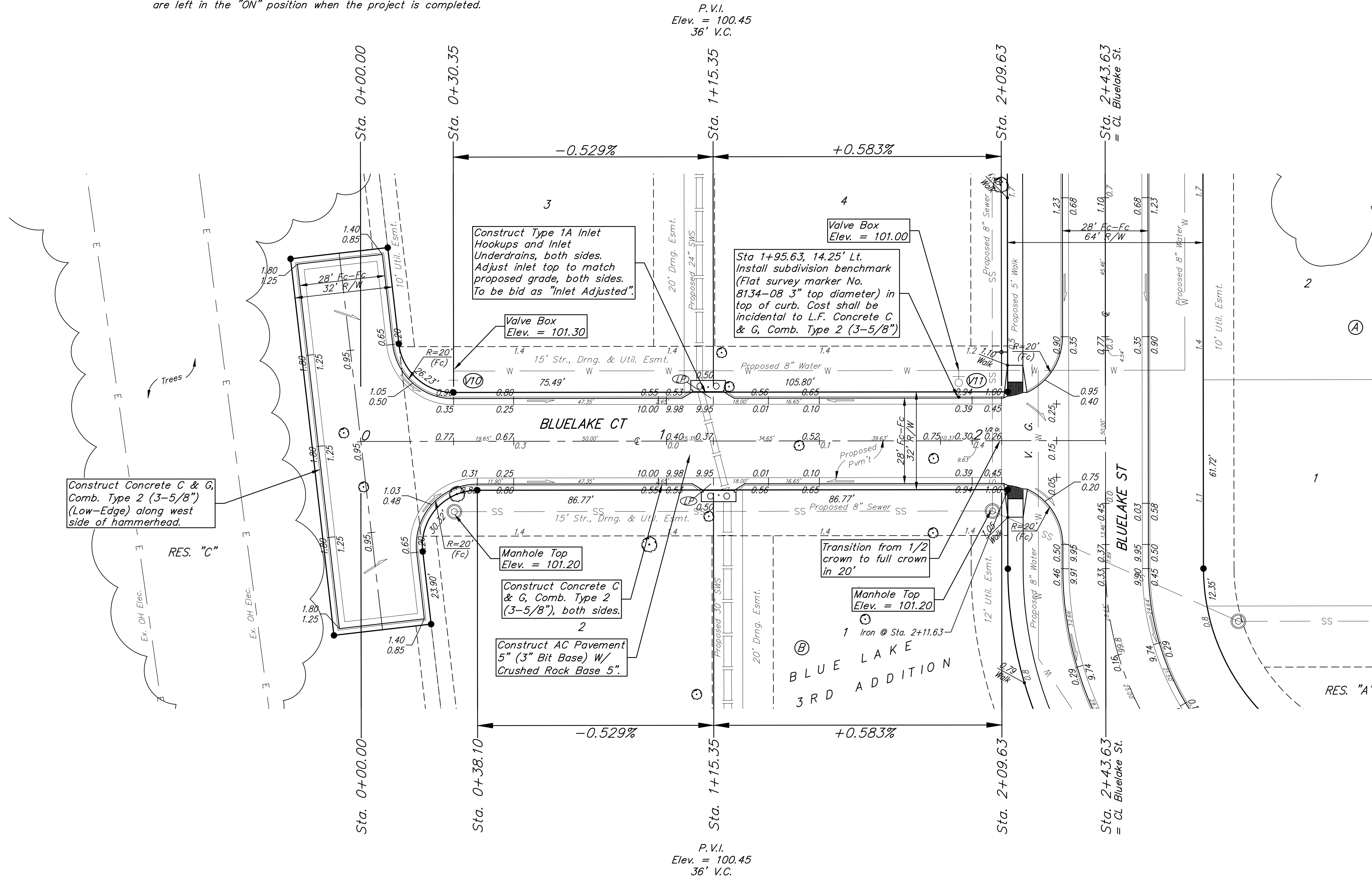
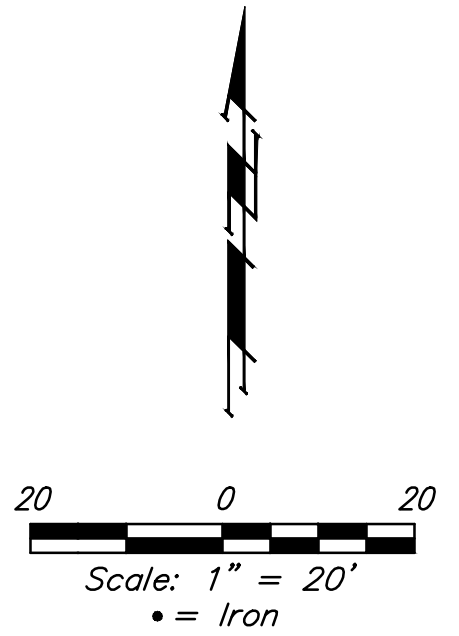
WATER VALVE LOCATION TABLE

VALVE NUMBER	STREET	BASELINE STATION	OFFSET DISTANCE	OFFSET DIRECTION
V10	Bluelake Ct.	0+30.35	23.00'	Lt.
V11	Bluelake Ct.	1+95.63	23.00'	Lt.

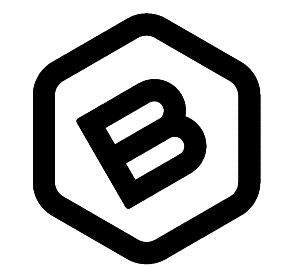
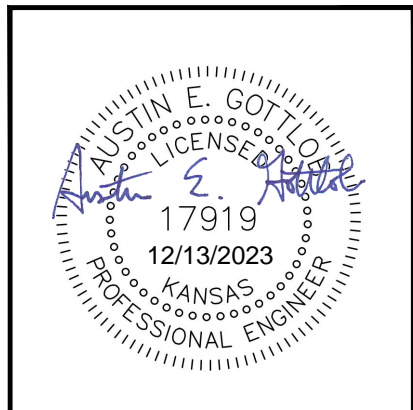
Baseline = CL Bluelake Ct.

Subdivision Bench Marks		
Street & Station	Location Description	Elevation
Bluelake Ct. 1+95.63, 14.25' Lt.	Adjacent to Fire Hydrant 14' west of west end of NW curb return of Bluelake & Bluelake Ct. (Lots 1-4, Block B).	

Paving contractor will be responsible to operate all water valves on the project, in the presence of the inspector, to ensure accessibility to the valves, and that all valves (except blowoffs) are left in the "ON" position when the project is completed.



NOTE: ROLL TYPE CURB & GUTTER (TYPE 2) TO BE CONSTRUCTED ON THE PAVEMENT SHOWN ON THIS SHEET. TOP OF CURB ELEVATIONS ARE GIVEN FOR FULL HEIGHT CURB (TYPE 4).



BAUGHMAN COMPANY
315 Ellis St.
Wichita, KS 67211
316-262-7271
BaughmanCo.com

BLUE LAKE 3RD ADD.
Phase 1
**BLUELAKE CT.
(LOTS 1-4)**

STREET IMPROVEMENTS
PROJECT NUMBER:
23-01-E416
DESIGN: AEG DRAWN: TMS
DATE: October 9, 2023
SHEET **6** OF **39**

File: E:\Projects\Blue Lake 3rd Addition_22-02-P755\Engineering\Phase 1\STR 23-01-E416\Street.dwg