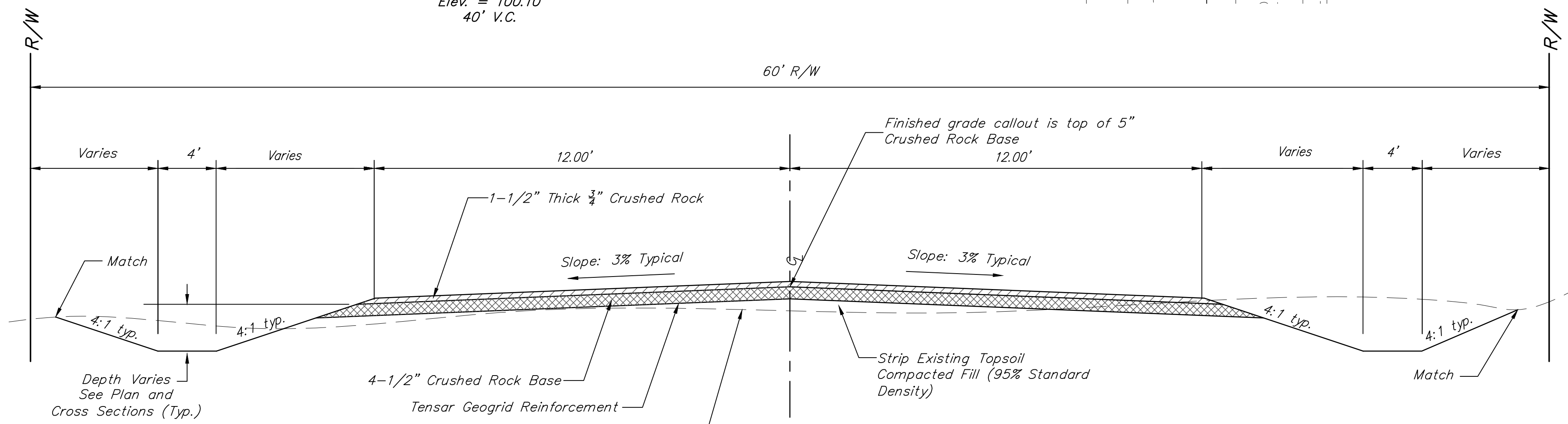
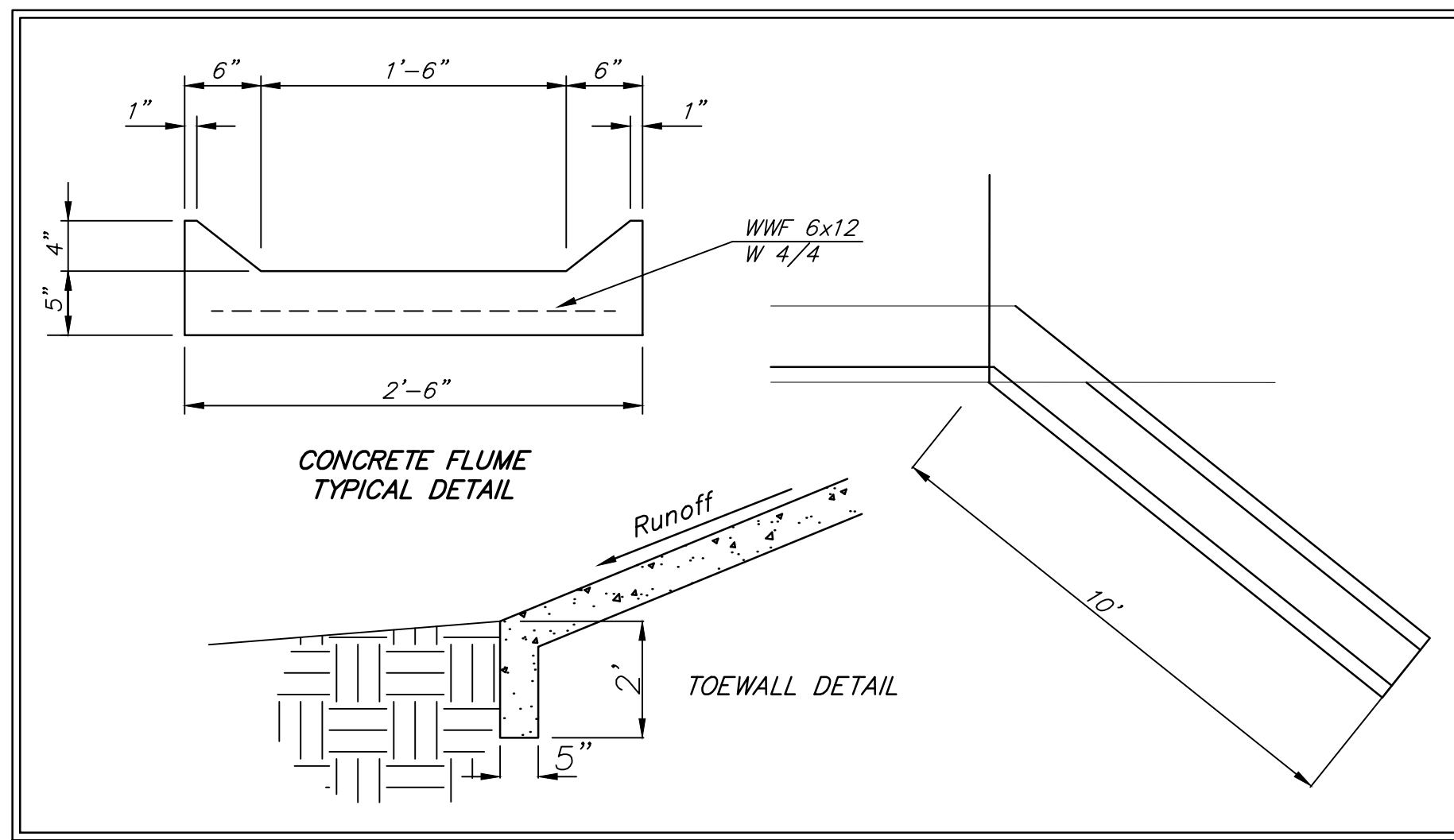
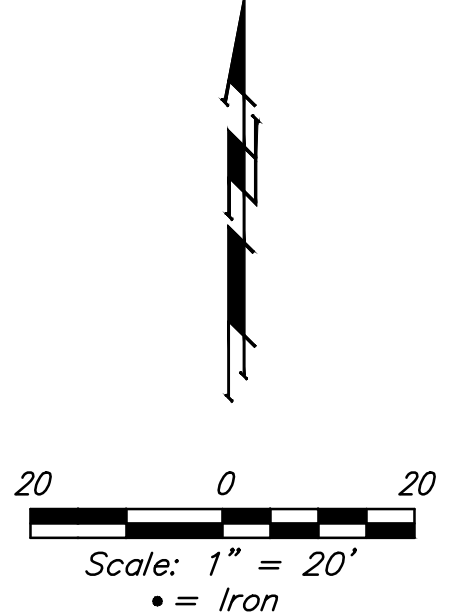
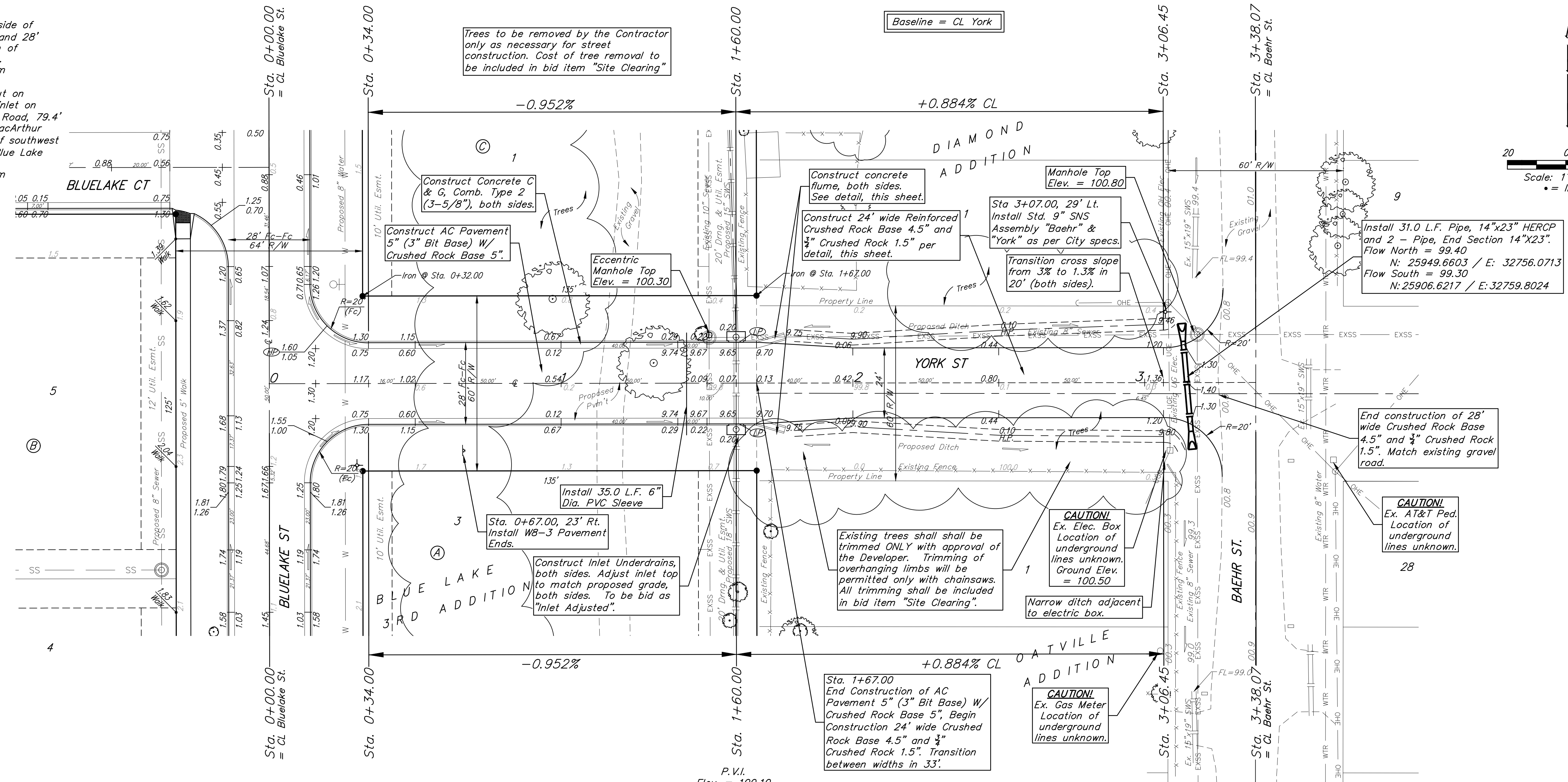


**BENCHMARKS:**  
 BM #1 - "+" on north side of manhole rim ~42' east and 28' south of the intersection of MacArthur & Bluelake St. Elev. = 99.97 City Datum

BM #2 - "□" with + cut on northwest face of drop inlet on north side of MacArthur Road, 79.4' North of centerline of MacArthur Road and 152.3' E/SE of southwest corner of Reserve "C", Blue Lake 3rd Addition. Elev. = 95.55 City Datum

P.V.I.  
 Elev. = 100.10  
 40' V.C.



TYPICAL SECTION (EAST HALF OF YORK)

No Scale

NOTE: ROLL TYPE CURB & GUTTER (TYPE 2) TO BE CONSTRUCTED ON THE PAVEMENT SHOWN ON THIS SHEET. TOP OF CURB ELEVATIONS ARE GIVEN FOR FULL HEIGHT CURB (TYPE 4).

**PRELIMINARY PLAN. NOT FOR CONSTRUCTION.**  
 This document is preliminary in nature and is not a final, signed and sealed document.

**BAUGHMAN COMPANY**  
 315 Ellis St.  
 Wichita, KS 67211  
 316-262-7271  
 BaughmanCo.com

BLUE LAKE 3RD ADD.  
 Phase 1

**YORK**

STREET IMPROVEMENTS

PROJECT NUMBER:  
 23-01-E416

DESIGN: AEG DRAWN: TMS  
 DATE: December 14, 2023

SHEET **7** OF **39**

File: E:\Projects\Blue Lake 3rd Addition\_22-02-P755\Engineering\Phase 1\STR 23-01-E416\Street.dwg