

**BENCHMARKS:**  
 BM #1 - "+" on north side of manhole rim ~42' east and 28' south of the intersection of MacArthur & Bluelake St.  
 Elev. = 99.97 City Datum

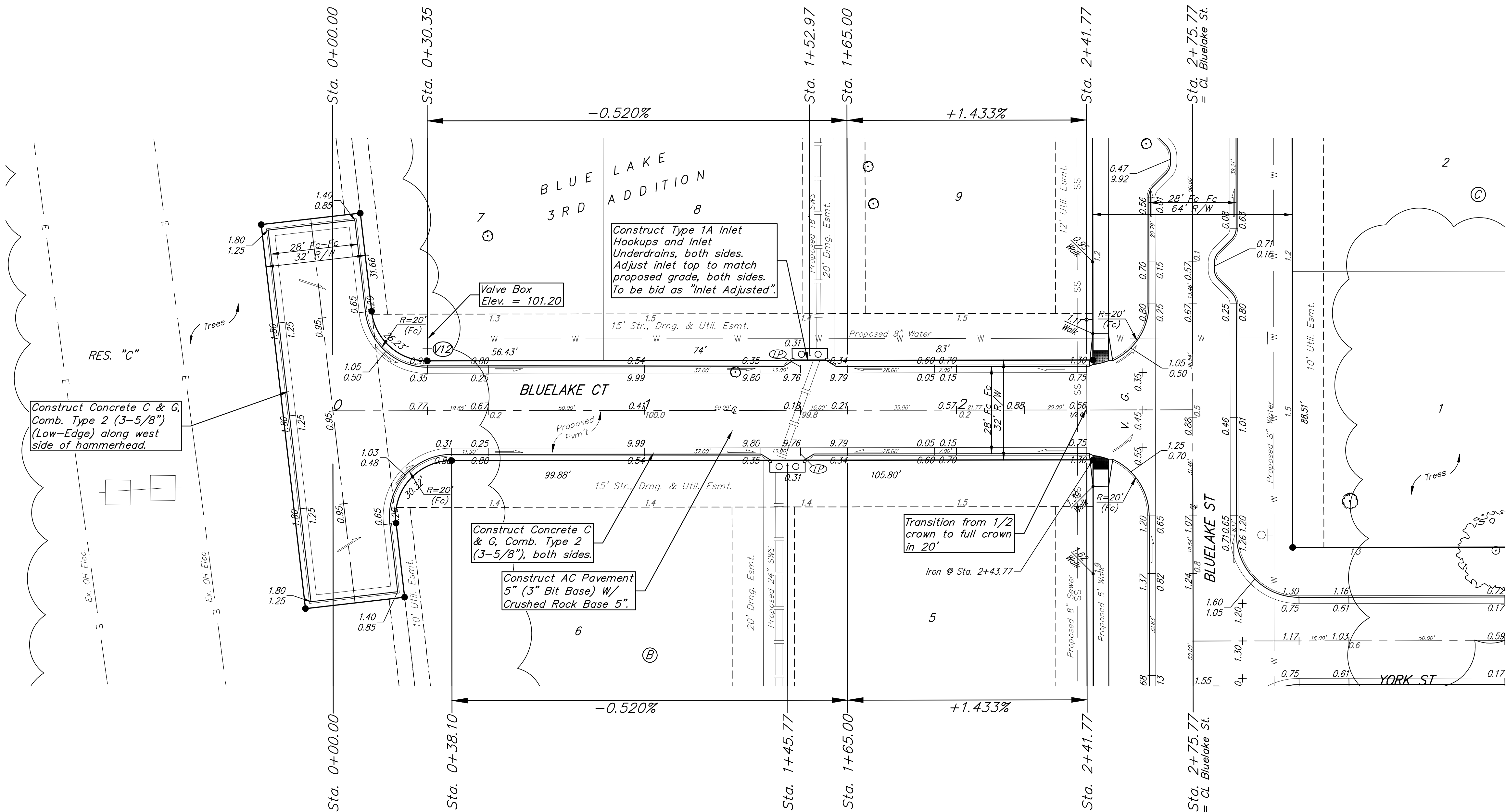
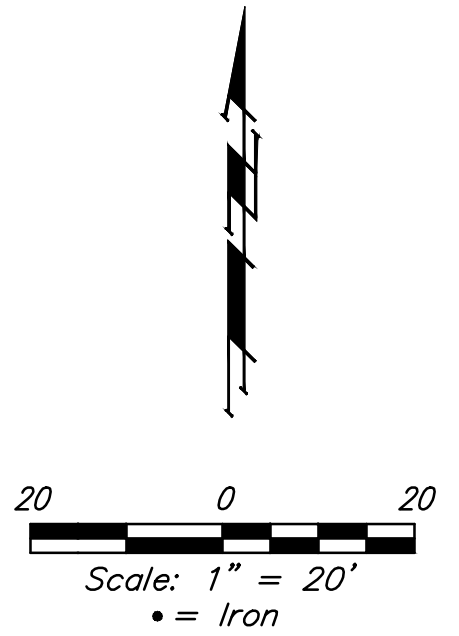
BM #2 - "□" with + cut on northwest face of drop inlet on north side of MacArthur Road, 79.4' North of centerline of MacArthur Road and 152.3' E/SE of southwest corner of Reserve "C", Blue Lake 3rd Addition.  
 Elev. = 95.55 City Datum

**WATER VALVE LOCATION TABLE**

VALVE NUMBER	STREET	BASILINE STATION	OFFSET DISTANCE	OFFSET DIRECTION
V12	Bluelake Ct.	0+30.35	23.00'	Lt.

Baseline = CL Bluelake Ct.

Paving contractor will be responsible to operate all water valves on the project, in the presence of the inspector, to ensure accessibility to the valves, and that all valves (except blowoffs) are left in the "ON" position when the project is completed.



Construct Concrete C & G, Comb. Type 2 (3-5/8") (Low-Edge) along west side of hammerhead.

Construct Concrete C & G, Comb. Type 2 (3-5/8"), both sides.  
 Construct AC Pavement 5" (3" Bit Base) W/ Crushed Rock Base 5".

Construct Type 1A Inlet Hookups and Inlet Underdrains, both sides. Adjust inlet top to match proposed grade, both sides. To be bid as "Inlet Adjusted".

Transition from 1/2 crown to full crown in 20'

NOTE: ROLL TYPE CURB & GUTTER (TYPE 2) TO BE CONSTRUCTED ON THE PAVEMENT SHOWN ON THIS SHEET. TOP OF CURB ELEVATIONS ARE GIVEN FOR FULL HEIGHT CURB (TYPE 4).

**BAUGHMAN COMPANY**  
 315 Ellis St.  
 Wichita, KS 67211  
 316-262-7271  
 BaughmanCo.com

---

BLUE LAKE 3RD ADD.  
 Phase 1  
**BLUELAKE CT. (LOTS 5-9)**  
 STREET IMPROVEMENTS  
 PROJECT NUMBER: 23-01-E416  
 DESIGN: AEG DRAWN: TMS  
 DATE: October 9, 2023  
 SHEET **8** OF **39**

File: E:\Projects\Blue Lake 3rd Addition\_22-02-P755\Engineering\Phase 1\STR 23-01-E416\Street.dwg