

# FINAL PLAT

## HAWTHORNE THIRD ADDITION

AN ADDITION TO WICHITA, SEDGWICK COUNTY, KANSAS

### BENCH MARKS

BM 431 "T" post 41 1/2" x 5 1/2" W. of SE Cor. Williamsgate  
North of Lot 22, Blk. 1,  
Elev. = 1749.41 City datum

BM 436 "T" post 5 1/4" x 5 1/4" W. of NW Cor.  
Rosemont and Camden Chase - "H" Rest. "C",  
Elev. = 1366.63 NGVD  
181.23 City datum

NE Cor. SW 1/4, Sec. 2,  
T27S, R2E, 6th P.M.,  
Find 3/4" Bar w/ T.I.S.  
Brows Id. cap in Center

NE Cor. SE 1/4, Sec. 2,  
T27S, R2E, 6th P.M.,  
Find 3/4" Rebar w/ cap in  
Thimble

NW Cor. King North  
Addition  
Find 1" Rebar w/  
Benchmark Id cap

SW Cor. Lot 1, Blk. 5,  
King North Addition  
Find 1" Rebar w/  
Benchmark Id cap

NW Cor. Lot 2, Blk. A,  
King North Addition  
Find 1" Rebar w/  
Benchmark Id cap

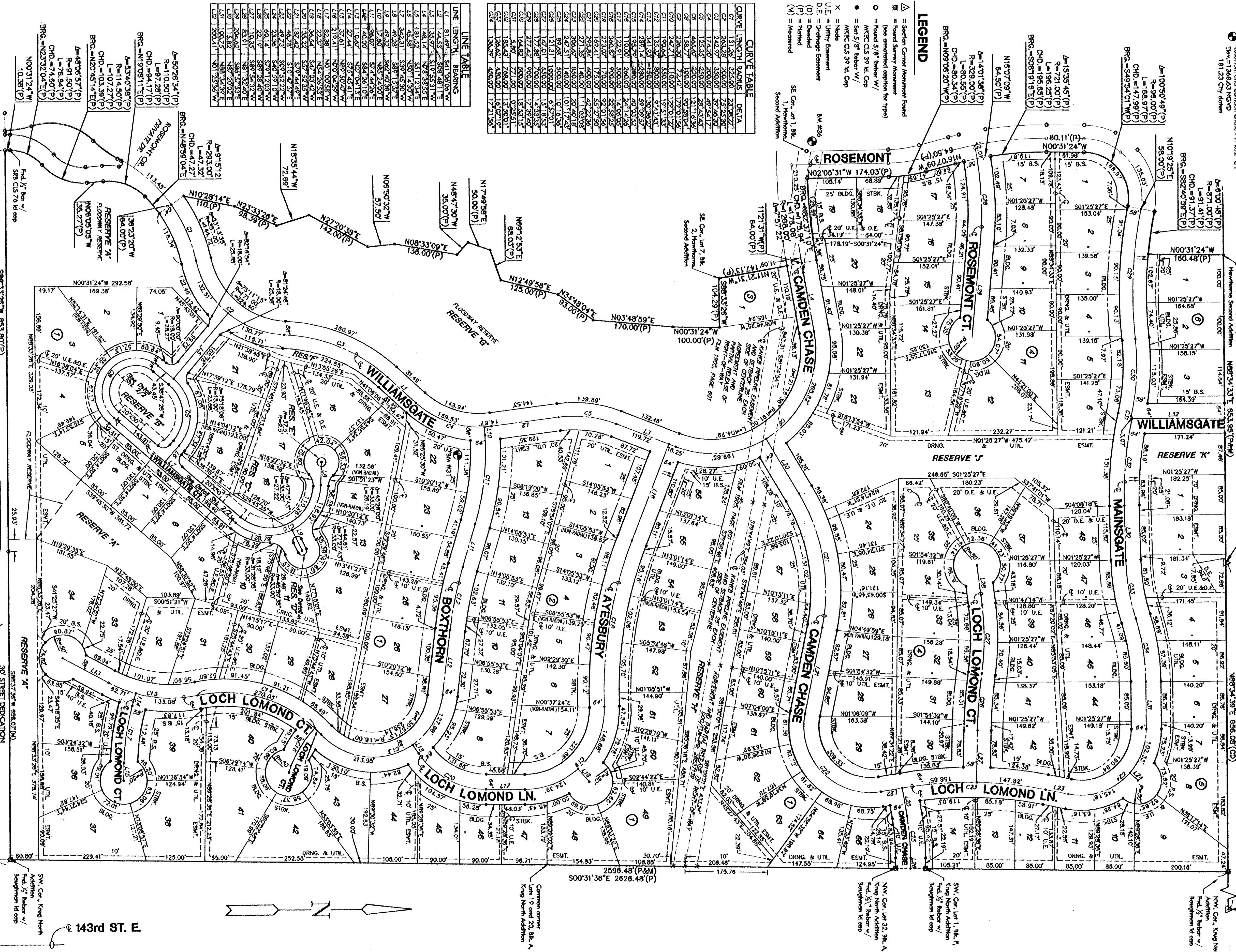
- ### LEGEND
- △ = Section Corner Monument Found
  - ⊙ = Found Survey Monument (See annotated caption for type)
  - = Found 5/8" Rebar w/ AHEC CLS 39 W. Cap
  - = Set 5/8" Rebar w/ AHEC CLS 39 W. Cap
  - X = Hole
  - U.E. = Utility Easement
  - D.E. = Driveway Easement
  - (D) = Ditched
  - (P) = Paved
  - (M) = Manned

### CURVE TABLE

LINE	LENGTH	RADIUS	DELTA
C1	13.10	325.00	24.9822°
C2	14.43	325.00	24.9822°
C3	14.43	325.00	24.9822°
C4	17.42	500.00	49.5417°
C5	13.53	500.00	28.4842°
C6	14.63	500.00	28.4842°
C7	14.63	500.00	28.4842°
C8	23.82	500.00	56.9684°
C9	23.82	500.00	56.9684°
C10	23.82	500.00	56.9684°
C11	19.04	500.00	45.1747°
C12	19.04	500.00	45.1747°
C13	19.04	500.00	45.1747°
C14	19.04	500.00	45.1747°
C15	19.04	500.00	45.1747°
C16	19.04	500.00	45.1747°
C17	19.04	500.00	45.1747°
C18	19.04	500.00	45.1747°
C19	19.04	500.00	45.1747°
C20	19.04	500.00	45.1747°
C21	19.04	500.00	45.1747°
C22	19.04	500.00	45.1747°
C23	19.04	500.00	45.1747°
C24	19.04	500.00	45.1747°
C25	19.04	500.00	45.1747°
C26	19.04	500.00	45.1747°
C27	19.04	500.00	45.1747°
C28	19.04	500.00	45.1747°
C29	19.04	500.00	45.1747°
C30	19.04	500.00	45.1747°
C31	19.04	500.00	45.1747°
C32	19.04	500.00	45.1747°
C33	19.04	500.00	45.1747°
C34	19.04	500.00	45.1747°

### LINE TABLE

LINE	LENGTH	BEARING
L1	110.50	S 90° 28' 34" W
L2	110.50	S 90° 28' 34" W
L3	110.50	S 90° 28' 34" W
L4	110.50	S 90° 28' 34" W
L5	110.50	S 90° 28' 34" W
L6	110.50	S 90° 28' 34" W
L7	110.50	S 90° 28' 34" W
L8	110.50	S 90° 28' 34" W
L9	110.50	S 90° 28' 34" W
L10	110.50	S 90° 28' 34" W
L11	110.50	S 90° 28' 34" W
L12	110.50	S 90° 28' 34" W
L13	110.50	S 90° 28' 34" W
L14	110.50	S 90° 28' 34" W
L15	110.50	S 90° 28' 34" W
L16	110.50	S 90° 28' 34" W
L17	110.50	S 90° 28' 34" W
L18	110.50	S 90° 28' 34" W
L19	110.50	S 90° 28' 34" W
L20	110.50	S 90° 28' 34" W
L21	110.50	S 90° 28' 34" W
L22	110.50	S 90° 28' 34" W
L23	110.50	S 90° 28' 34" W
L24	110.50	S 90° 28' 34" W
L25	110.50	S 90° 28' 34" W
L26	110.50	S 90° 28' 34" W
L27	110.50	S 90° 28' 34" W
L28	110.50	S 90° 28' 34" W
L29	110.50	S 90° 28' 34" W
L30	110.50	S 90° 28' 34" W
L31	110.50	S 90° 28' 34" W
L32	110.50	S 90° 28' 34" W
L33	110.50	S 90° 28' 34" W
L34	110.50	S 90° 28' 34" W
L35	110.50	S 90° 28' 34" W
L36	110.50	S 90° 28' 34" W
L37	110.50	S 90° 28' 34" W
L38	110.50	S 90° 28' 34" W
L39	110.50	S 90° 28' 34" W
L40	110.50	S 90° 28' 34" W
L41	110.50	S 90° 28' 34" W
L42	110.50	S 90° 28' 34" W
L43	110.50	S 90° 28' 34" W
L44	110.50	S 90° 28' 34" W
L45	110.50	S 90° 28' 34" W
L46	110.50	S 90° 28' 34" W
L47	110.50	S 90° 28' 34" W
L48	110.50	S 90° 28' 34" W
L49	110.50	S 90° 28' 34" W
L50	110.50	S 90° 28' 34" W
L51	110.50	S 90° 28' 34" W
L52	110.50	S 90° 28' 34" W
L53	110.50	S 90° 28' 34" W
L54	110.50	S 90° 28' 34" W
L55	110.50	S 90° 28' 34" W
L56	110.50	S 90° 28' 34" W
L57	110.50	S 90° 28' 34" W
L58	110.50	S 90° 28' 34" W
L59	110.50	S 90° 28' 34" W
L60	110.50	S 90° 28' 34" W
L61	110.50	S 90° 28' 34" W
L62	110.50	S 90° 28' 34" W
L63	110.50	S 90° 28' 34" W
L64	110.50	S 90° 28' 34" W
L65	110.50	S 90° 28' 34" W
L66	110.50	S 90° 28' 34" W
L67	110.50	S 90° 28' 34" W
L68	110.50	S 90° 28' 34" W
L69	110.50	S 90° 28' 34" W
L70	110.50	S 90° 28' 34" W
L71	110.50	S 90° 28' 34" W
L72	110.50	S 90° 28' 34" W
L73	110.50	S 90° 28' 34" W
L74	110.50	S 90° 28' 34" W
L75	110.50	S 90° 28' 34" W
L76	110.50	S 90° 28' 34" W
L77	110.50	S 90° 28' 34" W
L78	110.50	S 90° 28' 34" W
L79	110.50	S 90° 28' 34" W
L80	110.50	S 90° 28' 34" W
L81	110.50	S 90° 28' 34" W
L82	110.50	S 90° 28' 34" W
L83	110.50	S 90° 28' 34" W
L84	110.50	S 90° 28' 34" W
L85	110.50	S 90° 28' 34" W
L86	110.50	S 90° 28' 34" W
L87	110.50	S 90° 28' 34" W
L88	110.50	S 90° 28' 34" W
L89	110.50	S 90° 28' 34" W
L90	110.50	S 90° 28' 34" W
L91	110.50	S 90° 28' 34" W
L92	110.50	S 90° 28' 34" W
L93	110.50	S 90° 28' 34" W
L94	110.50	S 90° 28' 34" W
L95	110.50	S 90° 28' 34" W
L96	110.50	S 90° 28' 34" W
L97	110.50	S 90° 28' 34" W
L98	110.50	S 90° 28' 34" W
L99	110.50	S 90° 28' 34" W
L100	110.50	S 90° 28' 34" W



**MKEC**  
ENGINEERING  
CONSULTANTS  
4111 N. 78th St  
Wichita, KS 67338  
316.833.9999

18-04-04-04

PC 166-6A

1/2

SCALE 1" = 100'

0 100 200

DATE RECORDED: 9/30/2004 9:02:10 AM

RECORDING FEE: \$410.00

RECORDING OFFICE: SEDGWICK COUNTY, KANSAS