

BENCHMARKS

BM #1: Brass Plate on North Hub Guard of R.C.B.C. 50' East of NW Corner NE 1/2, Sec. 22, Twp. 26-S, R-1-E. Elev. = 1371.83 (NGVD29)

BM #2: "X" cut on East Hub Guard of R.C.B.C. 110' S. of the SE Cor. SE 1/4, Sec. 22, Twp. 26-S, R-1-E. Elev. = 1359.54 (NGVD29)

Sta 0+00, Begin Line 1 Core into existing manhole and extend 10" pipe north west. Seal & grout around pipe and reshape invert. Cost to be incidental to "Site Clearing & Restoration" bid item.

Sta 2+04.8, Line 1 Construct Std. Manhole (5' Dia) 1 - 8" Stub (SW) Top Elev. = 1350.40

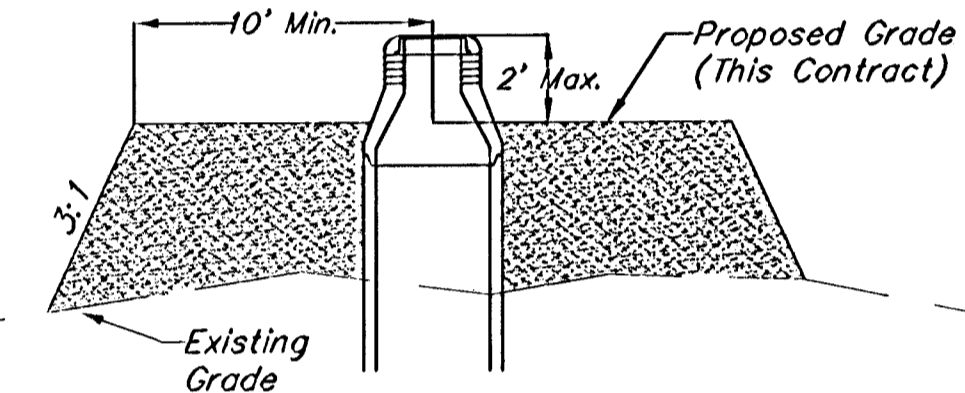
Sta 2+74.9, Line 1 Construct Std. Manhole (5' Dia) 1 - 4" Stub (NE) Top Elev. = 1350.90

Sta 5+06.6, Line 1 Construct Std. Manhole (5' Dia) 1 - 4" Stub (NE) Top Elev. = 1352.30

Sta 6+73.2, Line 1 Construct Std. Manhole (5' Dia) Top Elev. = 1352.60 Match Point

Scale: 1" = 40' Horizontal
1" = 5' Vertical
• = Iron

Contractor to fill within 2' of Manhole Top and for 10' around Manhole and sewer line, grading back to existing ground at a 3:1 slope. Cost to be included in "Site Clearing & Restoration" bid item.



Fill Detail
Not to Scale

Remove trees only as necessary for sanitary sewer construction and only with permission of Developer or Baughman Co. Cost of removal to be incidental to lump sum bid item. "Site Clearing & Restoration".

All excavation for Line 1, from Station 2+04.8 to Station 6+73.2, shall be sand backfilled to within two feet of existing grade. The sand shall be vibrated and water jetted during backfilling. Cost shall be incidental to pipe cost.

SEWER SERVICE TABLE

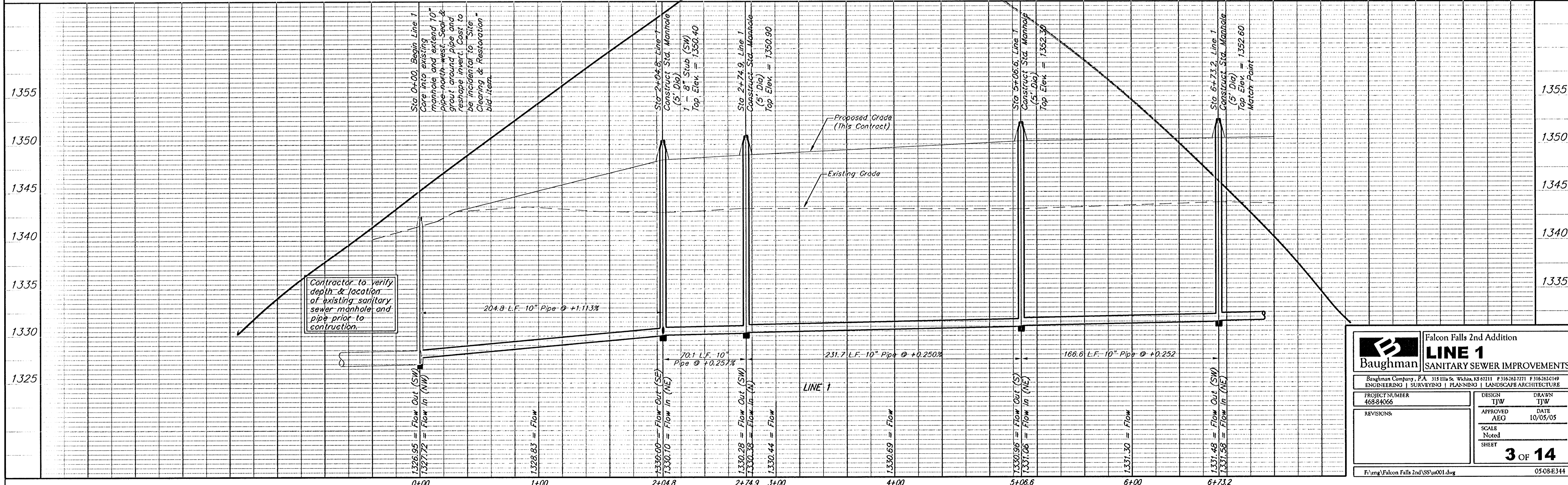
NUMBER	TYPE	LOCATION				FOR INFORMATION ONLY	
		LOT NO.	BLOCK NO.	LINE NO.	STATION DIRECTION	APPROXIMATE LENGTH	4" PIPE
1	10" x 4" Tee Saddle	5	C	1	1+60/Rt.	14.5'	5'
2	4" x 4" Tee Saddle	6	C	1	2+75/Rt.	15.5'	10'
3	10" x 4" Tee Saddle	7	C	1	3+52/Rt.	18.0'	10'

NOTE: Vertical Riser Pipe shall be extended to 2' minimum above ground water elevation and 4' maximum below proposed ground elevation.

SEWER SERVICE TABLE

NUMBER	TYPE	LOCATION				FOR INFORMATION ONLY	
		LOT NO.	BLOCK NO.	LINE NO.	STATION DIRECTION	APPROXIMATE LENGTH	4" PIPE
4	10" x 4" Tee Saddle	8	C	1	4+32/Rt.	16.0'	10'
5	4" x 4" Tee Saddle	9	C	1	5+07/Rt.	16.5'	15'
6	10" x 4" Tee Saddle	10	C	1	5+97/Rt.	16.0'	4'

NOTE: Vertical Riser Pipe shall be extended to 2' minimum above ground water elevation and 4' maximum below proposed ground elevation.



Contractor to verify depth & location of existing sanitary sewer manhole and pipe prior to construction.

Baughman Falcon Falls 2nd Addition
LINE 1
SANITARY SEWER IMPROVEMENTS

PROJECT NUMBER: 468-84066
DESIGN: TJW
APPROVED: AEG
DATE: 10/05/05
SCALE: Noted
SHEET: 3 OF 14

F:\eng\Falcon Falls 2nd\SS\ss001.dwg 05-08-E314