

BENCHMARKS

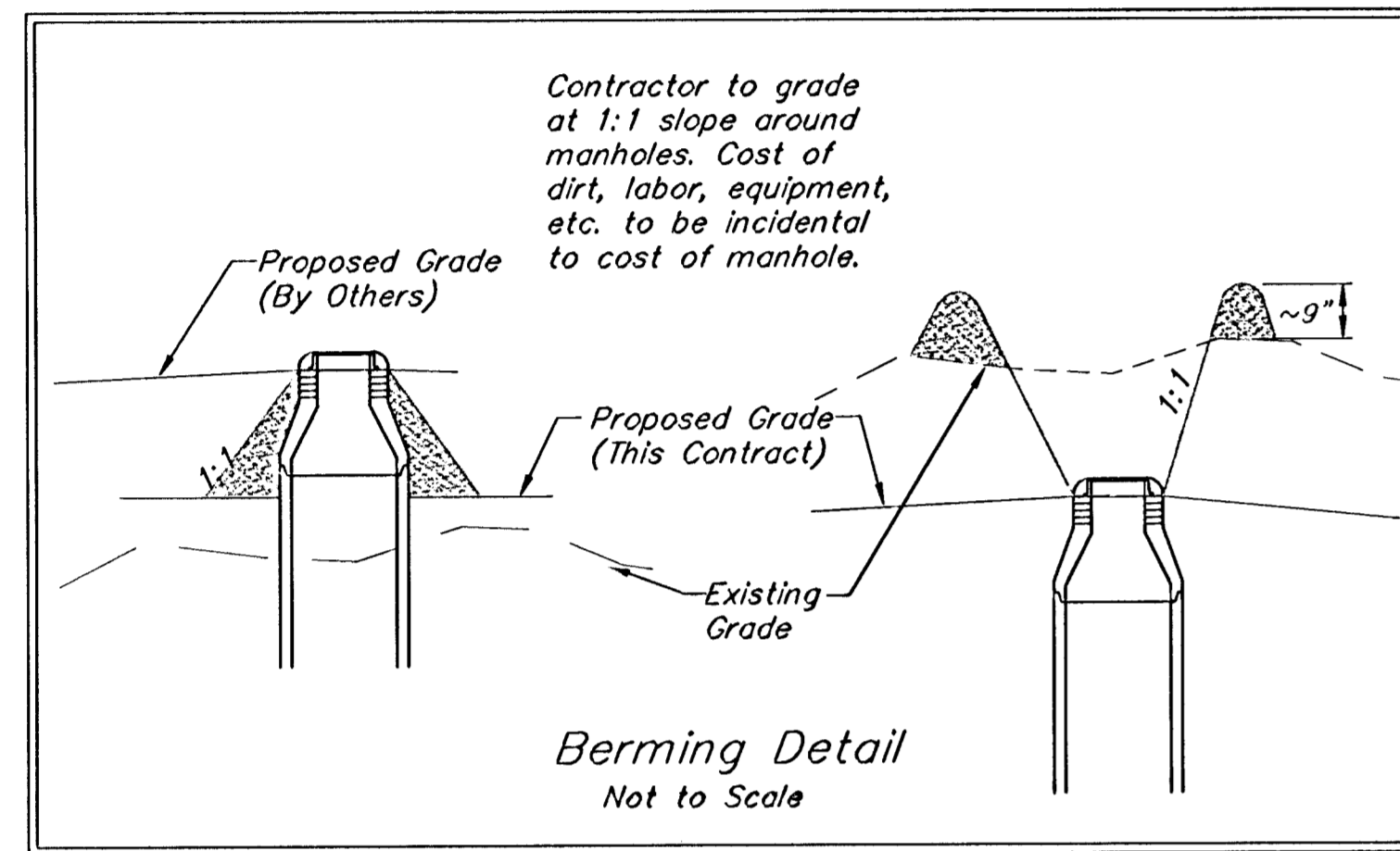
BM #1: Brass Plate on North Hub Guard of R.C.B.C. 50' East of NW Corner NE 1/2, Sec. 22, Twp. 26-S, R-1-E.
Elev. = 1371.83 (NGVD29)

BM #2: "□" cut on East Hub Guard of R.C.B.C., 110' S. of the SE Cor., SE 1/4, Sec. 22, Twp. 26-S, R-1-E.
Elev. = 1359.54 (NGVD29)

Sta 6+73.2, Line 1
Match Point

Sta 11+78.5, End Line 1
Construct Std. Manhole
(5' Dia)
1 - 10" Stub (N)
1 - 4" Stub (E)
Top Elev. = 1352.30

Scale: 1" = 40' Horizontal
1" = 5' Vertical
• = Iron



Sta 8+16.5, Line 1
Construct Std. Manhole
(5' Dia)
1 - 4" Stub (NE)
Top Elev. = 1352.20

Sta 8+90.7, Line 1
Construct Std. Manhole
(5' Dia)
1 - 4" Stub (NE)
Top Elev. = 1351.40

SEWER SERVICE TABLE

NUMBER	TYPE	LOCATION			FOR INFORMATION ONLY	
		LOT NO.	BLOCK NO.	LINE NO.	STATION DIRECTION	APPROXIMATE LENGTH 4" PIPE
7	10" x 4" Tee Saddle	11	C	1	7+49/Rt.	16.0' 22'
8	4" x 4" Tee Saddle	12	C	1	8+17/Rt.	15.5' 11'
9	4" x 4" Tee Saddle	13	C	1	8+91/Rt.	14.5' 5'

NOTE: Vertical Riser Pipe shall be extended to 2' minimum above ground water elevation and 4' maximum below proposed ground elevation.

SEWER SERVICE TABLE

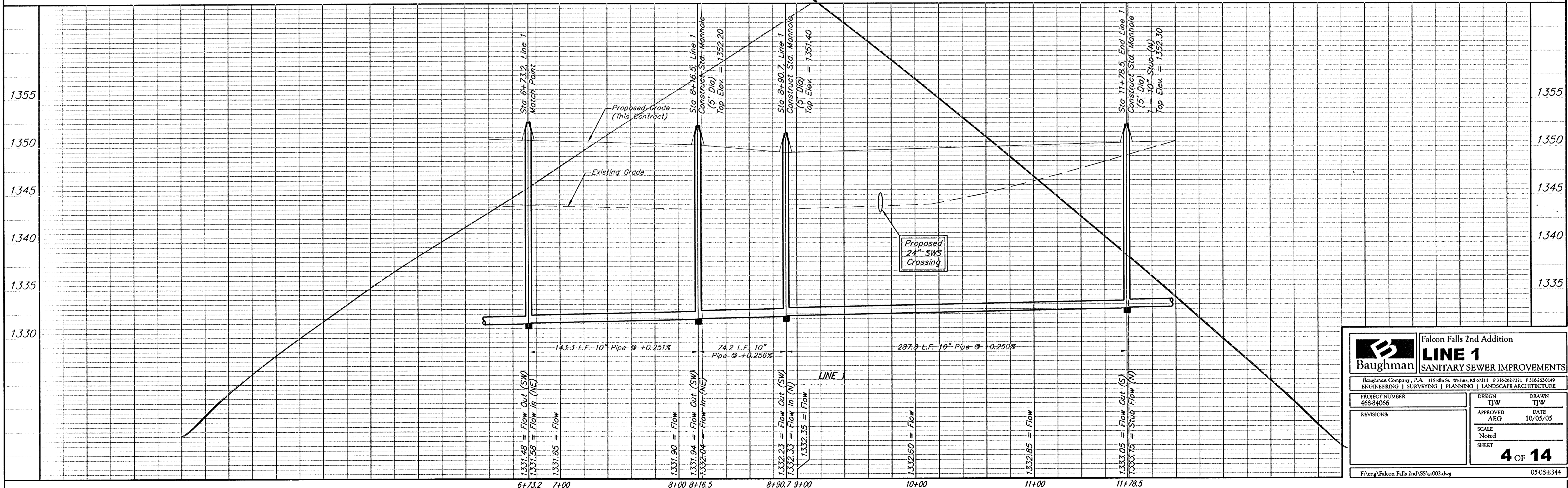
NUMBER	TYPE	LOCATION			FOR INFORMATION ONLY	
		LOT NO.	BLOCK NO.	LINE NO.	STATION DIRECTION	APPROXIMATE LENGTH 4" PIPE
10	10" x 4" Tee Saddle	14	C	1	10+42/Rt.	14.5' 10'
11	10" x 4" Tee Saddle	15	C	1	10+52/Rt.	14.5' 10'
12	4" x 4" Tee Saddle	16	C	1	11+79/Rt.	14.5' 10'

NOTE: Vertical Riser Pipe shall be extended to 2' minimum above ground water elevation and 4' maximum below proposed ground elevation.

See Revised Sheet

Remove trees only as necessary for sanitary sewer construction and only with permission of Developer or Baughman Co. Cost of removal to be incidental to lump sum bid item "Site Clearing & Restoration".

All excavation for Line 1, from Station 6+73.2 to Station 11+78.5, shall be sand backfilled to within two feet of existing grade. The sand shall be vibrated and water jetted during backfilling. Cost shall be incidental to pipe cost.



Baughman		Falcon Falls 2nd Addition	
LINE 1		SANITARY SEWER IMPROVEMENTS	
Baughman Company, P.A. 315 1/2 W. 1st St., Waukegan, IL 60059-1111 F: 815-262-1111 E: info@baughman.com			
PROJECT NUMBER 468-84066	DESIGN TJW	DRAWN TJW	DATE 10/05/05
REVISIONS:	APPROVED AEG	SCALE Noted	SHEET 4 OF 14
F:\eng\Falcon Falls 2nd\SS\002.dwg		05/08/04	