

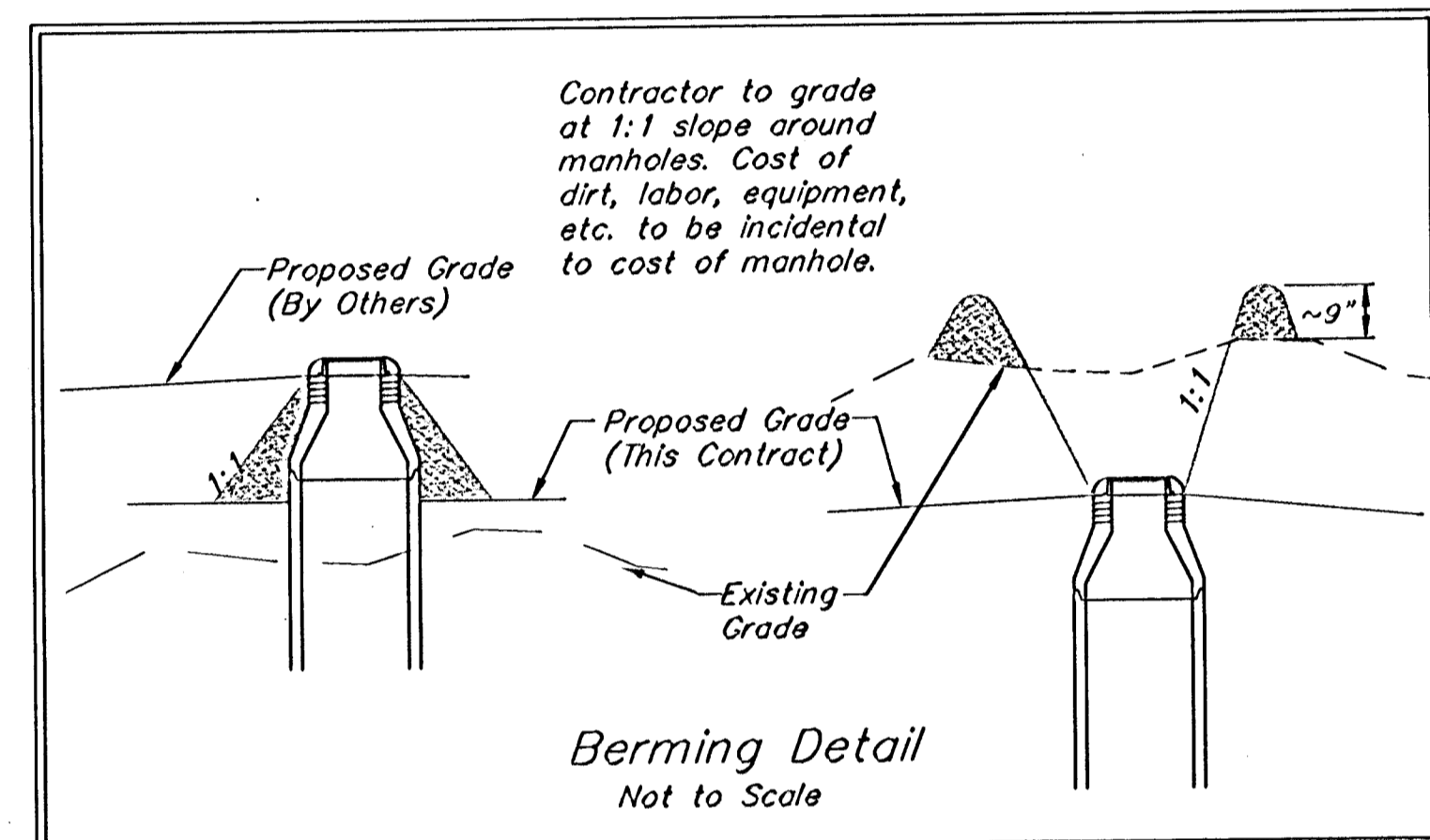
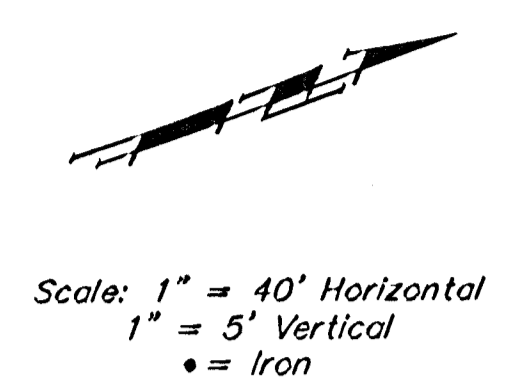
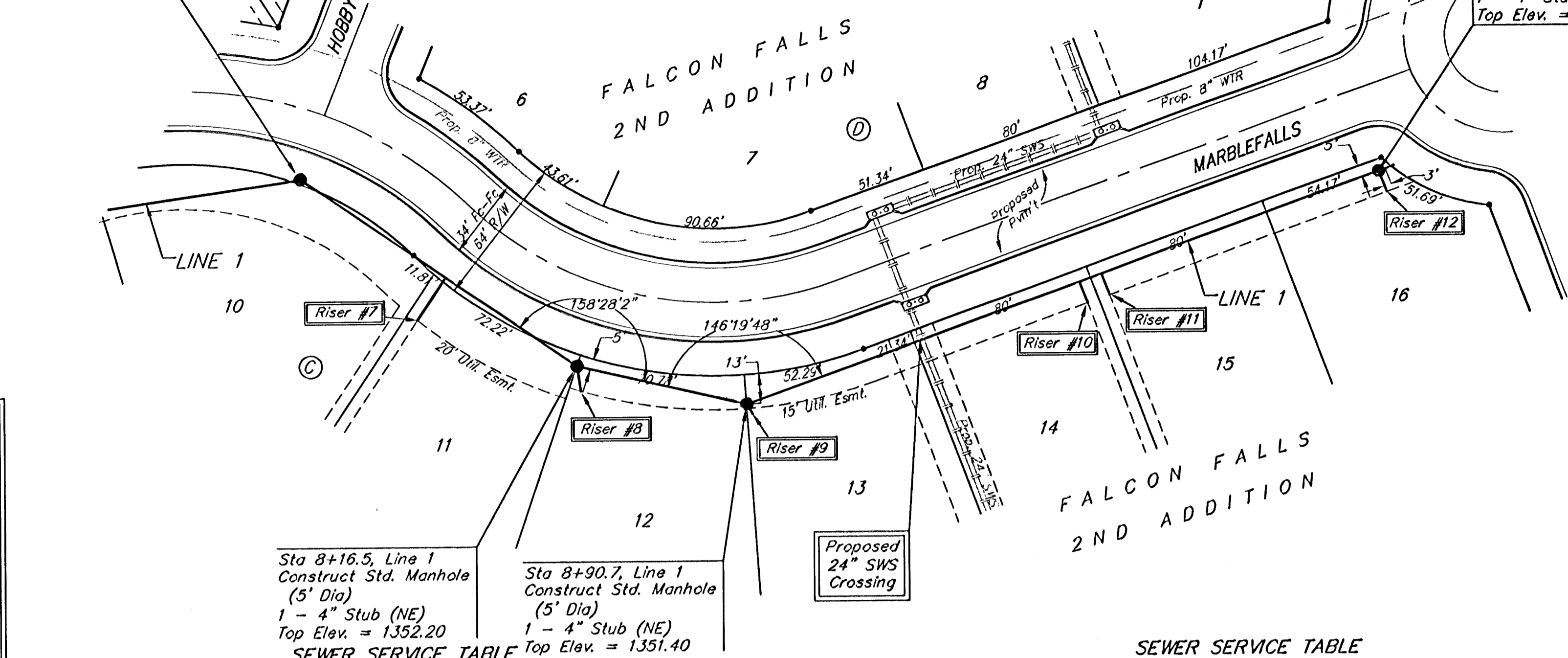
**BENCHMARKS**

BM #1: Brass Plate on North Hub Guard of R.C.B.C. 50' East of NW Corner NE 1/2, Sec. 22, Twp. 26-S, R-1-E. Elev. = 1371.83 (NGVD29)

BM #2: "X" cut on East Hub Guard of R.C.B.C. 110' S. of the SE Cor., SE 1/4, Sec. 22, Twp. 26-S, R-1-E. Elev. = 1359.54 (NGVD29)

Sta 6+73.2, Line 1 Match Point

Sta 11+78.5, End Line 1 Construct Std. Manhole (5' Dia) 1 - 10" Stub (N) 1 - 4" Stub (E) Top Elev. = 1352.30



Remove trees only as necessary for sanitary sewer construction and only with permission of Developer or Baughman Co. Cost of removal to be incidental to lump sum bid item "Site Clearing & Restoration".

All excavation for Line 1, from Station 6+73.2 to Station 11+78.5, shall be sand backfilled to within two feet of existing grade. The sand shall be vibrated and water jetted during backfilling. Cost shall be incidental to pipe cost.

**SEWER SERVICE TABLE**

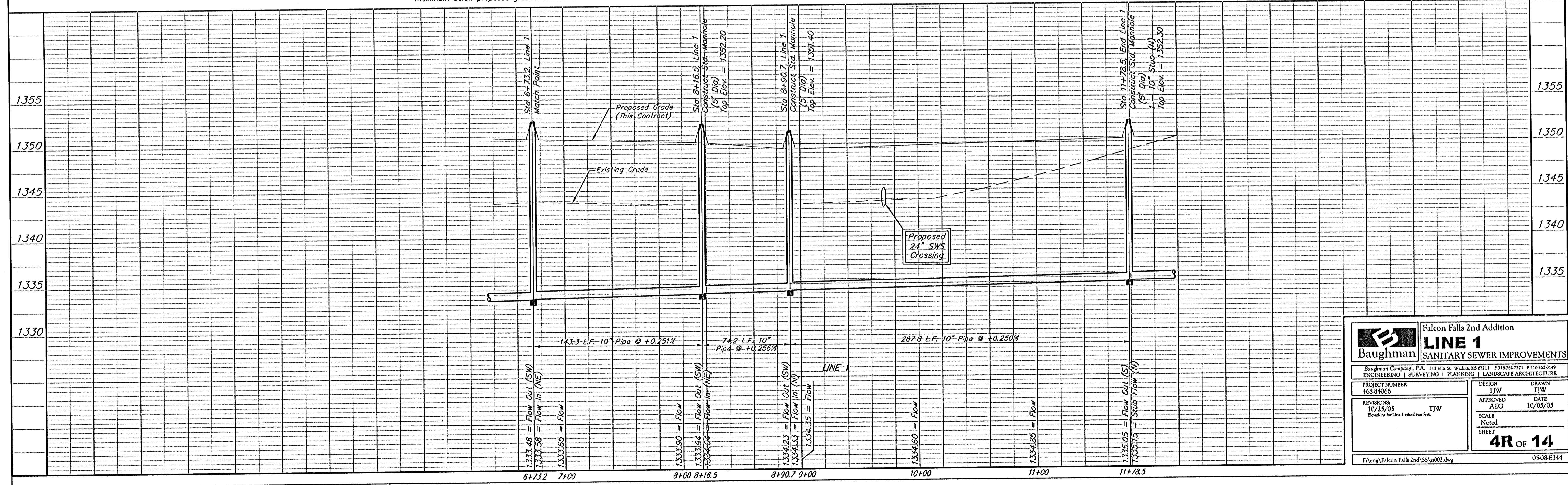
NUMBER	TYPE	LOCATION			FOR INFORMATION ONLY	
		LOT NO.	BLOCK NO.	LINE NO.	STATION DIRECTION	APPROXIMATE LENGTH 4" PIPE VERTICAL HORIZONTAL
7	10" x 4" Tee Saddle	11	C	1	7+49/Rt.	16.0' 22'
8	4" x 4" Tee Saddle	12	C	1	8+17/Rt.	15.5' 11'
9	4" x 4" Tee Saddle	13	C	1	8+91/Rt.	14.5' 5'

**SEWER SERVICE TABLE**

NUMBER	TYPE	LOCATION			FOR INFORMATION ONLY	
		LOT NO.	BLOCK NO.	LINE NO.	STATION DIRECTION	APPROXIMATE LENGTH 4" PIPE VERTICAL HORIZONTAL
10	10" x 4" Tee Saddle	14	C	1	10+42/Rt.	14.5' 10'
11	10" x 4" Tee Saddle	15	C	1	10+52/Rt.	14.5' 10'
12	4" x 4" Tee Saddle	16	C	1	11+79/Rt.	14.5' 10'

NOTE: Vertical Riser Pipe shall be extended to 2' minimum above ground water elevation and 4' maximum below proposed ground elevation.

NOTE: Vertical Riser Pipe shall be extended to 2' minimum above ground water elevation and 4' maximum below proposed ground elevation.



**Baughman** Falcon Falls 2nd Addition  
**LINE 1** SANITARY SEWER IMPROVEMENTS  
 Baughman Company, P.A. 115 Elm St., Wilkes-Barre, PA 18702-1019  
 ENGINEERING | SURVEYING | PLANNING | LANDSCAPE ARCHITECTURE  
 PROJECT NUMBER: 46834066  
 DESIGN: TJW  
 DRAWN: TJW  
 APPROVED: AEG  
 DATE: 10/05/05  
 REVISIONS: 10/25/05 TJW  
 Decision for Line 1 raised two feet.  
 SCALE: Noted  
 SHEET: 4R OF 14  
 File: Falcon Falls 2nd/SS/002.dwg 05-08-E344