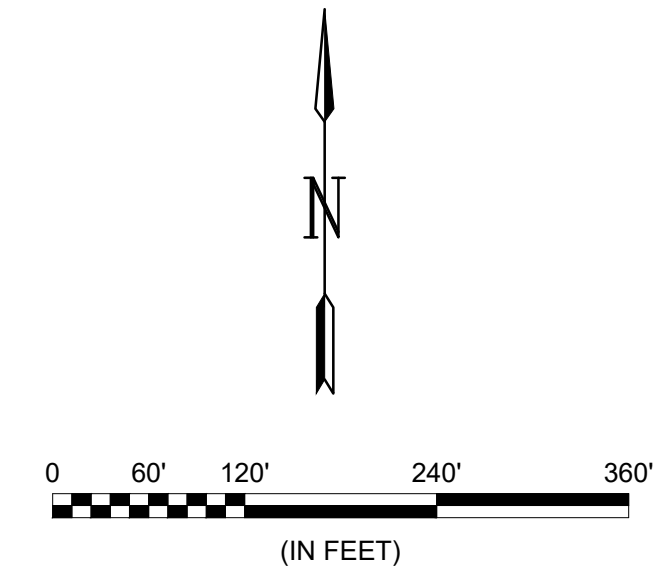
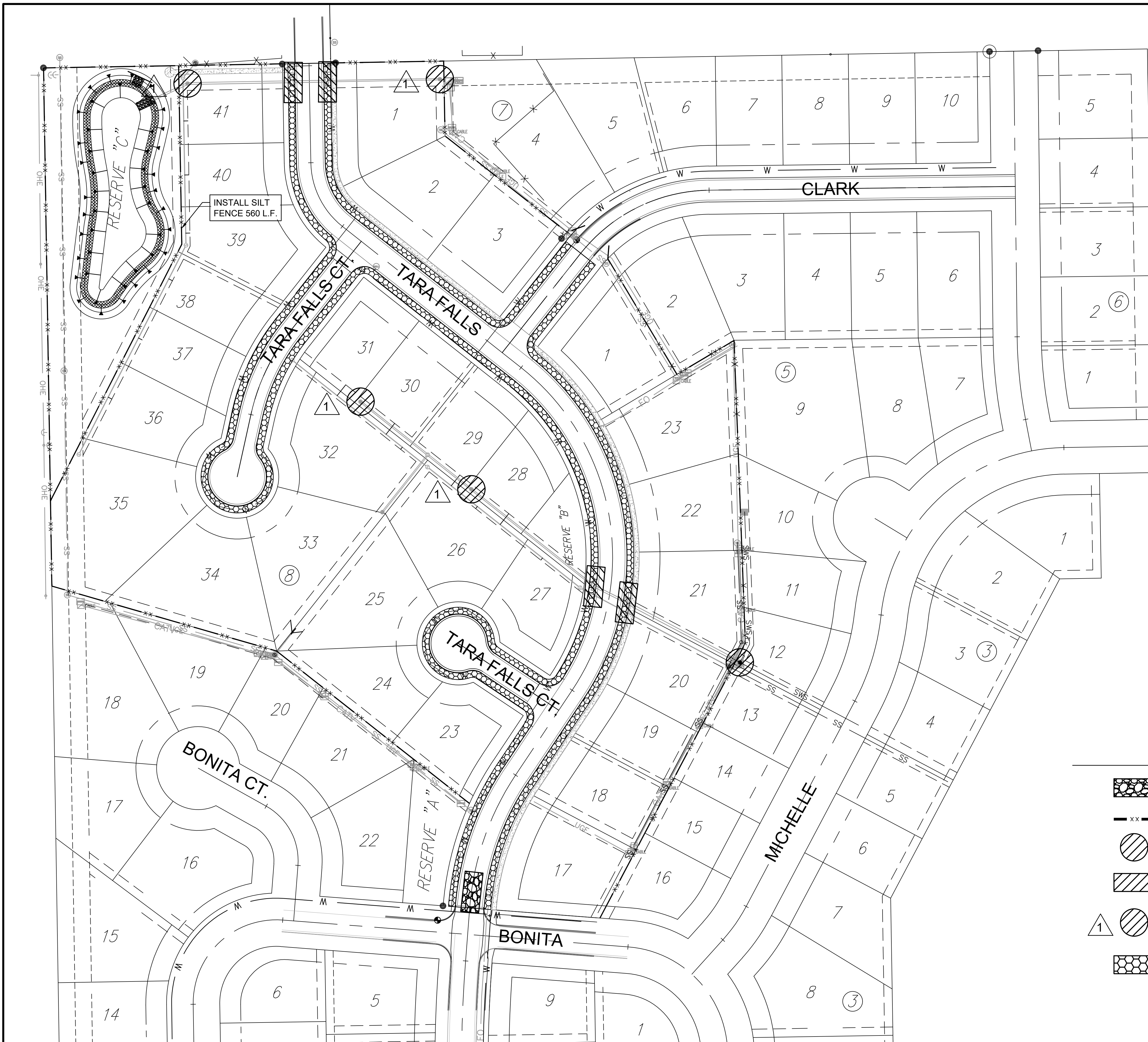


File: L:\2022\22T41001 - Casa Bella Addition Ph 8 ErosionControl & SWSEROSION CONTROL PLAN.dwg Last Save: 10/3/2023 3:26 PM Last saved by: MCarraeraPiedra
 Last plotted by: Carraera-Piedra, Mariela Plot Style: 1:2, 9849 Plot Date: 11/15/2023 4:43 PM Plotter used: None



LEGEND

- MAINTAIN CONSTRUCTION ENTRANCE (1 EACH)
- MAINTAIN SILT FENCE (2,920 LF)
- MAINTAIN DROP INLET PROTECTION (1 EACH)
- INSTALL CURB INLET PROTECTION (4 EACH)
- INSTALL DROP INLET PROTECTION (4 EACH)
- INSTALL EROSION CONTROL MAT (3,245 SY)



© 2023 GARVER, LLC
 THIS DOCUMENT, ALONG WITH THE IDEAS AND DESIGNS CONVEYED HEREIN, SHALL BE CONSIDERED INSTRUMENTS OF PROFESSIONAL SERVICE AND ARE PROPERTY OF GARVER, LLC. ANY USE, REPRODUCTION, OR DISTRIBUTION OF THIS DOCUMENT, ALONG WITH THE IDEAS AND DESIGN CONTAINED HEREIN, IS PROHIBITED UNLESS AUTHORIZED IN WRITING BY GARVER, LLC OR EXPLICITLY ALLOWED IN THE GOVERNING PROFESSIONAL SERVICES AGREEMENT FOR THIS WORK.

1995 Midfield Road
 Wichita, KS 67209
 (316) 264-8008

| REV. | DATE | DESCRIPTION | BY |
|------|------|-------------|----|
| | | | |



CITY OF WICHITA
 WICHITA, KANSAS
 CASA BELLA SECOND
 ADDITION PHASE 8
 PAVING & SWS

EROSION CONTROL PLAN

JOB NO.: 22T41001
 DATE: NOV 2023
 DESIGNED BY: .
 DRAWN BY: .

BAR IS ONE INCH ON ORIGINAL DRAWING
 IF NOT ONE INCH ON THIS SHEET, ADJUST SCALES ACCORDINGLY.

DRAWING NUMBER
 SHEET NUMBER **33** OF **42**