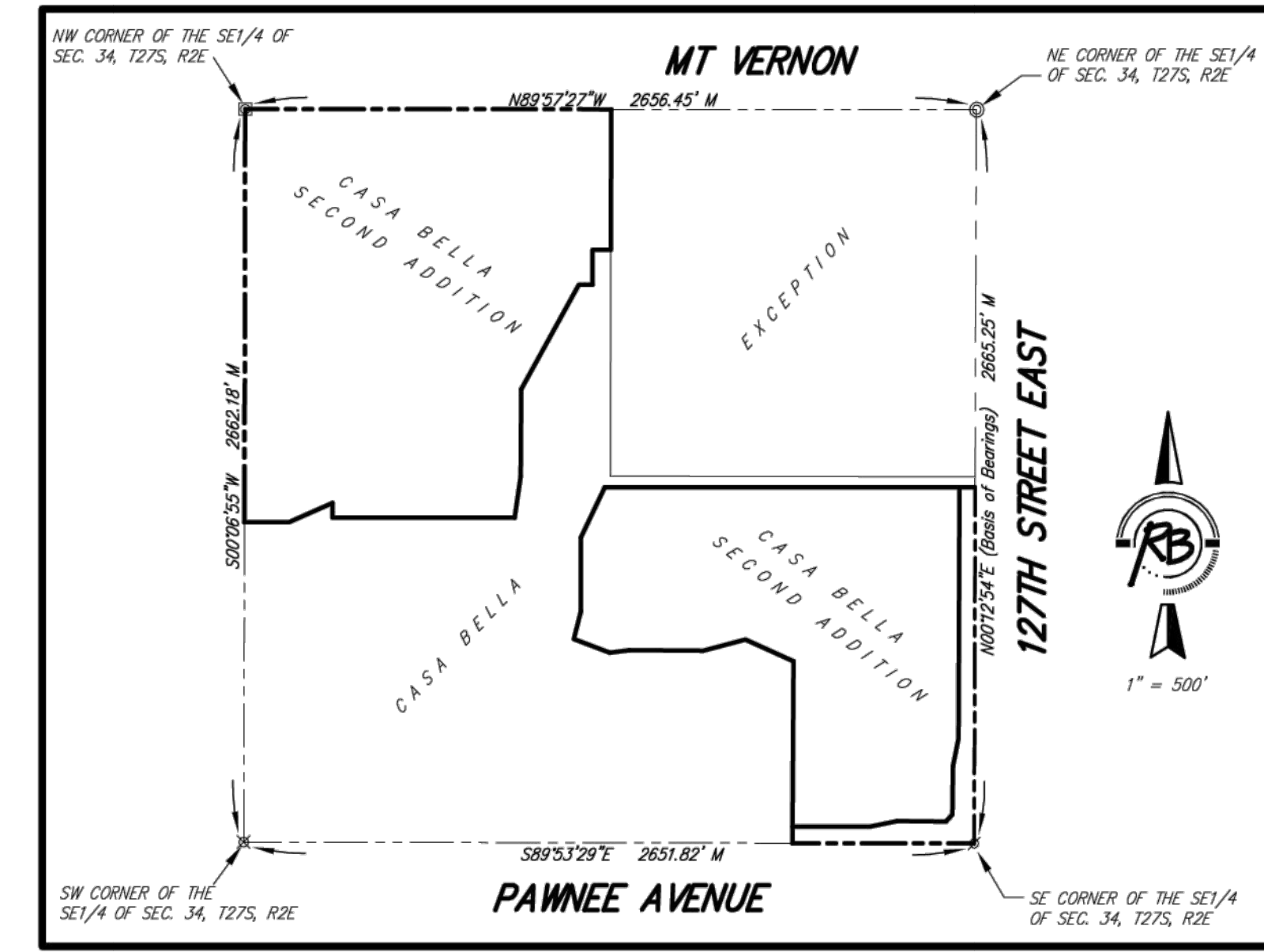


CASA BELLA SECOND ADDITION

Wichita, Sedgwick County, Kansas



BENCH MARK: SRB BRASS DISC 55.45' E.
& 5.13' S. OF THE N.W. COR., SW1/4, SEC. 35,
T27S, R2E
ELEVATION = 1348.35 (NGVD29)

P = Platted (Casa Bella)
M = Measured

SURVEY MARKER LEGEND

- ⊠ PK NAIL IN CONCRETE (FOUND - ORIGIN UNKNOWN)
- 1/2" IRON PIPE (FOUND - ORIGIN UNKNOWN)
- ⊙ 3/4" IRON PIPE (FOUND - ORIGIN UNKNOWN)
- ⊗ 5/8" REBAR W/GARBER CAP (FOUND)
- ⊗ 1" BAR (FOUND - ORIGIN UNKNOWN)
- ⊗ 5/8" REBAR W/SRB CAP (FOUND)
- ⊗ 5/8" REBAR W/RAB CAP (FOUND)
- 5/8" REBAR W/RAB CAP (SET)

BLOCK	LOT NO.	ELEVATION (NGVD29)
2	1, 2, 3, 4, 5, 6, 7	1345.4
3	10, 11, 12	1345.4
3	1, 2, 3, 4, 5, 6, 7, 8, 9	1336.4
6	1, 2, 3, 4, 5	1336.8

FOR INFORMATION ONLY

Sheet 42/42



Ruggles & Bohm, P.A.
Engineering, Surveying, Land Planning
924 North Main (316) 264-8008
Wichita, Kansas 67203 (316) 264-4621 fax
www.rbkansas.com E-mail: info@rbkansas.com

DWG FILE: SURVEY BASE
PROJECT NO. 3253P
JULY 24, 2008