

CONTRACTOR SHALL REMOVE/ TRIM EXISTING TREES AS NECESSARY. TREE REMOVAL/TRIMMING SHALL BE INCIDENTAL TO THE BID ITEM FOR "SITE CLEARING".

NOTE: ELEVATIONS ARE SHOWN AS TYPE 4 CURB. CURB SHALL BE CONSTRUCTED AS TYPE 2 CURB & GUTTER AS INDICATED BELOW.

REMOVE EXISTING GRAVEL. COST OF REMOVAL SHALL BE INCIDENTAL TO THE BID ITEM FOR "SITE CLEARING".

CONSTRUCT 5' SIDEWALK (AE)(6"). AS INDICATED WALK ELEV. = TOP OF FULL CURB + 0.3' ROLL CURB + 0.55'

CONSTRUCT 5" ASPHALT CONCRETE PAVEMENT W/ 5" CRUSHED ROCK BASE, REINFORCED.

CONSTRUCT TYPE 1A INLET HOOKUPS BOTH SIDES.

EXISTING BUILDING (TO BE REMOVED PRIOR TO CONSTRUCTION)

REMOVE EXISTING WELL. COST OF REMOVAL SHALL BE INCIDENTAL TO THE BID ITEM FOR "SITE CLEARING".

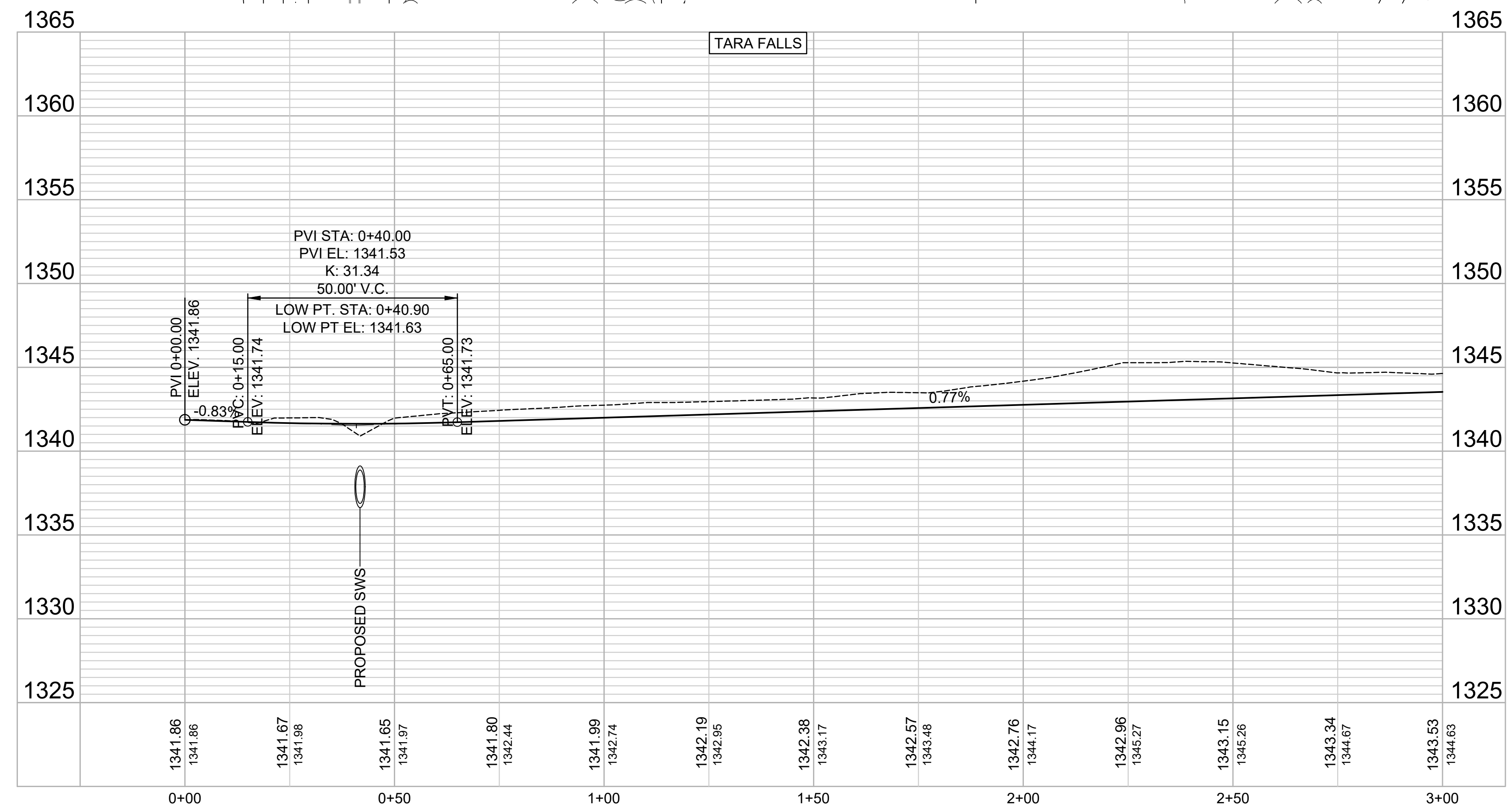
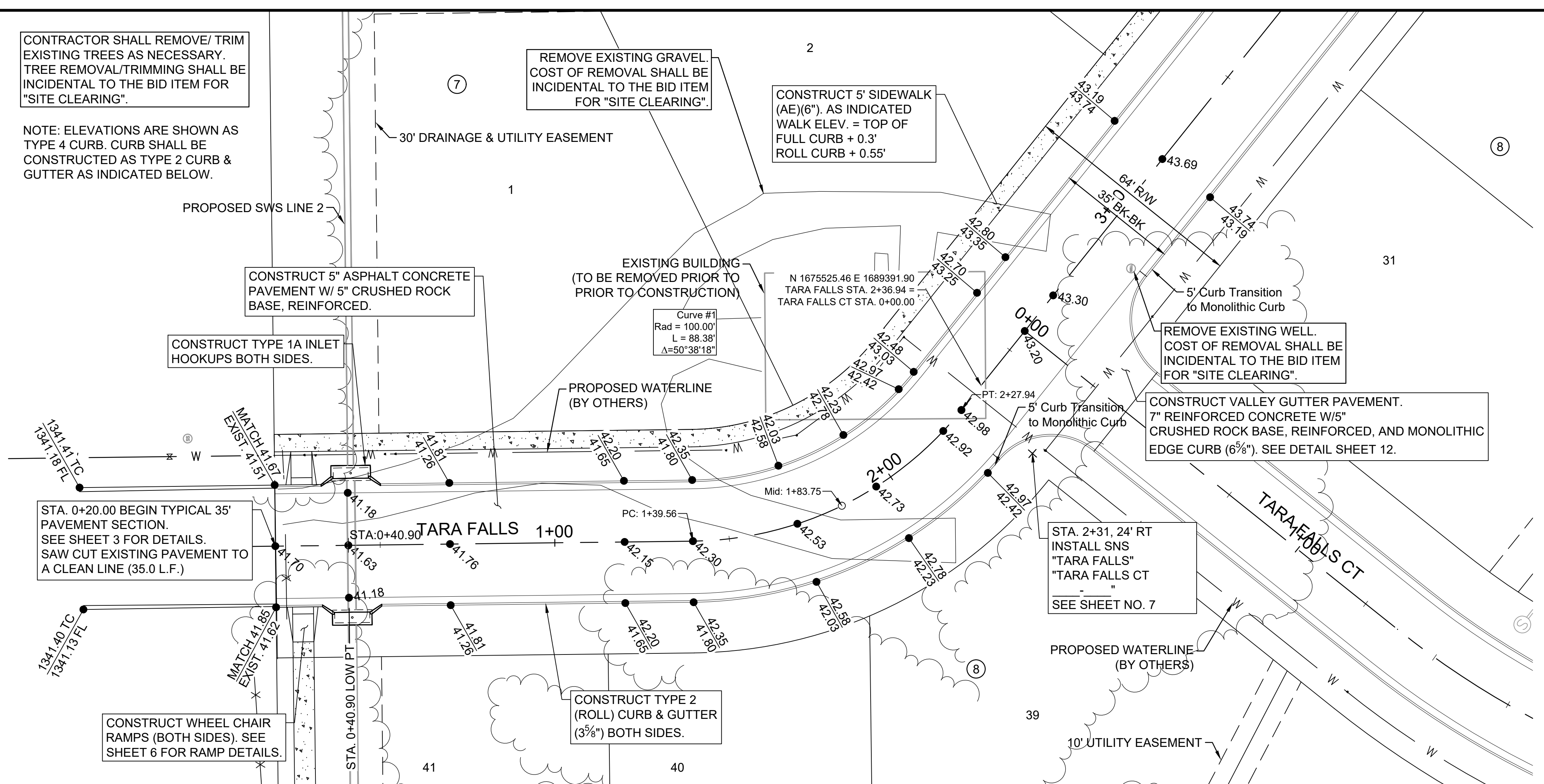
CONSTRUCT VALLEY GUTTER PAVEMENT. 7" REINFORCED CONCRETE W/5" CRUSHED ROCK BASE, REINFORCED, AND MONOLITHIC EDGE CURB (6 5/8"). SEE DETAIL SHEET 12.

STA. 0+20.00 BEGIN TYPICAL 35' PAVEMENT SECTION. SEE SHEET 3 FOR DETAILS. SAW CUT EXISTING PAVEMENT TO A CLEAN LINE (35.0 L.F.)

CONSTRUCT WHEEL CHAIR RAMPS (BOTH SIDES). SEE SHEET 6 FOR RAMP DETAILS.

CONSTRUCT TYPE 2 (ROLL) CURB & GUTTER (3 3/4") BOTH SIDES.

STA. 2+31.24' RT INSTALL SNS "TARA FALLS" "TARA FALLS CT" SEE SHEET NO. 7



GARVER
 © 2023 GARVER, LLC
 THIS DOCUMENT, ALONG WITH THE IDEAS AND DESIGNS CONVEYED HEREIN, SHALL BE CONSIDERED INSTRUMENTS OF PROFESSIONAL SERVICE AND ARE PROPERTY OF GARVER, LLC. ANY USE, REPRODUCTION, OR DISTRIBUTION OF THIS DOCUMENT, ALONG WITH THE IDEAS AND DESIGN CONTAINED HEREIN, IS PROHIBITED UNLESS AUTHORIZED IN WRITING BY GARVER, LLC OR EXPLICITLY ALLOWED IN THE GOVERNING PROFESSIONAL SERVICES AGREEMENT FOR THIS WORK.

1995 Midfield Road
 Wichita, KS 67209
 (316) 264-8008

REV.	DATE	DESCRIPTION	BY

CITY OF WICHITA
 WICHITA, KANSAS
CASA BELLA SECOND
 ADDITION PHASE 8
 PAVING & SWS

TARA FALLS (1 OF 3)

JOB NO.: 22T41001
 DATE: NOV 2023
 DESIGNED BY: .
 DRAWN BY: .

BAR IS ONE INCH ON ORIGINAL DRAWING
 0 1" IF NOT ONE INCH ON THIS SHEET, ADJUST SCALES ACCORDINGLY.

DRAWING NUMBER

SHEET NUMBER **9** OF **42**

File: L:\2022\22T41001 - Casa Bella Addition Ph 8 Eng\Drawings\C3D\PAVING & SWS\TARA FALLS (1 OF 3).dwg Last Save: 11/15/2023 4:09 PM Last saved by: MCarneraPiedra
 Last plotted by: Carnera-Piedra, Mariela Plot Style: --- Plot Scale: 1:2.9849 Plot Date: 11/15/2023 4:37 PM Plotter used: None