

BENCHMARKS

BM #1: Brass Plate on North Hub Guard of R.C.B.C., 50' East of NW Corner NE 1/2, Sec. 22, Twp. 26-S, R-1-E.
Elev. = 1371.83 (NGVD29)

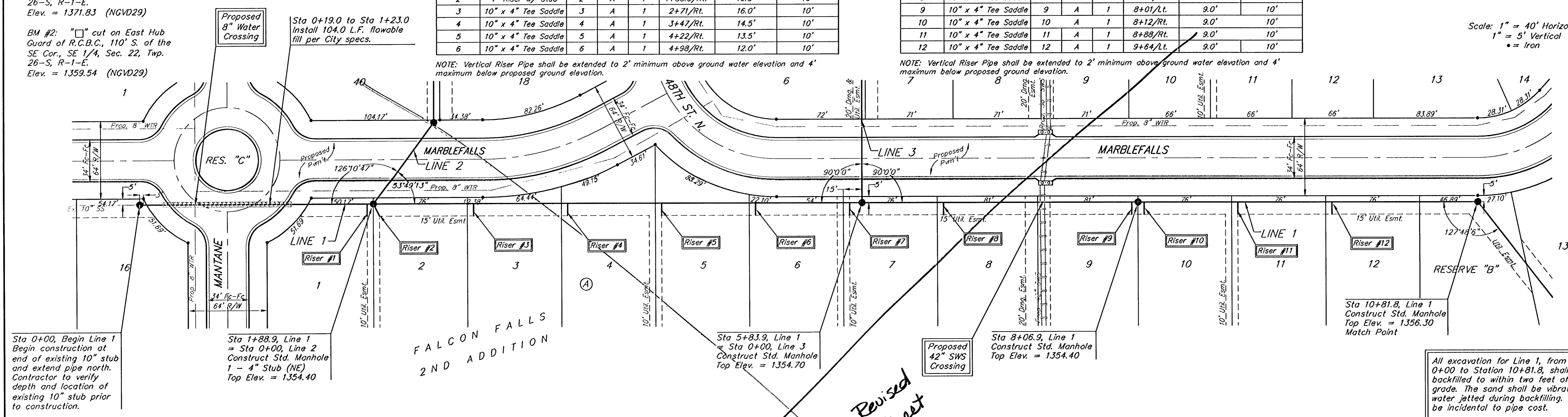
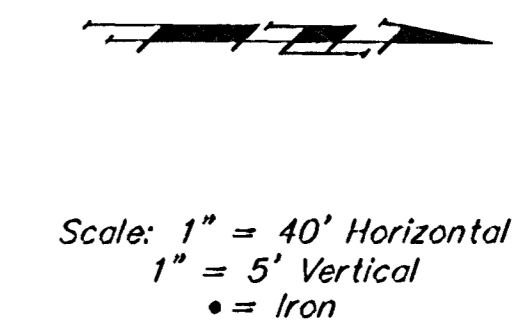
BM #2: " " cut on East Hub Guard of R.C.B.C., 110' S. of the SE Cor., SE 1/4, Sec. 22, Twp. 26-S, R-1-E.
Elev. = 1359.54 (NGVD29)

NUMBER	TYPE	LOCATION				FOR INFORMATION ONLY	
		LOT NO.	BLOCK NO.	LINE NO.	STATION\ DIRECTION	APPROXIMATE LENGTH 4" PIPE	
						VERTICAL	HORIZONTAL
1	10" x 4" Tee Saddle	1	A	1	1+83.9/RT.	16.5'	10'
2	4" Riser w/ Stub	2	A	1	1+88.9/RT.	16.5'	10'
3	10" x 4" Tee Saddle	3	A	1	2+71/RT.	16.0'	10'
4	10" x 4" Tee Saddle	4	A	1	3+47/RT.	14.5'	10'
5	10" x 4" Tee Saddle	5	A	1	4+22/RT.	13.5'	10'
6	10" x 4" Tee Saddle	6	A	1	4+98/RT.	12.0'	10'

NOTE: Vertical Riser Pipe shall be extended to 2' minimum above ground water elevation and 4' maximum below proposed ground elevation.

NUMBER	TYPE	LOCATION				FOR INFORMATION ONLY	
		LOT NO.	BLOCK NO.	LINE NO.	STATION\ DIRECTION	APPROXIMATE LENGTH 4" PIPE	
						VERTICAL	HORIZONTAL
7	10" x 4" Tee Saddle	7	A	1	5+74/RT.	10.0'	10'
8	10" x 4" Tee Saddle	8	A	1	6+50/RT.	9.0'	10'
9	10" x 4" Tee Saddle	9	A	1	8+01/LT.	9.0'	10'
10	10" x 4" Tee Saddle	10	A	1	8+12/RT.	9.0'	10'
11	10" x 4" Tee Saddle	11	A	1	8+88/RT.	9.0'	10'
12	10" x 4" Tee Saddle	12	A	1	9+64/LT.	9.0'	10'

NOTE: Vertical Riser Pipe shall be extended to 2' minimum above ground water elevation and 4' maximum below proposed ground elevation.



Sta 0+00, Begin Line 1
Begin construction at
end of existing 10" stub
and extend pipe north.
Contractor to verify
depth and location of
existing 10" stub prior
to construction.

Sta 1+88.9, Line 1
= Sta 0+00, Line 2
Construct Std. Manhole
1 - 4" Stub (NE)
Top Elev. = 1354.40

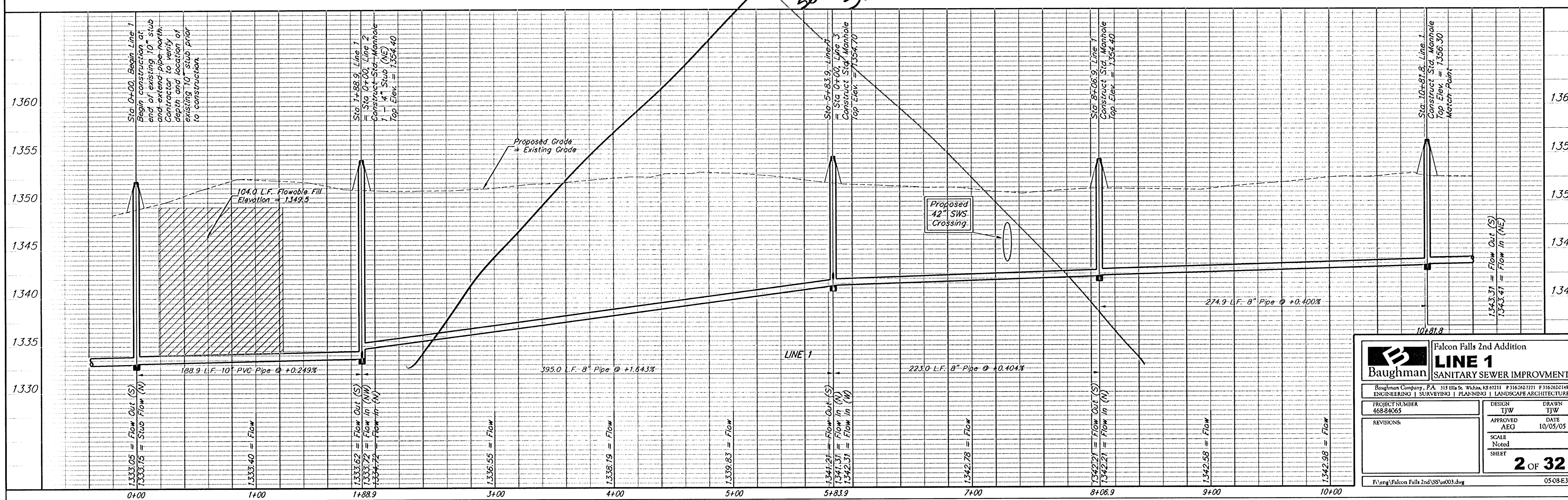
Sta 5+83.9, Line 1
= Sta 0+00, Line 3
Construct Std. Manhole
Top Elev. = 1354.70

Sta 8+08.9, Line 1
Construct Std. Manhole
Top Elev. = 1354.40

Sta 10+81.8, Line 1
Construct Std. Manhole
Top Elev. = 1356.30
Match Point

All excavation for Line 1, from Station 0+00 to Station 10+81.8, shall be sand backfilled to within two feet of existing grade. The sand shall be vibrated and water jetted during backfilling. Cost shall be incidental to pipe cost.

See Revised Sheet



Baughman		Falcon Falls 2nd Addition	
LINE 1		SANITARY SEWER IMPROVEMENTS	
Baughman Company, P.A. 315 Ella St. Wichita, KS 67211 P 316-263-7771 F 316-263-0149			
ENGINEERING SURVEYING PLANNING LANDSCAPE ARCHITECTURE			
PROJECT NUMBER 46884065	DESIGN TJW	DRAWN TJW	DATE 10/05/05
REVISIONS	APPROVED AEG	SCALE Noted	
		SHEET 2 OF 32	
F:\eng\Falcon Falls 2nd\SS\w003.dwg			0508E344