

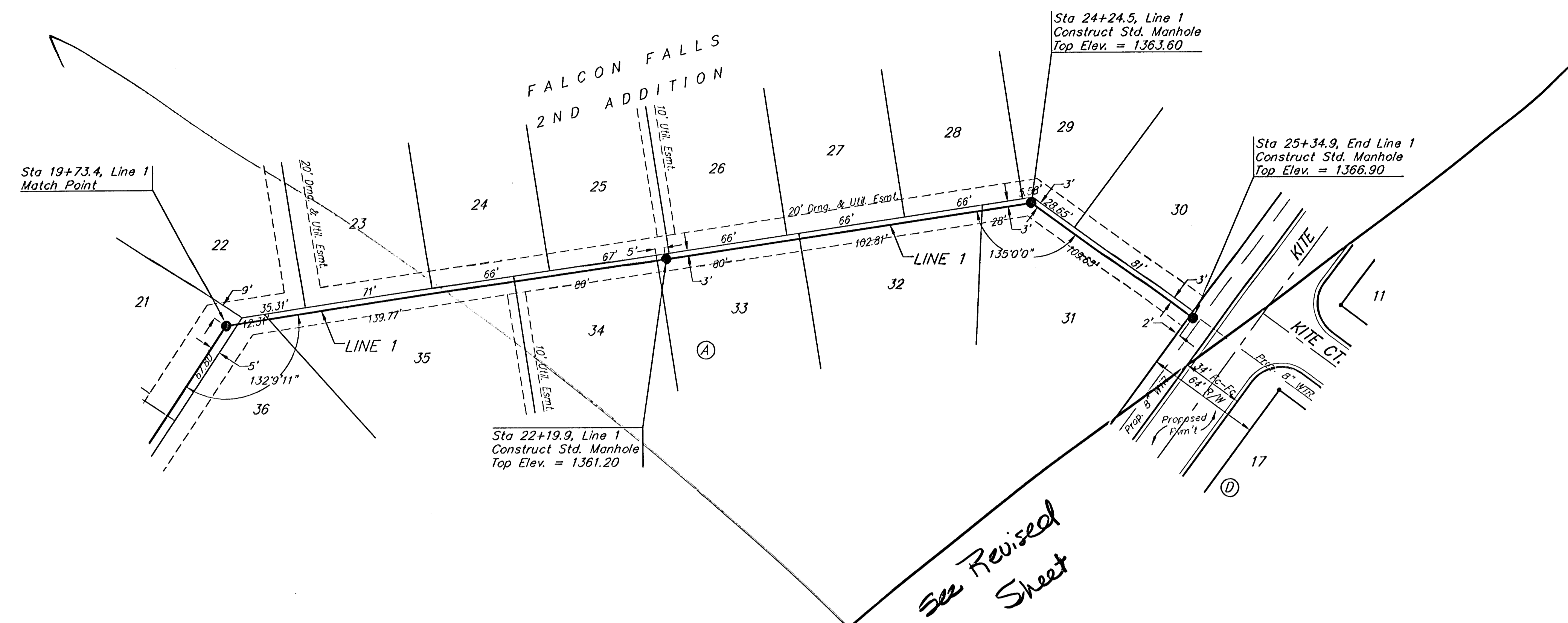
**BENCHMARKS**

BM #1: Brass Plate on North Hub Guard of R.C.B.C., 50' East of NW Corner NE 1/2, Sec. 22, Twp. 26-S, R-1-E.  
Elev. = 1371.83 (NGVD29)

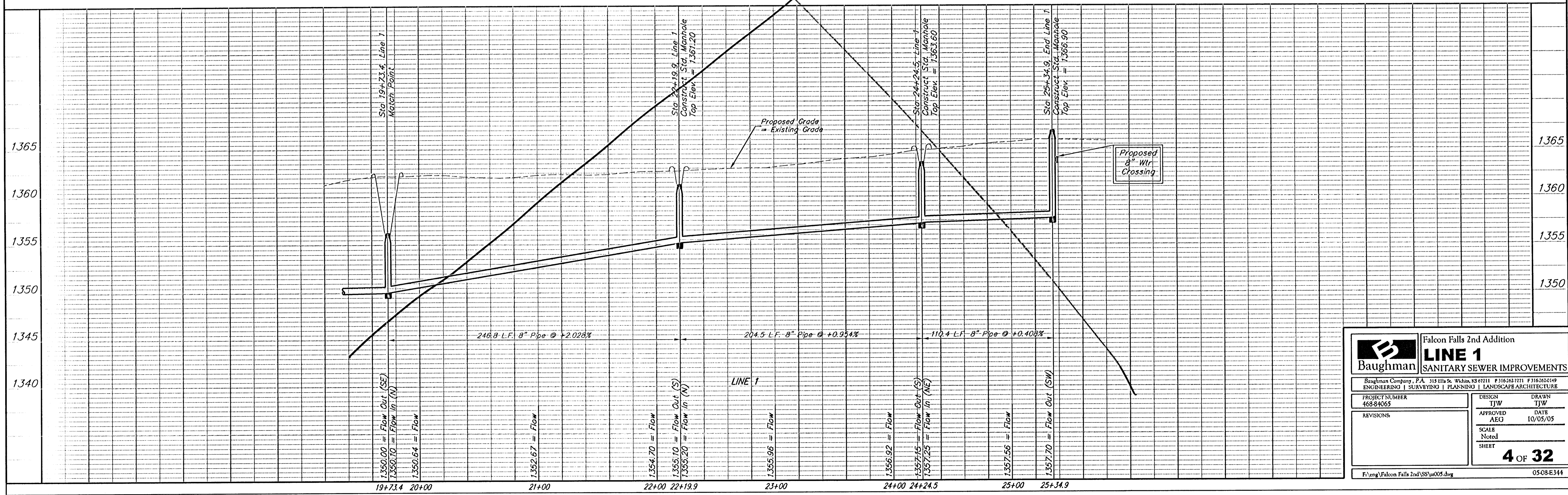
BM #2: "□" cut on East Hub Guard of R.C.B.C., 110' S. of the SE Cor., SE 1/4, Sec. 22, Twp. 26-S, R-1-E.  
Elev. = 1359.54 (NGVD29)



Scale: 1" = 40' Horizontal  
1" = 5' Vertical  
● = Iron



See Revised Sheet



		Falcon Falls 2nd Addition	
		<b>LINE 1</b>	
Baughman		SANITARY SEWER IMPROVEMENTS	
<small>Baughman Company, P.A. 115 Ellis St. Wichita, KS 67211 P 316.262.7271 F 316.262.0149 ENGINEERING   SURVEYING   PLANNING   LANDSCAPE ARCHITECTURE</small>			
PROJECT NUMBER 46884065	DESIGN TJW	DRAWN TJW	
REVISIONS	APPROVED AEG	DATE 10/05/05	
	SCALE Noted	SHEET 4 OF 32	
<small>F:\eng\Falcon Falls 2nd\SS\ss05.dwg</small>			<small>0508-E344</small>