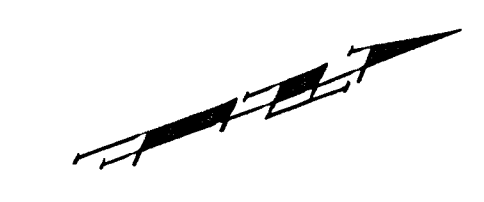
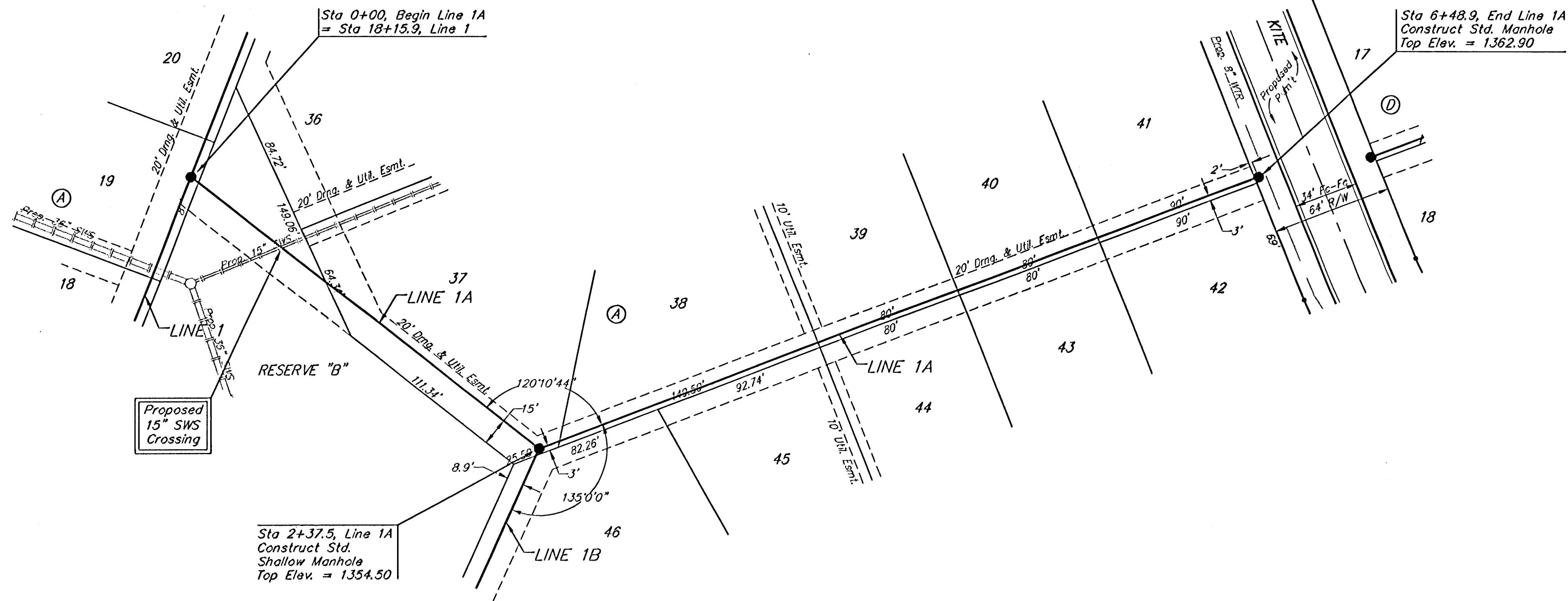


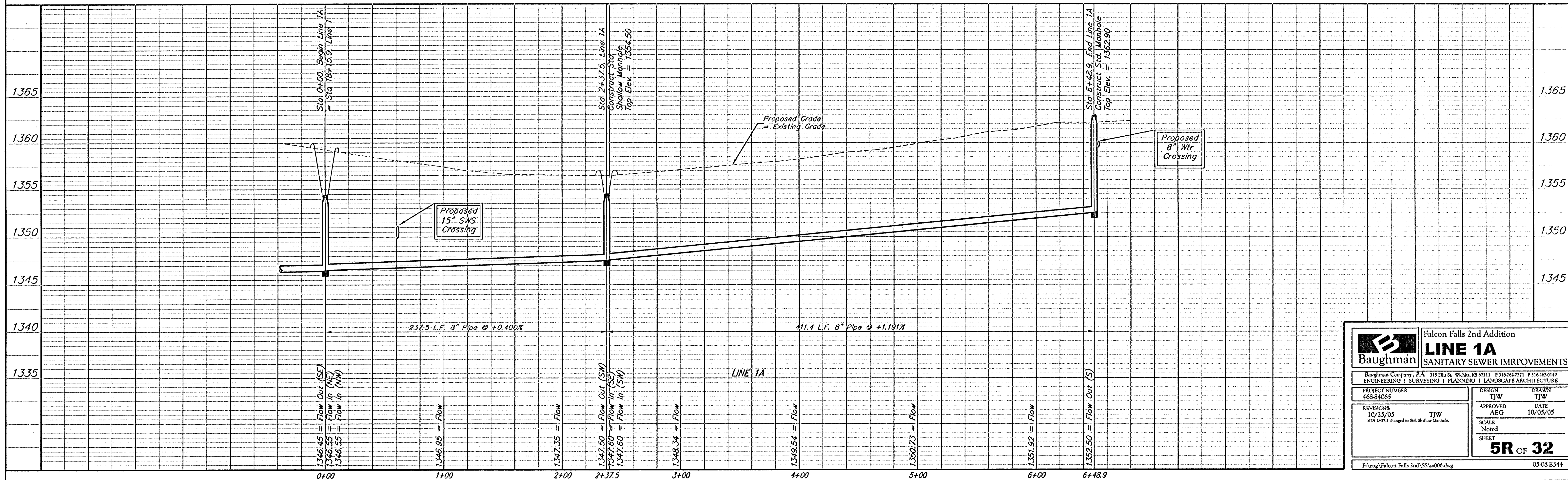
BENCHMARKS

BM #1: Brass Plate on North Hub Guard of R.C.B.C. 50' East of NW Corner NE 1/4, Sec. 22, Twp. 26-S, R-1-E.
Elev. = 1371.83 (NGVD29)

BM #2: " " cut on East Hub Guard of R.C.B.C., 110' S. of the SE Cor., SE 1/4, Sec. 22, Twp. 26-S, R-1-E.
Elev. = 1359.54 (NGVD29)



Scale: 1" = 40' Horizontal
1" = 5' Vertical
• = Iron



		Falcon Falls 2nd Addition	
		LINE 1A	
SANITARY SEWER IMPROVEMENTS		<small>Baughman Company, P.A. 315 Ellis St. Wichita, KS 67211 P 316-262-7271 F 316-262-0149 ENGINEERING SURVEYING PLANNING LANDSCAPE ARCHITECTURE</small>	
PROJECT NUMBER 468-84665	DESIGN TJW	DRAWN TJW	
REVISIONS: 10/25/05 STA 2+37.5 changed to Std. Shallow Manhole.	TJW	DATE 10/05/05	
	SCALE Noted	SHEET 5R OF 32	
F:\eng\Falcon Falls 2nd SS\ss006.dwg			0508E344