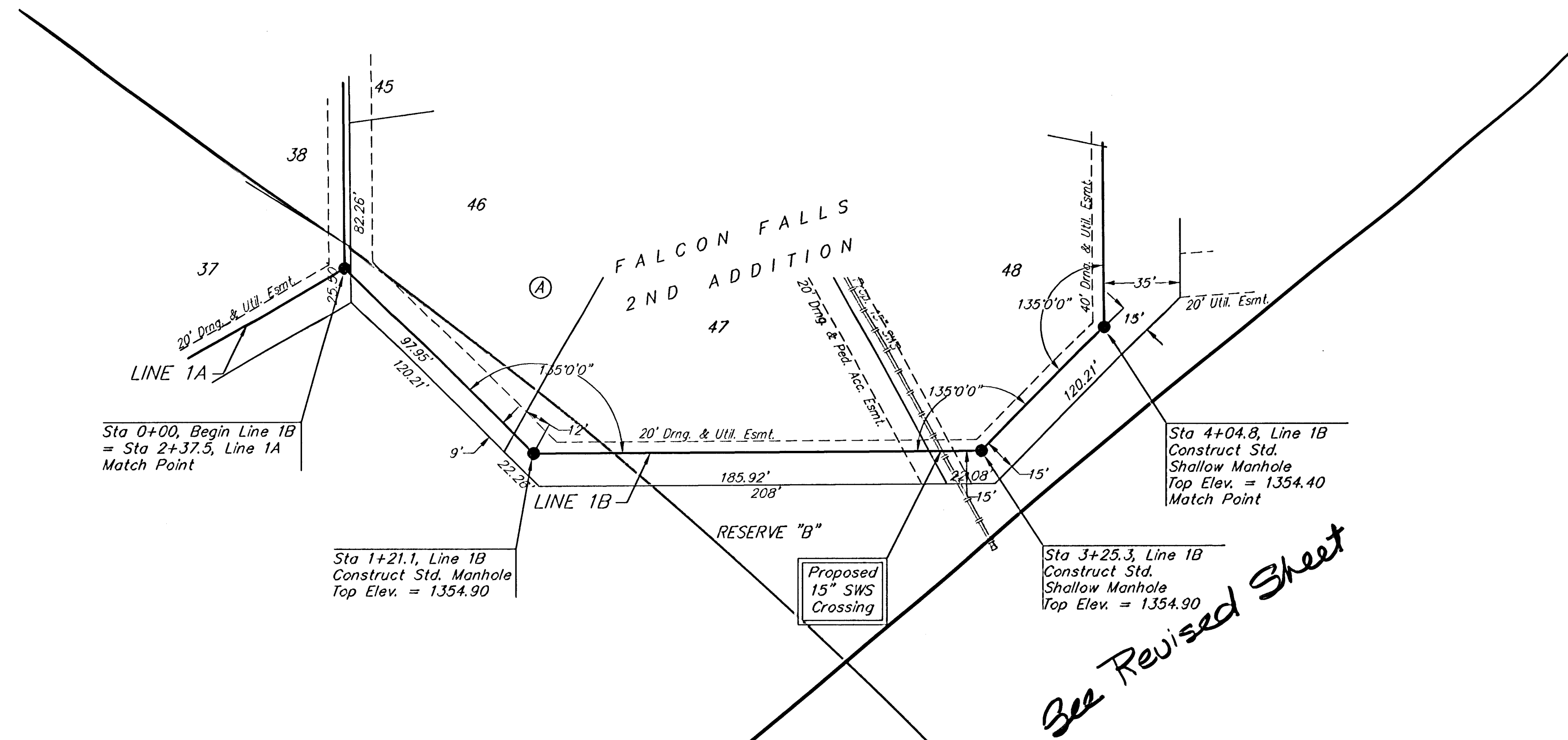
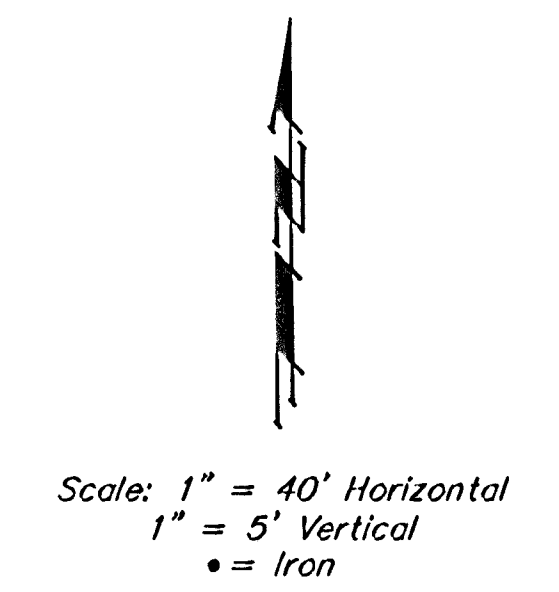


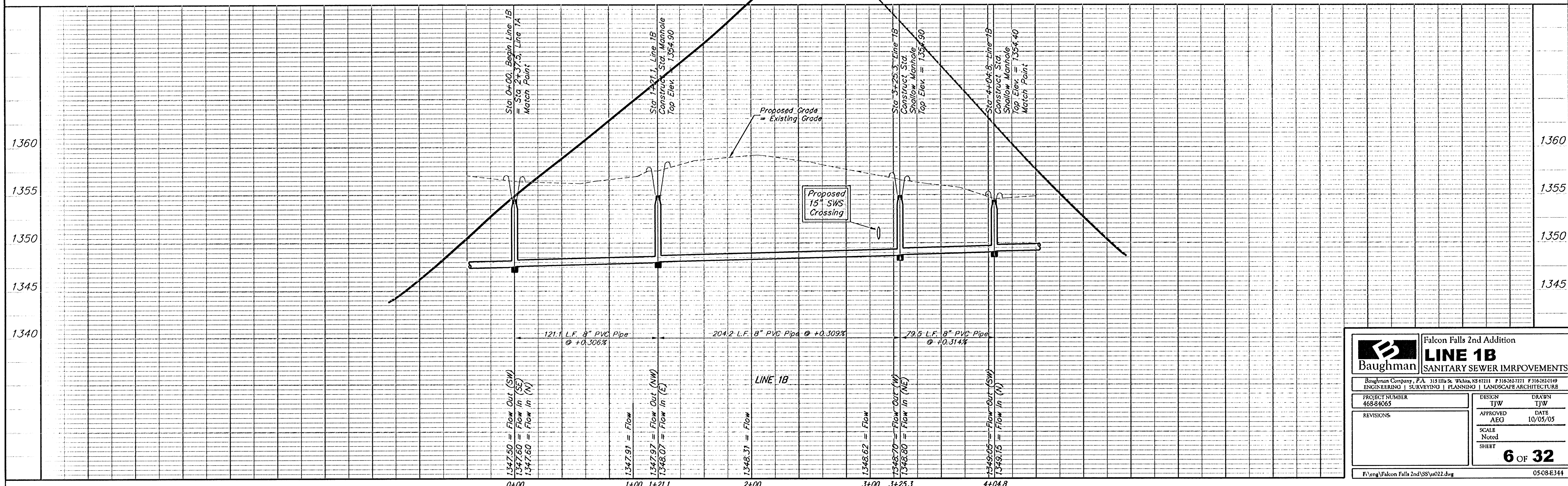
**BENCHMARKS**

BM #1: Brass Plate on North Hub Guard of R.C.B.C. 50' East of NW Corner NE 1/2, Sec. 22, Twp. 26-S, R-1-E.  
Elev. = 1371.83 (NGVD29)

BM #2: "□" cut on East Hub Guard of R.C.B.C., 110' S. of the SE Cor., SE 1/4, Sec. 22, Twp. 26-S, R-1-E.  
Elev. = 1359.54 (NGVD29)



*See Revised Sheet*



		Falcon Falls 2nd Addition	
		<b>LINE 1B</b>	
SANITARY SEWER IMPROVEMENTS			
<small>Baughman Company, P.A. 315 Ellis St. Wichita, KS 67211 F 316262721 F 316262049 ENGINEERING   SURVEYING   PLANNING   LANDSCAPE ARCHITECTURE</small>			
PROJECT NUMBER 46844065	DESIGN TJW	DRAWN TJW	
REVISIONS:	APPROVED AEG	DATE 10/05/05	
	SCALE Noted	SHEET	
			<b>6 OF 32</b>
<small>F:\eng\Falcon Falls 2nd\SS\ss022.dwg</small>			<small>0508.E344</small>