

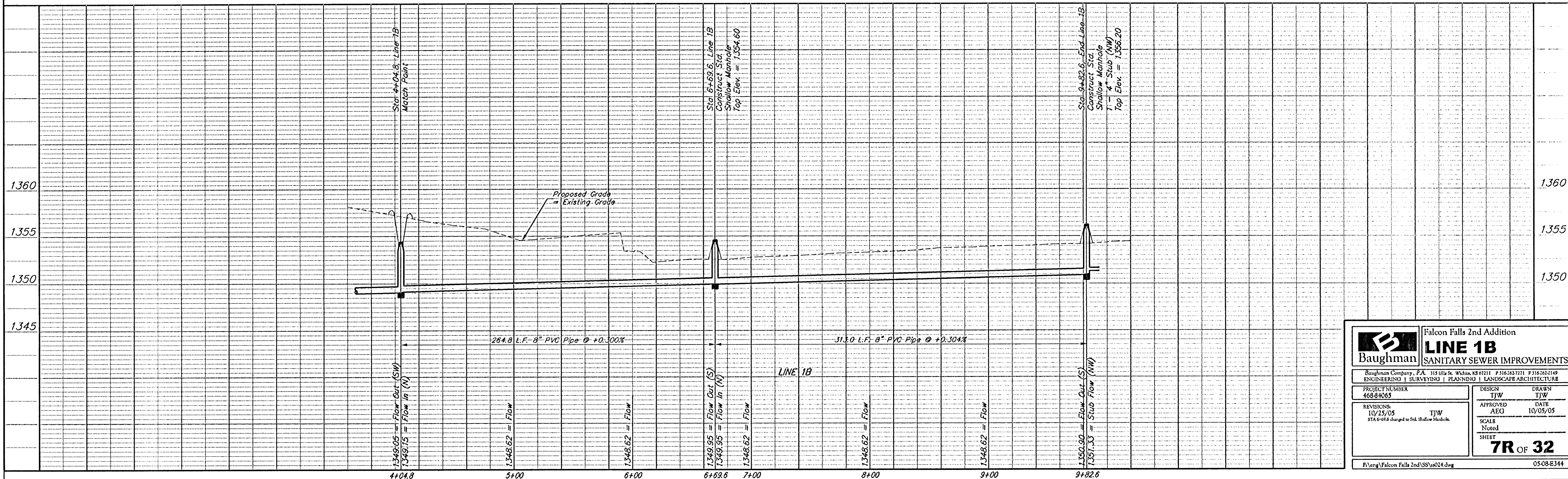
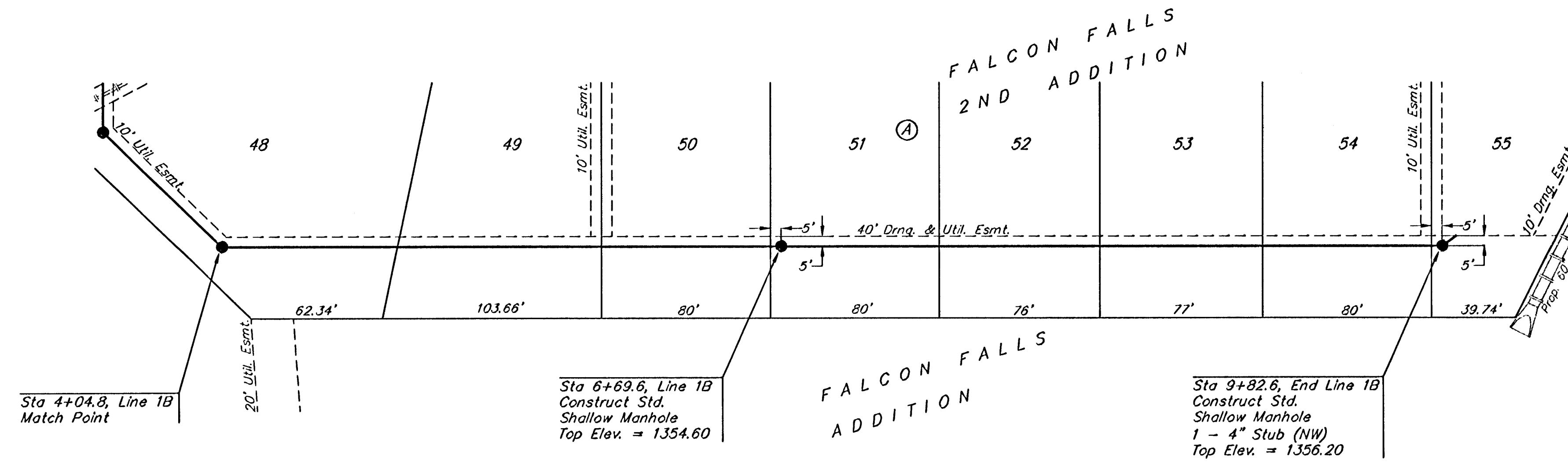
**BENCHMARKS**

BM #1: Brass Plate on North Hub Guard of R.C.B.C. 50' East of NW Corner NE 1/2, Sec. 22, Twp. 26-S, R-1-E.  
Elev. = 1371.83 (NGVD29)

BM #2: "X" cut on East Hub Guard of R.C.B.C., 110' S. of the SE Cor., SE 1/4, Sec. 22, Twp. 26-S, R-1-E.  
Elev. = 1359.54 (NGVD29)



Scale: 1" = 40' Horizontal  
1" = 5' Vertical  
• = Iron



		<b>Falcon Falls 2nd Addition</b> <b>LINE 1B</b> <b>SANITARY SEWER IMPROVEMENTS</b>	
		<small>Baughman Company, P.A. 315 Ella St. Wichita, KS 67211 P 316-263-7271 F 316-262-0149          ENGINEERING   SURVEYING   PLANNING   LANDSCAPE ARCHITECTURE</small>	
PROJECT NUMBER 468-8465	DESIGN TJW	DRAWN TJW	APPROVED AEG
REVISIONS 10/25/05 STA 6+69.6 changed to Std. Shallow Manhole.	DATE 10/05/05	SCALE Noted	SHEET <b>7R OF 32</b>
<small>F:\eng\Falcon Falls 2nd\SS\ss024.dwg</small>			<small>0508-E344</small>