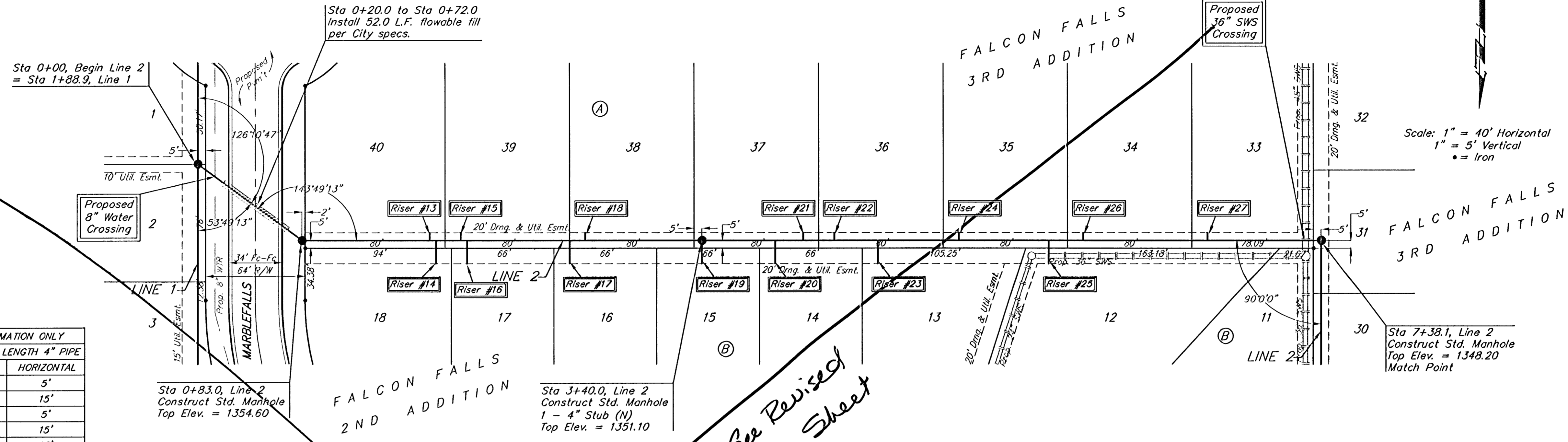


**BENCHMARKS**

BM #1: Brass Plate on North Hub Guard of R.C.B.C. 50' East of NW Corner NE 1/2, Sec. 22, Twp. 26-S, R-1-E.  
Elev. = 1371.83 (NGVD29)

BM #2: "□" cut on East Hub Guard of R.C.B.C., 110' S. of the SE Cor., SE 1/4, Sec. 22, Twp. 26-S, R-1-E.  
Elev. = 1359.54 (NGVD29)



**SEWER SERVICE TABLE**

NUMBER	TYPE	LOCATION			FOR INFORMATION ONLY		
		LOT NO.	BLOCK NO.	LINE NO.	STATION \ DIRECTION	APPROXIMATE LENGTH 4" PIPE VERTICAL	HORIZONTAL
13	10" x 4" Tee Saddle	40	A	2	1+65/Lt.	16.5'	5'
14	10" x 4" Tee Saddle	18	B	2	1+69/Rt.	16.5'	15'
15	10" x 4" Tee Saddle	39	A	2	1+85/Lt.	16.5'	5'
16	10" x 4" Tee Saddle	17	B	2	1+89/Rt.	16.5'	15'
17	10" x 4" Tee Saddle	16	B	2	2+55/Rt.	16.0'	15'
18	10" x 4" Tee Saddle	38	A	2	2+65/Lt.	16.0'	5'
19	4" x 4" Tee Saddle	15	B	2	3+40/Rt.	15.0'	15'
20	10" x 4" Tee Saddle	14	B	2	3+87/Rt.	14.5'	15'
21	10" x 4" Tee Saddle	37	A	2	4+05/Lt.	14.0'	5'

NOTE: Vertical Riser Pipe shall be extended to 2' minimum above ground water elevation and 4' maximum below proposed ground elevation.

**SEWER SERVICE TABLE**

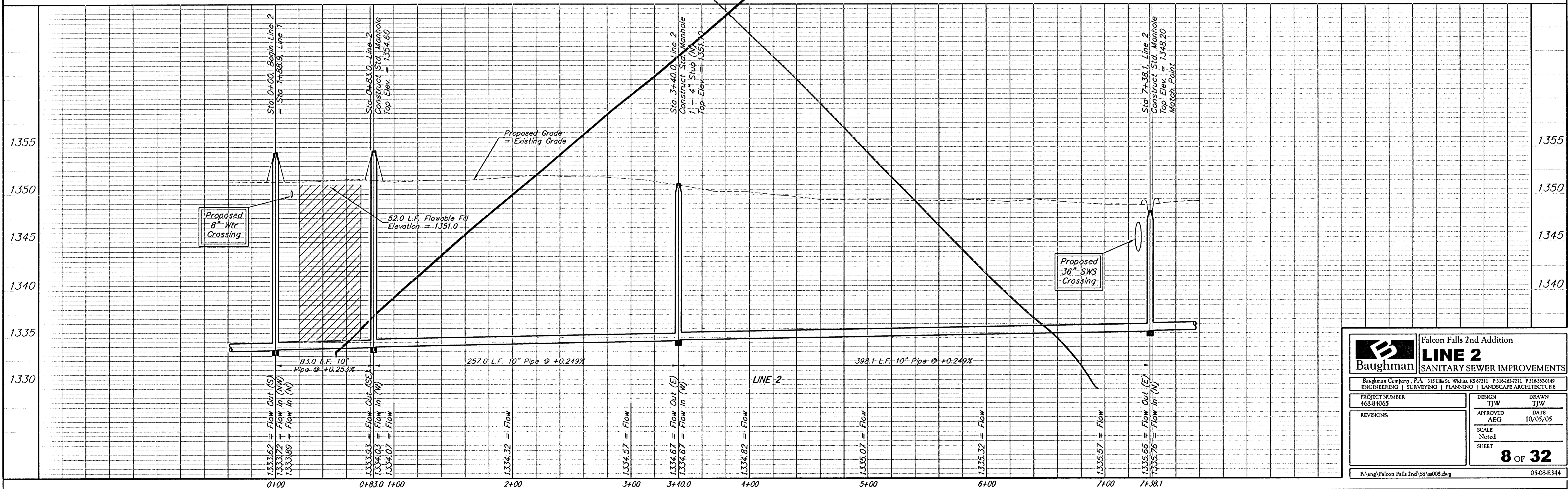
NUMBER	TYPE	LOCATION			FOR INFORMATION ONLY		
		LOT NO.	BLOCK NO.	LINE NO.	STATION \ DIRECTION	APPROXIMATE LENGTH 4" PIPE VERTICAL	HORIZONTAL
22	10" x 4" Tee Saddle	36	A	2	4+25/Lt.	13.5'	5'
23	10" x 4" Tee Saddle	13	B	2	4+53/Rt.	13.0'	15'
24	10" x 4" Tee Saddle	35	A	2	6+05/Lt.	16.0'	5'

NOTE: Vertical Riser Pipe shall be extended to 2' minimum above ground water elevation and 4' maximum below proposed ground elevation.

**SEWER SERVICE TABLE**

NUMBER	TYPE	LOCATION			FOR INFORMATION ONLY		
		LOT NO.	BLOCK NO.	LINE NO.	STATION \ DIRECTION	APPROXIMATE LENGTH 4" PIPE VERTICAL	HORIZONTAL
25	10" x 4" Tee Saddle	12	B	2	5+63/Rt.	12.5'	15'
26	10" x 4" Tee Saddle	34	A	2	5+85/Lt.	12.5'	5'
27	10" x 4" Tee Saddle	33	A	2	6+65/Lt.	12.5'	5'

NOTE: Vertical Riser Pipe shall be extended to 2' minimum above ground water elevation and 4' maximum below proposed ground elevation.



		Falcon Falls 2nd Addition	
		<b>LINE 2</b>	
Baughman Company, P.A. 315 Ellis St. Wichita, KS 67211 P 316-262-7271 F 316-262-0149 ENGINEERING   SURVEYING   PLANNING   LANDSCAPE ARCHITECTURE		DESIGN	DRAWN
PROJECT NUMBER	468-94065	AEG	ITJW
REVISIONS:		DATE	10/05/05
		SCALE	Noted
		SHEET	8 OF 32
F:\eng\Falcon Falls 2nd\SS\ss008.dwg		05-08-E344	