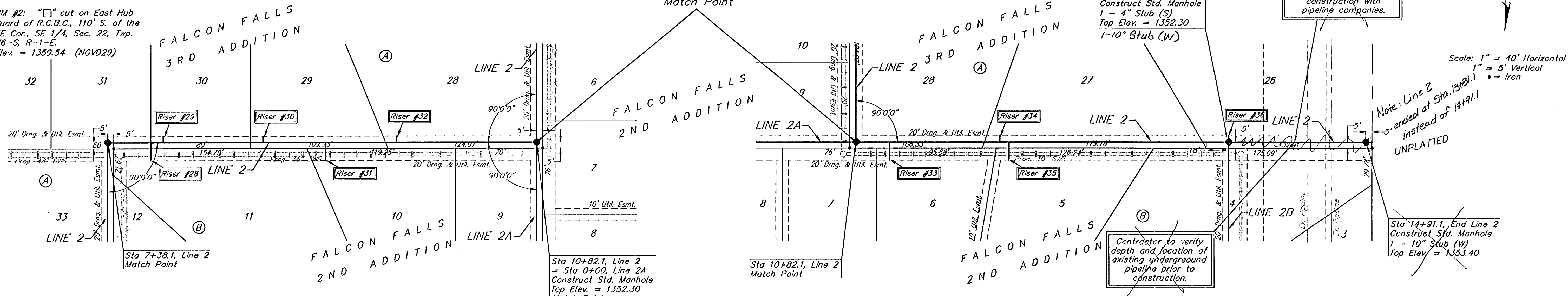


BENCHMARKS

BM #1: Brass Plate on North Hub Guard of R.C.B.C., 50' East of NW Corner NE 1/4, Sec. 22, Twp. 26-S, R-1-E. Elev. = 1371.83 (NGVD29)

BM #2: "X" cut on East Hub Guard of R.C.B.C., 110' S. of the SE Cor., SE 1/4, Sec. 22, Twp. 26-S, R-1-E. Elev. = 1359.54 (NGVD29)



SEWER SERVICE TABLE

NUMBER	TYPE	LOCATION				FOR INFORMATION ONLY	
		LOT NO.	BLOCK NO.	LINE NO.	STATION DIRECTION	APPROXIMATE LENGTH 4" PIPE VERTICAL	HORIZONTAL
28	10" x 4" Tee Saddle	11	B	2	7+73/Rt.	10.5'	15'
29	10" x 4" Tee Saddle	30	A	2	7+83/Lt.	10.5'	5'
30	10" x 4" Tee Saddle	29	A	2	8+63/Lt.	11.0'	5'

NOTE: Vertical Riser Pipe shall be extended to 2' minimum above ground water elevation and 4' maximum below proposed ground elevation.

SEWER SERVICE TABLE

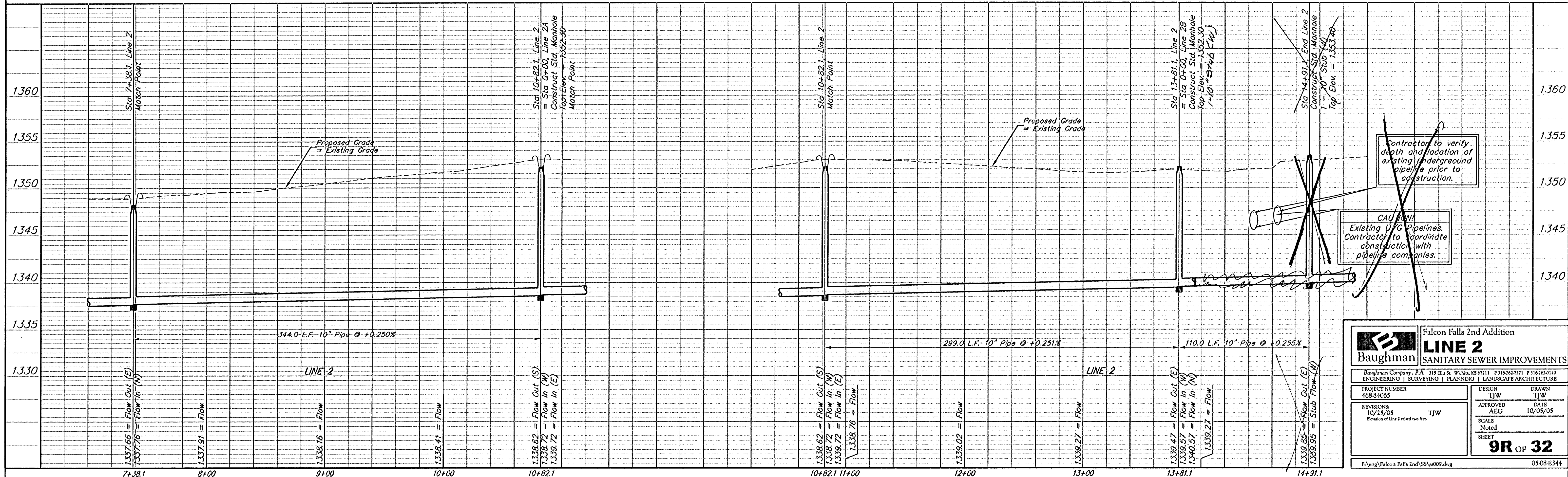
NUMBER	TYPE	LOCATION				FOR INFORMATION ONLY	
		LOT NO.	BLOCK NO.	LINE NO.	STATION DIRECTION	APPROXIMATE LENGTH 4" PIPE VERTICAL	HORIZONTAL
31	10" x 4" Tee Saddle	10	B	2	9+13/Rt.	11.5'	15'
32	10" x 4" Tee Saddle	28	A	2	9+70/Lt.	12.5'	5'
33	10" x 4" Tee Saddle	6	B	2	11+09/Rt.	13.0'	15'

NOTE: Vertical Riser Pipe shall be extended to 2' minimum above ground water elevation and 4' maximum below proposed ground elevation.

SEWER SERVICE TABLE

NUMBER	TYPE	LOCATION				FOR INFORMATION ONLY	
		LOT NO.	BLOCK NO.	LINE NO.	STATION DIRECTION	APPROXIMATE LENGTH 4" PIPE VERTICAL	HORIZONTAL
34	10" x 4" Tee Saddle	27	A	2	11+97/Lt.	12.5'	5'
35	10" x 4" Tee Saddle	5	B	2	12+05/Rt.	12.5'	15'
36	10" x 4" Tee Saddle	26	A	2	13+81/Lt.	13.0'	5'

NOTE: Vertical Riser Pipe shall be extended to 2' minimum above ground water elevation and 4' maximum below proposed ground elevation.



Baughman Falcon Falls 2nd Addition
LINE 2
 SANITARY SEWER IMPROVEMENTS

Baughman Company, P.A. 315 Ella St., Wichita, KS 67211 P: 316-262-7771 F: 316-262-0149
 ENGINEERING | SURVEYING | PLANNING | LANDSCAPE ARCHITECTURE

PROJECT NUMBER: 468-8465 DESIGN: TJW DRAWN: TJW
 APPROVED: AEG DATE: 10/05/05

REVISIONS: 10/15/05 TJW SCALE: Noted
 Elevation of Line 2 ruled two feet.

9R OF 32

F:\eng\Falcon Falls 2nd\SS\ss009.dwg 05/08/E344