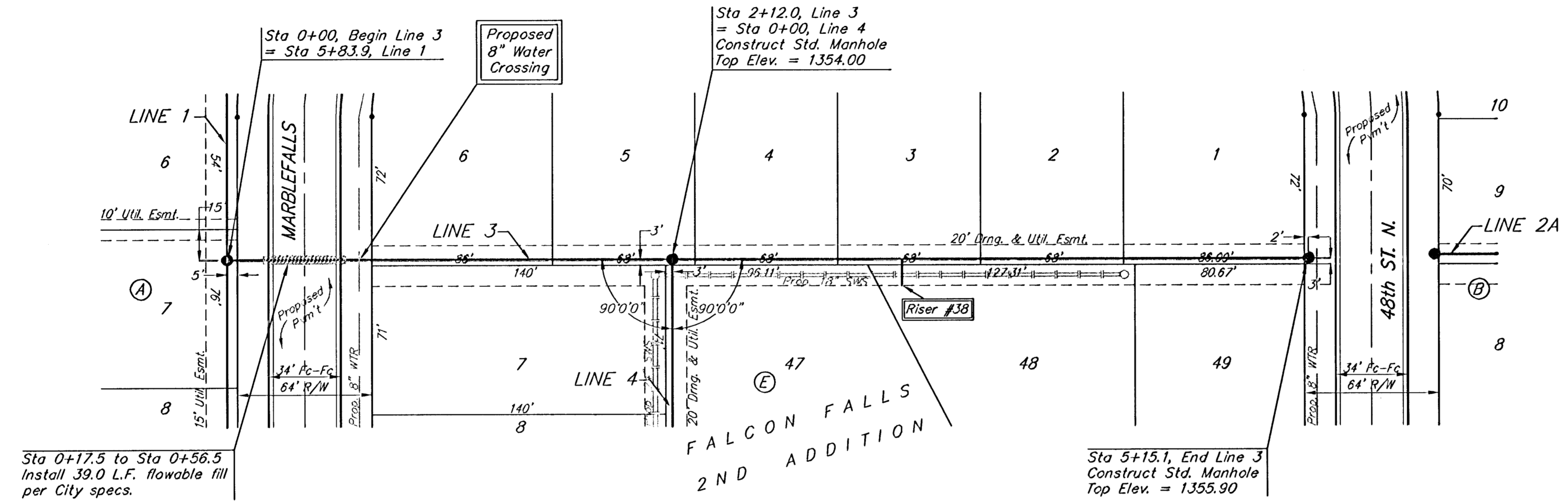
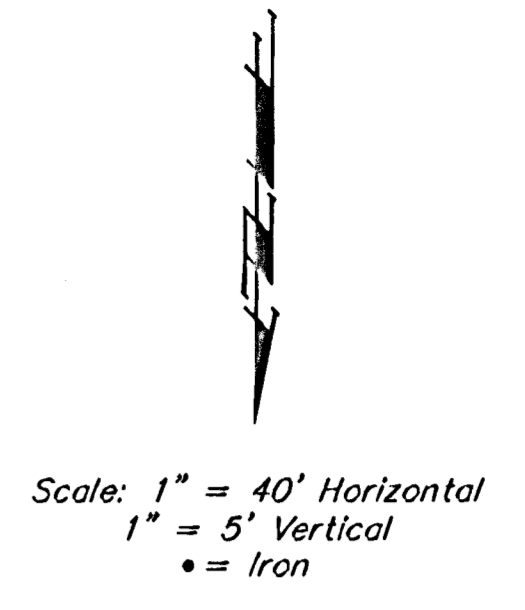


BENCHMARKS

BM #1: Brass Plate on North Hub Guard of R.C.B.C. 50' East of NW Corner NE 1/2, Sec. 22, Twp. 26-S, R-1-E.
Elev. = 1371.83 (NGVD29)

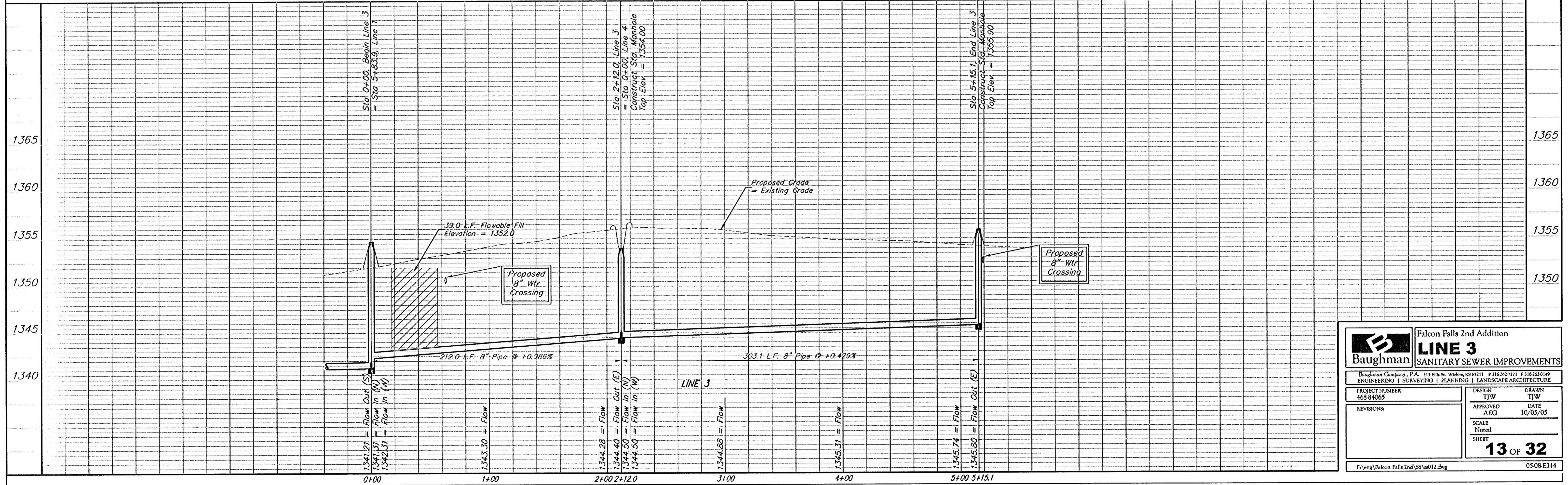
BM #2: "x" cut on East Hub Guard of R.C.B.C., 110' S. of the SE Cor., SE 1/4, Sec. 22, Twp. 26-S, R-1-E.
Elev. = 1359.54 (NGVD29)



SEWER SERVICE TABLE

NUMBER	TYPE	LOCATION				FOR INFORMATION ONLY	
		LOT NO.	BLOCK NO.	LINE NO.	STATION DIRECTION	APPROXIMATE LENGTH 4" PIPE VERTICAL	HORIZONTAL
38	8" x 4" Tee Saddle	48	E	3	3+22/Rt.	7.5'	15'

NOTE: Vertical Riser Pipe shall be extended to 2' minimum above ground water elevation and 4' maximum below proposed ground elevation.



Baughman Falcon Falls 2nd Addition
LINE 3
SANITARY SEWER IMPROVEMENTS

Baughman Company, P.A. 315 6th St., W. John, KS 67111 F 316-263-7111 F 316-263-0149
ENGINEERING | SURVEYING | PLANNING | LANDSCAPE ARCHITECTURE

PROJECT NUMBER 468-84065	DESIGN TJW	DRAWN TJW
APPROVED AEG	DATE 10/05/05	
REVISIONS	SCALE Noted	SHEET 13 OF 32

F:\eng\Falcon Falls 2nd/SS\ss012.dwg 05-08-E314