

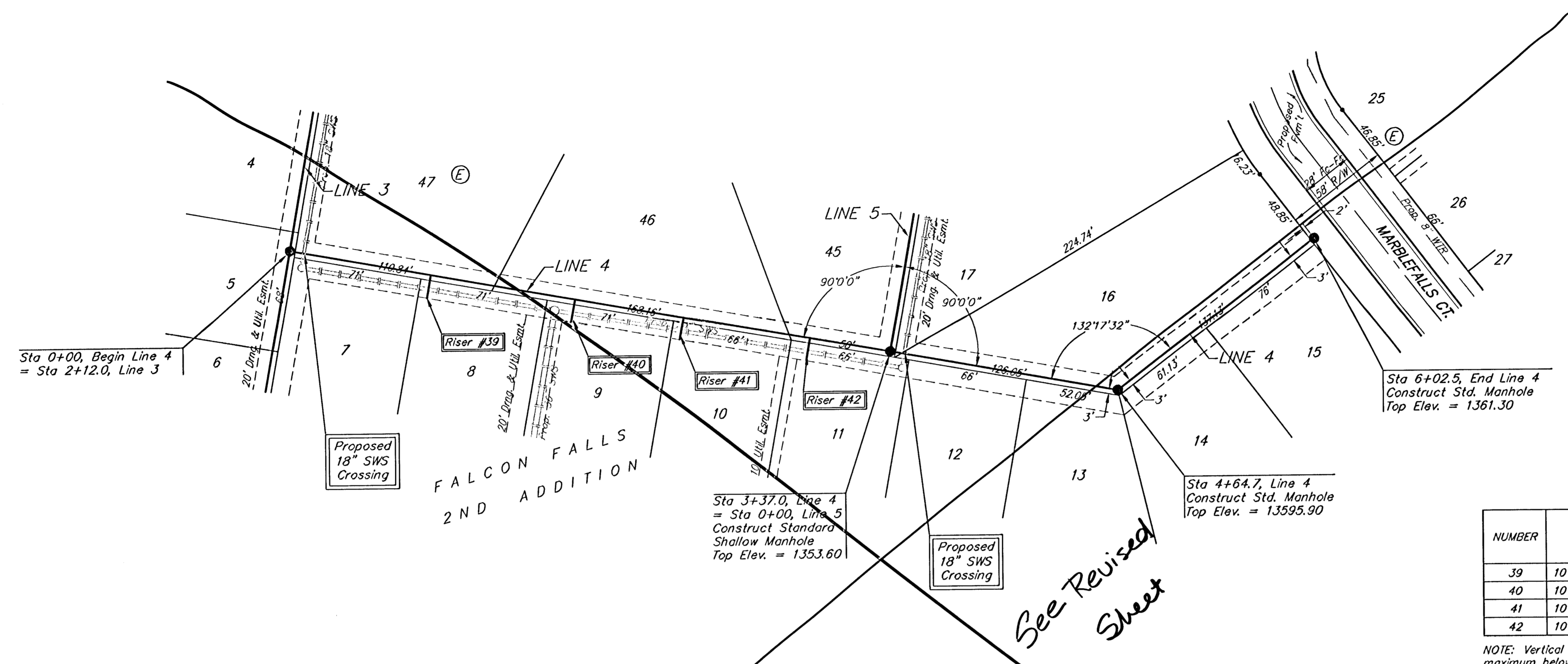
**BENCHMARKS**

BM #1: Brass Plate on North Hub Guard of R.C.B.C. 50' East of NW Corner NE 1/2, Sec. 22, Twp. 26-S, R-1-E.  
Elev. = 1371.83 (NGVD29)

BM #2: "□" cut on East Hub Guard of R.C.B.C., 110' S. of the SE Cor., SE 1/4, Sec. 22, Twp. 26-S, R-1-E.  
Elev. = 1359.54 (NGVD29)



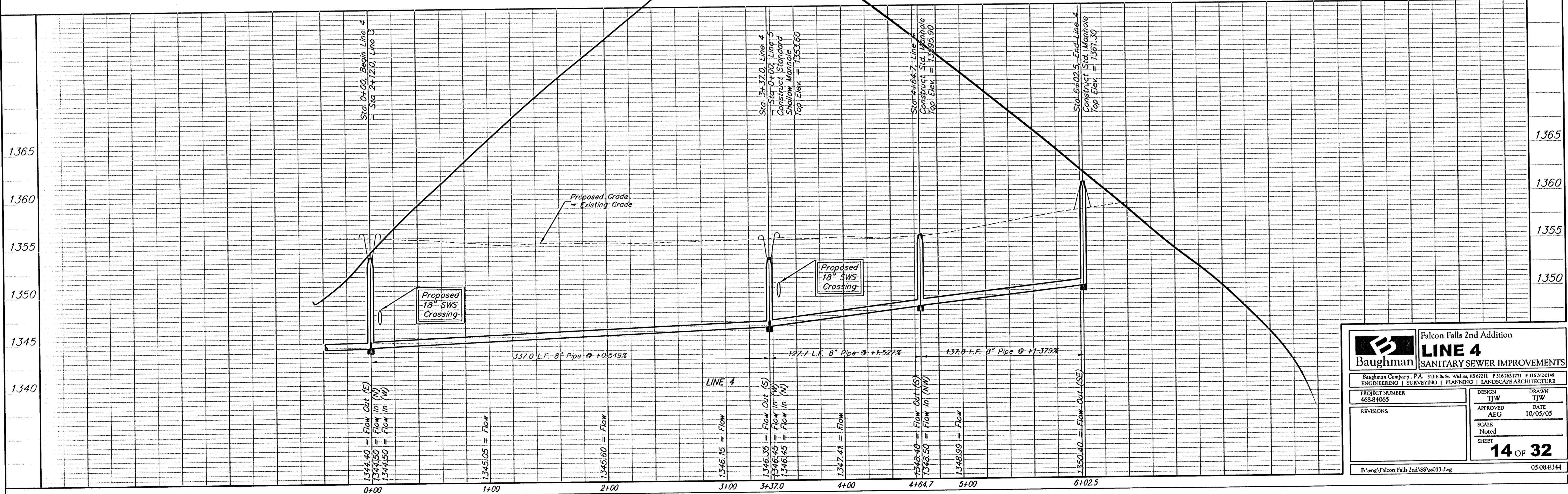
Scale: 1" = 40' Horizontal  
1" = 5' Vertical  
• = Iron



**SEWER SERVICE TABLE**

NUMBER	TYPE	LOCATION				FOR INFORMATION ONLY	
		LOT NO.	BLOCK NO.	LINE NO.	STATION \ DIRECTION	APPROXIMATE LENGTH 4" PIPE	
						VERTICAL	HORIZONTAL
39	10" x 4" Tee Saddle	8	E	4	0+79/Rt.	5.0'	13'
40	10" x 4" Tee Saddle	9	E	4	1+60/Rt.	5.0'	13'
41	10" x 4" Tee Saddle	10	E	4	2+21/Rt.	5.0'	13'
42	10" x 4" Tee Saddle	11	E	4	2+92/Rt.	5.0'	13'

NOTE: Vertical Riser Pipe shall be extended to 2' minimum above ground water elevation and 4' maximum below proposed ground elevation.



**Falcon Falls 2nd Addition**

**LINE 4**

**SANITARY SEWER IMPROVEMENTS**

Baughman Company, P.A. 315 Ellis St. Wichita, KS 67211 P 316-262-7711 F 316-262-0149  
ENGINEERING | SURVEYING | PLANNING | LANDSCAPE ARCHITECTURE

PROJECT NUMBER 468-04065	DESIGN TIW	DRAWN TIW
REVISIONS:	APPROVED AEG	DATE 10/05/05
SCALE Noted		SHEET <b>14 OF 32</b>

F:\eng\Falcon Falls 2nd SSW\013.dwg 0508E344