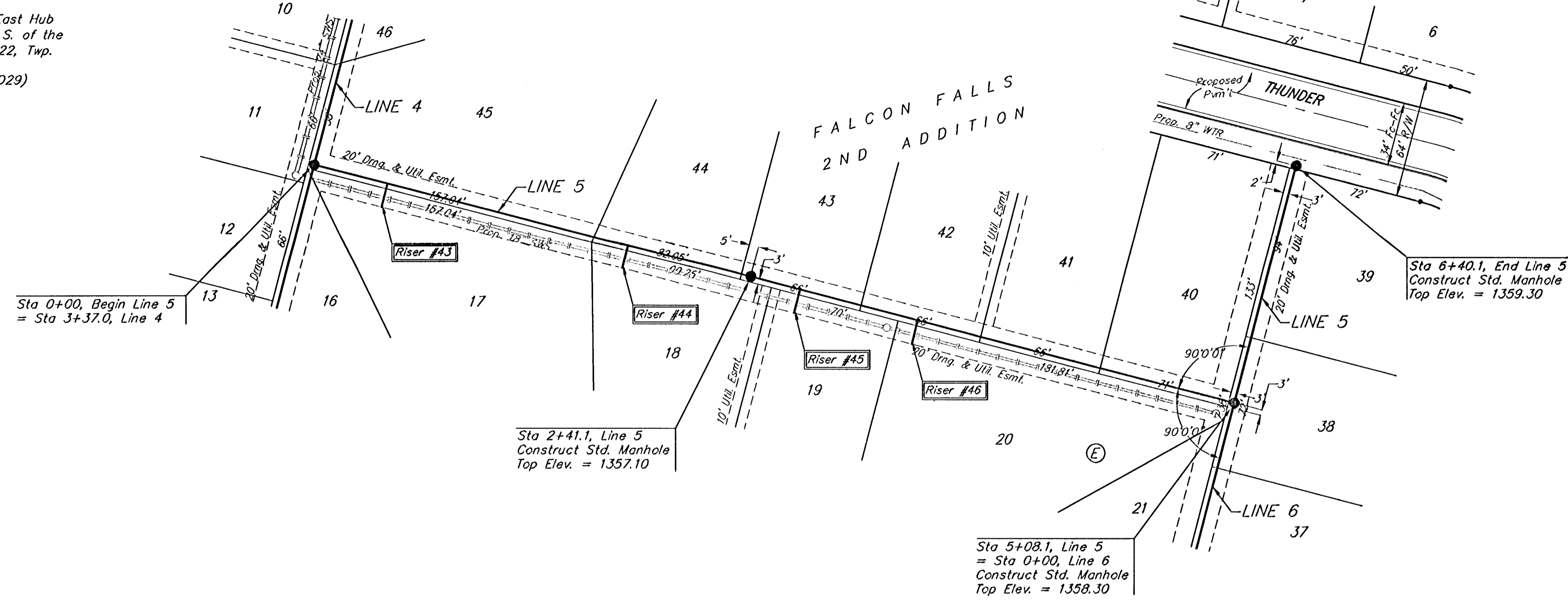


BENCHMARKS

BM #1: Brass Plate on North Hub Guard of R.C.B.C. 50' East of NW Corner NE 1/2, Sec. 22, Twp. 26-S, R-1-E.
Elev. = 1371.83 (NGVD29)

BM #2: "□" cut on East Hub Guard of R.C.B.C., 110' S. of the SE Cor., SE 1/4, Sec. 22, Twp. 26-S, R-1-E.
Elev. = 1359.54 (NGVD29)

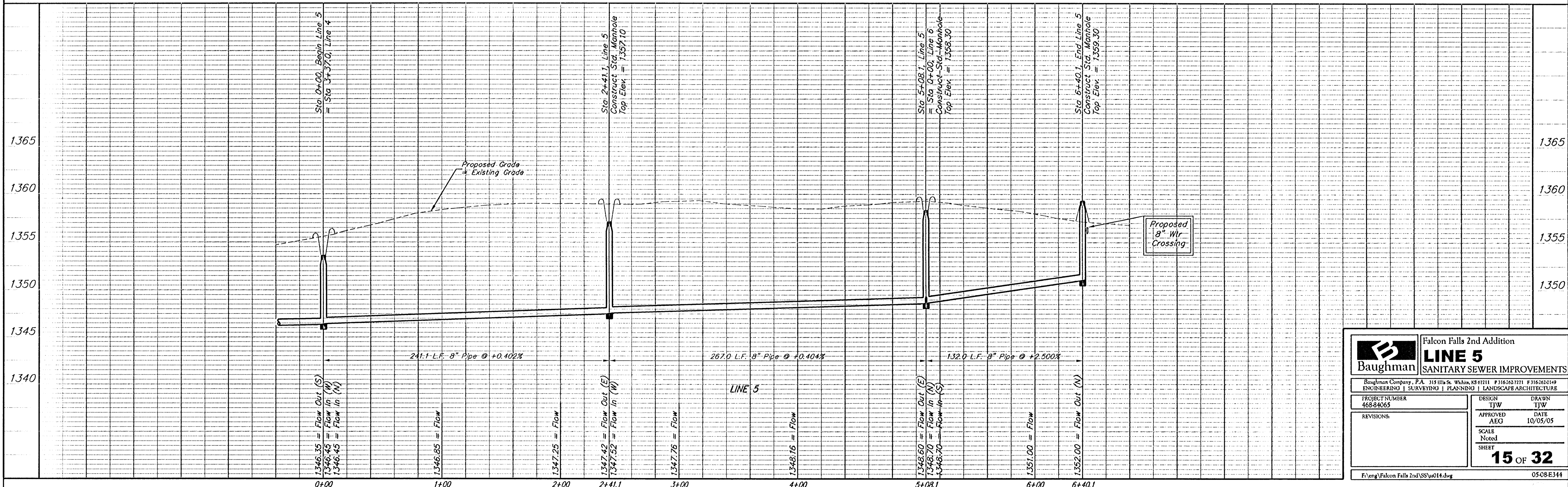


Scale: 1" = 40' Horizontal
1" = 5' Vertical
• = Iron

SEWER SERVICE TABLE

NUMBER	TYPE	LOCATION			FOR INFORMATION ONLY	
		LOT NO.	BLOCK NO.	LINE NO. STATION \ DIRECTION	APPROXIMATE LENGTH 4" PIPE VERTICAL	HORIZONTAL
43	10" x 4" Tee Saddle	17	E	5 0+40/Rt.	4.0'	13'
44	10" x 4" Tee Saddle	18	E	5 1+74/Rt.	4.5'	13'
45	10" x 4" Tee Saddle	19	E	5 2+68/Rt.	5.0'	13'
46	10" x 4" Tee Saddle	20	E	5 3+34/Rt.	5.0'	13'

NOTE: Vertical Riser Pipe shall be extended to 2' minimum above ground water elevation and 4' maximum below proposed ground elevation.



		Falcon Falls 2nd Addition	
		LINE 5	
Baughman Company, P.A. 315 Ellis St., Warren, NJ 07071 F3162431711 F3162431619 ENGINEERING SURVEYING PLANNING LANDSCAPE ARCHITECTURE		DESIGN	DRAWN
PROJECT NUMBER 468-84065		TJW	TJW
REVISIONS:		APPROVED AEG	DATE 10/05/05
		SCALE Noted	SHEET
		15 OF 32	
F:\eng\Falcon Falls 2nd\SS\ss014.dwg		0508E344	