

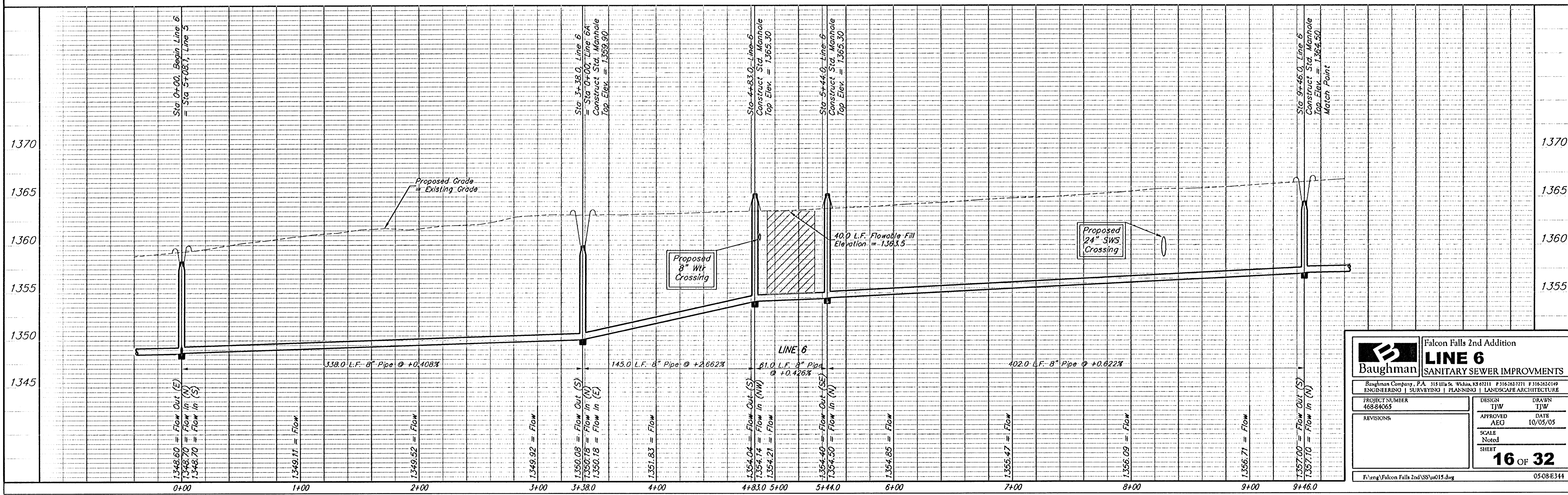
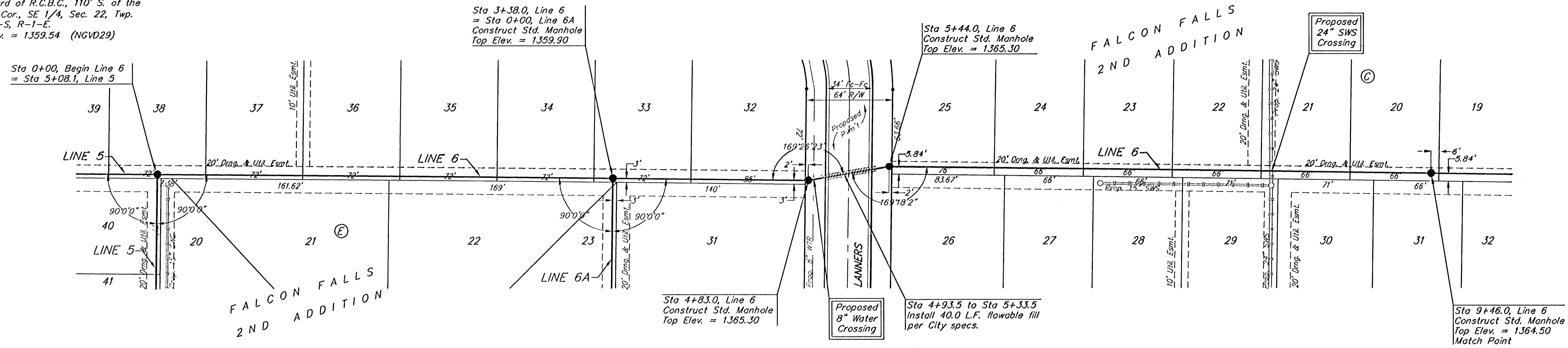
BENCHMARKS

BM #1: Brass Plate on North Hub Guard of R.C.B.C. 50' East of NW Corner NE 1/2, Sec. 22, Twp. 26-S, R-1-E. Elev. = 1371.83 (NGVD29)

BM #2: "X" cut on East Hub Guard of R.C.B.C., 110' S. of the SE Cor., SE 1/4, Sec. 22, Twp. 26-S, R-1-E. Elev. = 1359.54 (NGVD29)



Scale: 1" = 40' Horizontal
1" = 5' Vertical
• = Iron



Baughman		Falcon Falls 2nd Addition	
		LINE 6	
		SANITARY SEWER IMPROVEMENTS	
Baughman Company, P.A. 315 8th St. W. St. Louis, MO 63101 P 314.262.7171 F 314.262.1419			
ENGINEERING SURVEYING PLANNING LANDSCAPE ARCHITECTURE			
PROJECT NUMBER 468-84065	DESIGN TJW	DATE 10/05/05	DRAWN TJW
REVISIONS	APPROVED AEO	SCALE Noted	SHEET 16 OF 32
F:\eng\Falcon Falls 2nd SWS\as015.dwg			05-08-E314