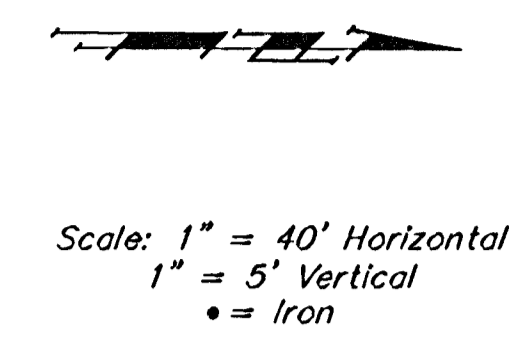
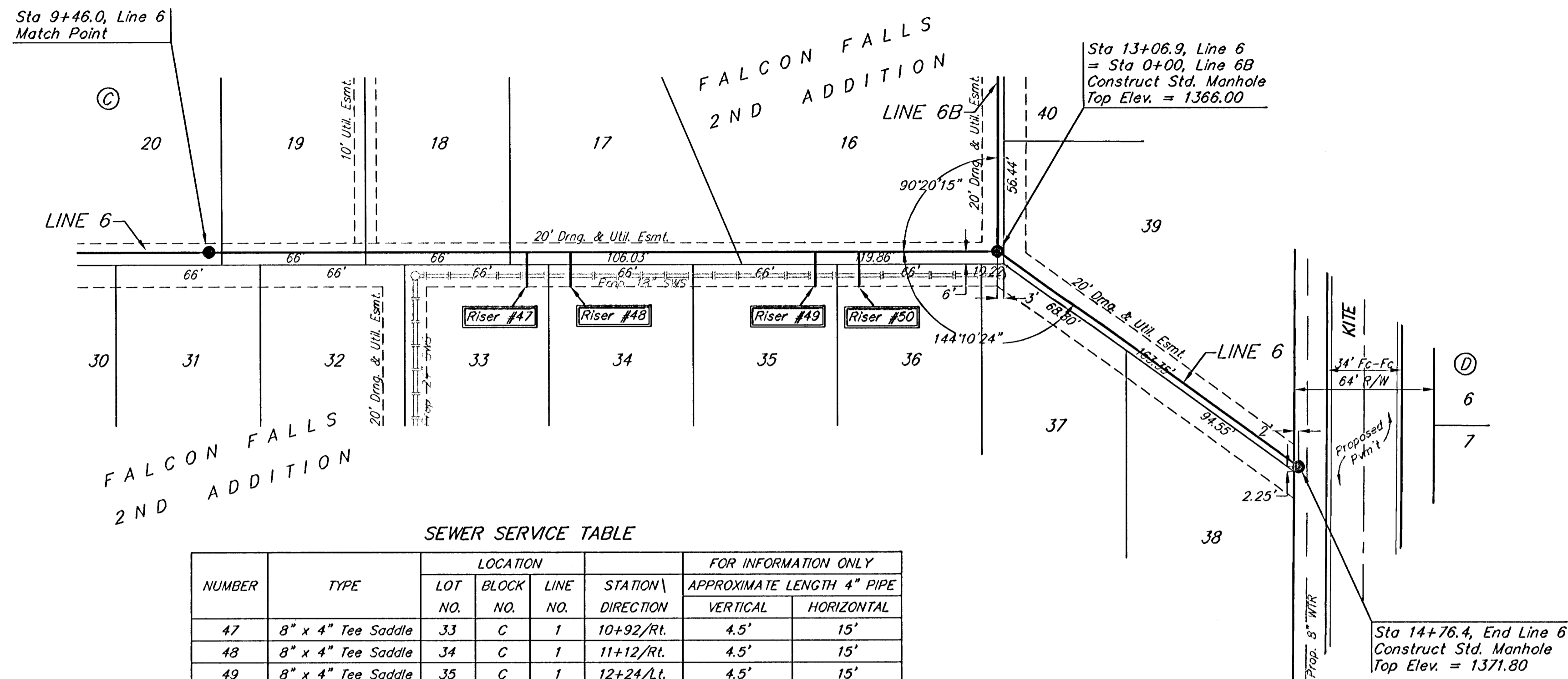


BENCHMARKS

BM #1: Brass Plate on North Hub Guard of R.C.B.C. 50' East of NW Corner NE 1/2, Sec. 22, Twp. 26-S, R-1-E.
Elev. = 1371.83 (NGVD29)

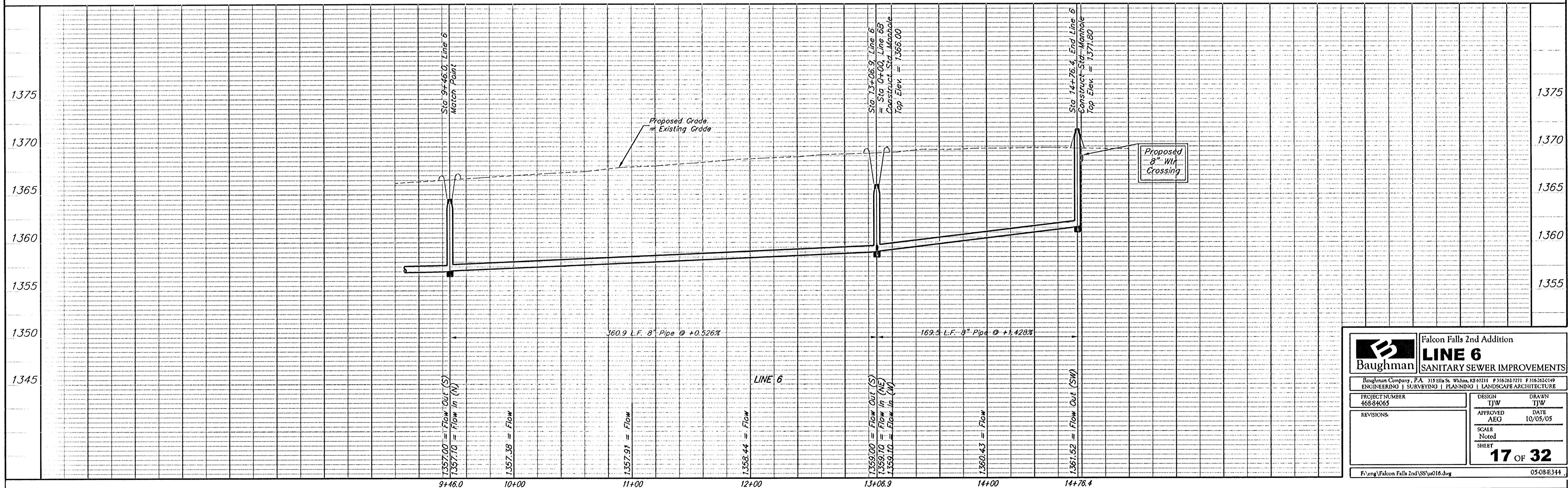
BM #2: "□" cut on East Hub Guard of R.C.B.C. 110' S. of the SE Cor., SE 1/4, Sec. 22, Twp. 26-S, R-1-E.
Elev. = 1359.54 (NGVD29)



SEWER SERVICE TABLE

NUMBER	TYPE	LOCATION				FOR INFORMATION ONLY	
		LOT NO.	BLOCK NO.	LINE NO.	STATION \ DIRECTION	APPROXIMATE LENGTH 4" PIPE VERTICAL	HORIZONTAL
47	8" x 4" Tee Saddle	33	C	1	10+92/RL	4.5'	15'
48	8" x 4" Tee Saddle	34	C	1	11+12/RL	4.5'	15'
49	8" x 4" Tee Saddle	35	C	1	12+24/LI	4.5'	15'
50	8" x 4" Tee Saddle	36	C	1	12+44/RL	4.5'	15'

NOTE: Vertical Riser Pipe shall be extended to 2' minimum above ground water elevation and 4' maximum below proposed ground elevation.



		Falcon Falls 2nd Addition LINE 6 SANITARY SEWER IMPROVEMENTS	
<small>Baughman Company, P.A. 313 E. 11th St., Wichita, KS 67211 P.316.263.7711 F.316.262.0149 ENGINEERING SURVEYING PLANNING LANDSCAPE ARCHITECTURE</small>			
PROJECT NUMBER 468-84065	DESIGN TIJW	DRAWN TIJW	APPROVED AEG
REVISIONS:	DATE 10/05/05	SCALE Noted	SHEET 17 OF 32
<small>F:\eng\Falcon Falls 2nd\SS\ss016.dwg</small>			<small>05-08-E344</small>