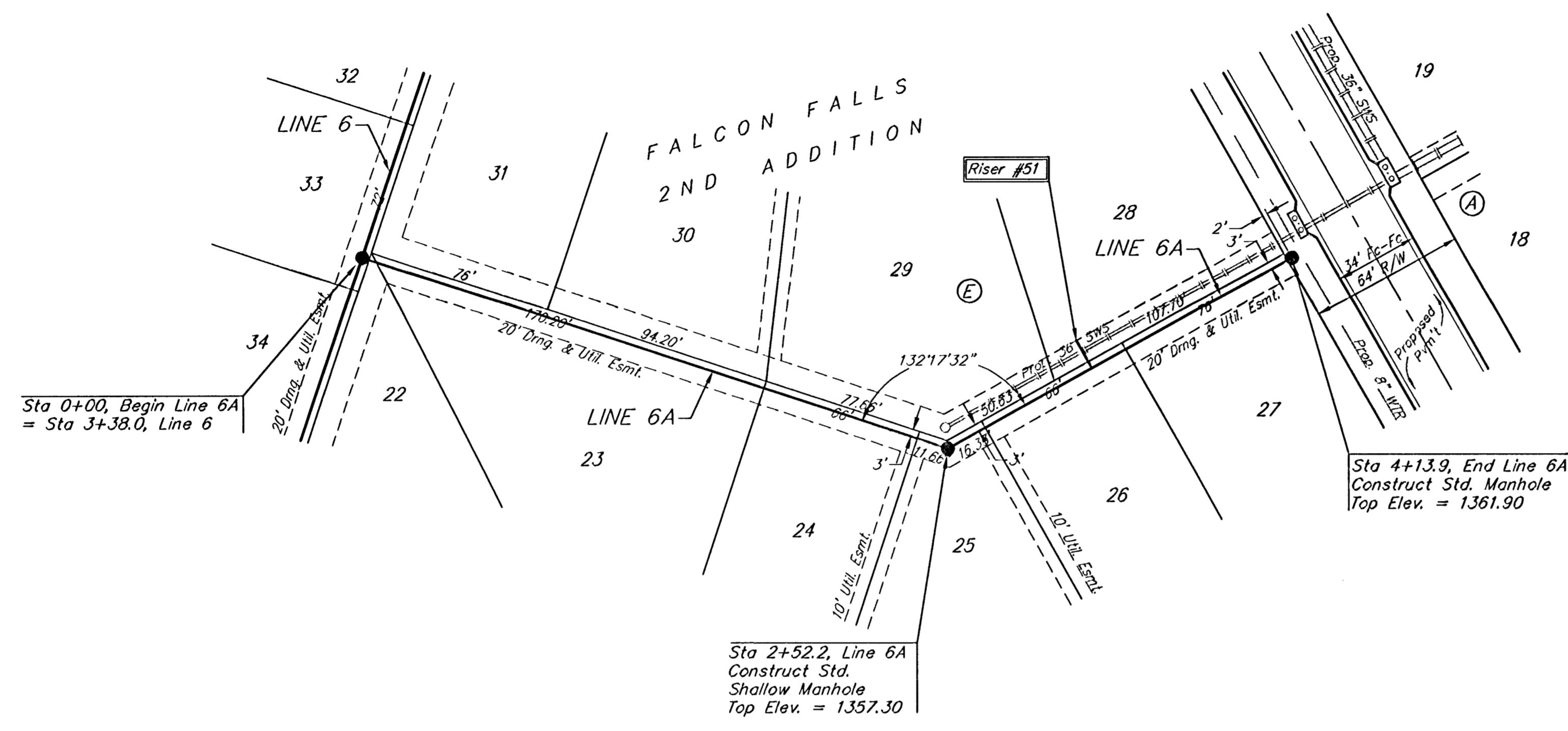
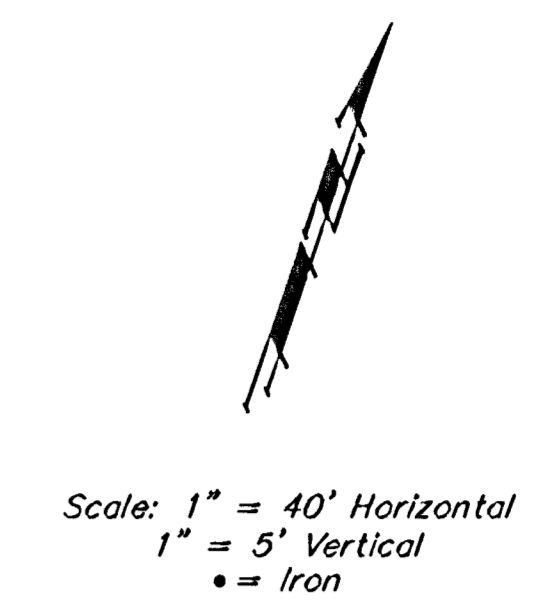


BENCHMARKS

BM #1: Brass Plate on North Hub Guard of R.C.B.C. 50' East of NW Corner NE 1/2, Sec. 22, Twp. 26-S, R-1-E.
Elev. = 1371.83 (NGVD29)

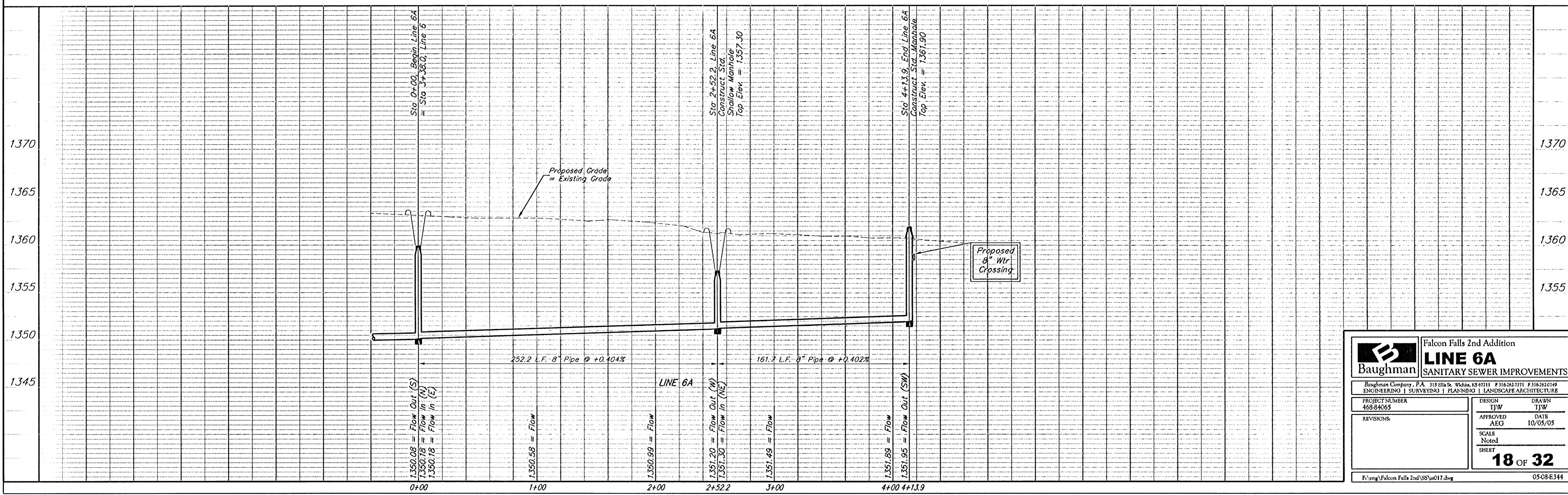
BM #2: "□" cut on East Hub Guard of R.C.B.C., 110' S. of the SE Cor., SE 1/4, Sec. 22, Twp. 26-S, R-1-E.
Elev. = 1359.54 (NGVD29)



SEWER SERVICE TABLE

| NUMBER | TYPE | LOCATION | | | FOR INFORMATION ONLY | | |
|--------|---------------------|----------|-----------|----------|----------------------|-------------------------------------|------------|
| | | LOT NO. | BLOCK NO. | LINE NO. | STATION \ DIRECTION | APPROXIMATE LENGTH 4" PIPE VERTICAL | HORIZONTAL |
| 51 | 10" x 4" Tee Saddle | 28 | E | 6A | 3+20/Lt. | 4.0' | 13' |

NOTE: Vertical Riser Pipe shall be extended to 2' minimum above ground water elevation and 4' maximum below proposed ground elevation.



| | | | |
|--------------------------------------|-----------------|--|--------------------------|
| | | Falcon Falls 2nd Addition LINE 6A SANITARY SEWER IMPROVEMENTS | |
| | | Baughman Company, P.A. 315 S. 11th St., Wichita, KS 67211 P 316-262-7271 F 316-262-0149 ENGINEERING SURVEYING PLANNING LANDSCAPE ARCHITECTURE | |
| PROJECT NUMBER 468-84065 | DESIGN TIJW | DRAWING TIJW | DATE 10/05/05 |
| REVISIONS: | APPROVED AEG | SCALE Noted | SHEET 18 OF 32 |
| F:\eng\Falcon Falls 2nd\SS\ss017.dwg | | 05-08-E344 | |