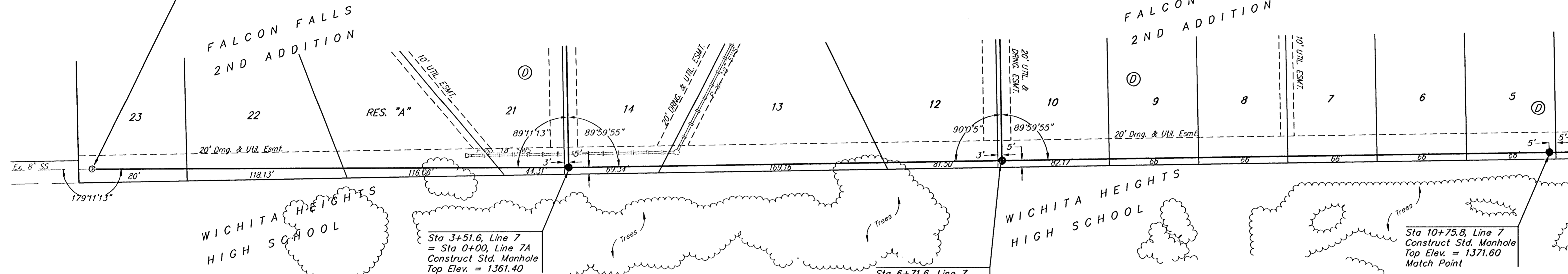


**BENCHMARKS**

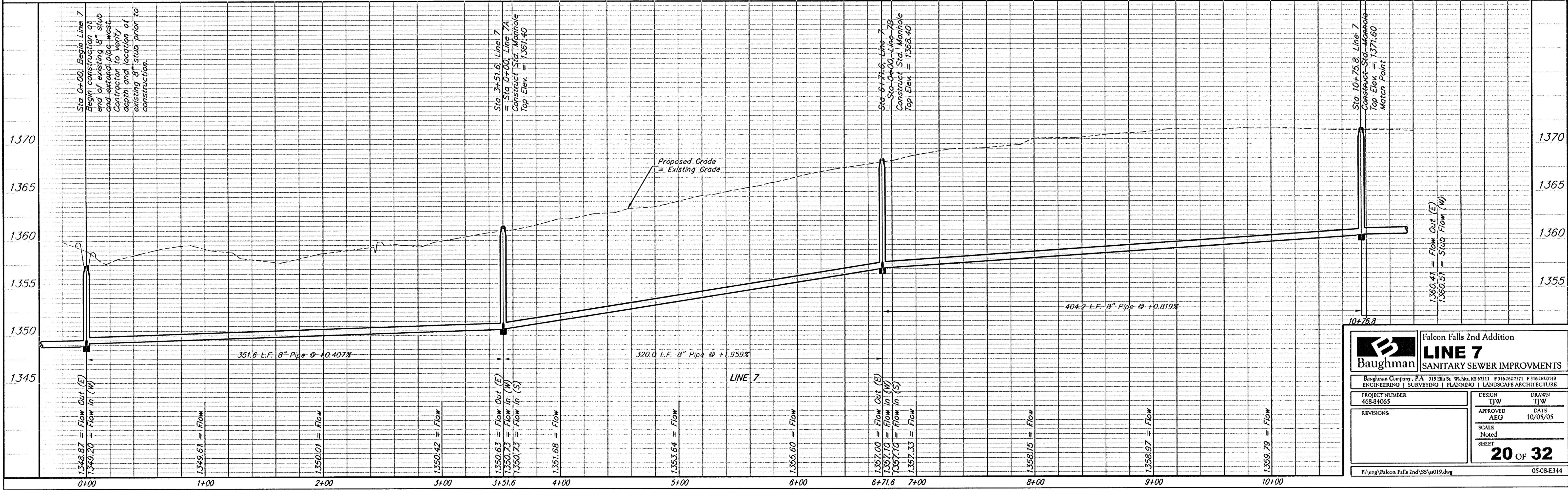
BM #1: Brass Plate on North Hub Guard of R.C.B.C. 50' East of NW Corner NE 1/2, Sec. 22, Twp. 26-S, R-1-E.  
Elev. = 1371.83 (NGVD29)

BM #2: "X" cut on East Hub Guard of R.C.B.C. 110' S. of the SE Cor., SE 1/4, Sec. 22, Twp. 26-S, R-1-E.  
Elev. = 1359.54 (NGVD29)

Sta 0+00, Begin Line 7  
Begin construction at end of existing 8" stub and extend pipe west.  
Contractor to verify depth and location of existing 8" stub prior to construction.



Remove trees only as necessary for sanitary sewer construction and only with permission of Developer or Baughman Co. Cost of removal to be incidental to lump sum bid item "Site Clearing & Restoration".



		Falcon Falls 2nd Addition	
		<b>LINE 7</b>	
Baughman Company, P.A. 313 1/2th St. Wichita, KS 67111 P 316-263-7171 F 316-263-0149		ENGINEERING   SURVEYING   PLANNING   LANDSCAPE ARCHITECTURE	
PROJECT NUMBER 468-84065	DESIGN TIJW	APPROVED AEG	DATE 10/05/05
REVISIONS:	SCALE Noted	SHEET <b>20 OF 32</b>	
F:\eng\Falcon Falls 2nd\SS\ss019.dwg		0508E344	