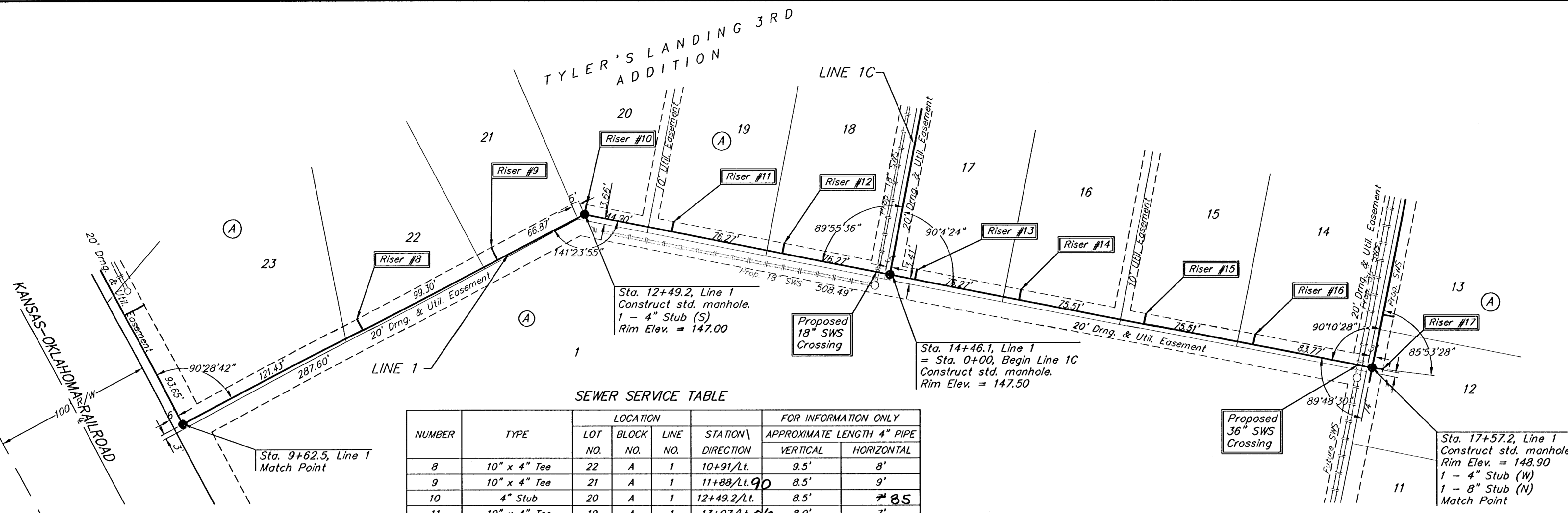


Benchmarks:
 BM #1: "X" on the West End of the Steel Casing Pipe at the Railroad Crossing South of 37th Street North Sta. 25+90, 41' Rt. Elev. = 149.18 (1336.58 MSL)
 BM #2: Steel T-Post Driven 4' Deep Sta. 18+00, 25' Rt. Elev. = 150.33 (1337.73 MSL)
 BM #3: "L" in the Concrete Footing of the SBC Pedestal in the South West Corner of 37th Street North and Tyler Road Sta. 8+56, 95' Rt. Elev. = 154.77 (1342.17 MSL)
 BM #4: Railroad Spike in the East Face of the 2nd Power Pole North of 37th Street and West of Tyler Road Sta. 94+24, 48' Lt. Elev. = 155.45 (1342.85 MSL)

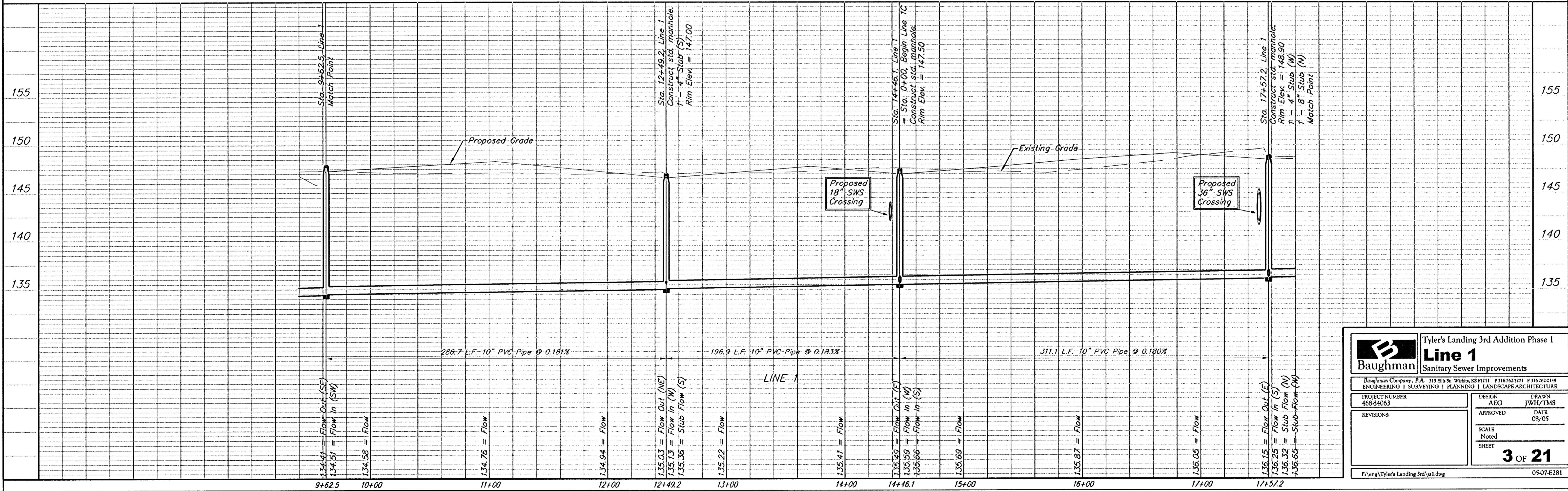


Scale: 1" = 40' Horizontal
 1" = 5' Vertical
 • = Iron

SEWER SERVICE TABLE

NUMBER	TYPE	LOCATION			FOR INFORMATION ONLY		
		LOT NO.	BLOCK NO.	LINE NO.	STATION \ DIRECTION	APPROXIMATE LENGTH 4" PIPE VERTICAL	HORIZONTAL
8	10" x 4" Tee	22	A	1	10+91/Lt.	9.5'	8'
9	10" x 4" Tee	21	A	1	11+88/Lt. 90	8.5'	9'
10	4" Stub	20	A	1	12+49.2/Lt.	8.5'	8.5'
11	10" x 4" Tee	19	A	1	13+07/Lt. 06	8.0'	7'
12	10" x 4" Tee	18	A	1	13+79/Lt. 77	8.5'	7'
13	10" x 4" Tee	17	A	1	14+60/Lt. 65	8.0'	7'
14	10" x 4" Tee	16	A	1	15+33/Lt.	8.5'	7'
15	10" x 4" Tee	15	A	1	16+11/Lt.	9.0'	7'
16	10" x 4" Tee	14	A	1	16+80/Lt.	9.5'	7'
17	4" Stub	12	A	1	17+57.2/Rt.	9.0'	7'

NOTE: Vertical Riser Pipe shall be extended to 2' minimum above ground water elevation and 4' maximum below proposed ground elevation.



		Tyler's Landing 3rd Addition Phase 1	
		Line 1	
Sanitary Sewer Improvements		Baughman Company, P.A. 315 Ella St. Wichita, KS 67211 P 316-262-7771 F 316-262-0149 ENGINEERING SURVEYING PLANNING LANDSCAPE ARCHITECTURE	
PROJECT NUMBER 468-84063	DESIGN AEG	DRAWN JWH/TMS	DATE 08/05
REVISIONS:	APPROVED	SCALE Noted	SHEET
		3 OF 21	
F:\eng\Tyler's Landing 3rd\va1.dwg		0507E281	