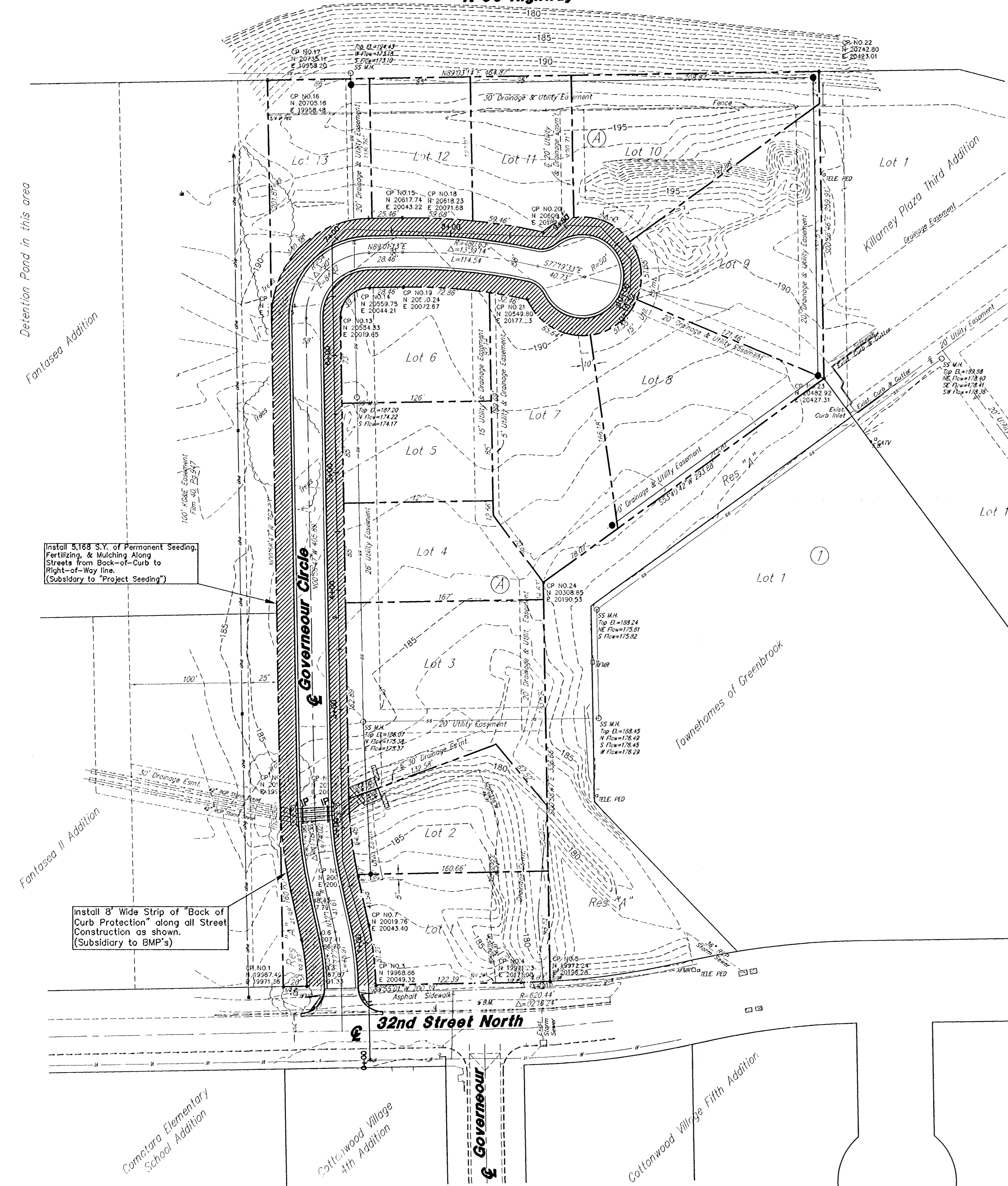


**Northeast Expressway  
K-96 Highway**

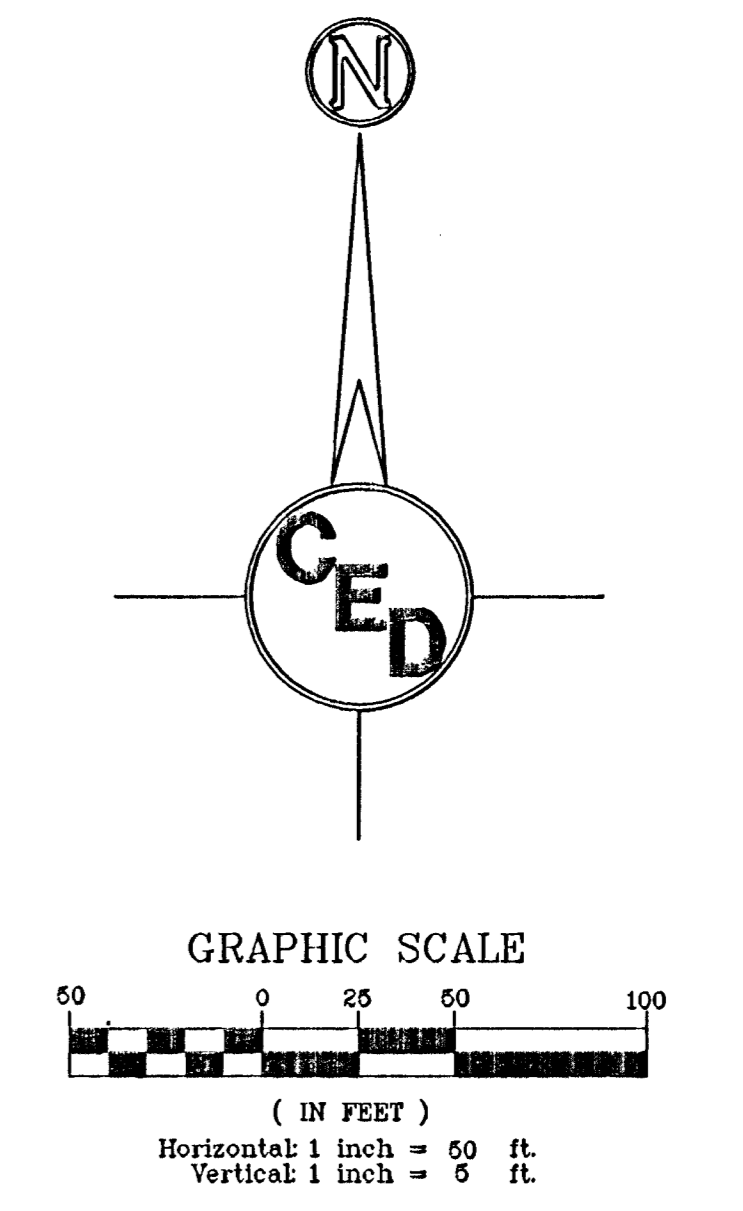


**HORIZONTAL CONTROL POINTS**

C.P. NO. 1	N 1997.49 E 19971.36	SW COR. RES. A 1/2" REBAR
C.P. NO. 2	N 1997.87 E 19991.33	SE COR. RES. A 1/2" REBAR
C.P. NO. 3	N 1998.88 E 20049.32	SW COR. LOT 1 1/2" REBAR
C.P. NO. 4	N 19971.23 E 20171.90	PT. ON S. LINE LOT 1 1/2" PIPE
C.P. NO. 5	N 19972.24 E 20198.28	SE COR. LOT 1 5/8" REBAR
C.P. NO. 6	N 20007.41 E 19988.73	PT. ON E. LINE RES. A 1/2" REBAR
C.P. NO. 7	N 20019.78 E 20043.40	PT. ON W. LINE LOT 1 1/2" REBAR
C.P. NO. 8	N 20048.43 E 19977.79	PT. ON E. LINE RES. A 1/2" REBAR
C.P. NO. 9	N 20060.77 E 20034.46	NW COR. LOT 1 1/2" REBAR
C.P. NO. 10	N 20127.51 E 19968.59	NORTHERLY COR. RES. A 1/2" REBAR
C.P. NO. 11	N 20128.50 E 20028.59	NW COR. LOT 2 1/2" REBAR
C.P. NO. 12	N 20533.34 E 19961.65	SW COR. LOT 13 1/2" REBAR
C.P. NO. 13	N 20534.33 E 20019.65	PT. ON W. LINE LOT 6 1/2" REBAR
C.P. NO. 14	N 20559.75 E 20044.21	PT. ON N. LINE LOT 6 1/2" REBAR
C.P. NO. 15	N 20617.74 E 20043.22	PT. ON S. LINE LOT 13 1/2" REBAR
C.P. NO. 16	N 20705.18 E 19958.48	PT. ON W. LINE LOT 13 3/4" IP P.E.C. CAP
C.P. NO. 17	N 20735.11 E 19958.20	NW COR. LOT 13 1/2" REBAR
C.P. NO. 18	N 20618.23 E 20071.68	PT. ON S. LINE LOT 12 1/2" REBAR
C.P. NO. 19	N 20560.24 E 20072.87	PT. ON N. LINE LOT 6 1/2" REBAR
C.P. NO. 20	N 20608.39 E 20189.95	SOUTHERLY CORNER LOT 11 1/2" REBAR
C.P. NO. 21	N 20549.80 E 20177.23	PT. ON N. LINE LOT 7 1/2" REBAR
C.P. NO. 22	N 20742.80 E 20423.01	NE COR. LOT 10 1/2" REBAR
C.P. NO. 23	N 20492.92 E 20427.31	SE COR. LOT 9 1/2" REBAR
C.P. NO. 24	N 20308.85 E 20190.53	SOUTHERLY CORNER LOT 7 1/2" REBAR

**LEGEND**

- 1/2" = 1/2" iron pipe (found)
- 3/8" = 5/8" rebar (found)
- 3/4" P.E.C. = 3/4" iron pipe (found), P.E.C. cap
- ⊕ = benchmark
- ⊕ CATV = Cable T.V.
- ⊕ E.B. = Electric Box
- X — = fence
- ⊕ = fire hydrant
- gas = gas
- ⊕ = high line power pole
- oh = overhead electric
- ⊕ = power pole
- ss = sanitary sewer
- ⊕ S.S.M.H. = sanitary sewer manhole
- ⊕ = sign
- ⊕ TELE PED = telephone pedestal
- ⊕ TRANS = transformer
- ⊕ = tree
- uga = underground electric
- ugt = underground telephone
- W = water



**EROSION CONTROL LEGEND**

- IP = Inlet Protection
- [Hatched Box] = Back of Curb Protection

\*See Sheets 12-14 for Best Management Practices (BMP) for Installation and Maintenance of Erosion Control Devices. (Contractor will be Responsible for any additional Erosion Control Devices not shown on these plans that are necessary to prevent erosion. All Costs are Subsidiary to the Lump Sum Bid Item for "BMP's" unless otherwise noted.)

**PERMANENT SEEDING**

**NOTE:** All areas disturbed by construction, excepting the paved areas, proposed sodded area and areas of undisturbed native sod or other desirable vegetation shall be fertilized (limed when required), seeded with K-31 Fescue, and mulched. Soil preparation shall conform to the Best Management Practices for Erosion and Sediment Control.

After the temporary seeding has been completed on the entire project, the permanent seeding shall be done during the normal seeding season.

It shall not be required to till the area to bare ground prior to permanent seeding. If temporary cover has provided stable slopes with no erosion, seed the permanent grasses into the existing cover. If there has been erosion that requires repair prior to seeding, then it may be necessary to regrade the area, resulting in bare ground.

**FERTILIZER:** A ratio and application rate that equals or exceeds the required minimum rate per acre listed in Summary of Seeding Quantities will be acceptable.

**MULCHING:** Mulch shall be spread uniformly over all disturbed areas and punched in the soil, unless otherwise noted on the plans. The rate of application per acre, thickness in place, for the various mulching materials are as follows:

Prairie Hay Mulching 1-3/4 to 2-1/4 Tons per Acre = 1-1/2" loose depth spread uniformly over acre.

The above rates are a guide. It will be at the discretion of the Engineer to determine what rate is sufficient for adequate protection of newly seeded areas.

The amount of mulch required shall be determined in the field.

**SUMMARY OF PERMANENT SEEDING QUANTITIES**

RATE OF APPLICATION (Pure Live Seed per acre)	DESCRIPTION	QUANTITY
100 Lbs./Acre	K-31 Fescue Grass Seed	As Required
125 Lbs./Acre	Fertilizer (16-20-0)	As Required
	Mulching	As Required

**BENCHMARK:**  
Bench Mark: City of Wichita Std. Disc  
Governour & 32nd Street N.  
6± N. of N. Curb  
Elevation = 1377.30 N.G.V.D., 189.9 City Datum

UTILITIES SHOWN REPRESENT THE BEST INFORMATION AVAILABLE FOR DESIGN. ADDITIONAL UTILITIES MAY BE PRESENT ON THIS PROJECT. THE CONTRACTOR SHALL BE RESPONSIBLE FOR DETERMINING THE EXACT LOCATION, DEPTH AND SIZE OF ALL UNDERGROUND UTILITIES PRIOR TO CONSTRUCTION. THE CONTRACTOR SHALL BE LIABLE FOR ANY DAMAGE CAUSED BY THE FAILURE TO DO SO.

**SURVEY DISCLAIMER:**  
TOPOGRAPHIC SURVEY AND CONTOUR MAP USED IN PREPARING PLANS WAS PROVIDED BY SAVOY COMPANY, P.A., 535 S. EMPORIA, SUITE 104, WICHITA, KS. ENGINEER DOES NOT GUARANTEE SURVEY ELEVATIONS FOR ACCURACY. CONTRACTOR SHALL VERIFY ELEVATIONS AND NOTIFY ENGINEER OF ANY DISCREPANCIES.

**SEEDING PERIODS**

COOL SEASON	WARM SEASON
February 15 to April 20	December 1 to April 30
August 15 to September 30	
SPECIES	SPECIES
Blue Grasses	Bluegrasses
Brome Grasses	Buffalo Grass
Fescues	Eastern Gama Grass
Rye Grasses	Gramas
Wheat Grasses	Indian Grass
Red Canary Grass	Love Grasses
	Switch Grass
	Wildflower Mixes

When "COOL SEASON" species are mixed with "WARM SEASON" species, in areas of 5 acres or more, the mixture shall be seeded during the "WARM SEASON". In areas of less than 5 acres, the mixture of "COOL SEASON" and "WARM SEASON" species may be seeded during the "WARM or COOL SEASONS".

KILLARNEY PLAZA EAST ADDITION  
**EROSION CONTROL & SITE PLAN**  
WICHITA, SEDGWICK COUNTY, KANSAS  
PROJ. NO.: 20041204  
**CERTIFIED ENGINEERING DESIGN, P.A.**  
810 WEST DOUGLAS, SUITE C  
WICHITA, KANSAS 67203  
PH.(316)262-8808 FAX.(316)262-1669

DESIGNED: HDF  
DRAWN: AEE  
CHECKED: HDF

SCALE: 1"=50'  
DATE: 06/05  
CED FILE: K-boss

SHEET 3  
TOTAL 16