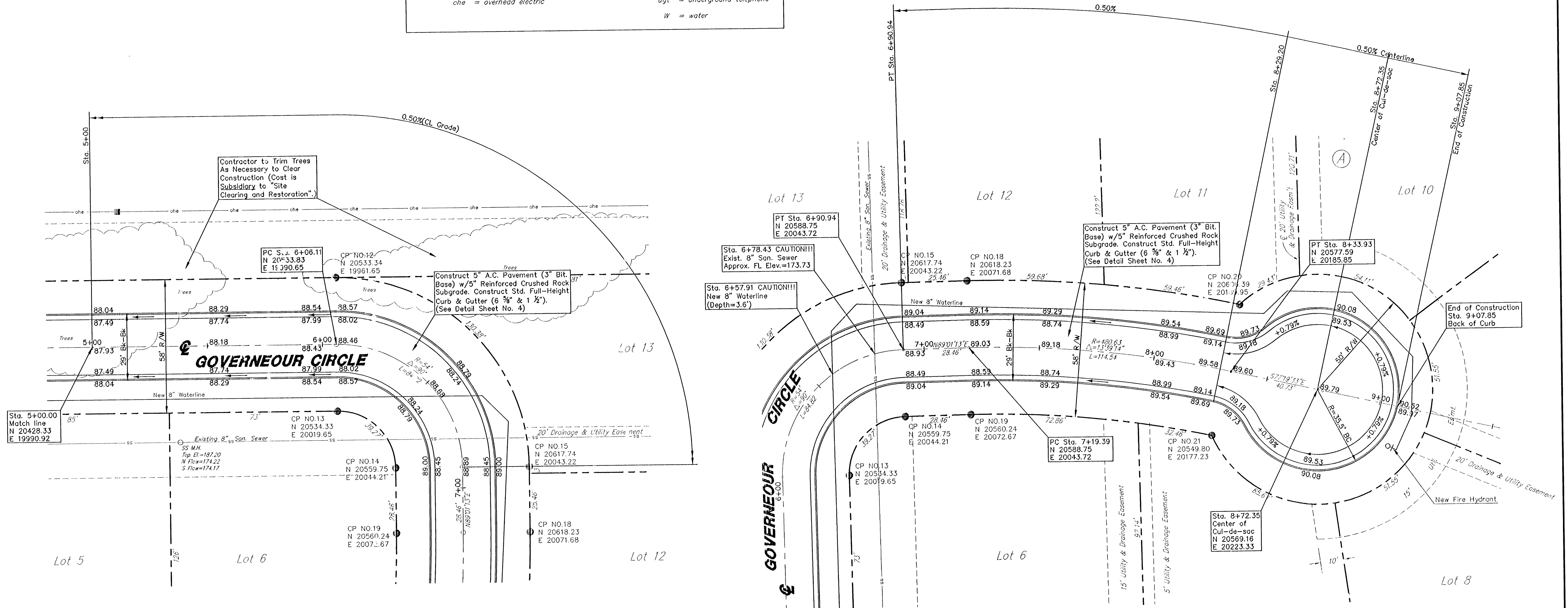
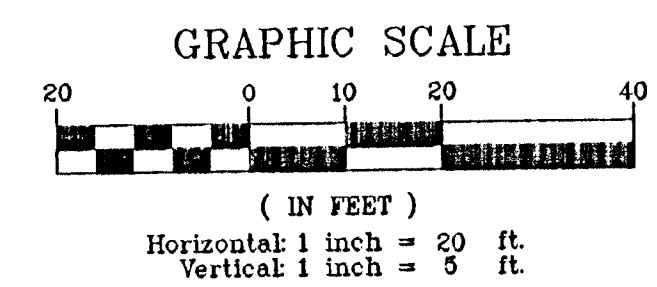
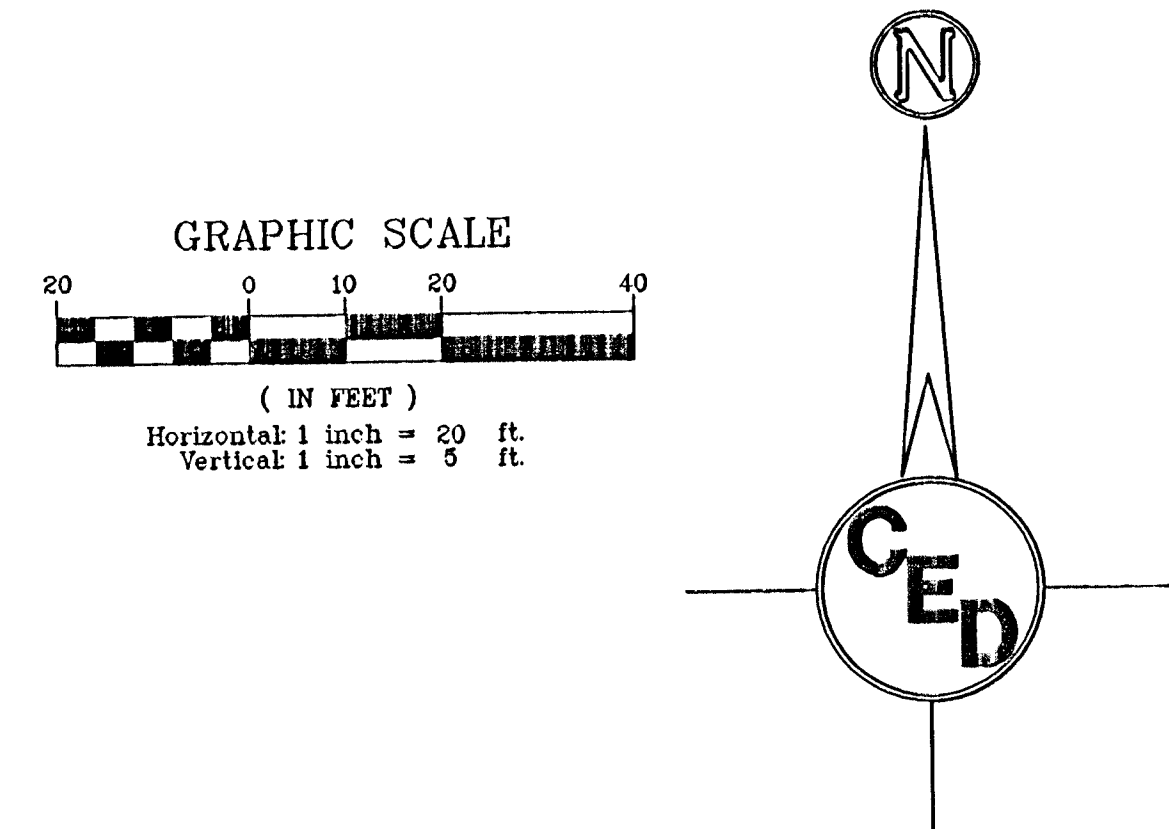


LEGEND

$\frac{1}{2} \phi_0$ = 1/2" iron pipe (found)	• = power pole
$\frac{3}{8} \phi$ = 3/8" rebar (found)	ss = sanitary sewer
$\frac{3}{4} \phi_{P.E.C.}$ = 3/4" iron pipe (found), P.E.C. cap	SS M.H. = sanitary sewer manhole
• = benchmark	• = sign
\square_{CATV} = Cable T.V.	$\square_{TELE. PED.}$ = telephone pedestal
$\square_{E.B.}$ = Electric Box	$\square_{TR.}$ = transformer
-X- = fence	• = tree
• = fire hydrant	• = underground electric
gas = gas	ugt = underground telephone
• = high line power pole	W = water
che = overhead electric	



UTILITIES SHOWN REPRESENT THE BEST INFORMATION AVAILABLE FOR DESIGN. ADDITIONAL UTILITIES MAY BE PRESENT ON THIS PROJECT. THE CONTRACTOR SHALL BE RESPONSIBLE FOR DETERMINING THE EXACT LOCATION, DEPTH AND SIZE OF ALL UNDERGROUND UTILITIES PRIOR TO CONSTRUCTION. THE CONTRACTOR SHALL BE LIABLE FOR ANY DAMAGE CAUSED BY THE FAILURE TO DO SO.

SURVEY DISCLAIMER:
 TOPOGRAPHIC SURVEY AND CONTOUR MAP USED IN PREPARING PLANS WAS PROVIDED BY SAVOY COMPANY, P.A., 535 S. EMPORIA, SUITE 104, WICHITA, KS. ENGINEER DOES NOT GUARANTEE SURVEY ELEVATIONS FOR ACCURACY. CONTRACTOR SHALL VERIFY ELEVATIONS AND NOTIFY ENGINEER OF ANY DISCREPANCIES.

BENCHMARK:
 Bench Mark: City of Wichita Std. Disc
 Gouverneur & 32nd Street N.
 6"± N. of N. Curb
 Elevation = 1377.30 N.G.V.D., 189.9 City Datum

WICHITA, SEDGWICK COUNTY, KANSAS
GOVERNEOUR CIRCLE
 KILLARNEY PLAZA EAST ADDITION
 PROJ. NO.: 20041204
CERTIFIED ENGINEERING DESIGN, P.A.
 810 WEST DOUGLAS, SUITE C
 WICHITA, KANSAS 67203
 PH.(316)262-8808 FAX.(316)262-1669

DESIGNED: HDF	SCALE: 1"=20'	SHEET
DRAWN: AEE	DATE: 06-05	6
CHECKED: HDF	CEG FILE: K-base	TOTAL 16