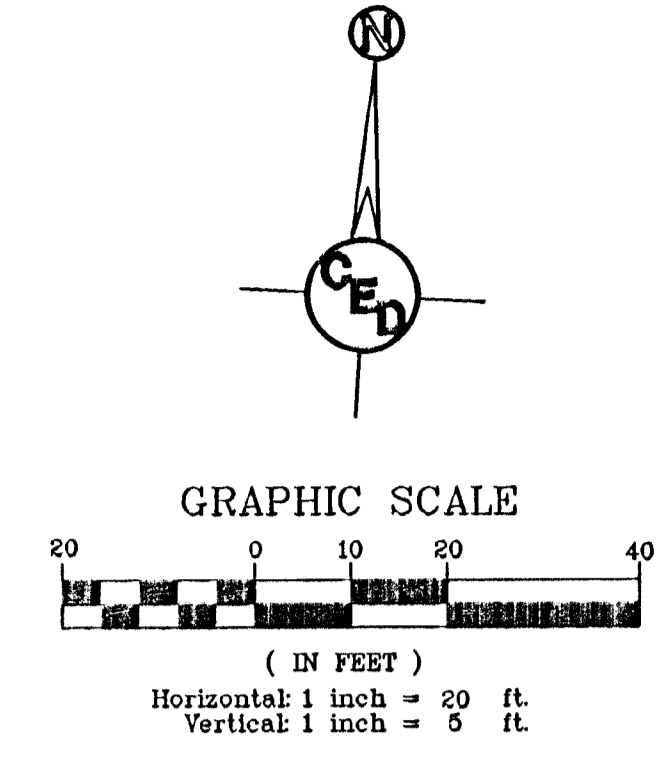


LEGEND

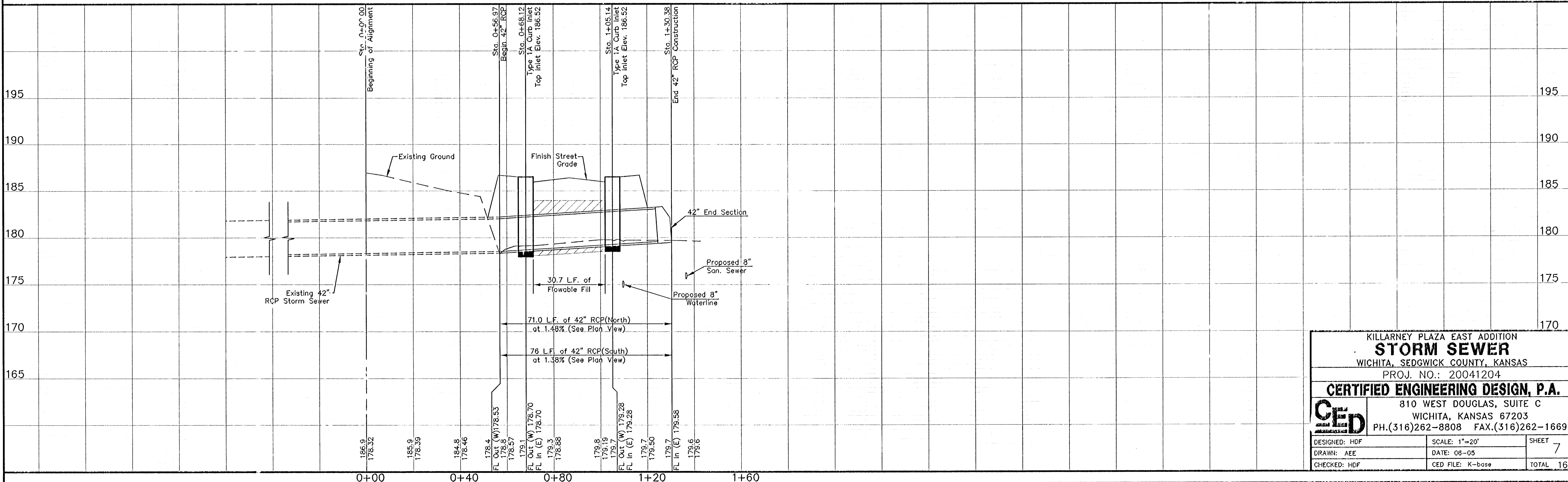
- 1/2" ϕ = 1/2" iron pipe (found)
- 5/8" ϕ = 5/8" rebar (found)
- 3/4" P.E.C. = 3/4" iron pipe (found), P.E.C. cap
- \odot = benchmark
- \square C.A.V. = Cable T.V.
- \square E.B. = Electric Box
- X = fence
- ϕ = fire hydrant
- gas = gas
- \blacksquare = high line power pole
- che = overhead electric
- \blacksquare = power pole
- ss = sanitary sewer
- SS M.H. = sanitary sewer manhole
- ∇ = sign
- \square TELE. PED. = telephone pedestal
- \square TRANS. = transformer
- \odot = tree
- uge = underground electric
- ugt = underground telephone
- W = water



UTILITIES SHOWN REPRESENT THE BEST INFORMATION AVAILABLE FOR DESIGN. ADDITIONAL UTILITIES MAY BE PRESENT ON THIS PROJECT. THE CONTRACTOR SHALL BE RESPONSIBLE FOR DETERMINING THE EXACT LOCATION, DEPTH AND SIZE OF ALL UNDERGROUND UTILITIES PRIOR TO CONSTRUCTION. THE CONTRACTOR SHALL BE LIABLE FOR ANY DAMAGE CAUSED BY THE FAILURE TO DO SO.

SURVEY DISCLAIMER:
 TOPOGRAPHIC SURVEY AND CONTOUR MAP USED IN PREPARING PLANS WAS PROVIDED BY SAVOY COMPANY, P.A., 535 S. EMPORIA, SUITE 104, WICHITA, KS. ENGINEER DOES NOT GUARANTEE SURVEY ELEVATIONS FOR ACCURACY. CONTRACTOR SHALL VERIFY ELEVATIONS AND NOTIFY ENGINEER OF ANY DISCREPANCIES.

BENCHMARK:
 Bench Mark: City of Wichita Std. Disc Governor & 32nd Street N. 6' \pm N. of N. Curb
 Elevation = 1377.30 N.G.V.D., 189.9 City Datum



KILLARNEY PLAZA EAST ADDITION
STORM SEWER
 WICHITA, SEDGWICK COUNTY, KANSAS
 PROJ. NO.: 20041204
CERTIFIED ENGINEERING DESIGN, P.A.
 810 WEST DOUGLAS, SUITE C
 WICHITA, KANSAS 67203
 PH.(316)262-8808 FAX.(316)262-1669

DESIGNED: HDF	SCALE: 1"=20'	SHEET
DRAWN: AEE	DATE: 06-05	7
CHECKED: HDF	CED FILE: K-base	TOTAL 16