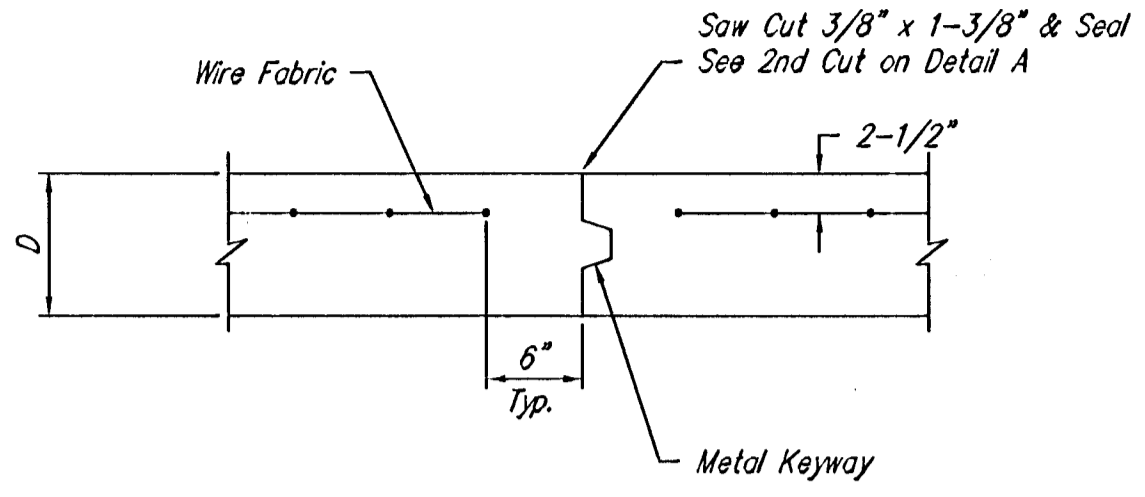
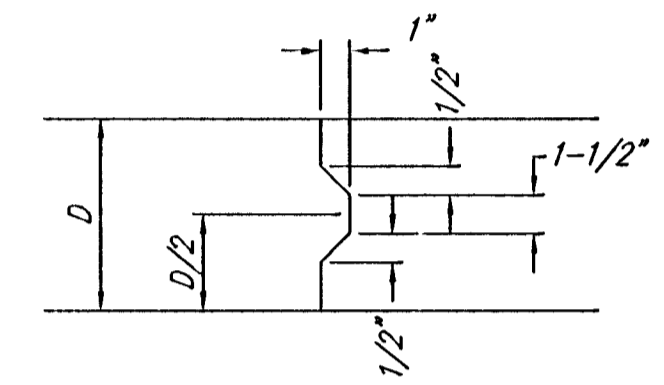


**EXPANSION JOINT**

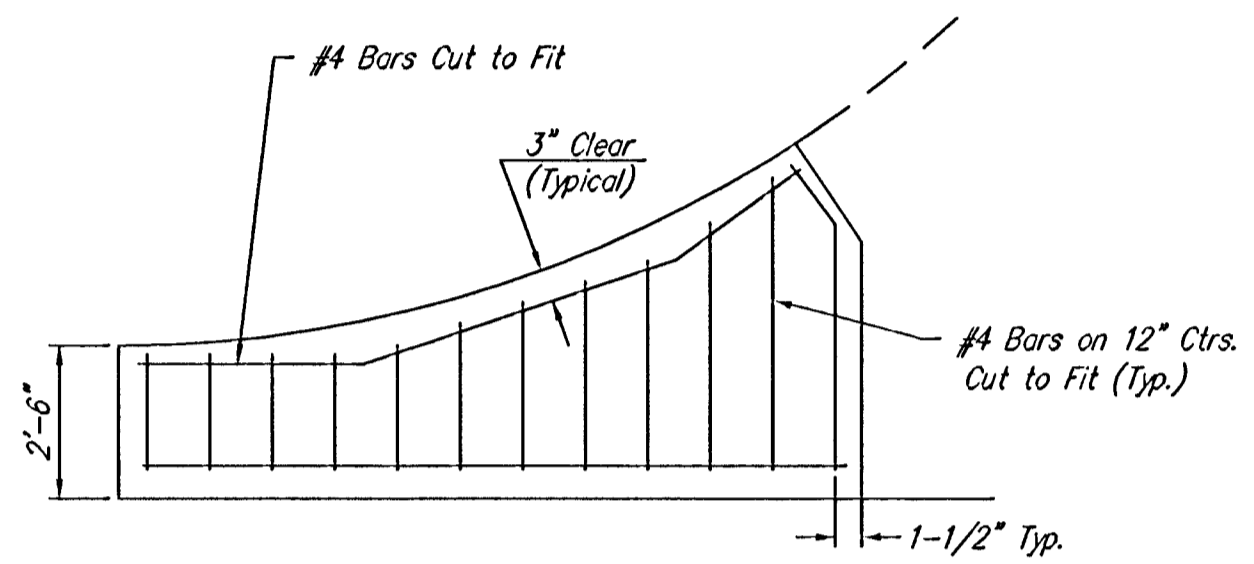
NOTE: Extra Thickness to be Subsidiary to Price of Square Yards Pavement



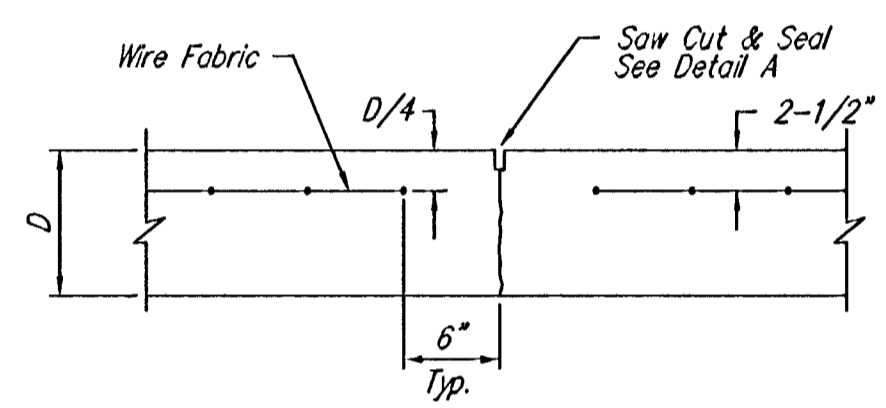
**OPTIONAL CONTRACTION JOINT**



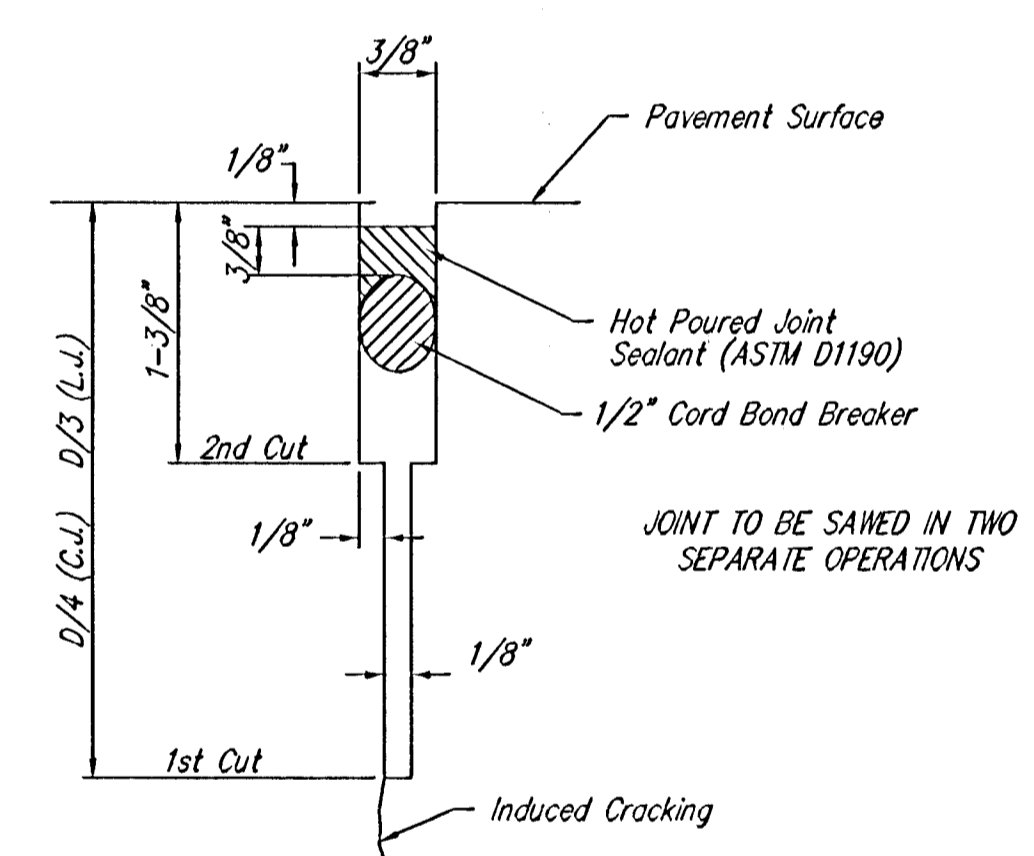
**KEYWAY DETAIL**



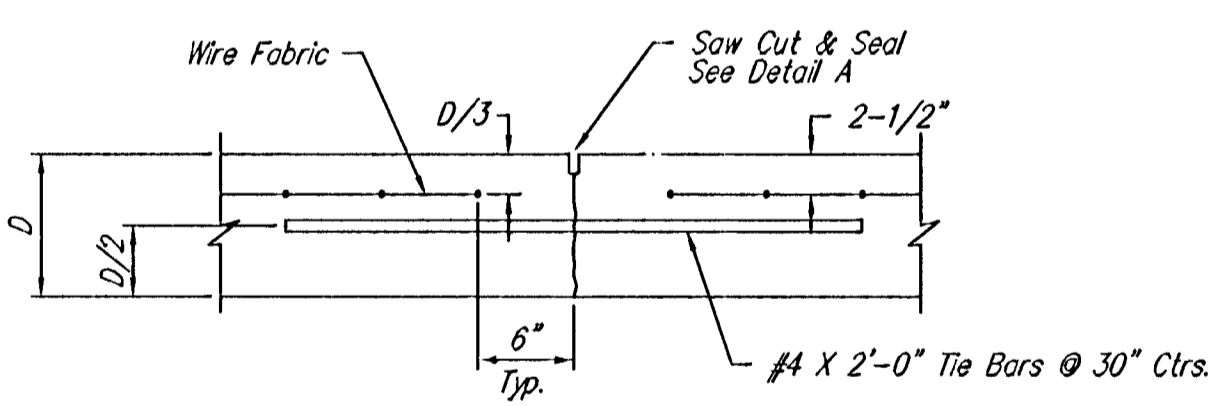
**WING REINFORCING DETAIL**



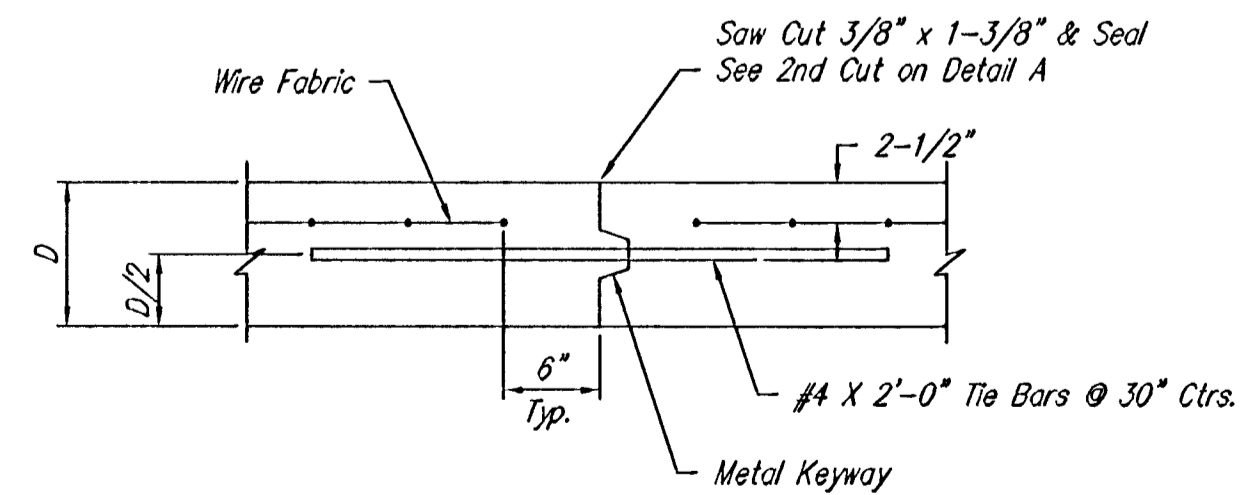
**CONTRACTION JOINT DETAIL (C.J.)**



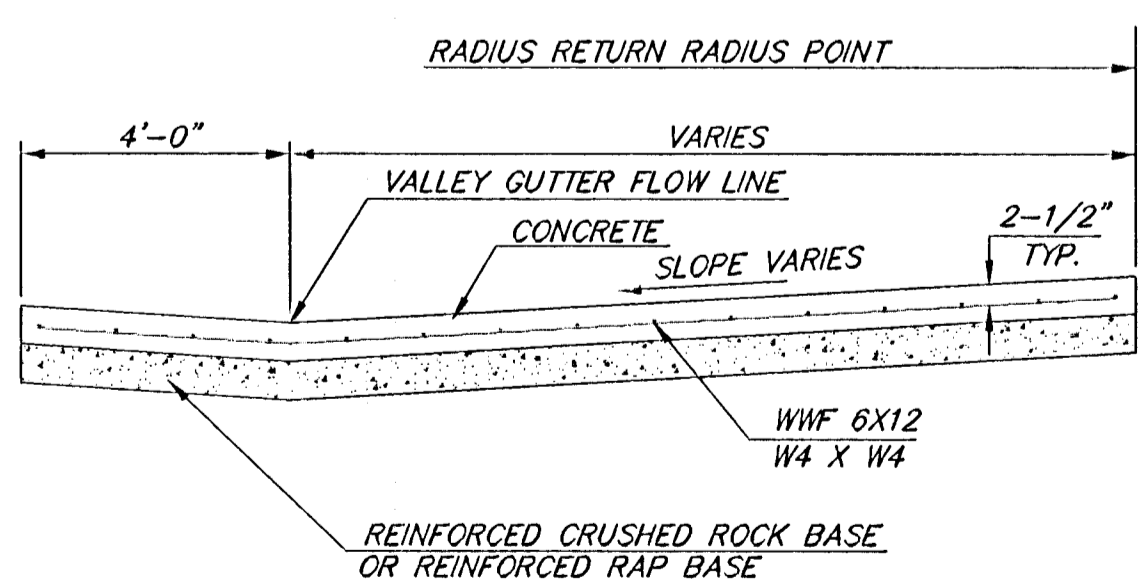
**SAW JOINT DETAIL**



**LONGITUDINAL JOINT DETAIL (L.J.)**



**OPTIONAL LONGITUDINAL JOINT DETAIL (L.J.)**

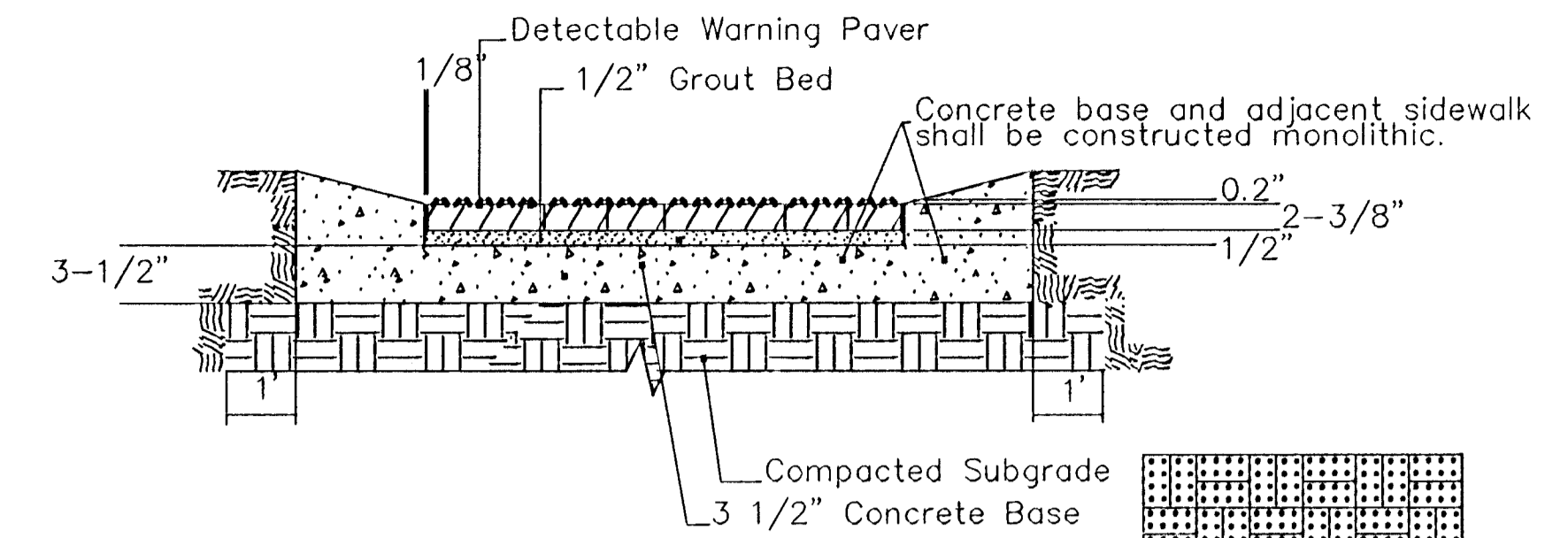
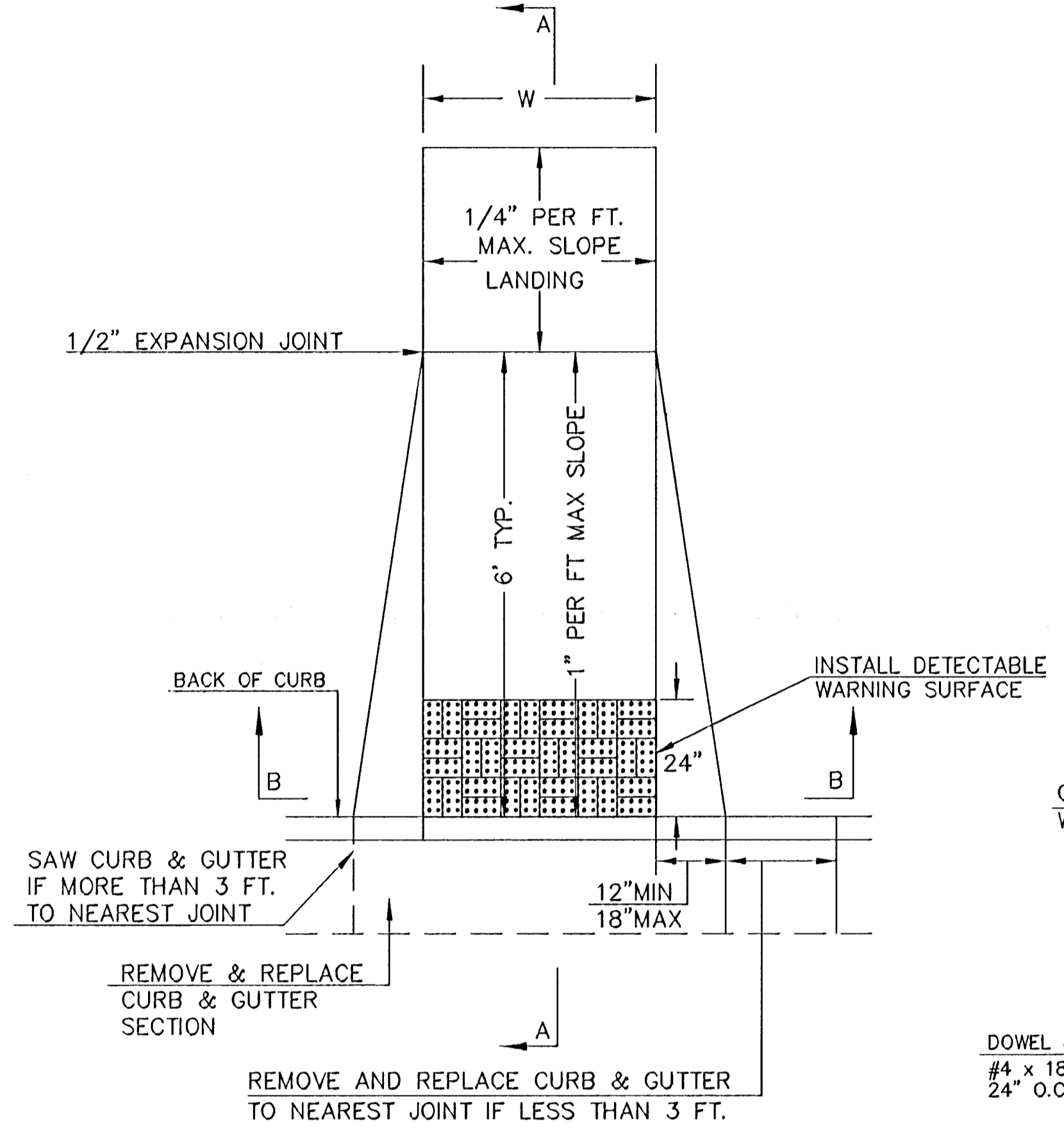


**SECTION A-A**

**REINFORCED VALLEY GUTTER DETAIL**

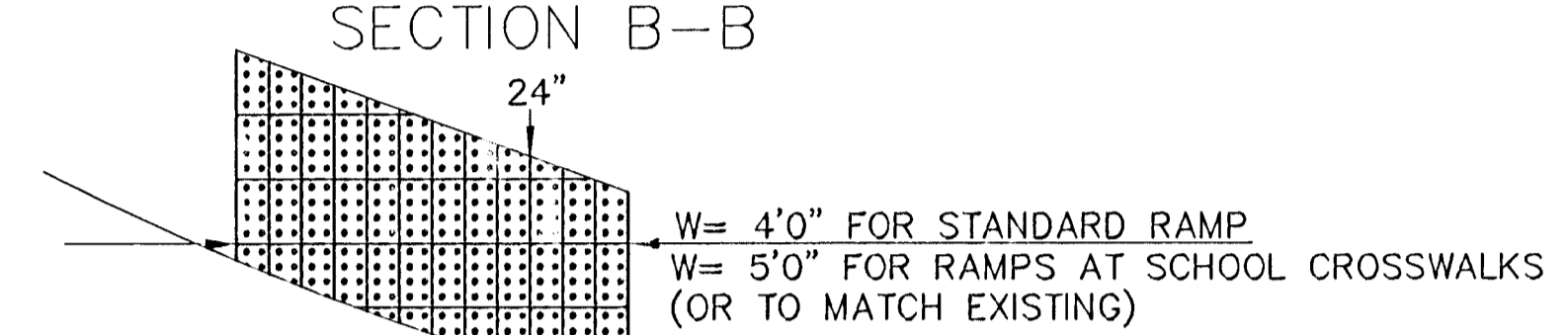
**(TYPE A) STANDARD WHEELCHAIR RAMP WITH DETECTABLE WARNING CONSTRUCTION DETAIL FOR STREETS WITH COMBINED CURB & GUTTER**

W= 4'0" FOR STANDARD RAMP  
W= 5'0" FOR RAMPS AT SCHOOL CROSSWALKS (OR TO MATCH EXISTING)

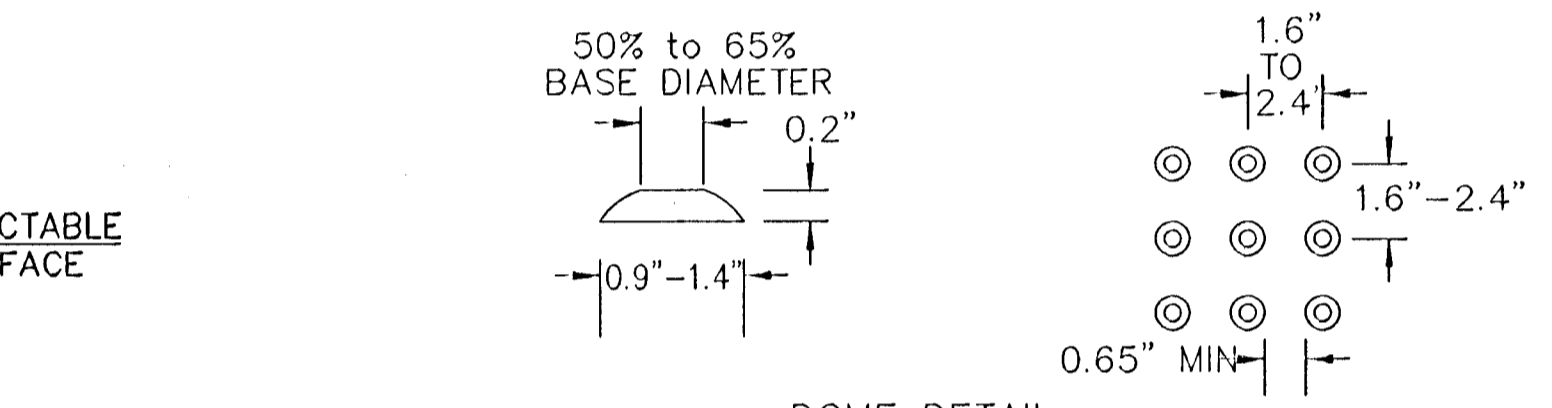


**TYPICAL SECTION DETECTABLE WARNING PAVER**

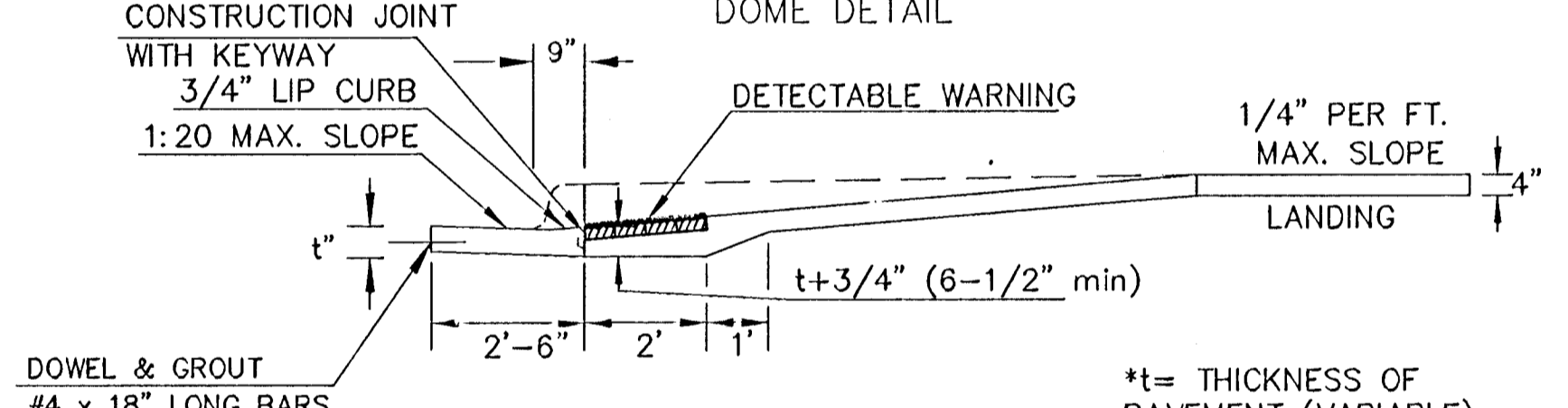
NOTE: RAMPS TO COMPLY WITH LATEST ADAAG GUIDELINES. PAVESTONE DETECTABLE WARNING PAVERS (OR AN APPROVED EQUAL) SHALL BE USED IN ALL WHEELCHAIR RAMPS. THE RED PAVER SHALL BE INSTALLED USING A BASKET WEAVE/PARQUET PATTERN. OTHER PATTERNS MAY BE USED WITH APPROVAL OF ENGINEER. SAND FILL JOINTS. ALIGN DOMES IN THE DIRECTION OF PEDESTRIAN TRAVEL.



NOTE: USE THIS BRICK PATTERN WHEN RAMP INTERSECTS A RADIUS. OTHER MINIMUM STANDARDS REMAIN THE SAME.



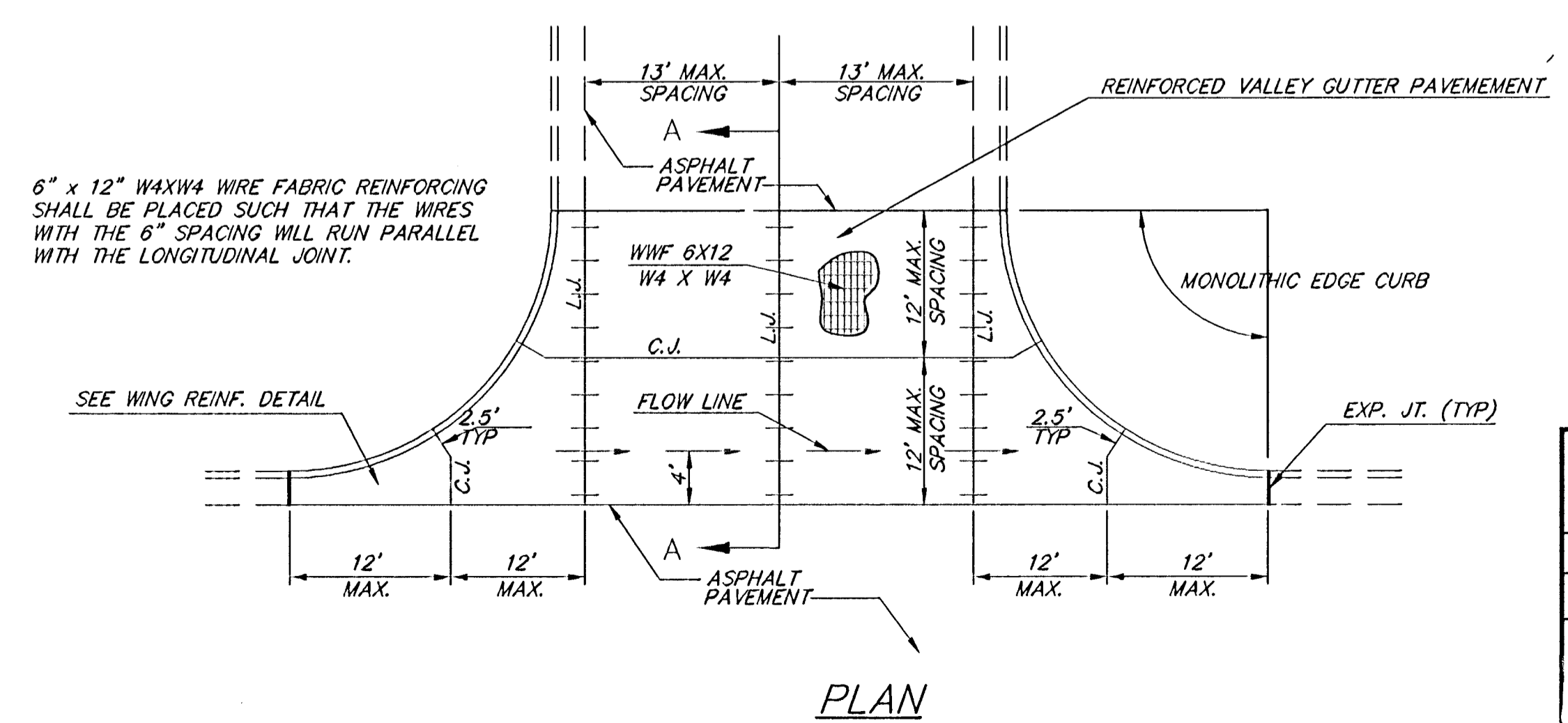
**DOMES DETAIL**



**SECTION A-A**

\*t= THICKNESS OF PAVEMENT (VARIABLE)

NOVEMBER 14, 2003



**PLAN**

KILLARNEY PLAZA EAST ADDITION  
**VALLEY GUTTER DETAILS**  
 WICHITA, SEDGWICK COUNTY, KANSAS  
 PROJ. NO.: 20041204  
**CERTIFIED ENGINEERING DESIGN, P.A.**  
 810 WEST DOUGLAS, SUITE C  
 WICHITA, KANSAS 67203  
 PH.(316)262-8808 FAX.(316)262-1669

DESIGNED: HDF	SCALE: NTS	SHEET
DRAWN: AEE	DATE: 08/05	9
CHECKED: HDF	CEDESIGN: K--details	TOTAL 16