

FINAL PLAT

KISER WEST ADDITION

AN ADDITION TO WICHITA SEDGWICK COUNTY, KANSAS

SW. COR., NE. 1/4 SEC.16,
T27S, R2E, 6th P.M.
FOUND CENTER OF SECTION
STONE

FOUND 1" PIPE 0.2'
SOUTH AND 0.3' EAST
OF DEEDED CORNER

FOUND 3/4" PIPE

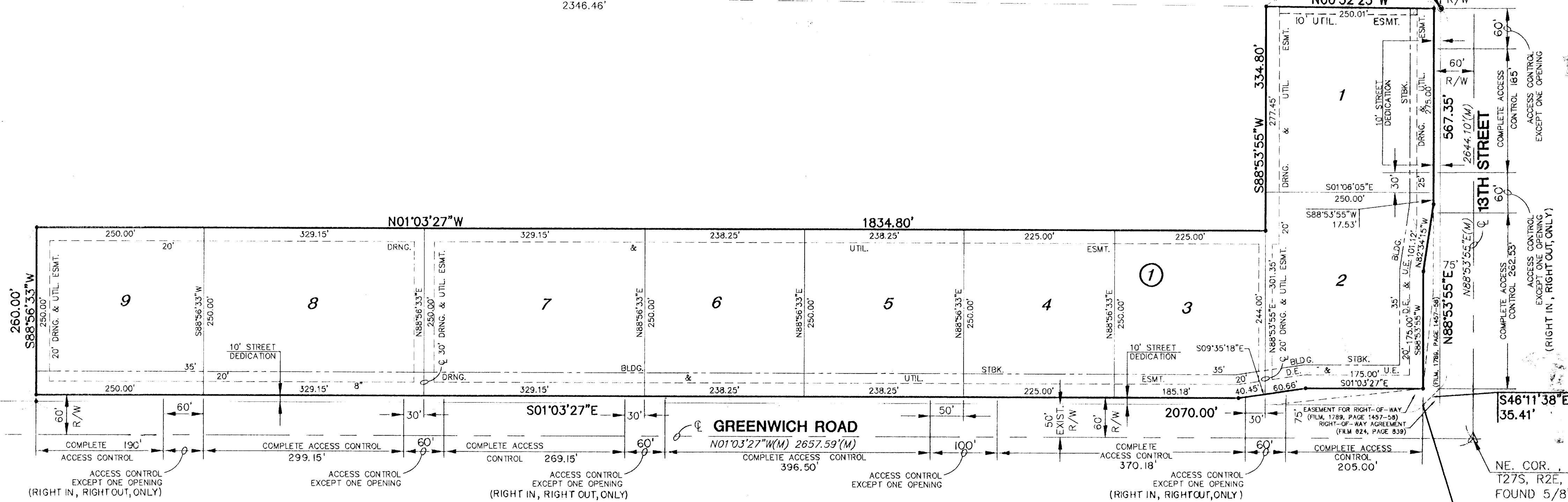
SE. COR., NE. 1/4 SEC.16,
T27S, R2E, 6th P.M.
FOUND 3/4" PIPE

N01°00'09"W (M) WEST LINE NE. 1/4 2652.65'(M)

N00°32'23"W
2346.46'

FND. 1/2"
REBAR AND
PEC CAP

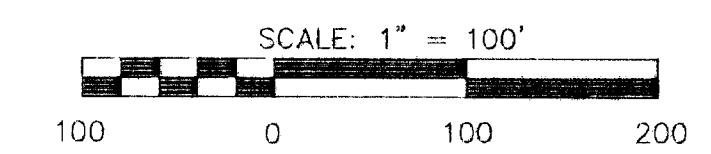
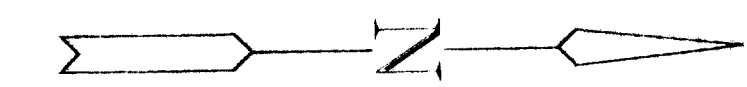
NW. COR., NE. 1/4
SEC.16, T27S, R2E,
6th P.M.
FOUND 5/8" REBAR
AND GARBER CAP



S46°11'38"E
35.41'

NE. COR., NE. 1/4 SEC.16,
T27S, R2E, 6th P.M.
FOUND 5/8" REBAR AND
GARBER CAP

P.O.B.



LEGEND

- = FOUND 1/2" REBAR AND PEC CAP
- = SET 5/8" REBAR/MKEC CLS 39
- △ = FOUND SECTION CORNER MONUMENT
- (M) = MEASURED DIMENSION
- U.E. = UTILITY EASEMENT
- D.E. = DRAINAGE EASEMENT

DSNR: MDK OPER: REFJ SCALE: 1=100.00
 C:\2005\05582\05582-000-C-Plat02 11-01-2005 10:45:23 am

	Revision LATERAL 377 FOUR MILE CREEK SEWER PLAT (KISER WEST ADDITION) JAMES L. ARMOUR, P.E. - CITY ENGINEER CITY OF WICHITA PROJECT NO. 468-84050		
Professional Engineering Consultants, P.A. 303 S. TOPEKA • WICHITA, KANSAS 67202 316-262-2691 • FAX 316-262-3003			
Designed by	MDK	Job No.	35-05582-042
Drawn by		Date	OCTOBER 2005
			Sht. 4 of 13