

FOR INFORMATION ONLY (To be determined by measure.)	
VERTICAL DEPTH	HORIZONTAL
19.75'	15'
19'	15'
18'	15'
8.6'	4'
6.18'	13'
9.56'	7'
9.56'	32'

VERTICAL RISER DETAILS

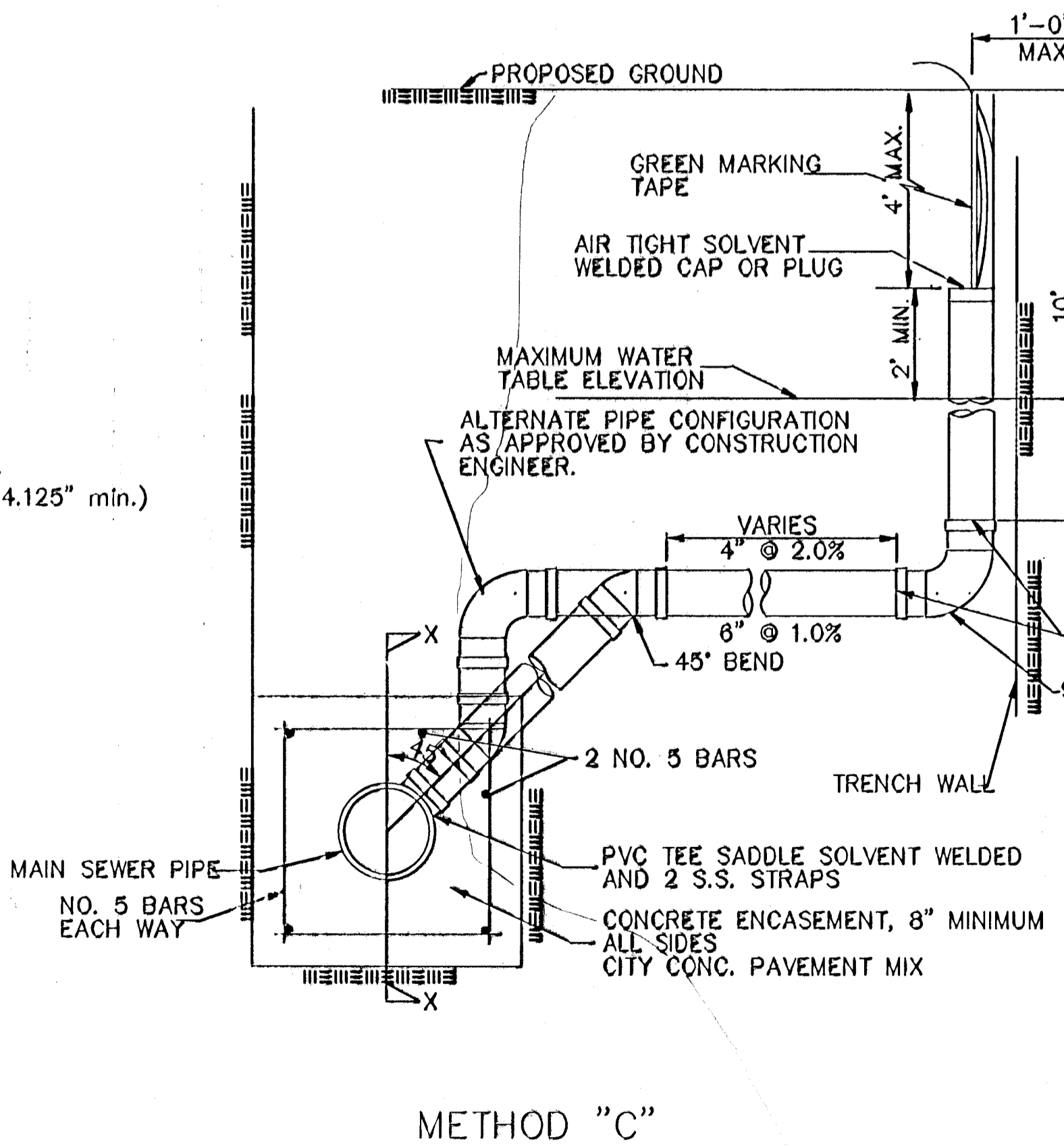
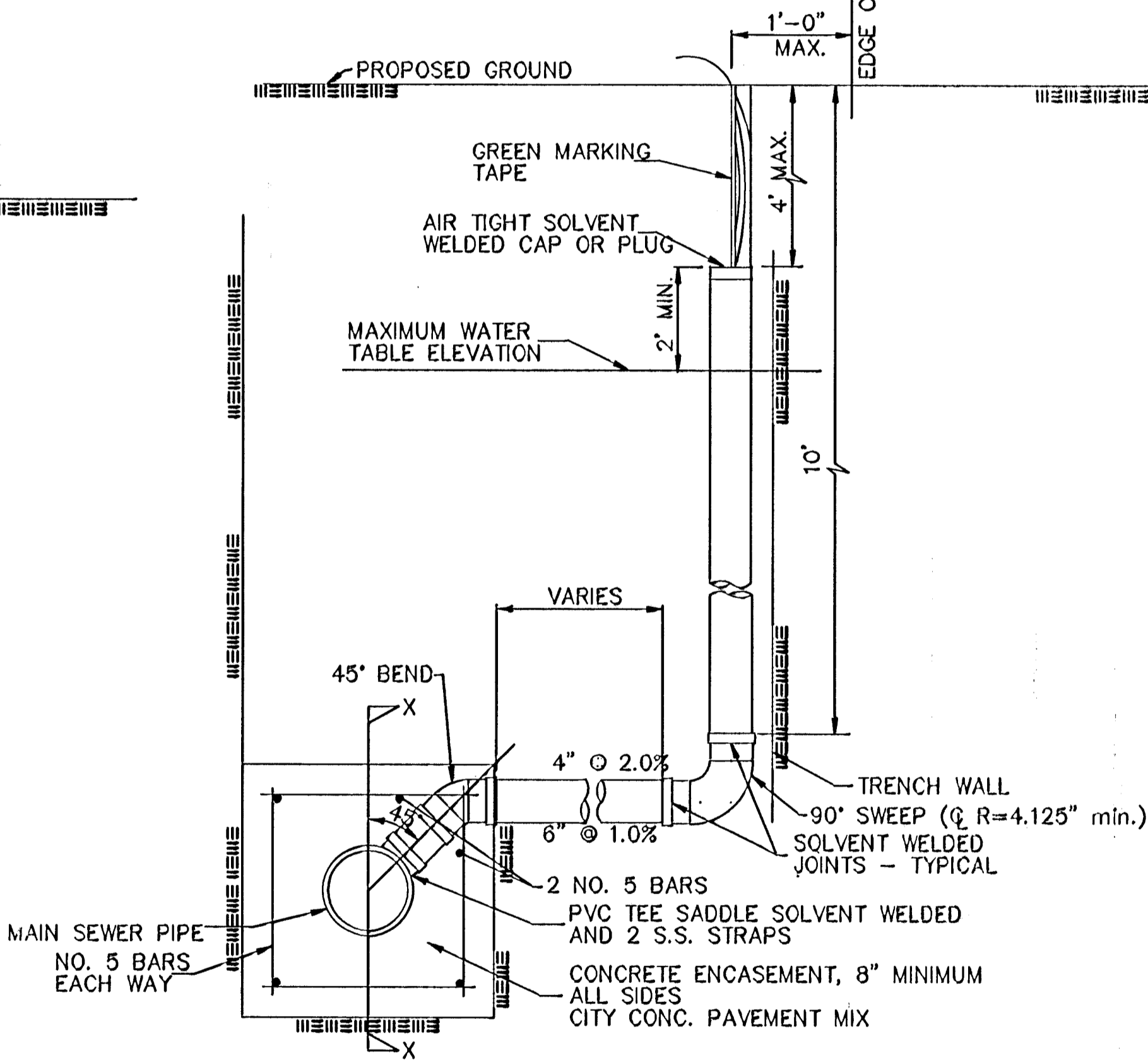
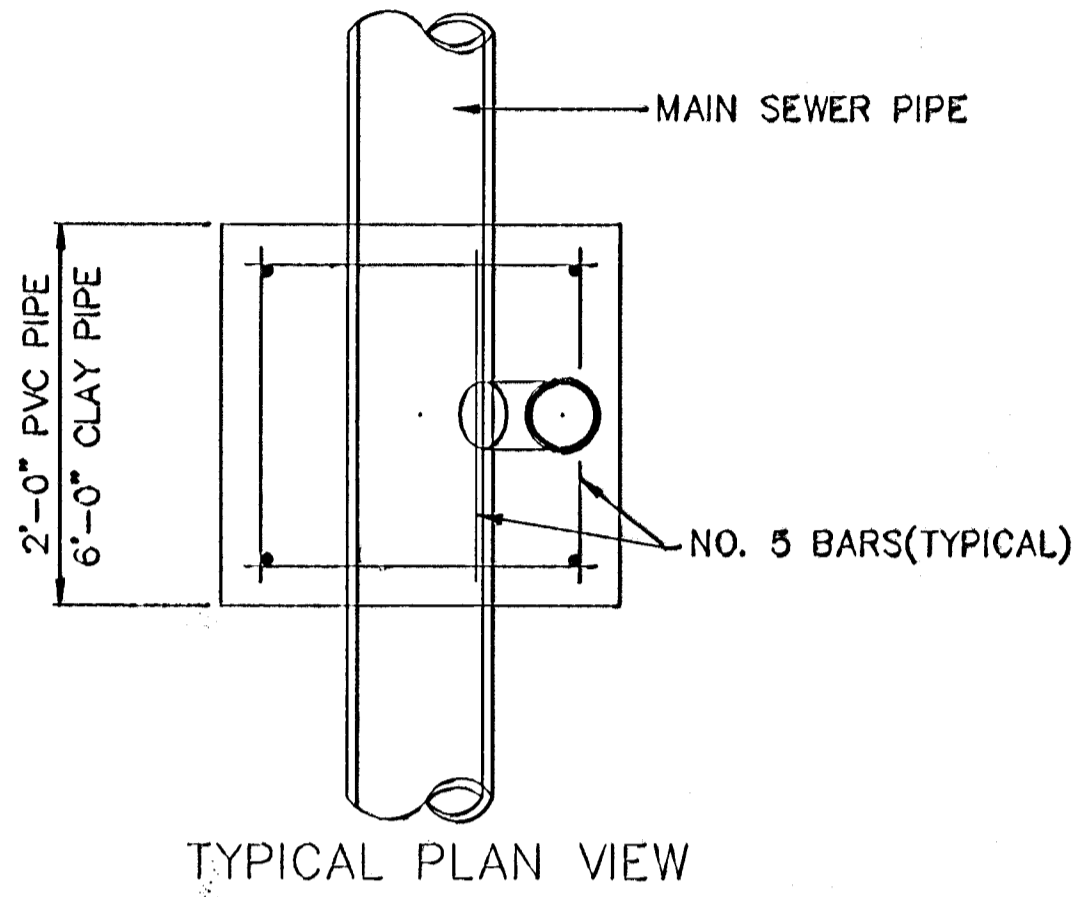
ADOPTED AS STANDARD DESIGN

BY

CITY OF WICHITA, KANSAS

OCTOBER 1992

STM D 2665)
and water



WELDED
MINIMUM

RISER PIPE REQUIREMENTS AT MANHOLE STUBS SHALL BE SIMILAR TO THOSE SHOWN ABOVE.