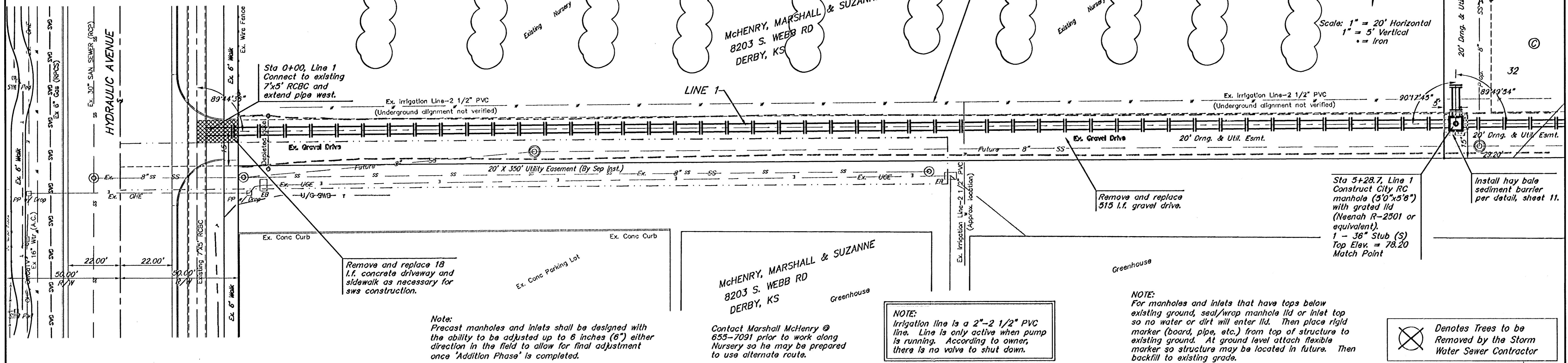


**Benchmark:**  
 City of Wichita Benchmark Disc,  
 Hydraulic and 55th Street South,  
 42.00' North of Centerline, 40.70'  
 West of Centerline, 3.70' North of  
 centerline of Power Pole, 58.20'  
 Northwest of Southeast Corner, Sec.  
 21, Twp. 28-S, R-1-E.  
 Elev. = 76.19 City Datum  
 Elev. = 1263.59 (NGVD29)



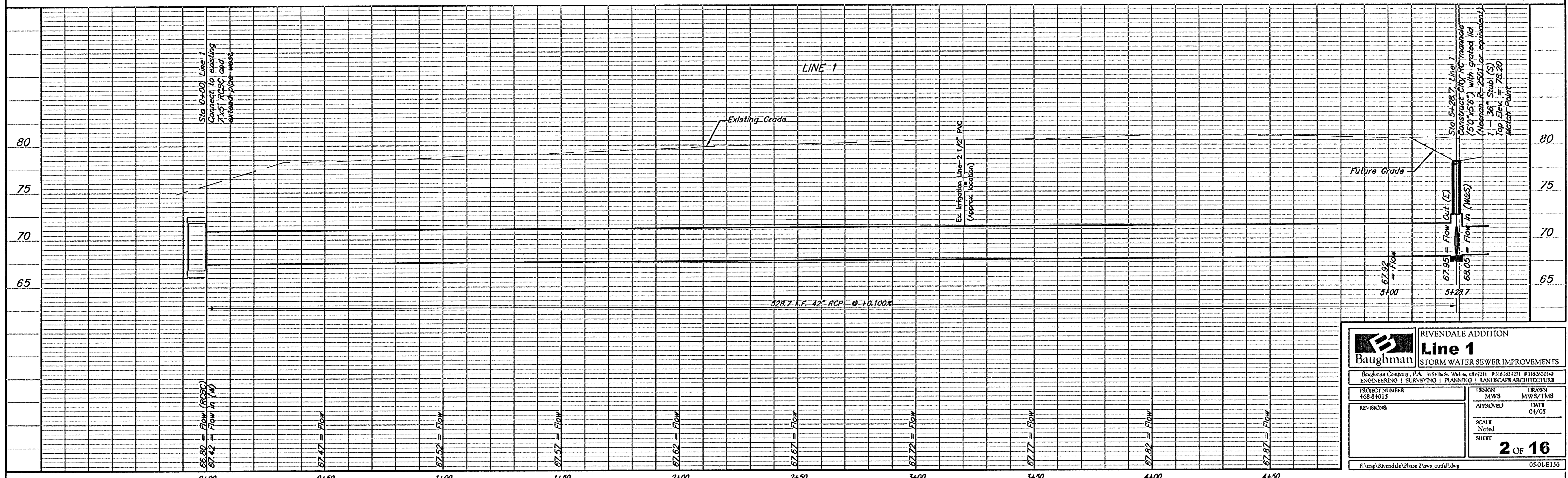
**Note:**  
 Precast manholes and inlets shall be designed with the ability to be adjusted up to 6 inches (6") either direction in the field to allow for final adjustment once 'Addition Phase' is completed.

Contact Marshall McHenry @ 655-7091 prior to work along Nursery so he may be prepared to use alternate route.

**NOTE:**  
 Irrigation line is a 2"-2 1/2" PVC line. Line is only active when pump is running. According to owner, there is no valve to shut down.

**NOTE:**  
 For manholes and inlets that have tops below existing ground, seal/wrap manhole lid or inlet top so no water or dirt will enter lid. Then place rigid marker (board, pipe, etc.) from top of structure to existing ground. At ground level attach flexible marker so structure may be located in future. Then backfill to existing grade.

Denotes Trees to be Removed by the Storm Water Sewer Contractor



<b>Baughman</b>		RIVENDALE ADDITION	
		<b>Line 1</b>	
		STORM WATER SEWER IMPROVEMENTS	
Baughman Company, P.A. 315 Ellis & Walnut, KS 67111 P: 316.262.7711 F: 316.262.6149			
ENGINEERING   SURVEYING   PLANNING   LANDSCAPE ARCHITECTURE			
PROJECT NUMBER 46844015	DESIGN MWS	DRAWN MWS/TMS	
REVISIONS	APPROVED	DATE 04/05	
	SCALE Noted	SHEET	
		<b>2 OF 16</b>	
F:\eng\Rivendale\Phase 2\sws_coutfall.dwg			05-01-B136