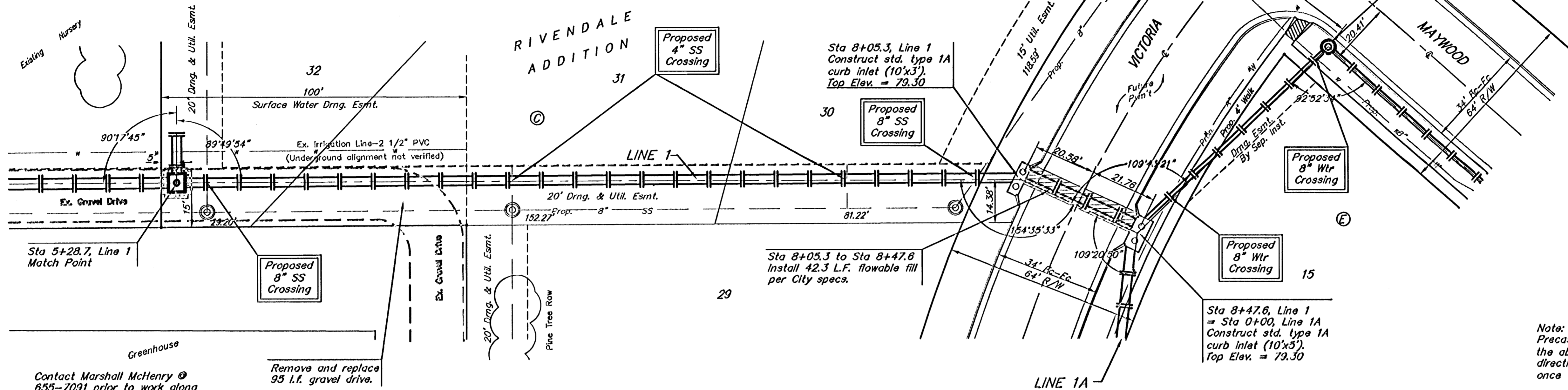


Benchmark:
 City of Wichita Benchmark Disc,
 Hydraulic and 55th Street South,
 42.00' North of Centerline, 40.70'
 West of Centerline, 3.70' North of
 centerline of Power Pole, 58.20'
 Northwest of Southeast Corner, Sec.
 21, Twp. 28-S, R-1-E.
 Elev. = 76.19 City Datum
 Elev. = 1263.59 (NGVD29)

NOTE:
 For manholes and inlets that have tops below
 existing ground, seal/wrap manhole lid or inlet top
 so no water or dirt will enter lid. Then place rigid
 marker (board, pipe, etc.) from top of structure to
 existing ground. At ground level attach flexible
 marker so structure may be located in future. Then
 backfill to existing grade.

Sta 9+36.5, Line 1
 Construct std.
 manhole.
 Top Elev. = 80.10
 Match Point



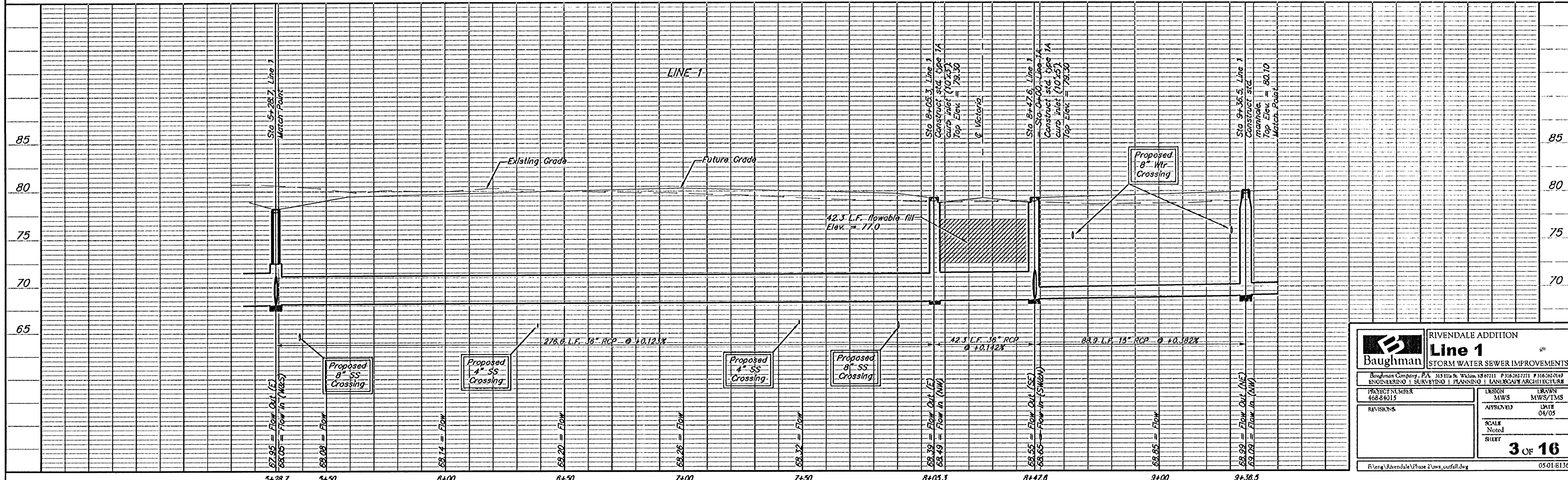
Contact Marshall McHenry @
 655-7091 prior to work along
 Nursery so he may be prepared
 to use alternate route.

Remove and replace
 95 l.f. gravel drive.

Note:
 Precast manholes and inlets shall be designed with
 the ability to be adjusted up to 6 inches (6") either
 direction in the field to allow for final adjustment
 once 'Addition Phase' is completed.

Denotes Trees to be
 Removed by the Storm
 Water Sewer Contractor

Scale: 1" = 20' Horizontal
 1" = 5' Vertical
 • = Iron



		RIVENDALE ADDITION Line 1 STORM WATER SEWER IMPROVEMENTS	
<small>Baughman Company, P.A. 3150 S. & W. 134th St. P.O. Box 27111, Overland Park, KS 66207-0111 ENGINEERING SURVEYING PLANNING LANDSCAPE ARCHITECTURE</small>			
<small>PROJECT NUMBER</small> 468-84015	<small>DESIGN</small> MWS	<small>DRAWN</small> MWS/TMS	<small>DATE</small> 04/05
<small>REVISIONS</small>	<small>APPROVED</small>	<small>SCALE</small> Noted	<small>SHEET</small> 3 OF 16
<small>F:\eng\Rivendale\Phase 2\lms_civil.dwg</small>			<small>05-01-1136</small>