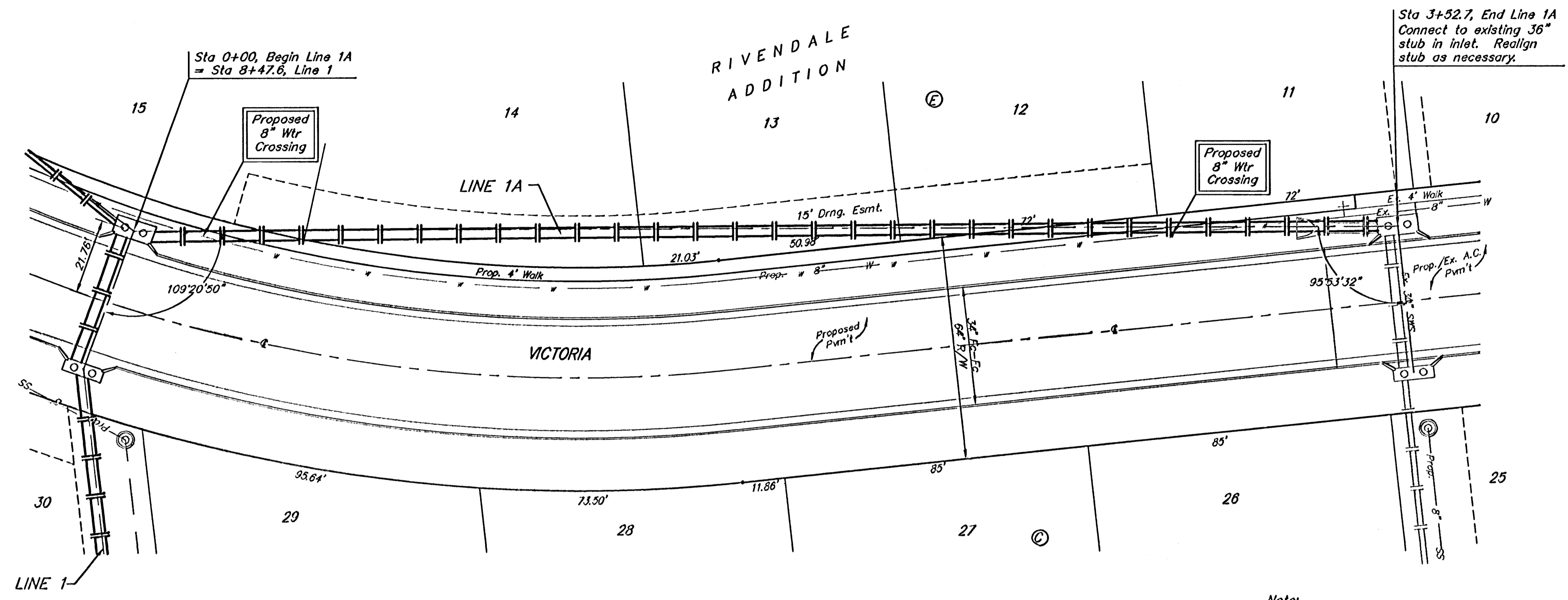


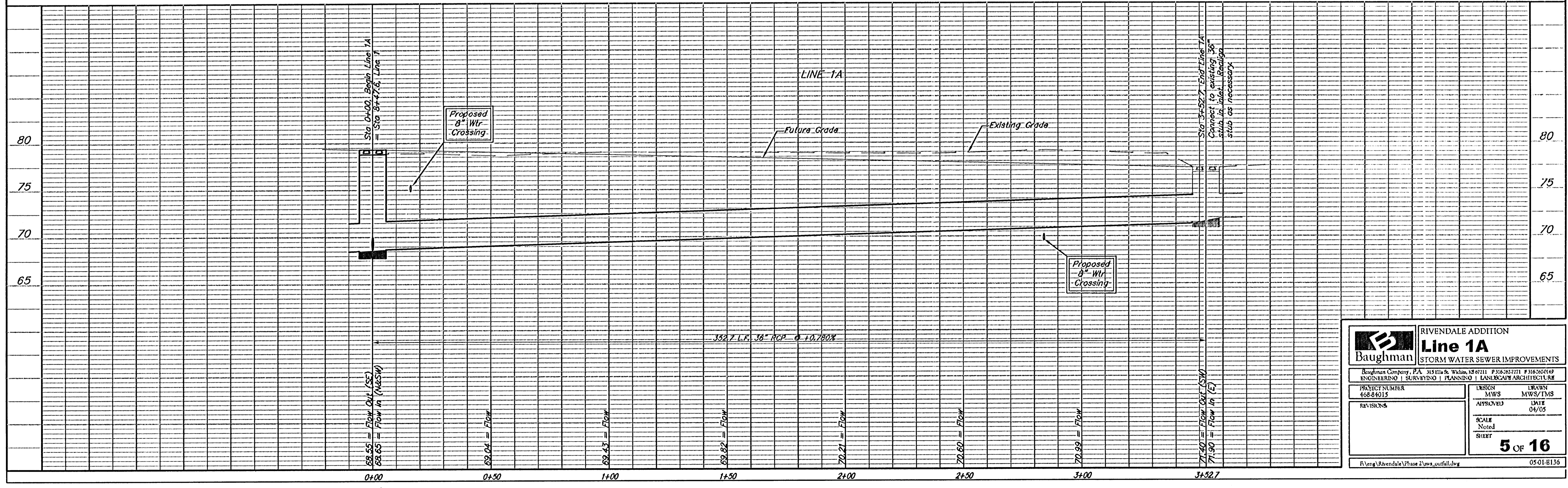
Benchmark:
 City of Wichita Benchmark Disc,
 Hydraulic and 55th Street South,
 42.00' North of Centerline, 40.70'
 West of Centerline, 3.70' North of
 centerline of Power Pole, 58.20'
 Northwest of Southeast Corner, Sec.
 21, Twp. 28-S, R-1-E.
 Elev. = 76.19 City Datum
 Elev. = 1263.59 (NGVD29)



Scale: 1" = 20' Horizontal
 1" = 5' Vertical
 • = Iron

Note:
 Precast manholes and inlets shall be designed with
 the ability to be adjusted up to 6 inches (6") either
 direction in the field to allow for final adjustment
 once 'Addition Phase' is completed.

⊗ Denotes Trees to be
 Removed by the Storm
 Water Sewer Contractor



Baughman		RIVENDALE ADDITION	
Line 1A		STORM WATER SEWER IMPROVEMENTS	
Baughman Company, P.A. 315 Elm St. Wichita, KS 67211 P 316-262-7771 F 316-262-6149 ENGINEERING SURVEYING PLANNING LANDSCAPE ARCHITECTURE			
PROJECT NUMBER 468-84015	DESIGN MWS	DRAWN MWS/TMS	DATE 04/05
REVISIONS	APPROVED	SCALE Noted SHEET	
			5 OF 16
F:\eng\Rivendale\Phase 2\msa_courts.dwg			05-01-B136