

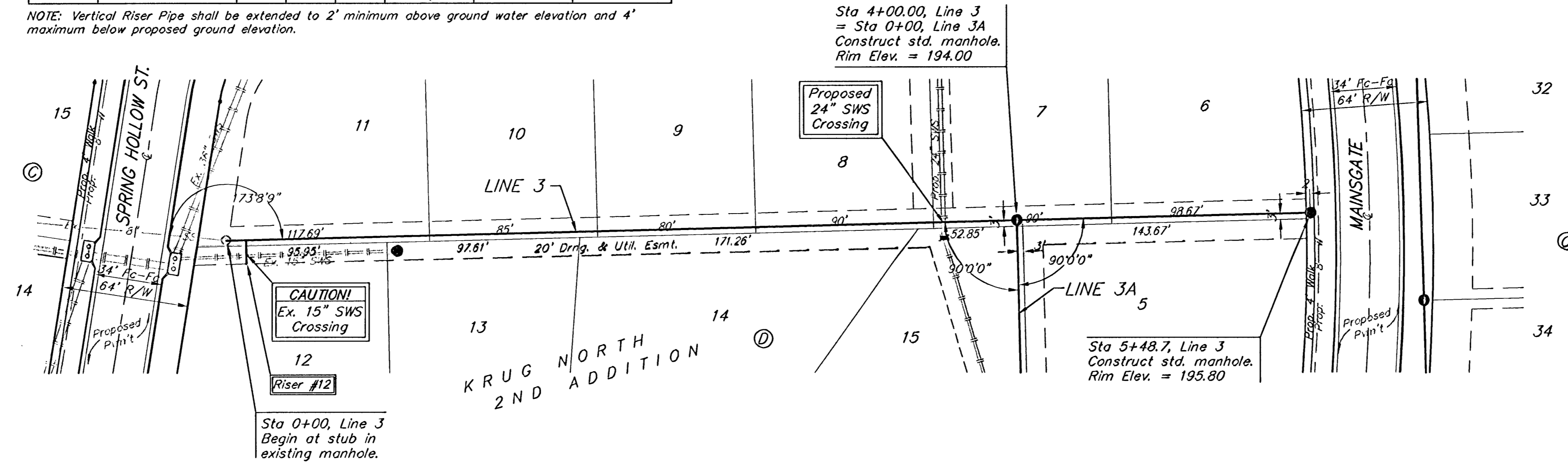
BENCHMARK:
 BM #1: "□" Cut in middle of N headwall of RCBC on 21st St. North. 1004.3' W & 22.1' N of SE Cor., SE 1/4, Sec. 2, T-27-S, R-2-E. Elev. = 173.23 City Datum

BM #2: "□" Cut at the SE corner of the intersection of Castle Rock & Castle Rock Ct., Krug North Addition. Elev. = 183.50 City Datum

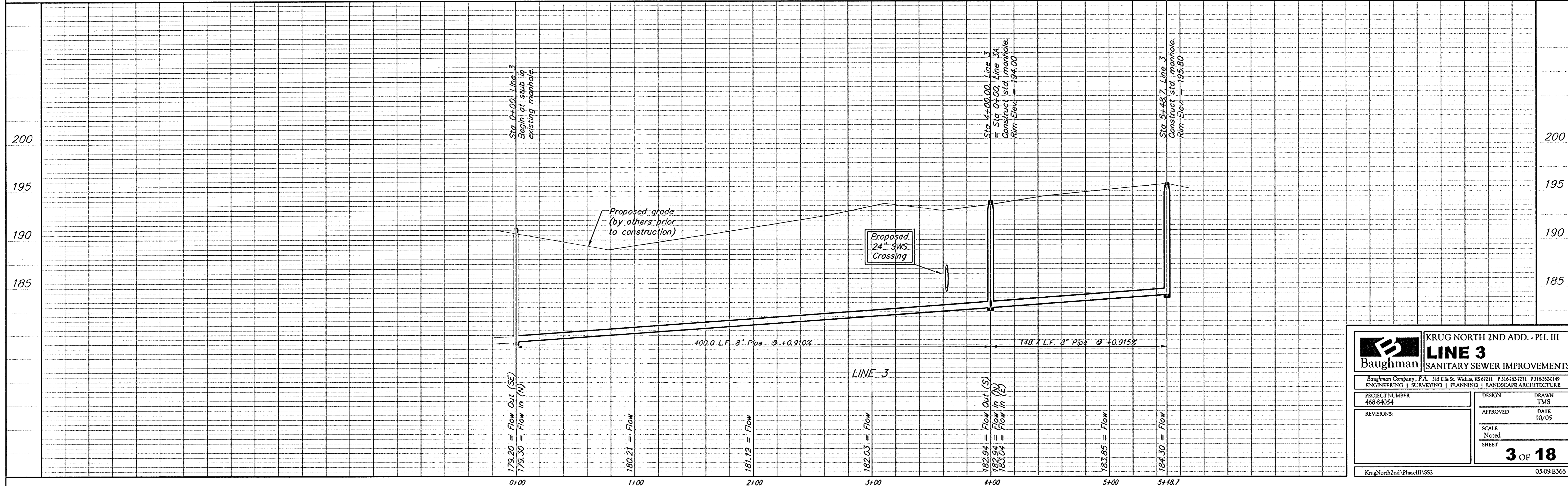
SEWER SERVICE TABLE

NUMBER	TYPE	LOCATION				FOR INFORMATION ONLY	
		LOT NO.	BLOCK NO.	LINE NO.	STATION\ DIRECTION	APPROXIMATE LENGTH 4" PIPE VERTICAL	HORIZONTAL
12	8" X 4" Tee	12	D	3	0+10/Rt.	7.5'	13'

NOTE: Vertical Riser Pipe shall be extended to 2' minimum above ground water elevation and 4' maximum below proposed ground elevation.



Scale: 1" = 40' Horizontal
 1" = 5' Vertical
 • = Iron



Baughman KRUG NORTH 2ND ADD. - PH. III
LINE 3
 SANITARY SEWER IMPROVEMENTS

Baughman Company, P.A. 315 Elm St. Wexford, PA 15151-1211 P 316-262-7271 F 316-262-0149
 ENGINEERING | SURVEYING | PLANNING | LANDSCAPE ARCHITECTURE

PROJECT NUMBER: 46834054 DESIGN: TMS DRAWN: TMS
 APPROVED: DATE: 10/05
 SCALE: Noted SHEET: 3 OF 18

KrugNorth2ndPhasIII11SS2 0509B366