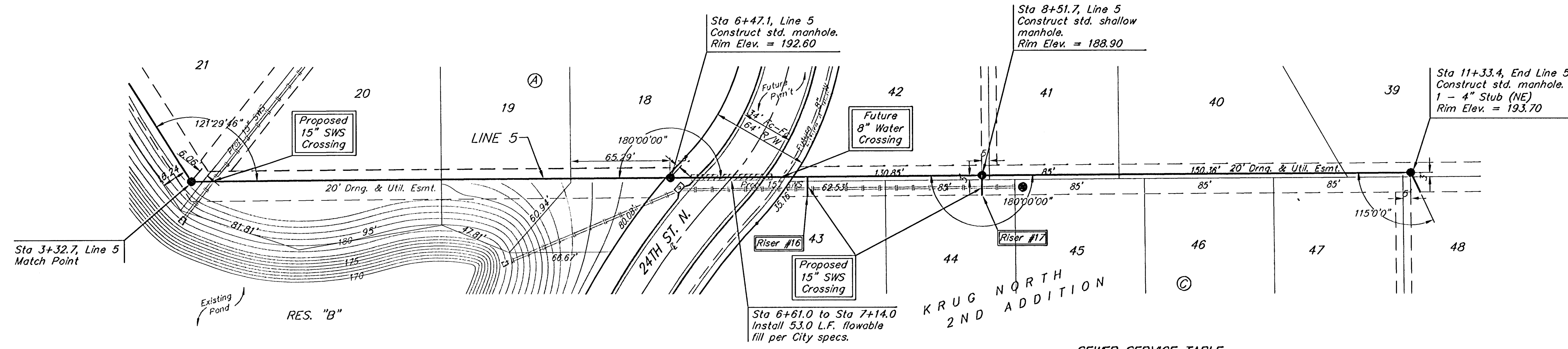


BENCHMARK:  
 BM #1: "□" Cut in middle of N headwall of RCBC on 21st St. North. 1004.3' W & 22.1' N of SE Cor., SE1/4, Sec. 2, T-27-S, R-2-E. Elev. = 173.23 City Datum

BM #2: "□" Cut at the SE corner of the intersection of Castle Rock & Castle Rock Ct., Krug North Addition. Elev. = 183.50 City Datum

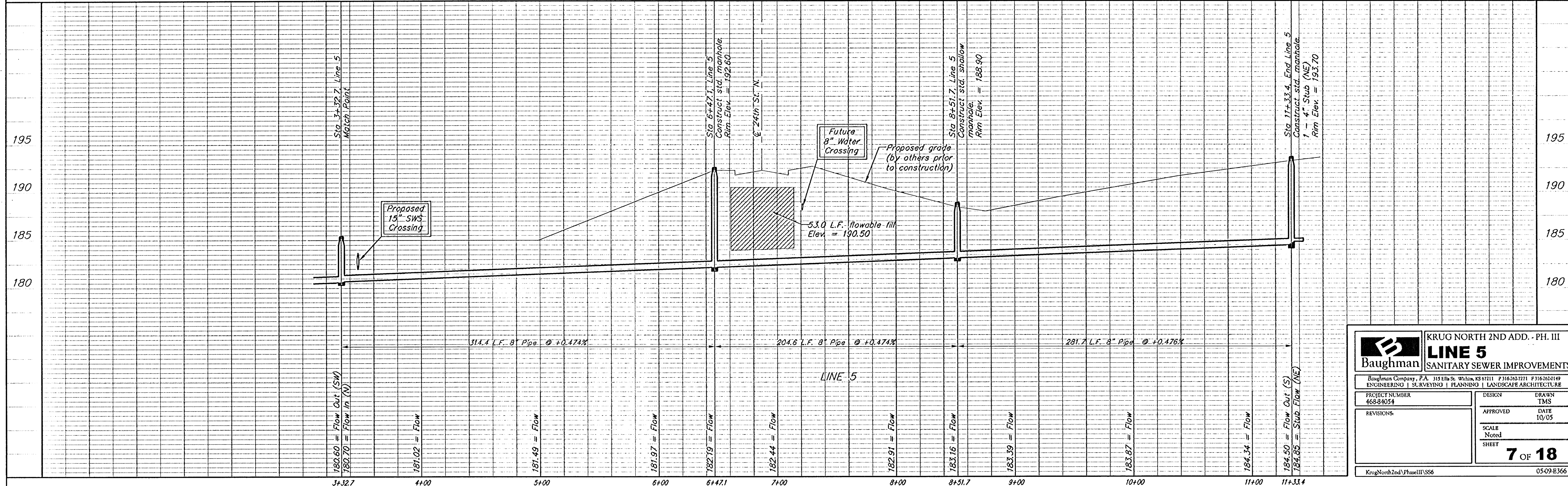
Scale: 1" = 40' Horizontal  
 1" = 5' Vertical  
 • = Iron



SEWER SERVICE TABLE

NUMBER	TYPE	LOCATION			STATION \ DIRECTION	FOR INFORMATION ONLY	
		LOT NO.	BLOCK NO.	LINE NO.		APPROXIMATE LENGTH 4" PIPE	VERTICAL
16	8" X 4" Tee	43	C	5	7+37/Rt.	6.0'	13'
17	4" Stub	44	C	5	8+51.7/Rt.	2.5'	13'

NOTE: Vertical Riser Pipe shall be extended to 2' minimum above ground water elevation and 4' maximum below proposed ground elevation.



**Baughman** **LINE 5**  
 SANITARY SEWER IMPROVEMENTS

Engineering | Surveying | Planning | Landscape Architecture

PROJECT NUMBER: 46834054  
 DESIGN: TMS  
 APPROVED: DATE 10/05  
 SCALE: Noted  
 SHEET: 7 OF 18

KrugNorth2ndPhaseIII SS6 05-09-E366