

4" SS Service (By Others)

STAB DEPTH = 8.40'
TOP LID ELEV = 1314.03
SS MH COW ID# 5550-034

Sta. 0+00.0, San Line 1
Connect to Existing
Manhole. Field Verify
if Inverts Require
Revisions or Modifications and
Reshape Invert if Required to
Ensure Smooth Flow
Top Elev. = 1314.06
N = 1703962.7505, E = 1651118.7965

29.3' EAST OF CL
OF N MEAD AND
406' SOUTH OF
CL OF N 29TH ST

CAUTION
Existing Gas,
OHE and AT&T.
Verify depth &
location.

Prop. 20' Sewer
Easement by S.I.

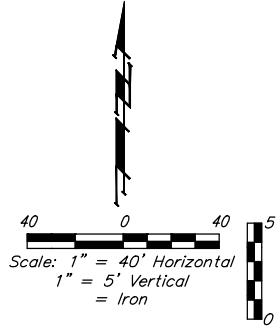
SS LINE 1 INSTALLED PER
ALIGNMENT

STAB DEPTH = 9.16'
TOP LID ELEV = 1315.03
SS MH COW ID# 5550-165

39.6' EAST OF CL OF N
MEAD AND 406' SOUTH
OF CL OF N 29TH ST

NOTES:
1. In the event the existing
manhole is lined, contractor
shall repair manhole lining
damaged during connection to
existing manhole in accordance
with City of Wichita Standard
Specifications.

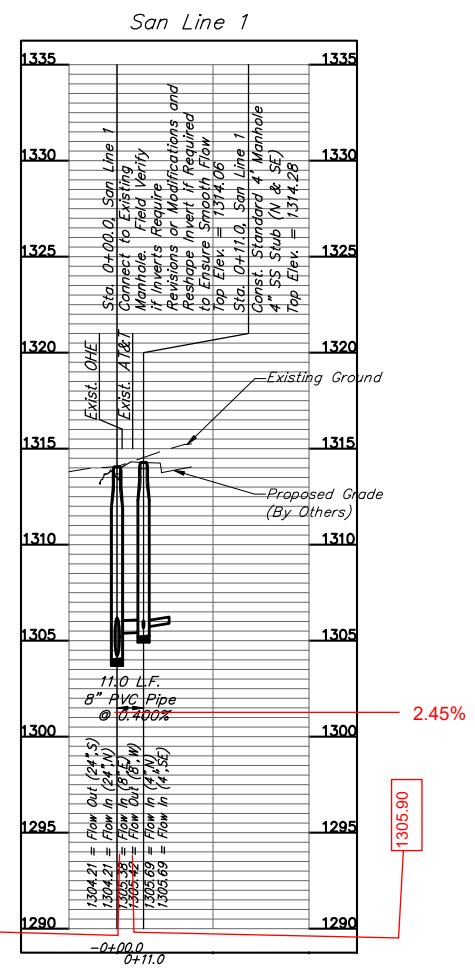
All trench and manhole excavation areas from
Sta. 0+00 to Sta 0+11.0, Line 1 shall be
backfilled with sand. The sand backfill shall be
within two feet of existing grade and shall be
water-jetted and vibrated during backfilling. All
costs shall be paid for as L.F. "Fill, Sand
(Flushed & Vibrated)".



SEWER SERVICE TABLE

NUMBER	TYPE	LOCATION			FOR INFORMATION ONLY		
		LOT NO.	BLOCK NO.	LINE NO.	STATION/DIRECTION	APPROXIMATE LENGTH 4" PIPE	
					VERTICAL	HORIZONTAL	
1	4" Stub	1	2	1	0+11.0/Lt.	4.6'	18.0'
2	4" Stub	2	2	1	0+11.0/Rt.	4.1'	16.4'

NOTE: Vertical Riser Pipe shall be extended to 2' minimum above ground water elevation and 4' maximum below proposed ground elevation.



NOTE:
SS Line 1 - Stab Depth Measurements,
Flowlines and % Slope of Pipe were Revised
on 1-17-2024.
Larry Powell - Baughman Co.

BAUGHMAN COMPANY

315 Ellis St.
Wichita, KS 67211
316-262-7271
BaughmanCo.com

NORTH INDUSTRIAL PARK
2ND ADDITION - LOTS 1 - 3

SS Line 1
Sta. 0+00.0
To Sta. 0+11.0

Sanitary Sewer
Improvements

PROJECT NUMBER:
21-01-E824

DESIGN: SRS DRAWN: SRS

DATE: August 23, 2021

SHEET **2** OF **6**

