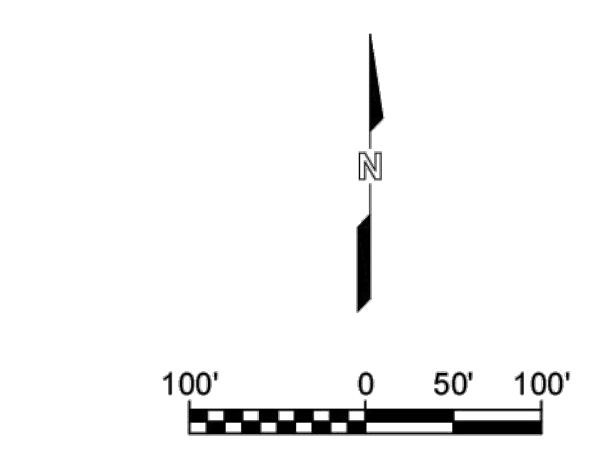
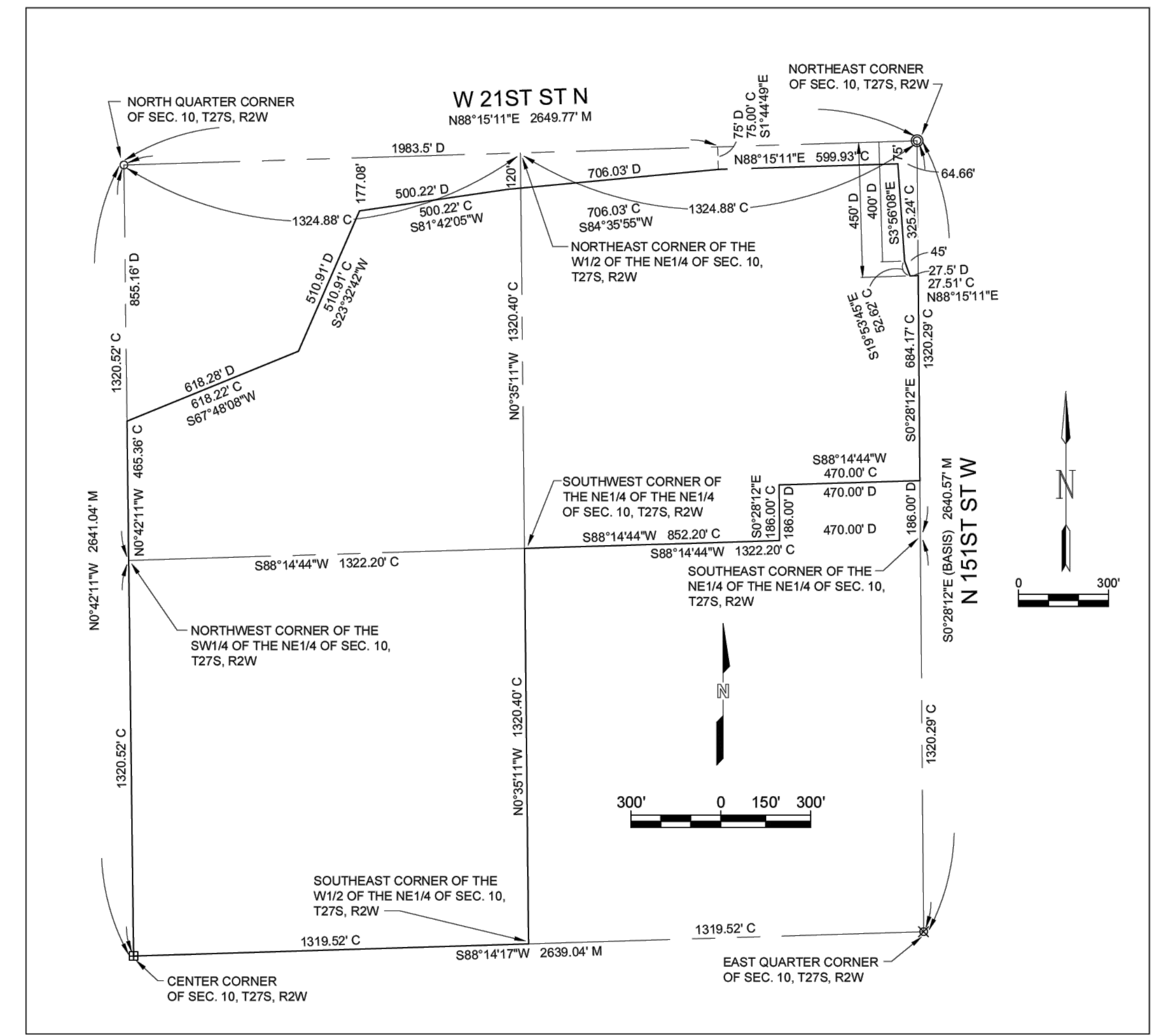


# AREA 151

## Wichita, Sedgwick County, Kansas



(BASIS) = Basis of Bearings = Kansas Coordinate System of 1983 South Zone Grid Bearing  
 M = Measured  
 C = Calculated  
 D = Described  
 B.S.L. = Building Setback Line  
 C.A.C. = Complete Access Control

- SURVEY MARKER LEGEND**
- STONE (GOVERNMENT CORNER)
  - 1/2" IRON PIPE (FOUND - ORIGIN UNKNOWN)
  - ⊗ 1/2" REBAR (FOUND - ORIGIN UNKNOWN)
  - ⊙ 3/4" IRON PIPE W/CAP (FOUND - ORIGIN UNKNOWN)
  - ⊕ 1/2" REBAR W/GARVER CAP (SET)
  - BENCHMARK
  - ⊙ MONUMENT TO BE SET WITH STREET CONSTRUCTION PROJECT BY THE STREET DESIGNER

BENCHMARK #1: CHISELED SQUARE WITH DIVOT ON THE NORTHEAST CORNER OF A CULTVERT HEADWALL ON THE SOUTH SIDE OF 21ST STREET NORTH, 668 FEET WEST OF 151ST STREET WEST  
 ELEVATION = 1368.00 (NAVD88, G18)

BENCHMARK #2: CHISELED SQUARE WITH DIVOT ON THE SOUTHWEST CORNER OF BRIDGE HEADWALL ON THE SOUTH SIDE OF 21ST STREET NORTH, 1252 FEET EAST OF 151ST STREET WEST  
 ELEVATION = 1365.98 (NAVD88, G18)

FOR INFORMATION ONLY



GARVER  
 1995 MIDFIELD RD.  
 WICHITA, KS 67209  
 (316) 264-8008  
 www.GarverUSA.com

DWG FILE: 22S04021 SURVEY BASE  
 PROJECT NO. 22S04021  
 MARCH 17, 2023