

WATER MAIN EXTENSION

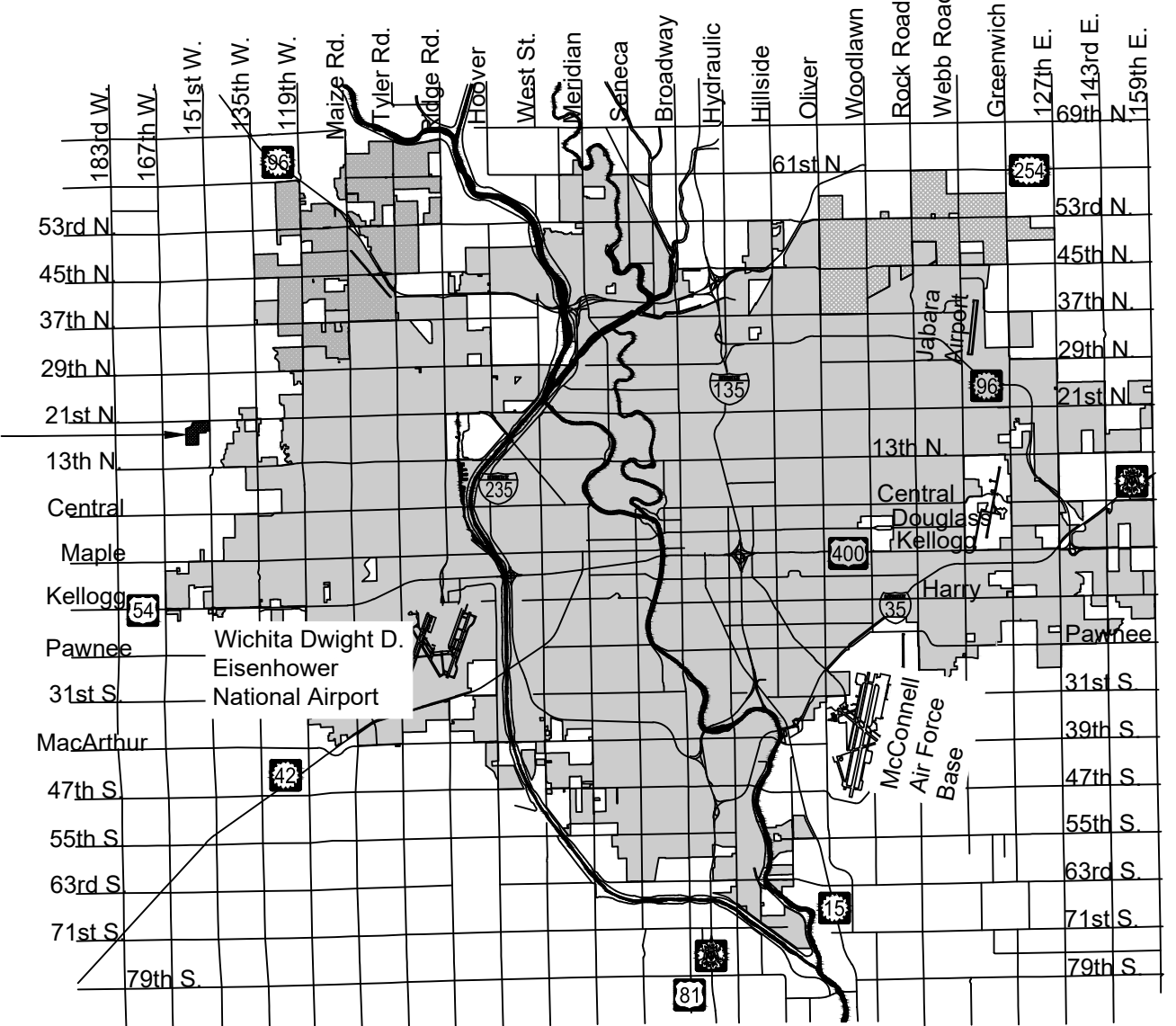
to serve

AREA 151 ADDITION

CITY OF WICHITA, KANSAS

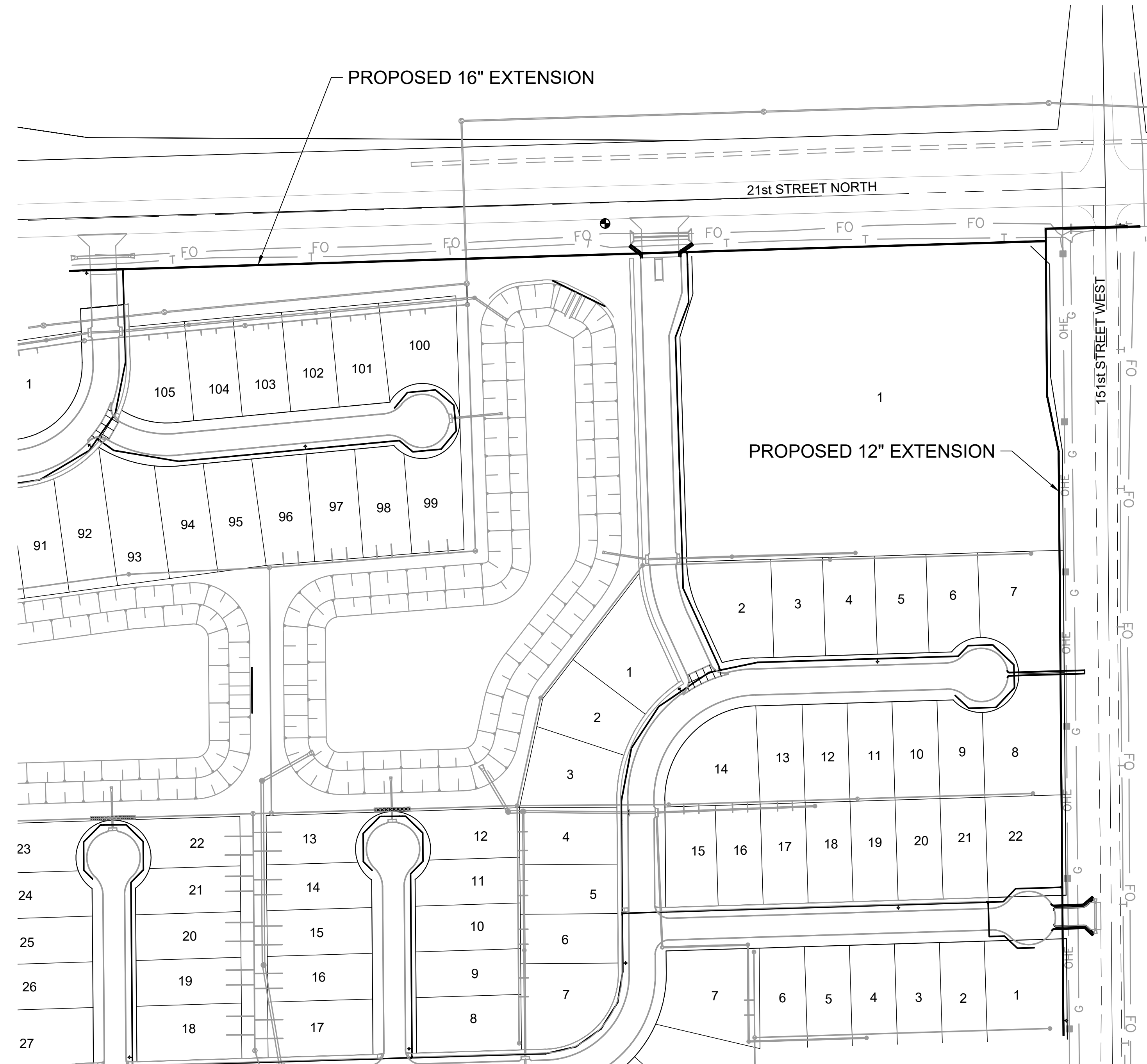
Paul Gunzelman, P.E., City Engineer
 Project Number: 448-2023-015594
 Org Code Number: 54250122
 Munis Number: W2025

PROJECT LOCATION



Vicinity Map

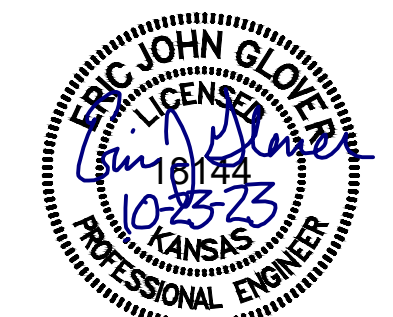
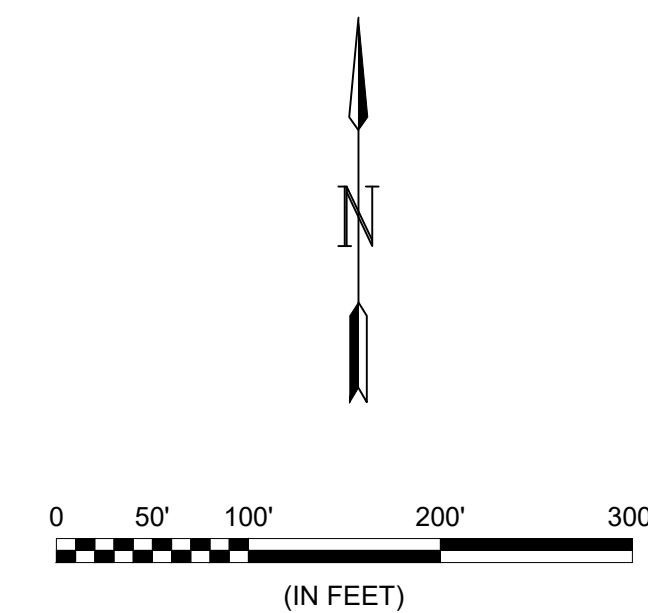
Sheet Number	Sheet Title
1	COVERSHEET
2	GENERAL NOTES
3	Water Assembly Details-Table
4	WATER MAIN-16 (1 of 2)
5	WATER MAIN-16 (2 of 2)
6	WATER MAIN-12
7	COORDINATE MAP WATER-MAIN EXT
8	SEEDING
9	EC PLAN EXTERNAL WATER
10	EC1-CURB INLET & CONST. ENT.
11	EC2-SILT FENCE
12	EC3-DITCH CHECK
13	EC4-STREET IMPROVEMENTS
14	EC5-SUBDIVISION DEVELOPMENT



Benchmarks

BENCHMARK #1:
 CHISELED SQUARE WITH DIVOT ON THE NORTHEAST CORNER OF
 A CULVERT HEADWALL ON THE SOUTH SIDE OF 21ST STREET
 NORTH, 668 FEET WEST OF 151ST STREET WEST
 ELEVATION = 1368.00 (NAVD88, G18)

BENCHMARK #2:
 CHISELED SQUARE WITH DIVOT ON SOUTHWEST CORNER OF
 BRIDGE HEADWALL ON THE SOUTH SIDE OF 21ST STREET NORTH,
 1252 FEET EAST OF 151ST STREET WEST
 ELEVATION = 1365.98 (NAVD88, G18)



DEC. 2023

PLANS PREPARED BY

PLAN SET REVIEWED BY GARVER
Chunshu Bohm 8/29/2023
 SIGNATURE DATE

NOTE: All coordinates listed are modified NAD83 Kansas State Plane Zone South unless otherwise noted. To convert listed coordinates to NAD83 Kansas State Plane Zone South coordinates multiply the northing and easting by the project scale factor of 0.99994194. Elevation datum is NAVD88 Geoid 12B unless otherwise noted.



GARVER
 1995 Midfield Road
 Wichita, KS 67209
 (316) 264-8008
 www.GarverUSA.com
 Project No. 22T41002