



© 2023 GARVER, LLC
 THIS DOCUMENT, ALONG WITH THE IDEAS AND DESIGNS CONVEYED HEREIN, SHALL BE CONSIDERED INSTRUMENTS OF PROFESSIONAL SERVICE AND ARE PROPERTY OF GARVER, LLC. ANY USE, REPRODUCTION, OR DISTRIBUTION OF THIS DOCUMENT, ALONG WITH THE IDEAS AND DESIGN CONTAINED HEREIN, IS PROHIBITED UNLESS AUTHORIZED IN WRITING BY GARVER, LLC OR EXPLICITLY ALLOWED IN THE GOVERNING PROFESSIONAL SERVICES AGREEMENT FOR THIS WORK.

1995 Midfield Road
 Wichita, KS 67209
 (316) 264-8008

REV.	DATE	DESCRIPTION	BY



CITY OF WICHITA
 WICHITA, KANSAS

AREA 151
 STORM WATER DRAIN - PHASE 1

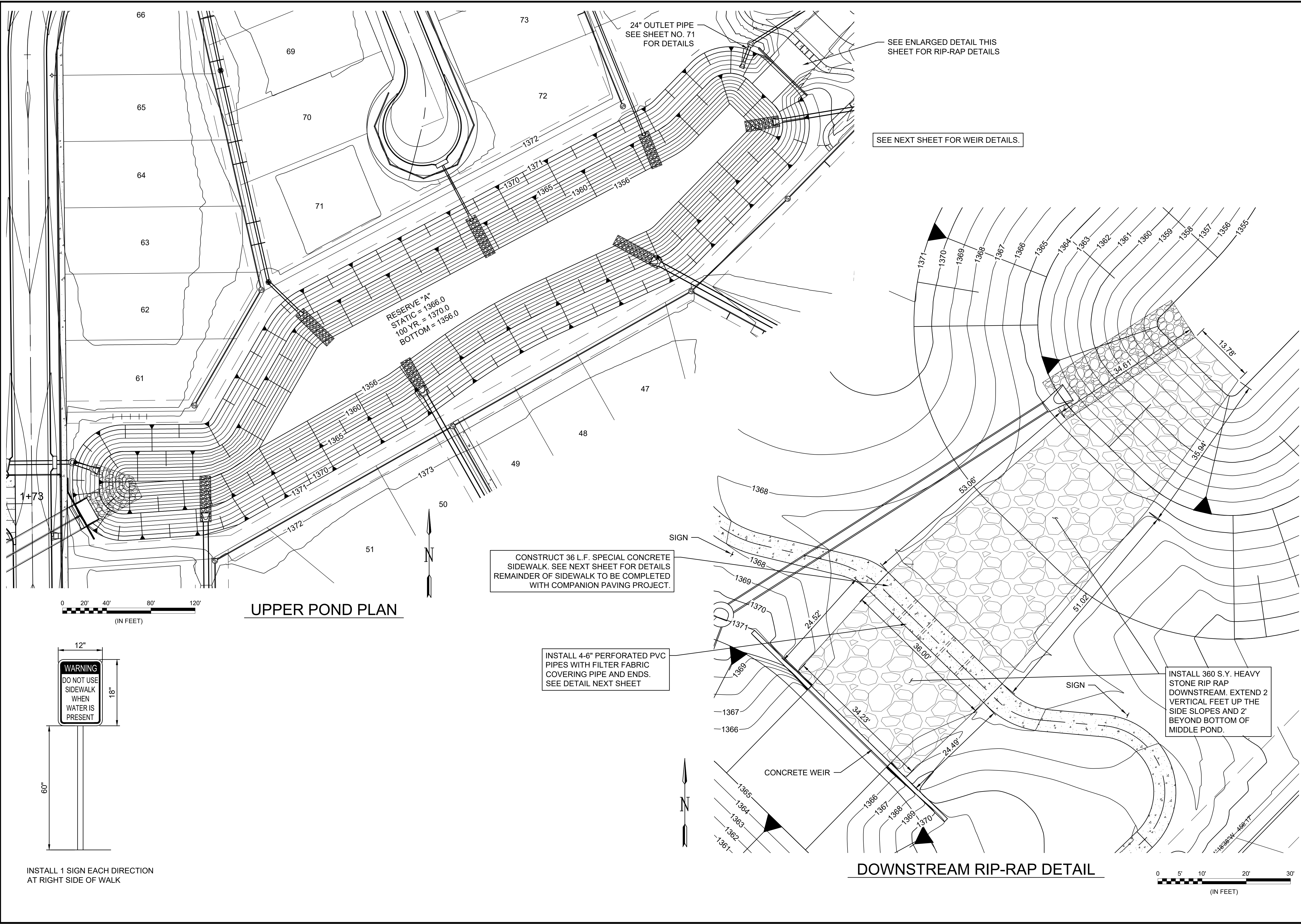
UPPER POND DETAILS

JOB NO.: 22T41002
 DATE: DEC 2023
 DESIGNED BY: .
 DRAWN BY: .

BAR IS ONE INCH ON ORIGINAL DRAWING
 0 5' 10' 20' 30'
 (IN FEET)

DRAWING NUMBER

SHEET NUMBER **20** OF **93**



UPPER POND PLAN

DOWNSTREAM RIP-RAP DETAIL

CONSTRUCT 36 L.F. SPECIAL CONCRETE SIDEWALK. SEE NEXT SHEET FOR DETAILS. REMAINDER OF SIDEWALK TO BE COMPLETED WITH COMPANION PAVING PROJECT.

INSTALL 4-6" PERFORATED PVC PIPES WITH FILTER FABRIC COVERING PIPE AND ENDS. SEE DETAIL NEXT SHEET

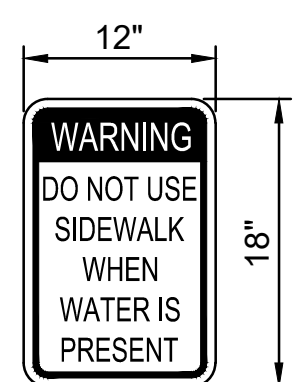
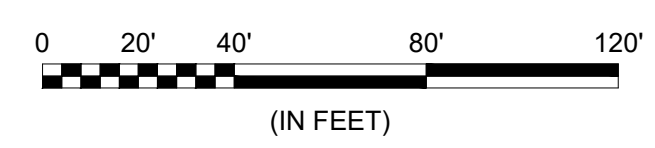
INSTALL 360 S.Y. HEAVY STONE RIP RAP DOWNSTREAM. EXTEND 2 VERTICAL FEET UP THE SIDE SLOPES AND 2' BEYOND BOTTOM OF MIDDLE POND.

RESERVE "A"
 STATIC = 1366.0
 100 YR = 1370.0
 BOTTOM = 1356.0

24" OUTLET PIPE
 SEE SHEET NO. 71
 FOR DETAILS

SEE ENLARGED DETAIL THIS SHEET FOR RIP-RAP DETAILS

SEE NEXT SHEET FOR WEIR DETAILS.



INSTALL 1 SIGN EACH DIRECTION AT RIGHT SIDE OF WALK



File: L:\2022\22T41002 - Area 151 - AdditionalDrawings\C3D\SWS SHEETS\Upper Pond Details.dwg Last Save: 10/24/2023 4:38 PM Last saved by: DRStandrich
 Last plotted by: Standrich, Daryl R Plot Style: --- Plot Scale: 1:2.5849 Plot Date: 12/1/2023 7:38 AM Plotter Used: None