



© 2023 GARVER, LLC  
 THIS DOCUMENT, ALONG WITH THE IDEAS AND DESIGNS CONVEYED HEREIN, SHALL BE CONSIDERED INSTRUMENTS OF PROFESSIONAL SERVICE AND ARE PROPERTY OF GARVER, LLC. ANY USE, REPRODUCTION, OR DISTRIBUTION OF THIS DOCUMENT, ALONG WITH THE IDEAS AND DESIGN CONTAINED HEREIN, IS PROHIBITED UNLESS AUTHORIZED IN WRITING BY GARVER, LLC OR EXPLICITLY ALLOWED IN THE GOVERNING PROFESSIONAL SERVICES AGREEMENT FOR THIS WORK.

1995 Midfield Road  
 Wichita, KS 67209  
 (316) 264-8008

REV.	DATE	DESCRIPTION	BY



CITY OF WICHITA  
 WICHITA, KANSAS  
 AREA 151  
 STORM WATER DRAIN - PHASE 1

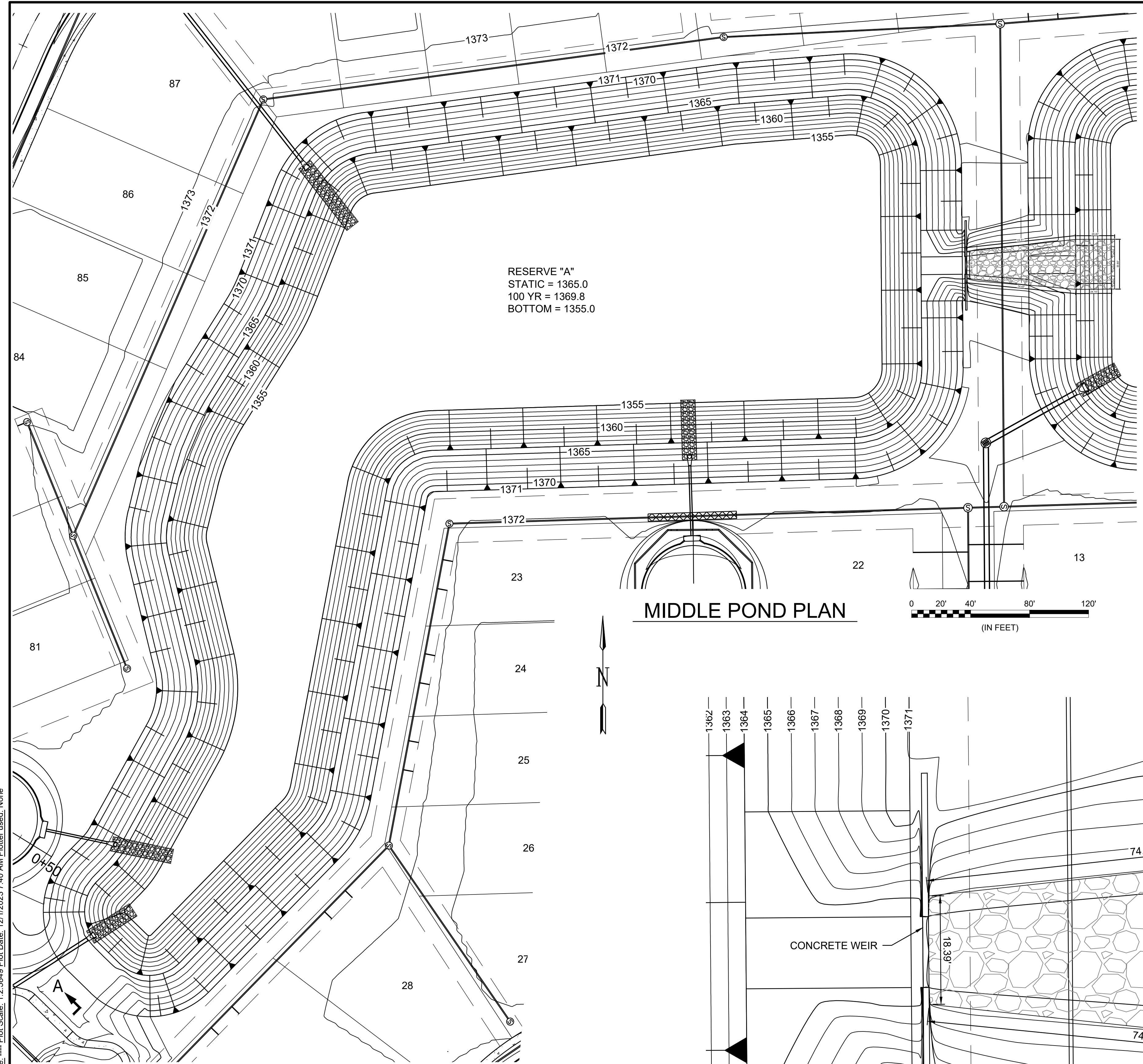
MIDDLE POND DETAILS

JOB NO.: 22T41002  
 DATE: DEC 2023  
 DESIGNED BY: .  
 DRAWN BY: .

BAR IS ONE INCH ON ORIGINAL DRAWING  
 IF NOT ONE INCH ON THIS SHEET, ADJUST SCALES ACCORDINGLY.

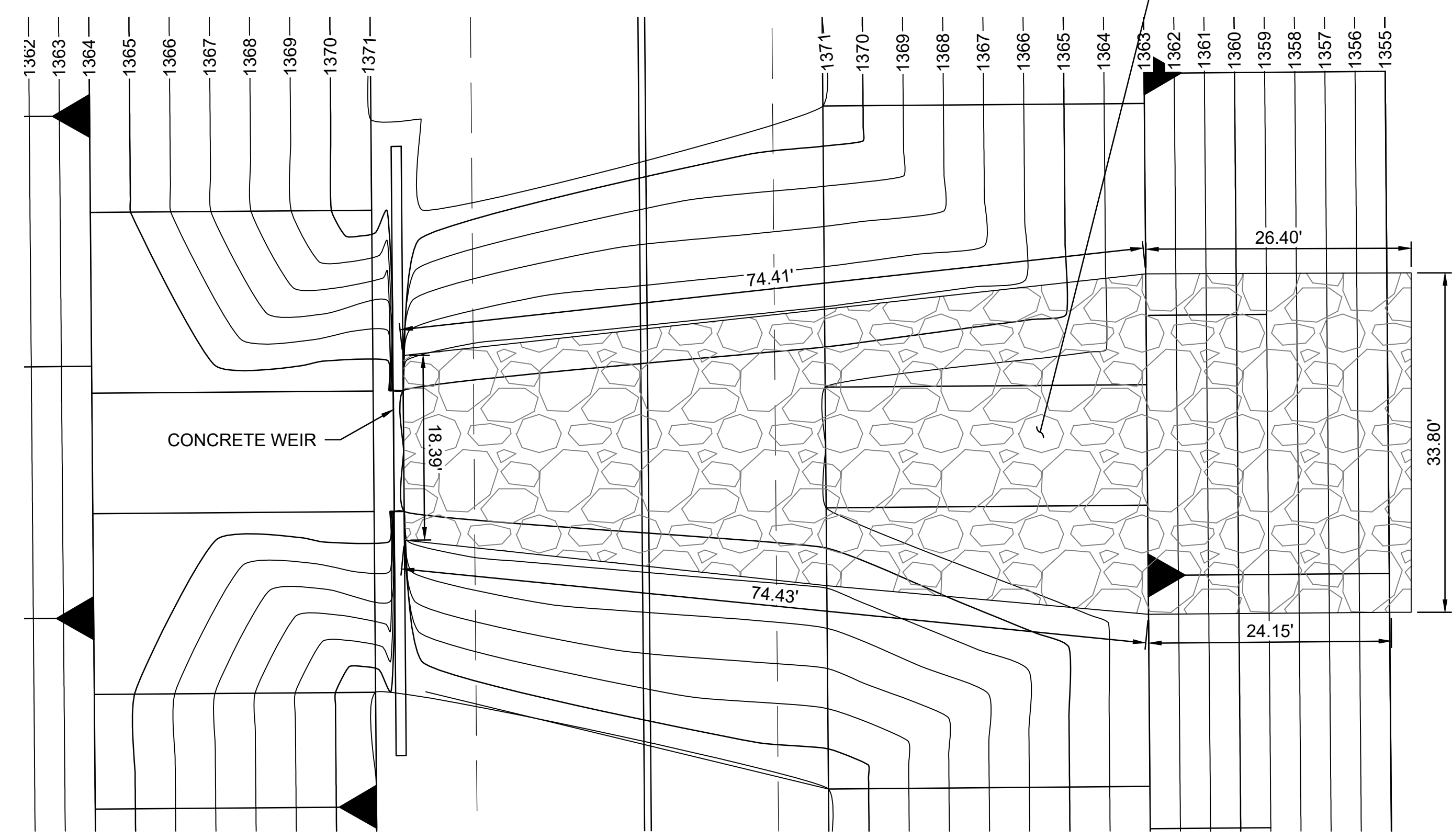
DRAWING NUMBER

SHEET NUMBER **22** OF **93**



MIDDLE POND PLAN

INSTALL 315 S.Y. HEAVY STONE RIP RAP DOWNSTREAM. EXTEND 2 VERTICAL FEET UP THE SLOPES AND 2 HORIZONTAL FEET INTO BOTTOM OF POND.



DOWNSTREAM RIP-RAP DETAIL

SEE NEXT SHEET FOR WEIR DETAILS.

File: L:\2022\22T41002 - Area 151 - Additional Drawings\C3D\SWS SHEETS\Middle Pond Details.dwg, Last Save: 10/24/2023 6:20 AM, Last saved by: DRSlandrich, Last plotted by: Standrich, Plot Style: ---, Plot Scale: 1:2.5849, Plot Date: 12/1/2023 7:40 AM, Plotter Used: None