



© 2023 GARVER, LLC
 THIS DOCUMENT, ALONG WITH THE IDEAS AND DESIGNS CONVEYED HEREIN, SHALL BE CONSIDERED INSTRUMENTS OF PROFESSIONAL SERVICE AND ARE PROPERTY OF GARVER, LLC. ANY USE, REPRODUCTION, OR DISTRIBUTION OF THIS DOCUMENT, ALONG WITH THE IDEAS AND DESIGN CONTAINED HEREIN, IS PROHIBITED UNLESS AUTHORIZED IN WRITING BY GARVER, LLC OR EXPLICITLY ALLOWED IN THE GOVERNING PROFESSIONAL SERVICES AGREEMENT FOR THIS WORK.

1995 Midfield Road
 Wichita, KS 67209
 (316) 264-8008

REV.	DATE	DESCRIPTION	BY



CITY OF WICHITA
 WICHITA, KANSAS
 AREA 151
 STORM WATER DRAIN - PHASE 1

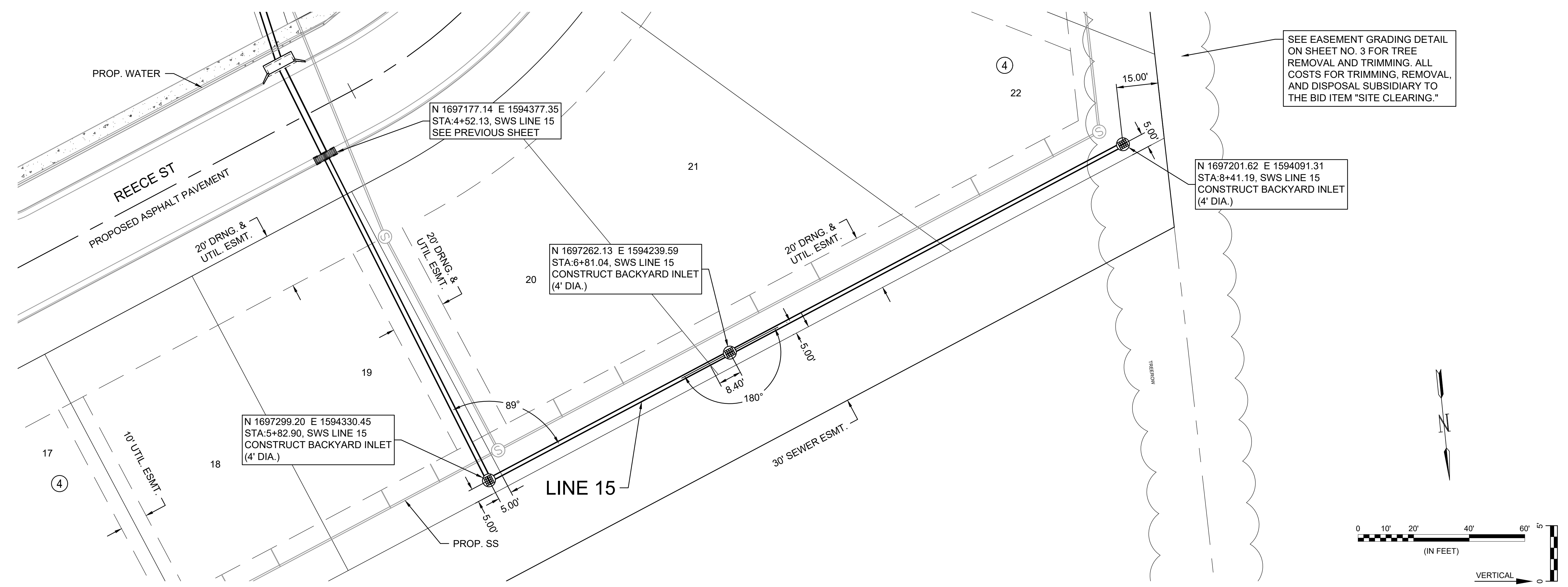
SWS LINE 15
 (2 of 2)

JOB NO.: 22T41002
 DATE: DEC 2023
 DESIGNED BY: EJG
 DRAWN BY: DRS

BAR IS ONE INCH ON ORIGINAL DRAWING
 IF NOT ONE INCH ON THIS SHEET, ADJUST SCALES ACCORDINGLY.

DRAWING NUMBER

SHEET NUMBER **68** OF **93**

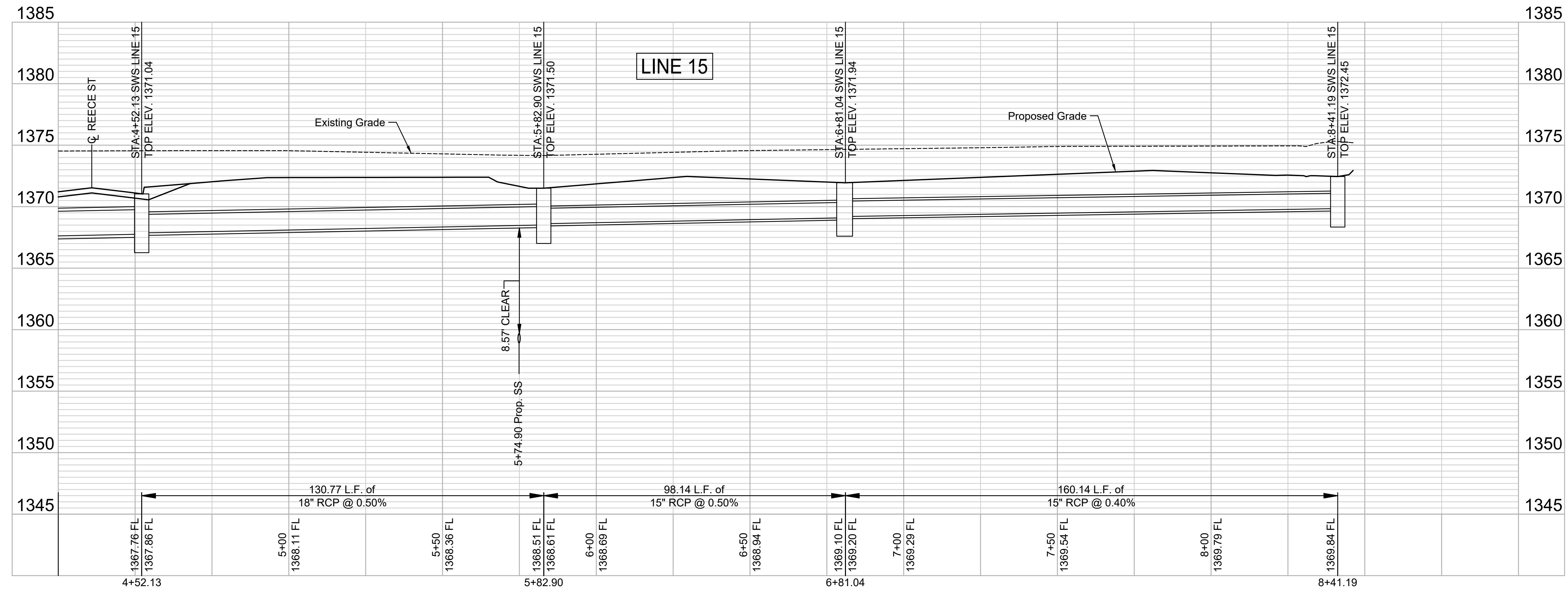
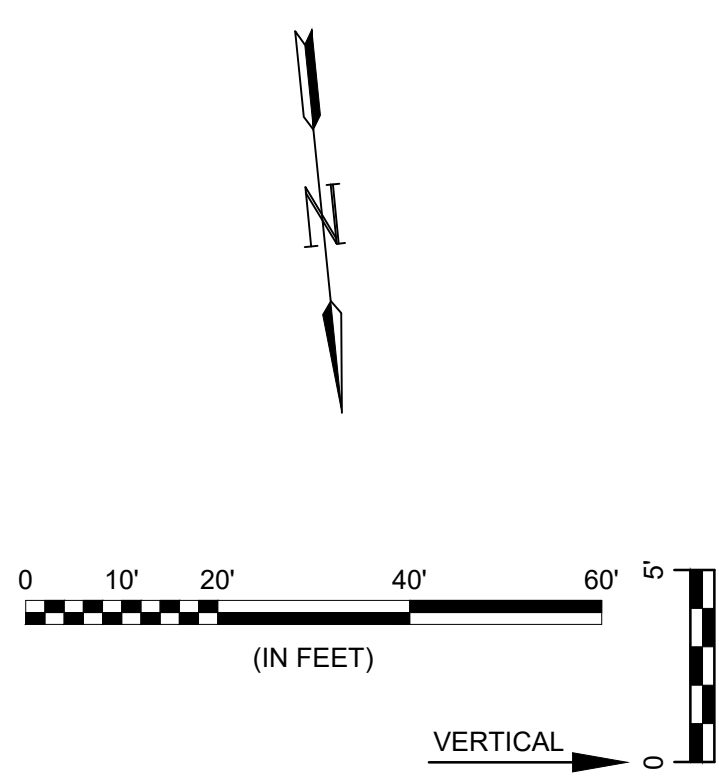


SEE EASEMENT GRADING DETAIL ON SHEET NO. 3 FOR TREE REMOVAL AND TRIMMING. ALL COSTS FOR TRIMMING, REMOVAL, AND DISPOSAL SUBSIDIARY TO THE BID ITEM "SITE CLEARING."

N 1697201.62 E 1594091.31
 STA:8+41.19, SWS LINE 15
 CONSTRUCT BACKYARD INLET (4' DIA.)

N 1697262.13 E 1594239.59
 STA:6+81.04, SWS LINE 15
 CONSTRUCT BACKYARD INLET (4' DIA.)

N 1697299.20 E 1594330.45
 STA:5+82.90, SWS LINE 15
 CONSTRUCT BACKYARD INLET (4' DIA.)



File: L:\2022\22T41002 - Area 151 - Additional Drawings\C3D\SWS SHEETS\SWS LINE 15-2.dwg Last Save: 9/26/2023 8:58 AM Last saved by: DRStandrich
 Last plotted by: Standrich, Darryl R. Plot Style: --- Plot Scale: 1:2.5849 Plot Date: 12/1/2023 8:04 AM Plotter used: None