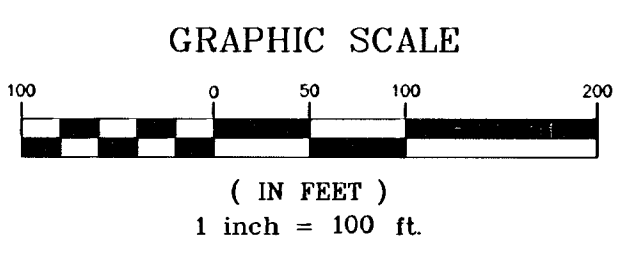
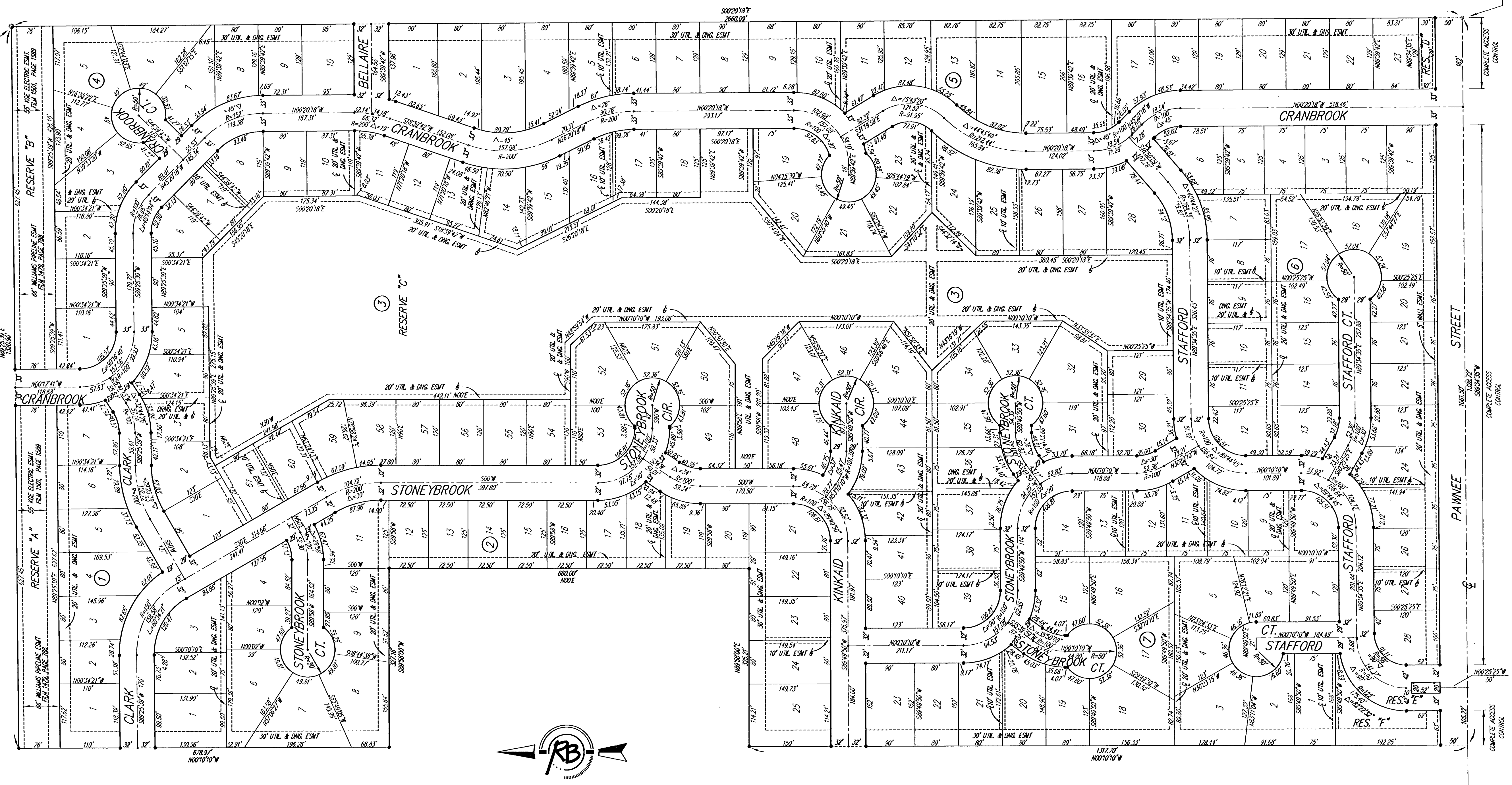


# BRENTWOOD SOUTH ADDITION

WICHITA, SEDGWICK COUNTY, KANSAS



BLOCK	LOT NO.	ELEVATION (M.G.V.D.)
3	Lots 1-20, 47 Lots 50-61	1369

- △ = CITY OF WICHITA CONTROL THUMB (FOUND)
- = 1/2" REBAR W/CARRIER CAP (FOUND)
- = 5/8" REBAR (FOUND)
- = 1/2" REBAR W/SFB CAP (SET)

BENCH MARK #1: USGS BRASS PLUG 28' S. & 530' W. OF CENTERLINE INTERSECTION OF CLARK & PAWNEE. ELEV=1308.25 MVD

BENCH MARK #2: CITY OF WICHITA STD. DISC 20.8' W. & 54.5' S. OF CENTERLINE INTERSECTION DALTON & PAWNEE. ELEV=1379.60

Please contact Western Resources (or its successor) Electric Transmission Engineering Department (currently 785-575-8219) before conducting any proposed construction activities that could place people, equipment, or facilities within Western Resources' easement, shown on this plat, designated as Film 1501, Page 1589, dated December 29, 1994.

**Brentwood South Addition  
FINAL PLAT  
WICHITA, KANSAS**

**Ruggles & Bohm, P.A.**  
Engineering, Surveying, Land Planning

924 North Main (316) 264-8008  
Wichita, Kansas 67203 (316) 264-4621 fax  
www.rbkansas.com E-mail: info@rbkansas.com

<p>DRAWING FILE Sanitary Sewer {Plot}</p>	<p>PROJECT NUMBER 468-84071</p>	<p>DESIGN KWL</p> <p>DRAWN RLS</p> <p>REVIEW</p> <p>UTILITY</p> <p>DATE Sept. 13, 2006</p>	<p>SHEET 14 OF 14</p>
---	-------------------------------------	--	-----------------------------------

18-13-03-00