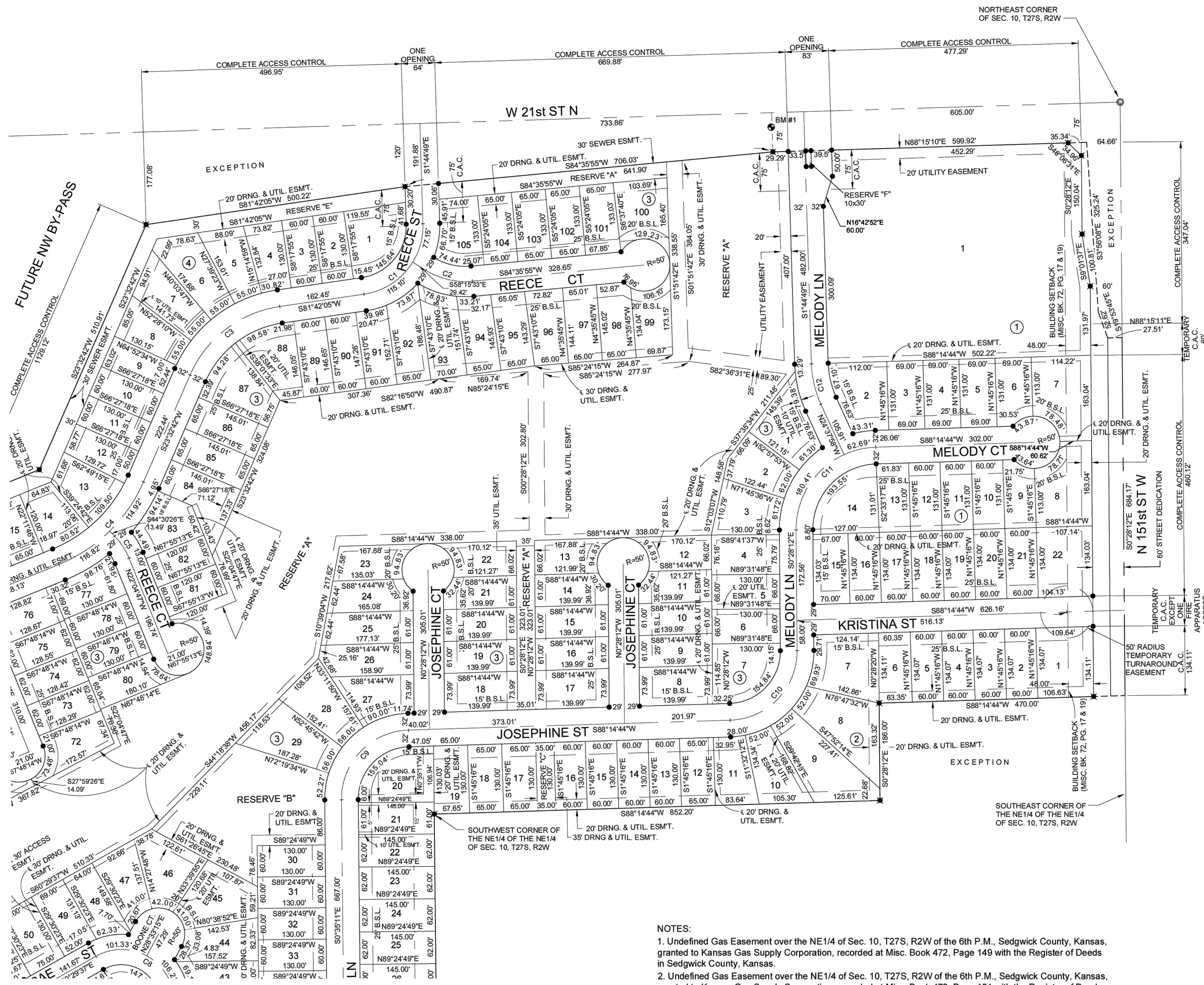


AREA 151

Wichita, Sedgwick County, Kansas



BENCHMARK #1: CHISELED SQUARE WITH DIVOT ON THE NORTHEAST CORNER OF A CULVERT HEADWALL ON THE SOUTH SIDE OF 21ST STREET NORTH, 668 FEET WEST OF 151ST STREET WEST
ELEVATION = 1368.00 (NAVD88, G18)

BENCHMARK #2: CHISELED SQUARE WITH DIVOT ON THE SOUTHWEST CORNER OF BRIDGE HEADWALL ON THE SOUTH SIDE OF 21ST STREET NORTH, 1252 FEET EAST OF 151ST STREET WEST
ELEVATION = 1365.98 (NAVD88, G18)

(BASIS) = Basis of Bearings = Kansas Coordinate System of 1983 South Zone Grid Bearing

M = Measured
C = Calculated
D = Described
B.S.L. = Building Setback Line
C.A.C. = Complete Access Control

SURVEY MARKER LEGEND

- ⊕ STONE (GOVERNMENT CORNER)
- 1/2" IRON PIPE (FOUND - ORIGIN UNKNOWN)
- 1/2" REBAR (FOUND - ORIGIN UNKNOWN)
- ⊗ 3/4" IRON PIPE W/CAP (FOUND - ORIGIN UNKNOWN)
- ⊗ 1/2" REBAR W/GARVER CAP (SET)
- ⊕ BENCHMARK
- MONUMENT TO BE SET WITH STREET CONSTRUCTION PROJECT BY THE STREET DESIGNER

MINIMUM BUILDING PAD ELEVATION FOR LOWEST OPENING INTO STRUCTURES FOR ALL LOTS EXCEPT THOSE LISTED BELOW = 1372.5 (NAVD88)

THOSE LOTS EXEMPTED FROM A MINIMUM PAD ELEVATION ARE:
LOTS 5 - 10, BLOCK 1
LOTS 20 - 22, BLOCK 1
AND LOTS 1 - 3, BLOCK 2

NOTES:

- Undefined Gas Easement over the NE1/4 of Sec. 10, T27S, R2W of the 6th P.M., Sedgwick County, Kansas, granted to Kansas Gas Supply Corporation, recorded at Misc. Book 472, Page 149 with the Register of Deeds in Sedgwick County, Kansas.
- Undefined Gas Easement over the NE1/4 of Sec. 10, T27S, R2W of the 6th P.M., Sedgwick County, Kansas, granted to Kansas Gas Supply Corporation, recorded at Misc. Book 472, Page 151 with the Register of Deeds in Sedgwick County, Kansas.
- All interior side-yard building setbacks will be 5 feet.

FOR INFORMATION ONLY

