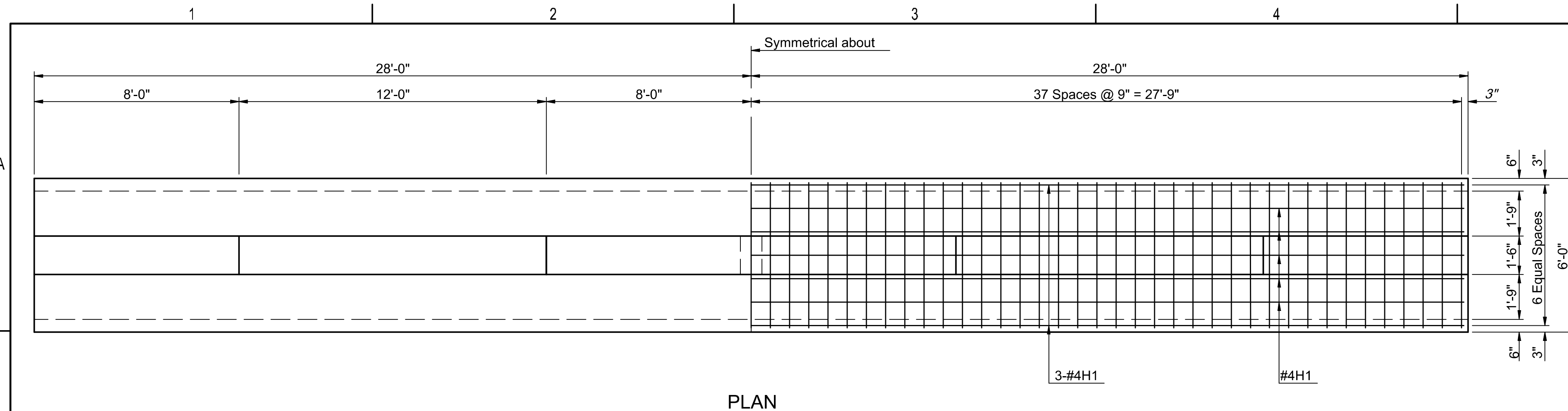
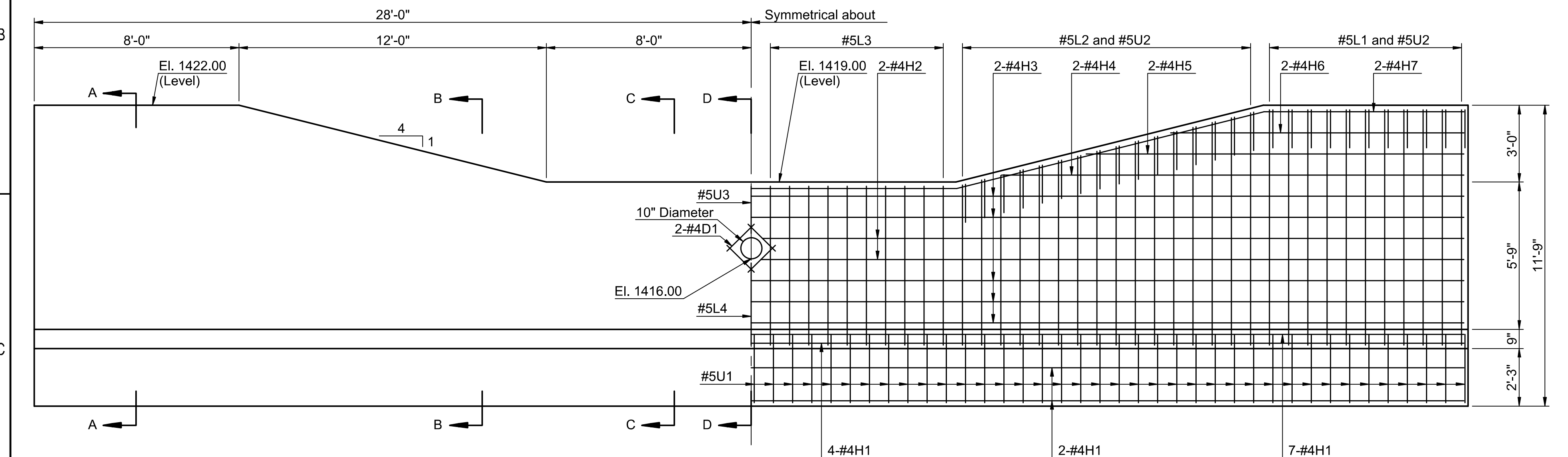


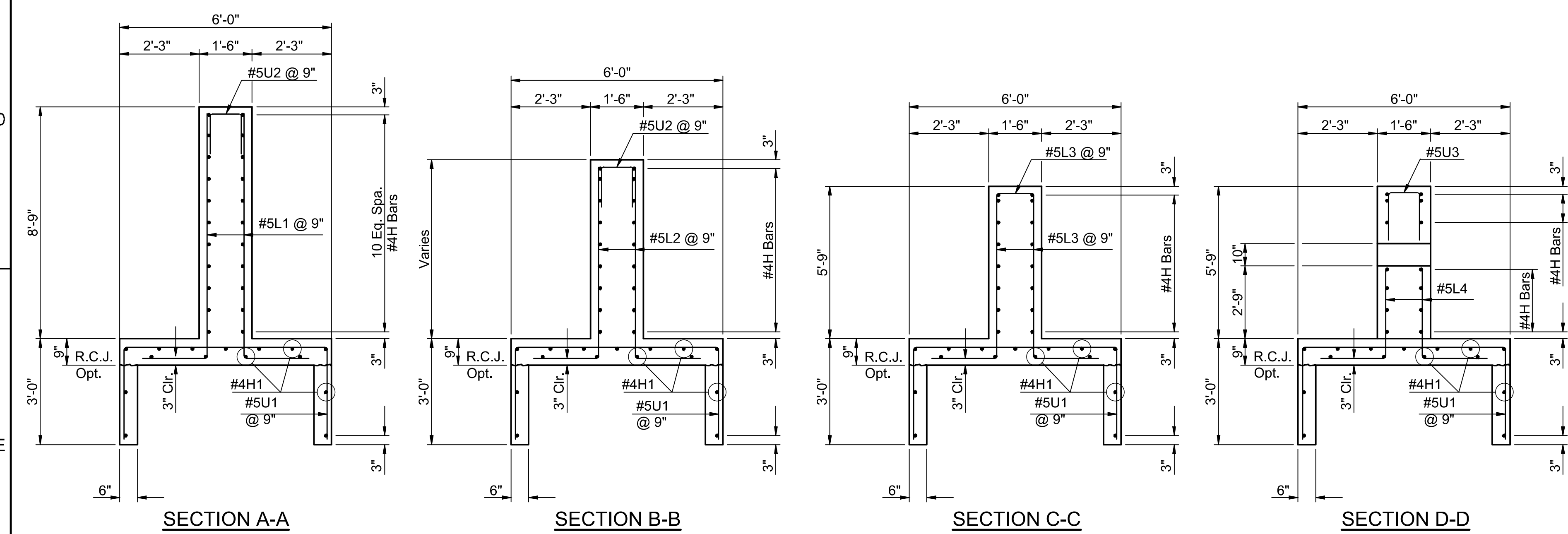
SAVED 1/4/2024 7:10:21 AM BY BILL.SEXSON
 PLOTTED 1/9/2024 12:38:24 PM BY BILL.SEXSON
 U:\WICHITA-CIVIL\2021\210975\003\PEC\DRAWINGS\21-210975-003-CU501 WEIR DETAILS.DWG



PLAN



ELEVATION

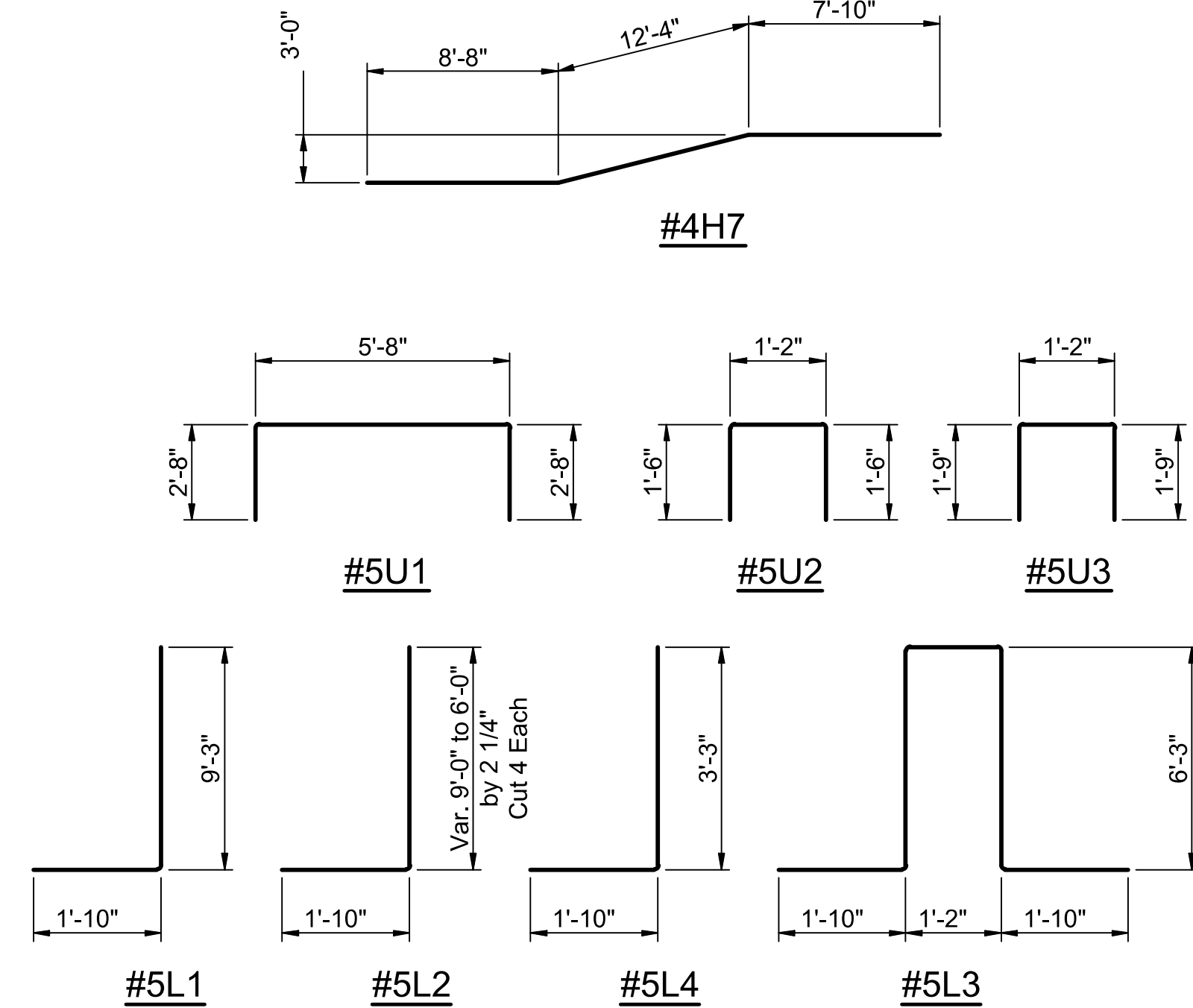


SECTION A-A

SECTION B-B

SECTION C-C

SECTION D-D



BENDING DIAGRAMS

All dimensions are out to out of bars

BILL OF MATERIALS					
REINFORCING STEEL					
Straight Bars			Bent Bars		
Mark	No.	Size	Length	Mark	Size
H1	30	#4	28'-6"	L1	22 #5
H2	8	#4	27'-3"	L2	32 #5
H3	20	#4	28'-6"	L3	20 #5
H4	4	#4	17'-7"	L4	1 #5
H5	4	#4	14'-5"	H7	4 #4
H6	4	#4	11'-3"	U1	75 #5
D1	8	#4	1'-6"	U2	54 #5
				U3	1 #5

* See Bending Diagrams

SUMMARY OF QUANTITIES #		
ITEM	QUANTITY	UNIT
Concrete	37.0	C.Y.
Reinforcing Steel	3350	Lbs.

For Information Only

GENERAL NOTES

UNIT STRESSES:
 CONCRETE: $F'_c=4,000$ P.S.I., $F_y=60,000$ P.S.I.
 $F_c=1,600$ P.S.I., $F_s=24,000$ P.S.I.

CONCRETE: Concrete shall have a minimum 28 day compressive strength of 4,000 P.S.I. Bevel all exposed edges with a 3/4" triangular moulding, unless otherwise noted.

REINFORCING STEEL: All reinforcing steel shall conform to ASTM Designation A615 Grade 60 and shall be epoxy-coated. All dimensions relative to reinforcing are to centerline of bars unless otherwise noted. Bar bending and dimensions shall be as shown and noted on the bar bending diagrams. The concrete cover for all reinforcing shall be a minimum of 2" unless otherwise noted.

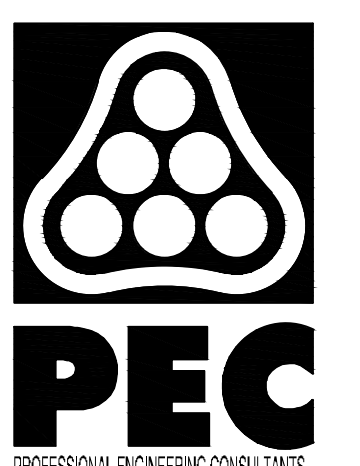
JOINTS: Construction joints shall only be formed at locations shown or as approved by the Engineer.

BASIS OF PAYMENT

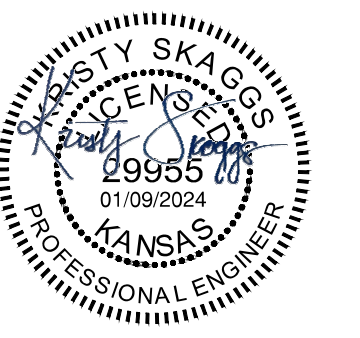
The "R.C. Weir" shall be paid as a lump sum which shall include all labor, material, excavation, concrete, reinforcing steel and all other incidentals necessary to complete the work. Quantities shown are for information only.

LEGEND:

R.C.J. = Roughened Construction Joint



PROFESSIONAL ENGINEERING CONSULTANTS
 303 SOUTH TOPEKA
 WICHITA, KS 67202
 316-262-2691 www.pec1.com



STORM WATER DRAIN #15 IMPROVEMENTS
 CYPRESS GLEN ADDITION
 PAUL GUNZELMAN, P.E.-CITY ENGINEER
 CITY OF WICHITA PROJECT NO. 458-2023-085548

Issue:	
JOB NO.	210975-003
DATE	DECEMBER 2023
PM	RMM
DESIGNED BY	KMS
DRAWN BY	BJS
CHECKED BY	BMM

WEIR DETAILS

CU501
 21 OF 21