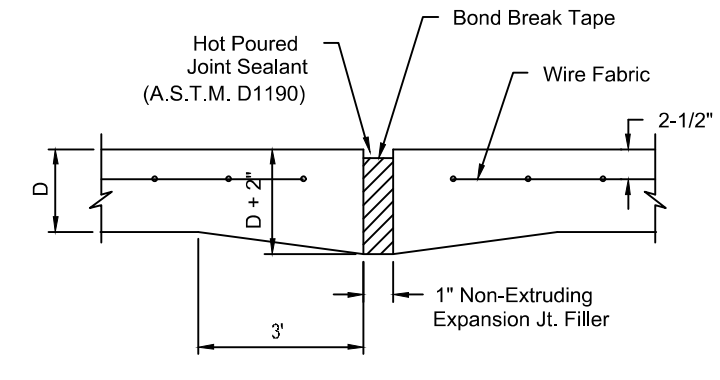


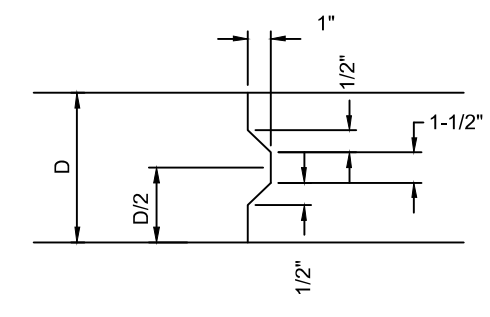
1 2 3 4 5 6

A
B
C
D
E

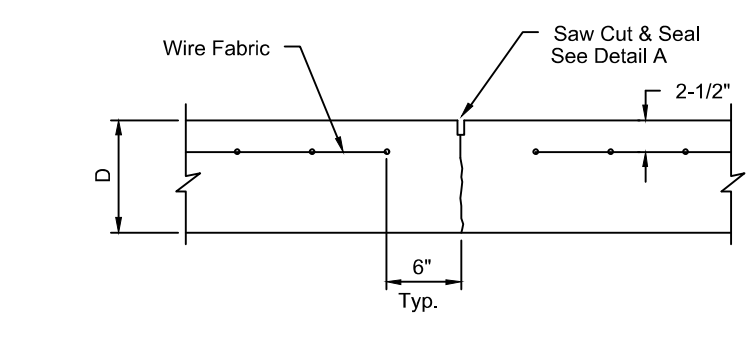


EXPANSION JOINT

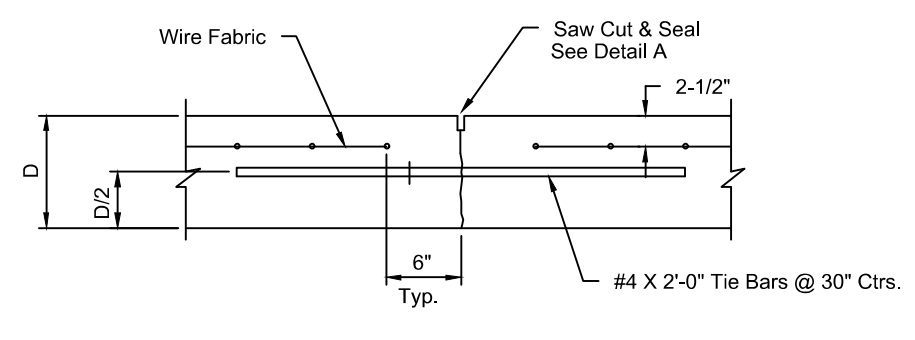
NOTE: Extra Thickness to be Subsidiary to Price of Square Yards Pavement



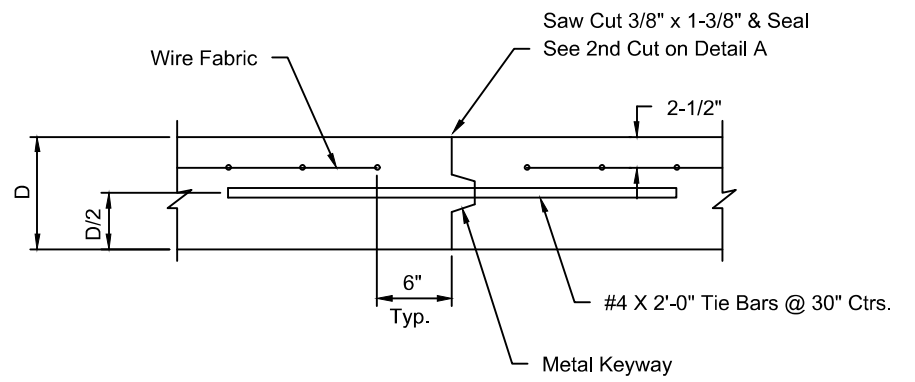
KEYWAY DETAIL



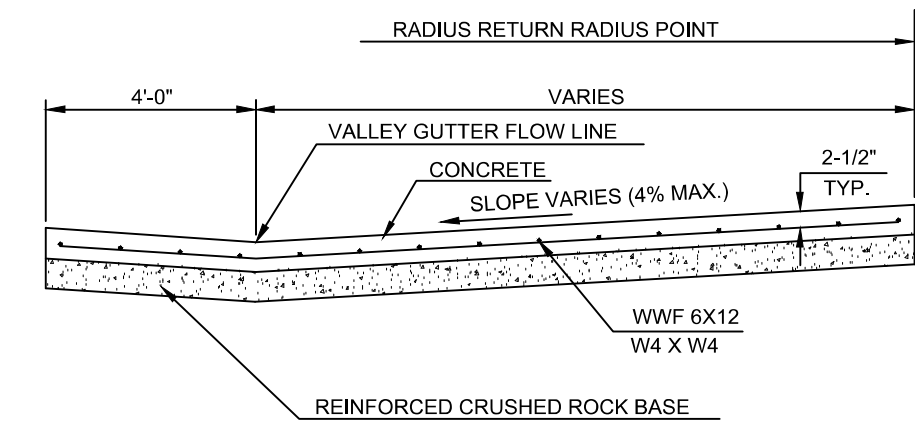
CONTRACTION JOINT DETAIL (C.J.)



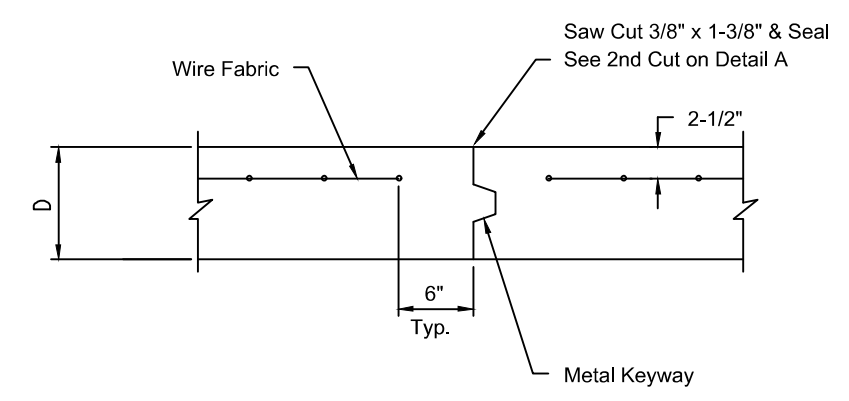
LONGITUDINAL JOINT DETAIL (L.J.)



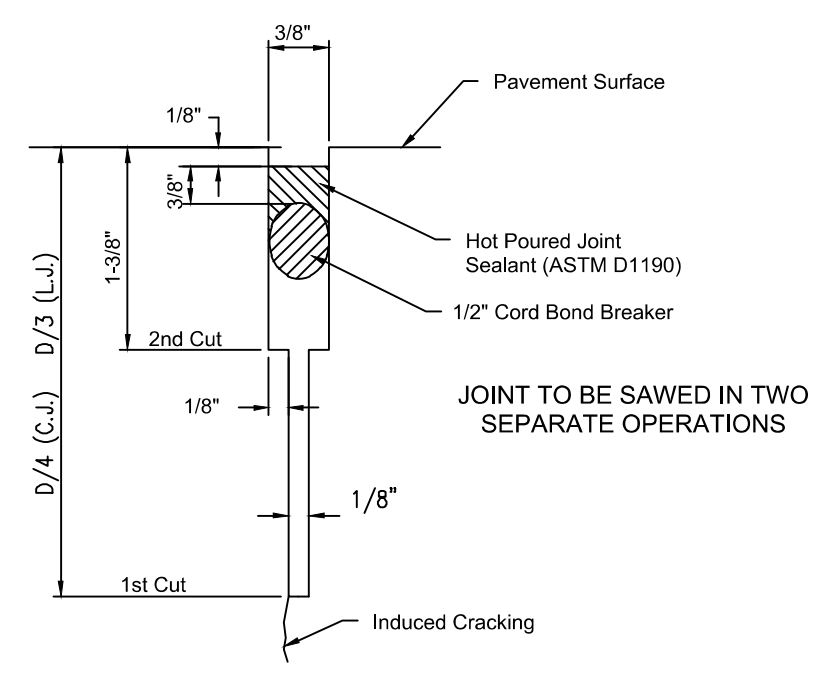
OPTIONAL LONGITUDINAL JOINT DETAIL (L.J.)



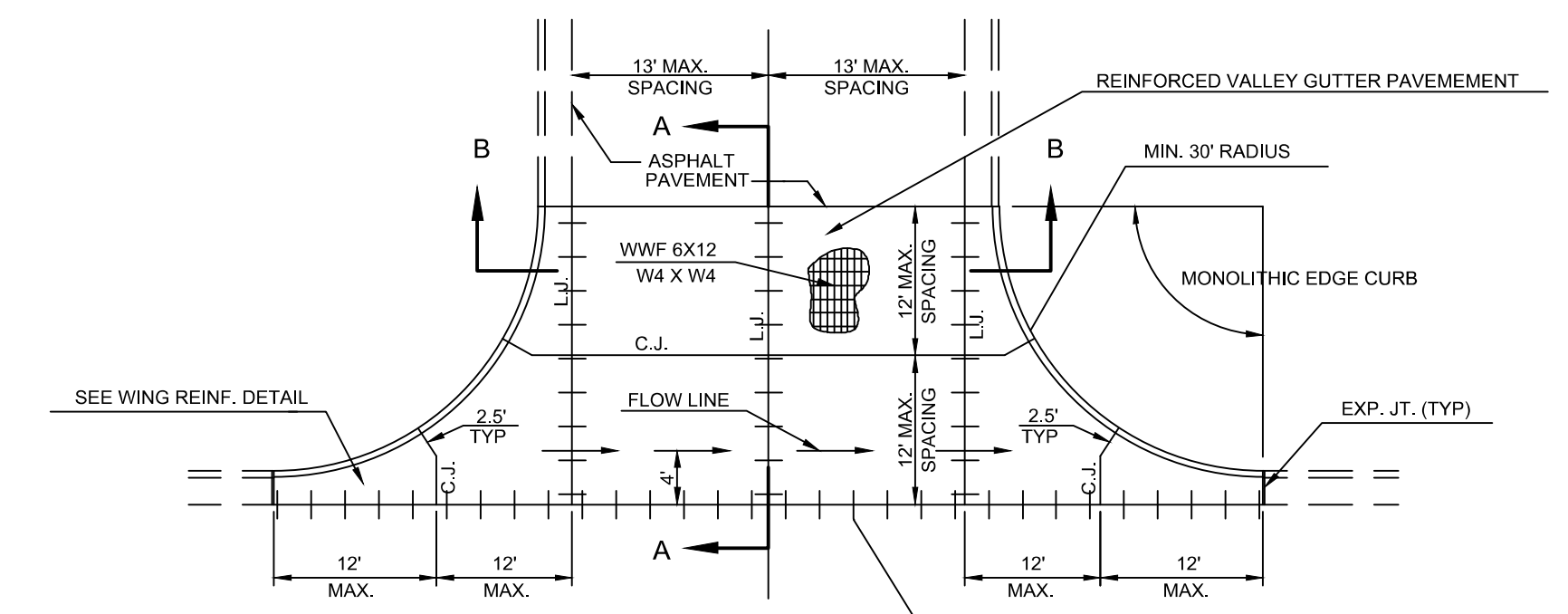
SECTION A-A



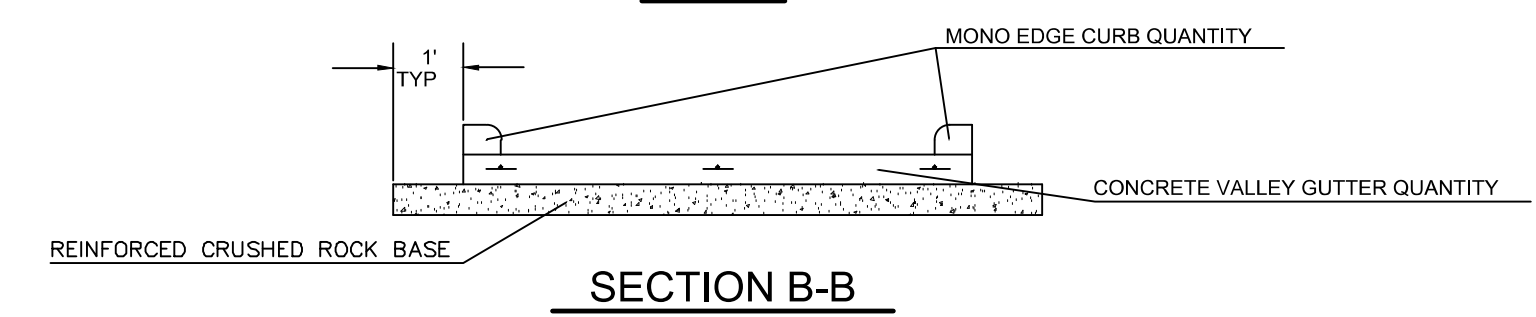
OPTIONAL CONTRACTION JOINT



SAW JOINT DETAIL (DETAIL A)

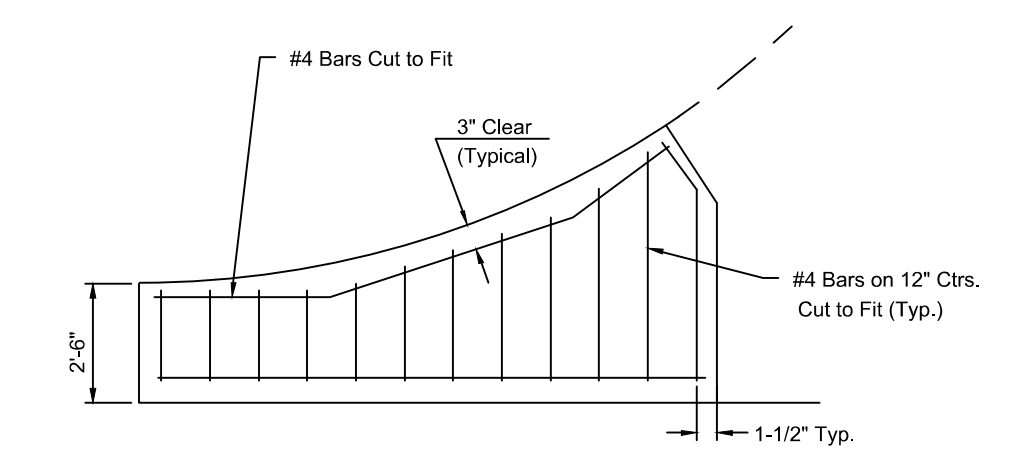


PLAN




SECTION B-B

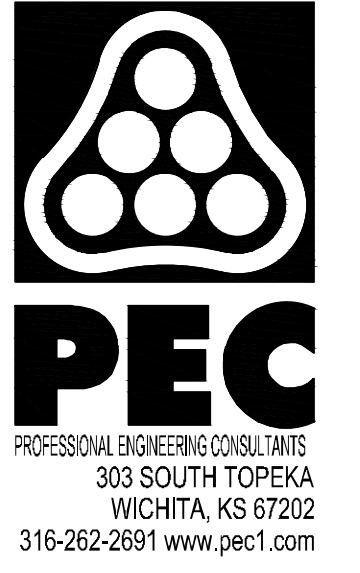
REINFORCED VALLEY GUTTER DETAIL



WING REINFORCING DETAIL

Saved: 06-06-2023 11:39:15 AM BY BILL_SEXSON
 PLOTTED: 1/9/2024 4:24:53 PM BY BILL_SEXSON
 U:\WICHITA-CIVIL\2021\210975\01\PEC\DRAWINGS\18-210975-004-CP304-VALLEY GUTTER DETAILS

REVISION MAY 2017 SECTION B-B, ROCK EXTENDED ONE FOOT BEYOND PAVEMENT	
	
VALLEY GUTTER DETAILS INTERIM CITY ENGINEER PAUL GUNZELMAN, P.E.	
PROJECT NUMBER	DCA NUMBER
CITY ENGINEER'S OFFICE	
CITY HALL - SEVENTH FLOOR	
455 NORTH MAIN STREET	
WICHITA, KANSAS 67202-1620	
(316) 268-4501	
SHEET	of
PV-109	



PAVING AND INCIDENTAL DRAINAGE IMPROVEMENTS
CYPRESS GLEN ADDITION-PHASE 1
 PAUL GUNZELMAN CITY ENGINEER
 CITY OF WICHITA PROJECT NO. 472-2023-085915

ISSUE:	
JOB NO.	210975-004
DATE	OCTOBER 2023
PM	RJS
DESIGNED BY	KMS
DRAWN BY	BJS
CHECKED BY	TPA

VALLEY GUTTER DETAILS

CP304
18 OF 66

1 2 3 4 5 6

SAVED: 6/6/2023 11:39:15 AM BY BILL_SEXSON
 PLOTTED: 1/9/2024 4:24:53 PM BY BILL_SEXSON
 U:\WICHITA-CIVIL\2021\210975\01\PEC\DRAWINGS\18-210975-004-CP304-VALLEY GUTTER DETAILS.DWG