

GENERAL NOTES:

- Contractor will be required to provide notice to utility companies a minimum of seventy-two (72) hours prior to any excavation, as follows:
 Kansas One-Call 687-2470
 The Contractor must notify the following in case of an emergency:
 Cox Communications 262-4270
 Kansas Gas Service 1-888-482-4950
 Evergy 383-8650
 Black Hills 1-800-303-0357
 AT&T 268-2245
 City of Wichita Water Dept. 268-4563
 City of Wichita Sewer Maint. 268-4024
 City of Wichita Storm Sewer Maint. 268-4090
 City of Wichita Traffic Maint. 268-4034
 Conoco Phillips Pipeline Co. 1-877-267-2290
 Southern Star Pipeline Co. 529-6600
 Kinder-Morgan Pipeline Co. 1-888-844-5658
 Plant #3 contact (Dave Harper) 303-8778

- Groundwater Elevation has been documented in Geotechnical Exploration Assessment, see GSI Job # 2273047.
- The existing 30" sanitary sewer and MH-0 were modified in 2021. A 12" pipe was installed inside the 30" and the remaining pipe was filled with concrete. The invert in MH-0 was raised to the existing 12" inflow. These as-builts are included with the special provisions.
- The project includes two construction options for the new Wet Well. See project Special Provisions for selection criteria. Contact the City Project Engineer with any questions as stated in the provisions.
 This project includes two options for the construction of the Wet Well. The contractor has the option to submit a bid for either Option 1 and/or Option 2. Option #1 is the construction of two tandem Wet Wells, with Option #2 being a Cast-in-place Wet Well. The city will review the submitted bids for both options and will determine the winning contractor. The winning bid is not exclusively selected based on low bid. Any questions or comments related to the selection process can be submitted to Matthew Schultz P.E. at mschultz@wichita.gov.

- Utility service lines, poles, valve boxes, meters, and etcetera are to be adjusted as necessary by others prior to construction unless the plans specifically call for their adjustment by the Contractor or unless the plans specifically identify a utility to be adjusted by its owner during construction. Existing utilities and their location, as shown on the plans, represent the best information obtainable for design. The Contractor will be required to work around existing utilities within the right-of-way which do not conflict with proposed construction.
- Rubble from the removal of miscellaneous structures and excess excavation which is to be wasted shall be disposed of on sites to be provided by the Contractor. These sites shall be approved by the Engineer as to suitability, appearance and site location. Locations, in the opinion of the Engineer, that will leave an unsightly appearance will not be approved. All disposal sites must be approved by the Kansas Department of Health and Environment. Material either stockpiled or disposed of in a flood plain would require a Kansas State Board of Agriculture permit. Any material dumped in waters of the United States or wetlands is subject to U.S. Corps of Engineers permitting regulations. Any material buried or stockpiled beyond approved construction limits would require additional archaeological investigations unless buried in a previously approved borrow location.

- The contractor shall submit a dewatering plan for the construction of the Wet Well. The dewatering plan shall be approved by City Staff prior to commencement of work.
- The contractor shall include a temporary fence plan and maintain the temporary fence until the new permanent fence is constructed. All temporary fence equal to the height of the existing fence (8'). The Cost of this is subsidiary to Temporary Fencing.
- The contractor shall be responsible for maintaining continuous flow of sewage routing into existing manhole (MH-0). Contractor's proposed method for maintaining sewage flow shall be submitted and approved by the engineer prior to starting and by-passing of sewage flows. Cost of maintaining flow of sewage through construction will not be paid for directly and the cost shall be considered as subsidiary to the other related items of work. Contractor shall not divert any sewage flow through new pipe or manhole until testing has been completed and accepted.

- Trees and shrubs in public right-of-way which are in direct conflict with proposed new construction shall be removed by the Contractor with the Engineer's approval. Trees and shrubs which are not in direct conflict with proposed new construction shall be saved and protected from damage.
- The Contractor shall give all property owners and/or tenants of developed property abutting the construction of this project a minimum of ten (10) days notice prior to start of construction.

BENCHMARKS

BM #1:
Mag Nail at edge of road for North Entrance into WWT Plant #3.
Elev. = 1361.84 NGVD88

BM #2:
RR Spike in East Transmission Power Pole, NE corner of Sewer Treatment Plant #3 Add.
Elev. = 1357.64 NGVD88

BM #3:
RR Spike in East Transmission Power Pole, N. of 37th St. N. SE corner of Sewer Treatment Plant #3 Add.
Elev. = 1360.00 NGVD88

- All existing and proposed erosion control measures including silt fencing, erosion control mat, straw bales, inlet barriers, and const. entrance shall be maintained throughout construction by the contractor and until project is accepted by the City of Wichita. The on-site engineer shall complete weekly reports on the status of erosion control measures. The contractor shall be required to comply with maintenance and/or replacement of erosion control measures as determined by the on-site engineer until project is accepted by City of Wichita. Maintenance and/or replacement of erosion control measures to be paid by L.S. bid item "Maintain Existing BMP's."
- All excess excavation shall remain on-site and shall be stockpiled or spread at a location determined by the Engineer.
- The Contractor shall be responsible for maintaining continuous flow of sewage through construction. Contractor's proposed method for maintaining sewage flow shall be approved by the Engineer. Cost of maintaining flow of sewage through construction will not be paid for directly and this cost shall be considered as subsidiary to the other pay items of work.

- All areas disturbed during construction shall be seeded as follows:
 SEED -- Rye grass (PLS)--5#/1000 Sq. Ft.

All costs associated with seeding including mobilization, preparation of ground, seeding, fertilizing, mulching, etc. shall be included in the L.S. bid item "Seeding".

- Trees and shrubs in the work area which are in direct conflict with proposed new construction shall be removed by the Contractor ONLY with the Developer or Baughman Company approval. Trees and shrubs which are not in direct conflict with proposed new construction shall be saved and protected from damage. If trimming is necessary, a chainsaw shall be used. Breaking limbs with equipment will not be allowed. An on-site pre-construction meeting will occur prior to any construction to discuss tree removal, tree protection, and tree trimming.

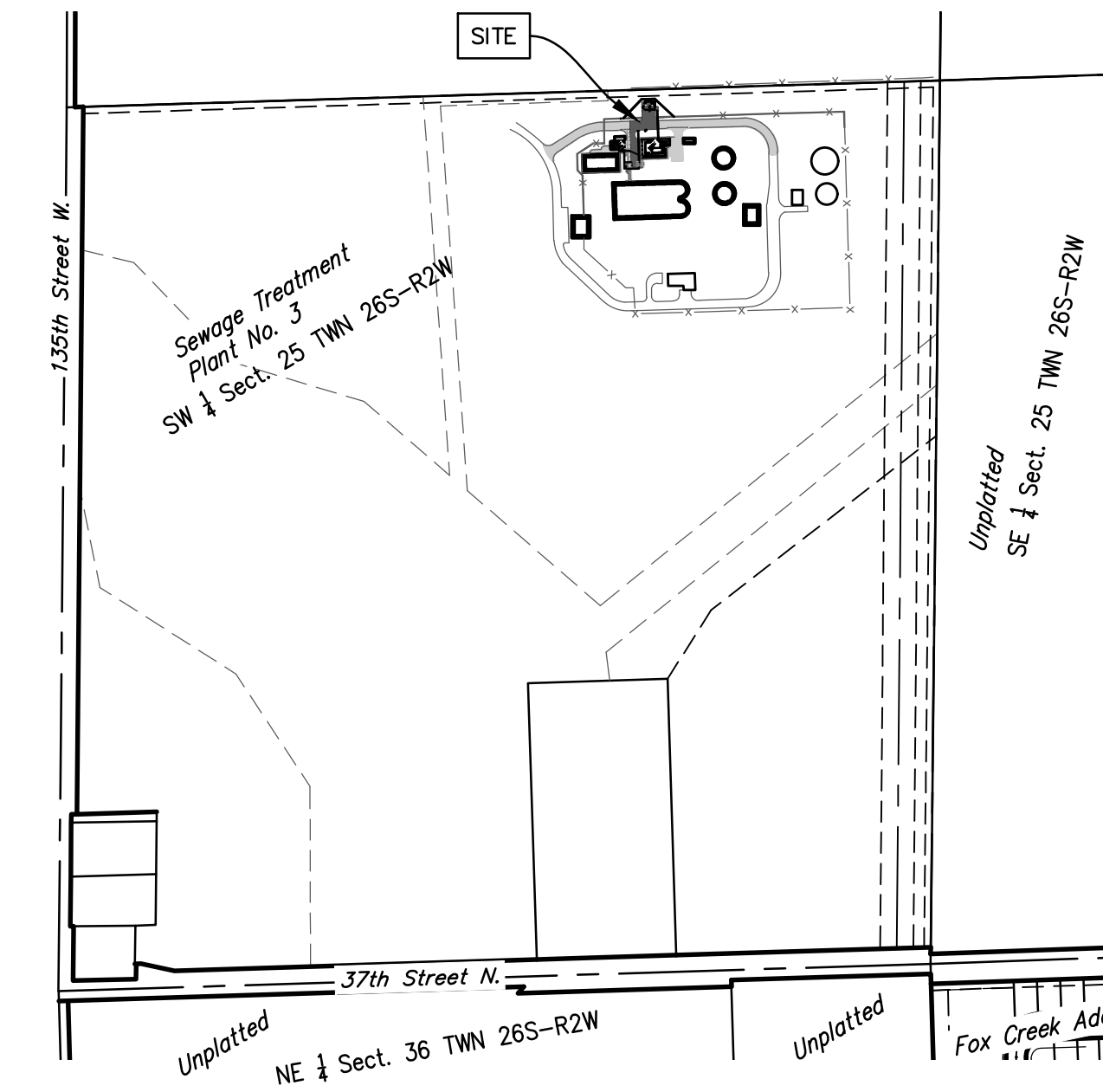
SANITARY SEWER WET WELL IMPROVEMENTS

to serve

Plant 3 with TWO OPTIONS

CITY OF WICHITA, KANSAS

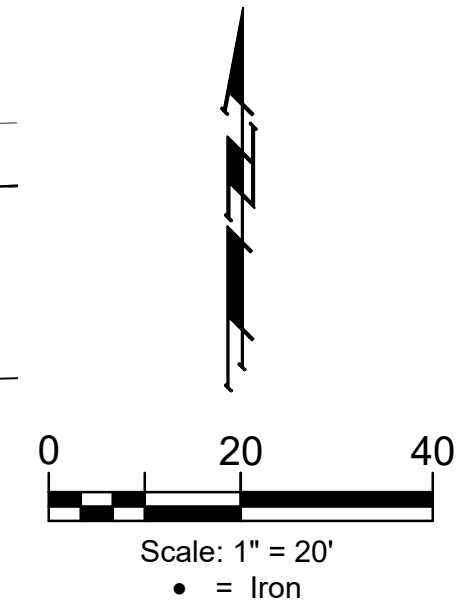
Paul Gunzelman, P.E. Interim City Engineer
 Project Number: 468-2023-005511
 Org Code Number: 53200021
 Munis Number: S1009



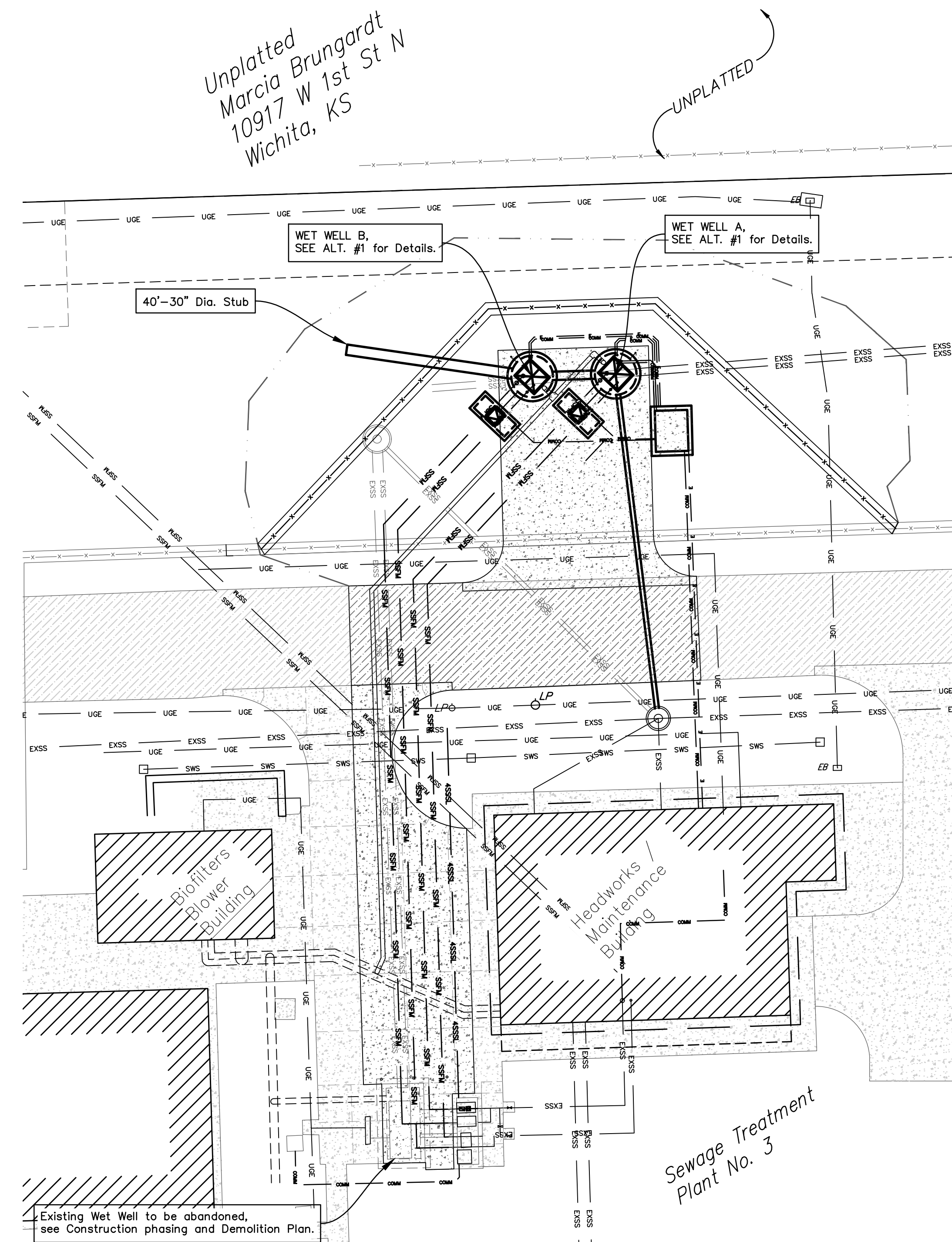
VICINITY MAP

SHEET INDEX

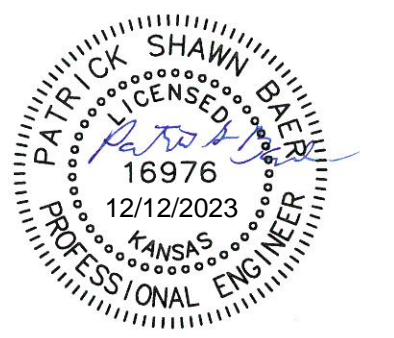
Title Sheet	1
Site Plan and Construction Phase Plan	2
Demolition Plan	3
Site Grading & Erosion Control	4
Headworks Flow Sensor Detail	5
Wet Well Option #1 Overview	6
Well Details	7
Line Plan & Profiles	8-9
Wet Well Option #2 Overview	10
Well Details	11-13
Line Plan & Profiles	14-15
Valve Vault Update	16
Check Valve Vault Details	17
Electrical Plans	18-20
Reference Fence Details (SP2.3)	21
Reference Elec Details (E1.10)	22
Erosion Control BMP Details	23-27
Coordinate Sheet	28
Copy of Plat	29



Wet Well Option #2, not shown, see sheets 10 thru 14 Cast-in-place Wet Well.



Unplatted
 Marcia Brungardt
 10917 W 1st St N
 Wichita, KS



December 8, 2023

BAUGHMAN COMPANY
 315 Ellis St. Wichita, KS 67211 316-262-7271
 BaughmanCo.com

C:\Users\pat.BAUGHMAN\Desktop\Projects copy\30 Inch Gravity Sanitary Sewer Replacement (22-05-E-186)\Engineering\Plant 3 SS Base.dwg